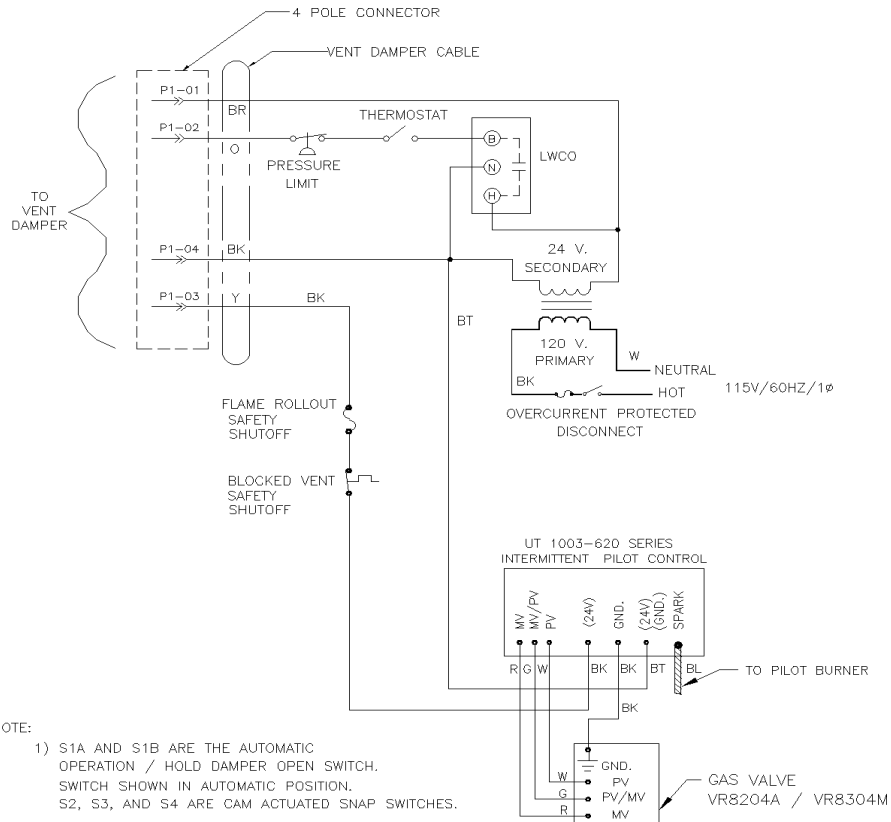
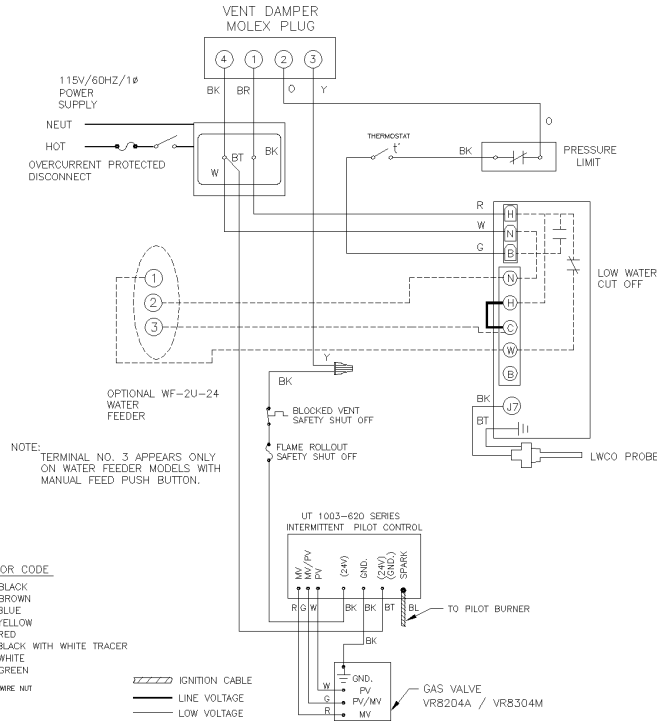


# ADDENDUM TO THE WIRING DIAGRAM FOR GAS-FIRED STEAM BOILERS

## WIRING DIAGRAMS FOR BOILERS WITH PS-802 PROBE TYPE LOW WATER CUT-OFF

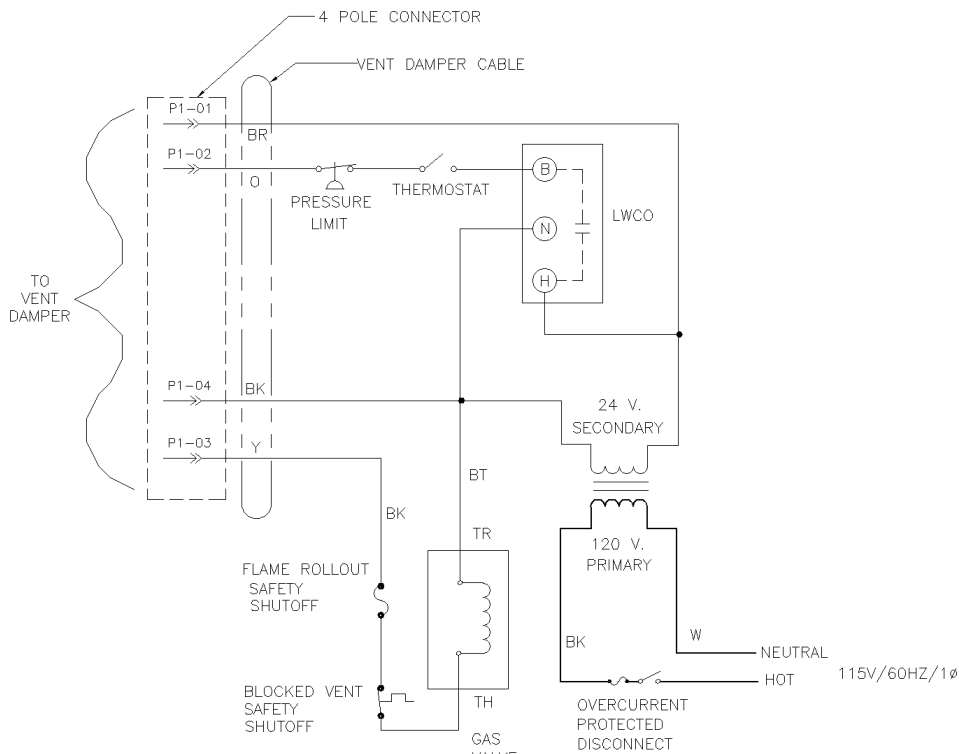
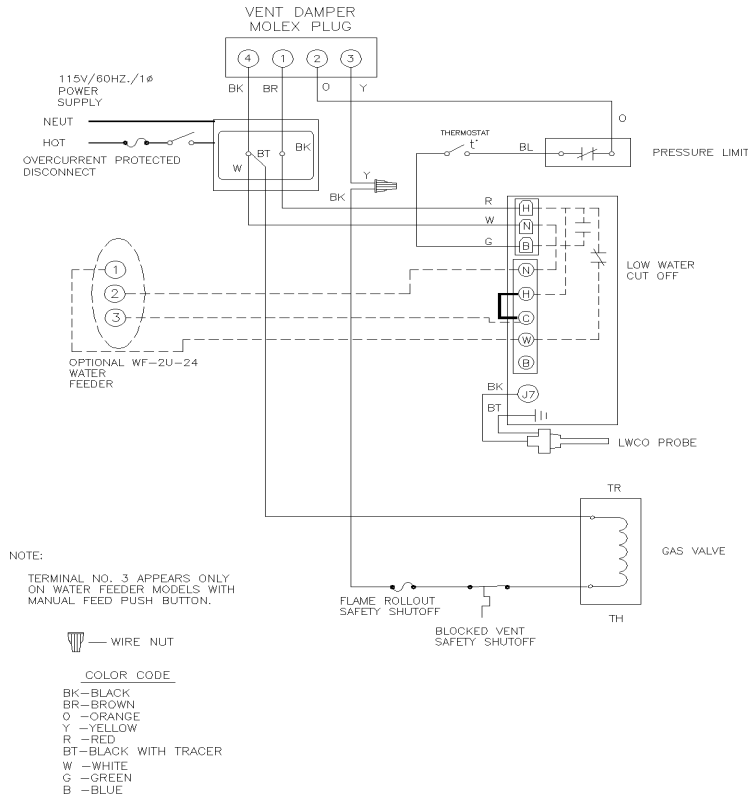
### INTERMITTENT IGNITION



**IF ANY OF THE ORIGINAL WIRE AS SUPPLIED WITH THIS APPLIANCE MUST BE REPLACED, IT MUST BE REPLACED WITH TYPE 105°C THERMOPLASTIC WIRE OR ITS EQUIVALENT.**

# WIRING DIAGRAMS FOR BOILERS WITH PS-802 PROBE TYPE LOW WATER CUT-OFF

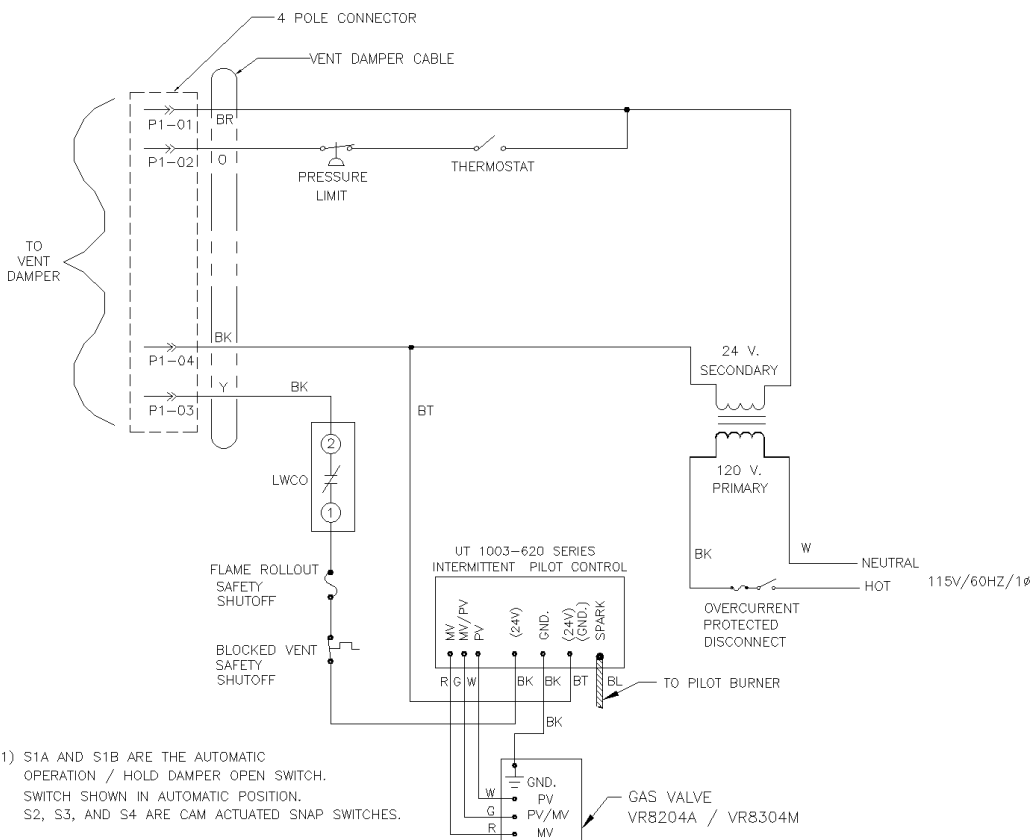
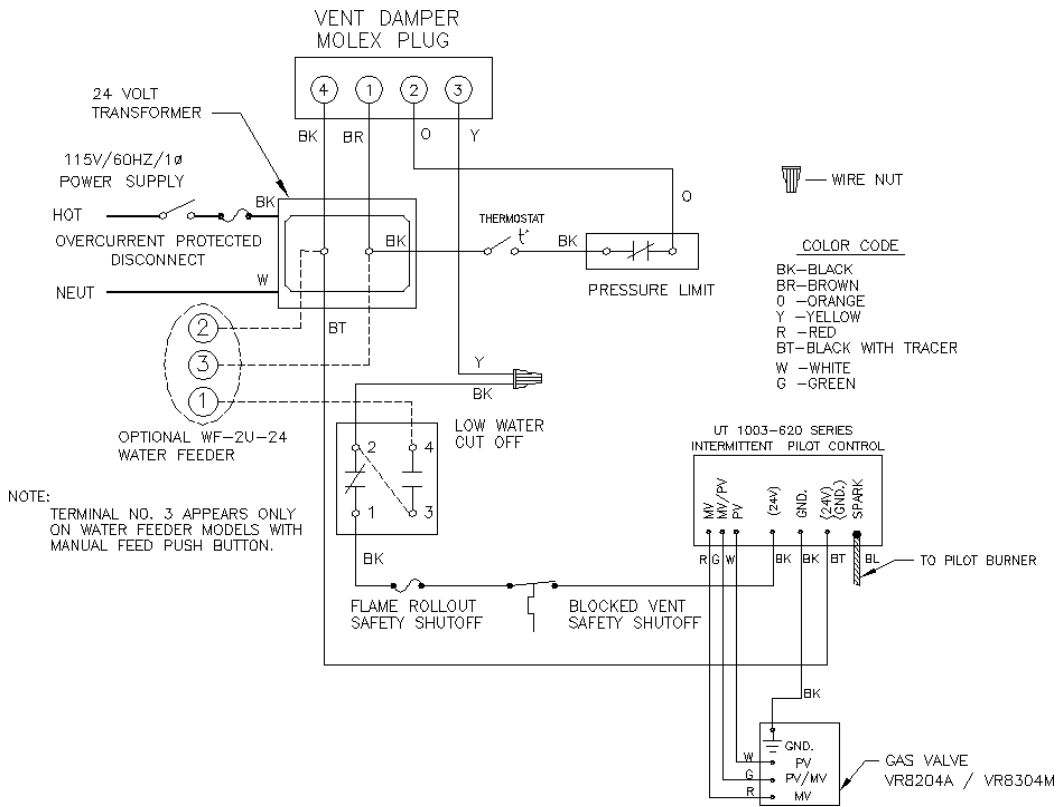
## STANDING PILOT



**IF ANY OF THE ORIGINAL WIRE AS SUPPLIED WITH THIS APPLIANCE MUST BE REPLACED, IT MUST BE REPLACED WITH TYPE 105°C THERMOPLASTIC WIRE OR ITS EQUIVALENT.**

# WIRING DIAGRAMS FOR BOILERS WITH 67D-1FLOAT TYPE LOW WATER CUT-OFF

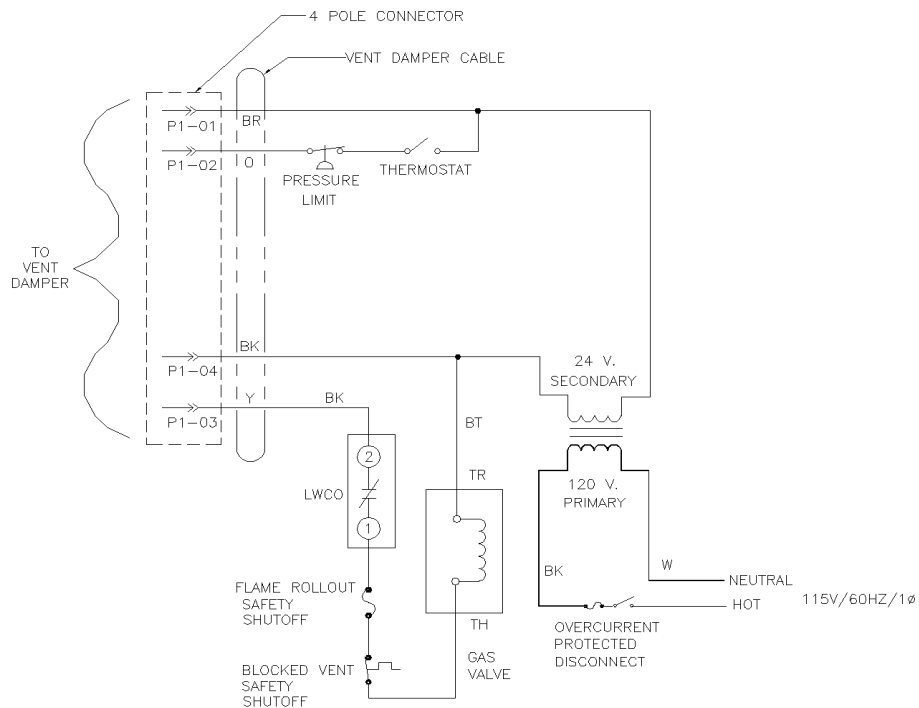
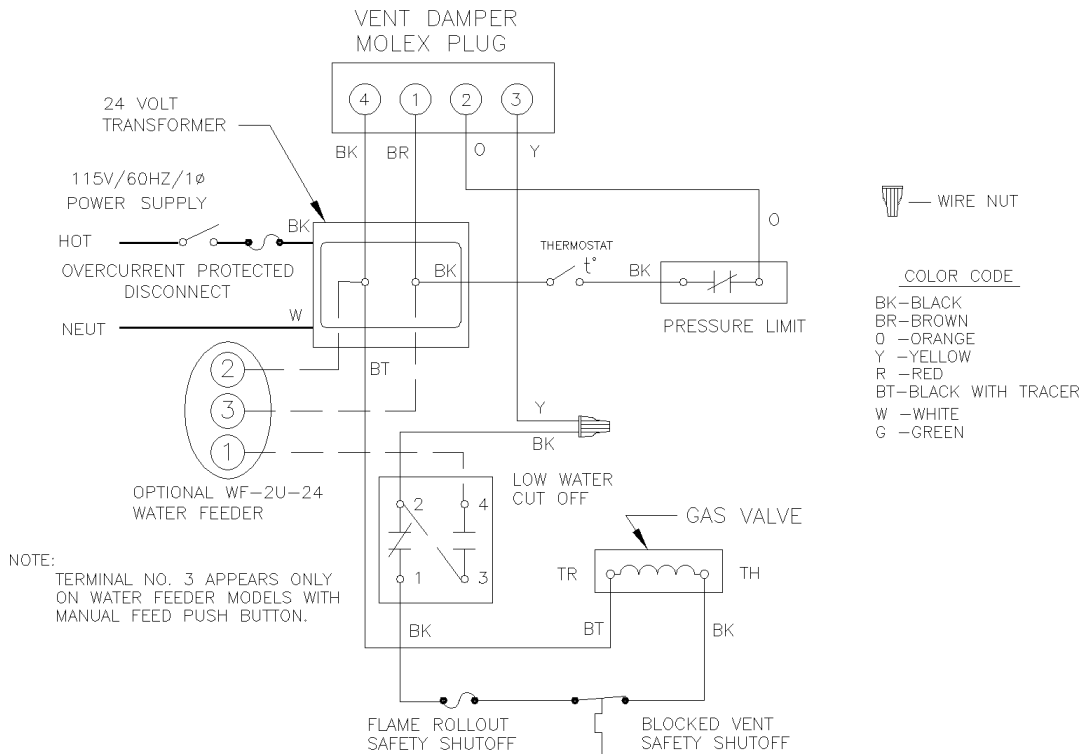
## INTERMITTENT IGNITION



**IF ANY OF THE ORIGINAL WIRE AS SUPPLIED WITH THIS APPLIANCE MUST BE REPLACED, IT MUST BE REPLACED WITH TYPE 105°C THERMOPLASTIC WIRE OR ITS EQUIVALENT.**

# WIRING DIAGRAMS FOR BOILERS WITH 67D-1FLOAT TYPE LOW WATER CUT-OFF

## STANDING PILOT



NOTE:

- 1) S1A AND S1B ARE THE AUTOMATIC OPERATION / HOLD DAMPER OPEN SWITCH. SWITCH SHOWN IN AUTOMATIC POSITION. S2, S3, AND S4 ARE CAM ACTUATED SNAP SWITCHES.

**IF ANY OF THE ORIGINAL WIRE AS SUPPLIED WITH THIS APPLIANCE MUST BE REPLACED, IT MUST BE REPLACED WITH TYPE 105°C THERMOPLASTIC WIRE OR ITS EQUIVALENT.**