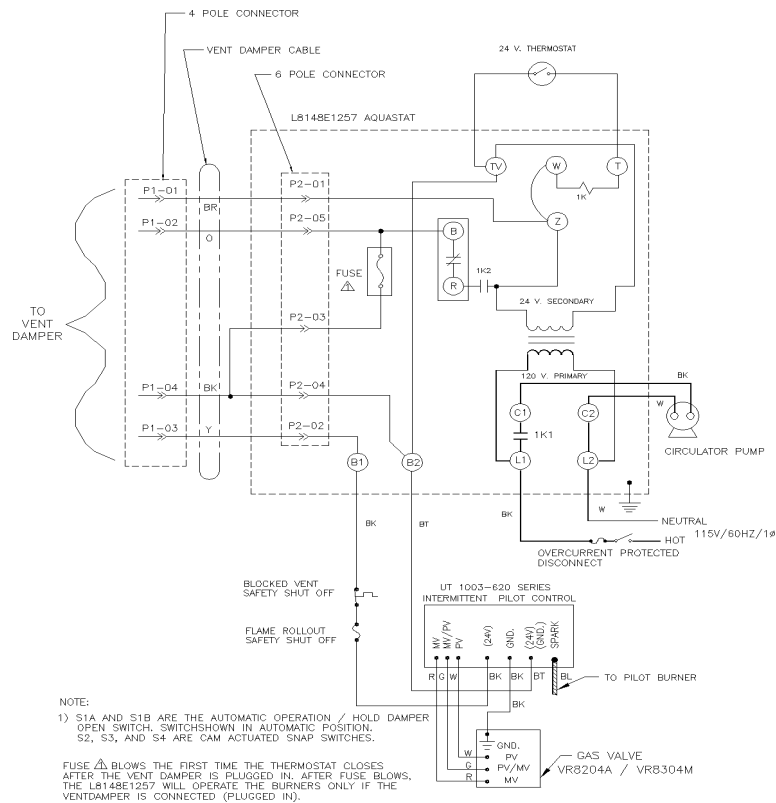
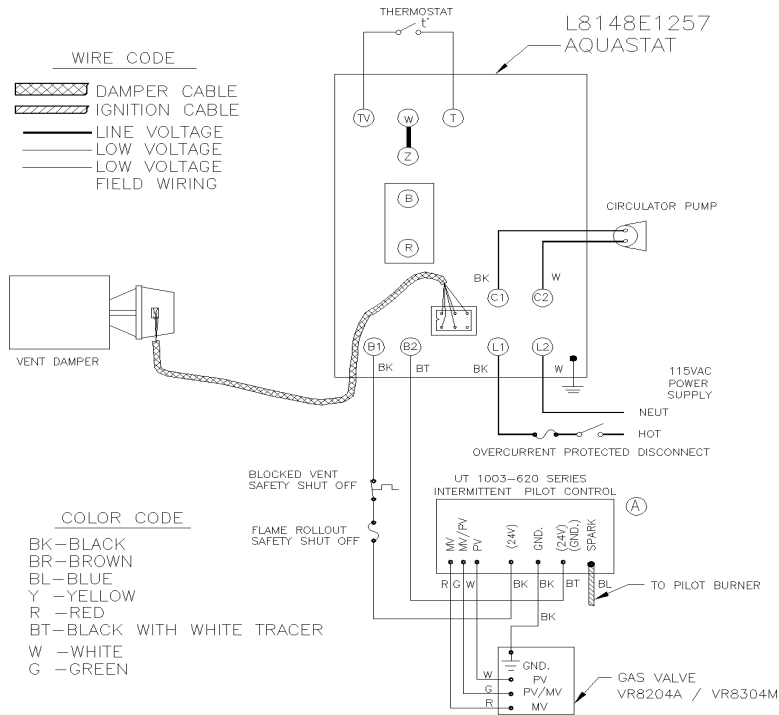


ADDENDUM TO THE WIRING DIAGRAM FOR GAS-FIRED HOT WATER BOILERS

WIRING DIAGRAMS FOR HOT WATER BOILERS

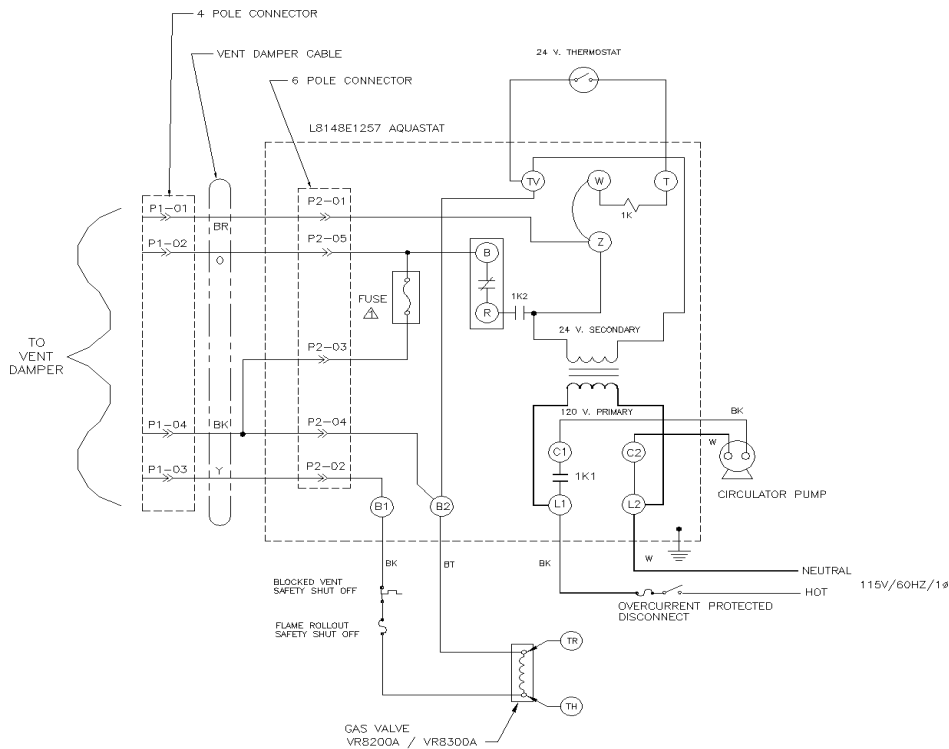
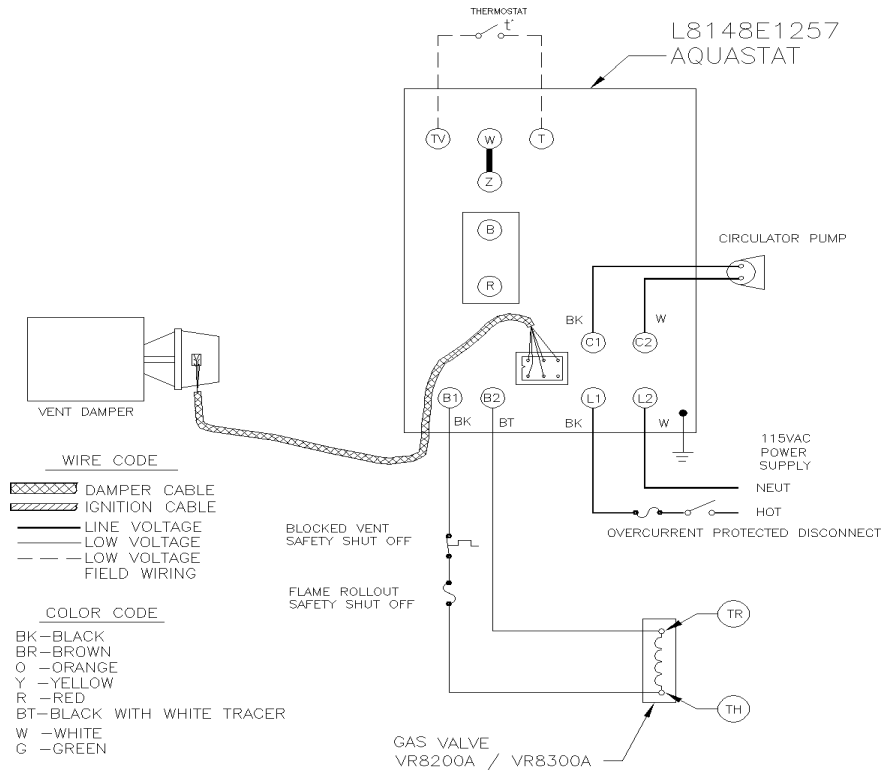
INTERMITTENT IGNITION



IF ANY OF THE ORIGINAL WIRE AS SUPPLIED WITH THIS APPLIANCE MUST BE REPLACED, IT MUST BE REPLACED WITH TYPE 105°C THERMOPLASTIC WIRE OR ITS EQUIVALENT.

WIRING DIAGRAMS FOR HOT WATER BOILERS

STANDING PILOT



NOTE:
 S1A AND S1B ARE THE AUTOMATIC OPERATION / HOLD DAMPER OPEN SWITCH. SWITCH SHOWN IN AUTOMATIC POSITION.
 S2, S3, AND S4 ARE CAM ACTUATED SNAP SWITCHES.

FUSE Δ BLOWS THE FIRST TIME THE THERMOSTAT CLOSES AFTER THE VENT DAMPER IS PLUGGED IN. AFTER FUSE BLOWS, THE L8148E1257 WILL OPERATE THE BURNERS ONLY IF THE VENT DAMPER IS CONNECTED (PLUGGED IN).

IF ANY OF THE ORIGINAL WIRE AS SUPPLIED WITH THIS APPLIANCE MUST BE REPLACED, IT MUST BE REPLACED WITH TYPE 105°C THERMOPLASTIC WIRE OR ITS EQUIVALENT.