

COMMERCIAL RATING PLATE INSTALLATION INSTRUCTIONS

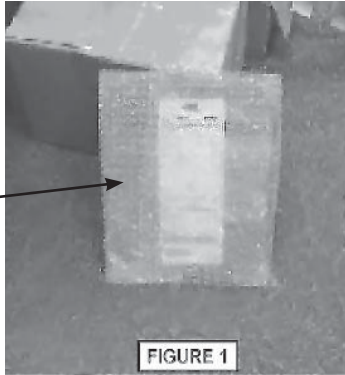
NOTICE

Install rating plate before boiler installation is complete.

INSTALLATION INSTRUCTIONS

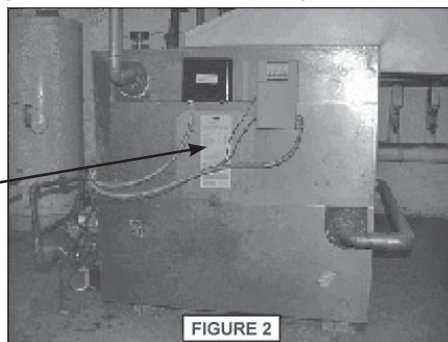
1. Remove rating plate from Rating Plate Kit. See Figure 1.

Rating Plate Kit Package



2. Remove rating plate panel from packaging. Separate bag of screws from rating plate panel.
3. Align four (4) holes in rating plate panel with four (4) holes in center of right jacket panel. Orient text on rating plate to read from top to bottom and left to right.
4. Use #10 x 1/2" screws to fasten rating plate panel to right side of boiler. See Figure 2.

Rating Plate Location
Right side of boiler



NOTICE

Secure rating plate to boiler using 1/4-20 x 1/2" self drilling screws if no pilot holes are present in right jacket panel. See Figure 2 for mounting location.