

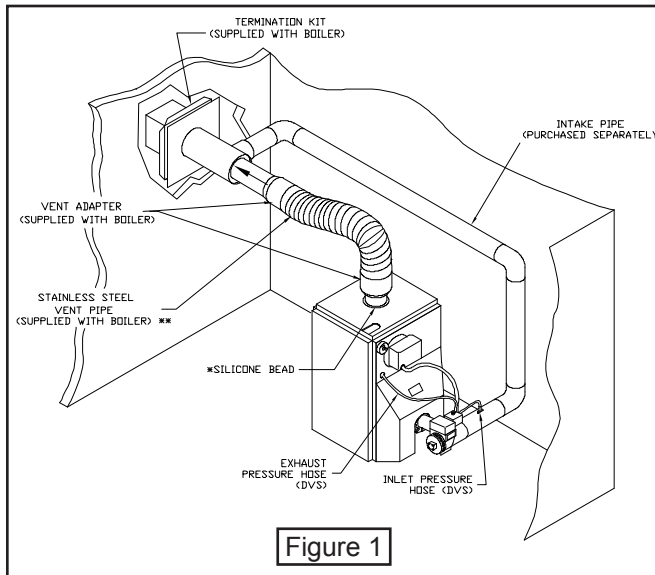
DIRECT VENT SAFETY ADDENDUM FOR SIDEWALL-VENTED OIL BOILERS

The following pages contain changes to both the Installation Manual and Operating Instructions as well as the Venting Addendum included with the boiler. The direct vent safety system was incorporated in compliance with CSA standard B140.03.

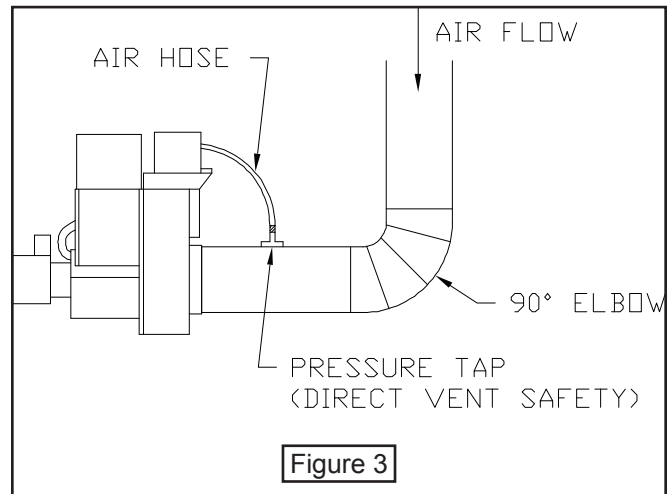
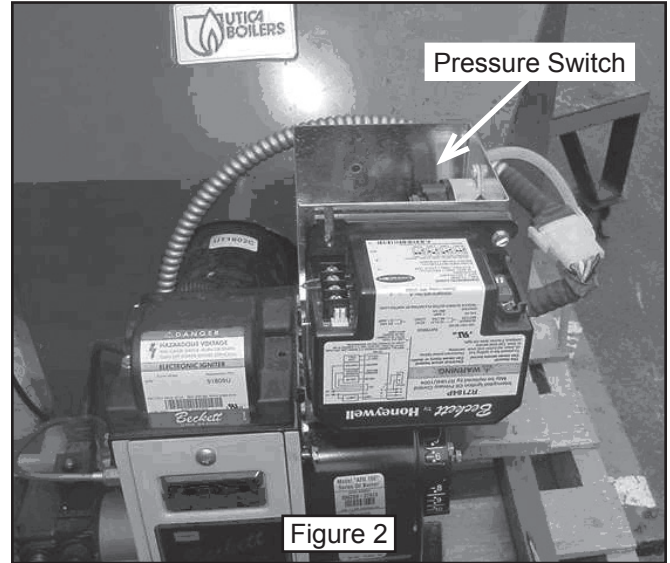
For installation of vent piping, please refer to the Venting Addendum included in the literature package.

Instructions pertaining to the installation of the inlet air piping (Step 9 in the Venting Addendum) has changed to the following:

9. Install the inlet air piping from the termination piece to the burner air inlet using 4", 26 or 30 gauge vent pipe (Do not use plastic or metal flex dryer vent as it may collapse due to the thinness of the wall.) Do not install a vacuum relief valve in the inlet air vent piping. Secure the pipe using sheet metal screws. Install vent pipe with crimps running in the direction of the air flow. (Figure 1)



The direct vent safety system consists of a pressure switch that is mounted in a junction box on top of the oil burner. The pressure switch monitors the differential pressure between the exhaust gases measured at the flue adapter and the inlet air measured at the air inlet of the burner. (Figures 2 & 3)



In the event that the differential pressure drops below .5" w.c., the pressure switch will open and the burner solenoid will lose power and stop the flow of oil to the nozzle assembly. (Figures 4 & 5 on next page.)

The burner motor will continue to run in the post purge mode for approximately 2 minutes before turning off. The burner will attempt to relight three times, if there is not adequate differential pressure at the pressure switch, the burner will go into lock-out mode.

NOTE: If the burner does not light after three failed attempts, please contact a service professional.

**Oil-Fired Boiler
Less Tankless Heater**

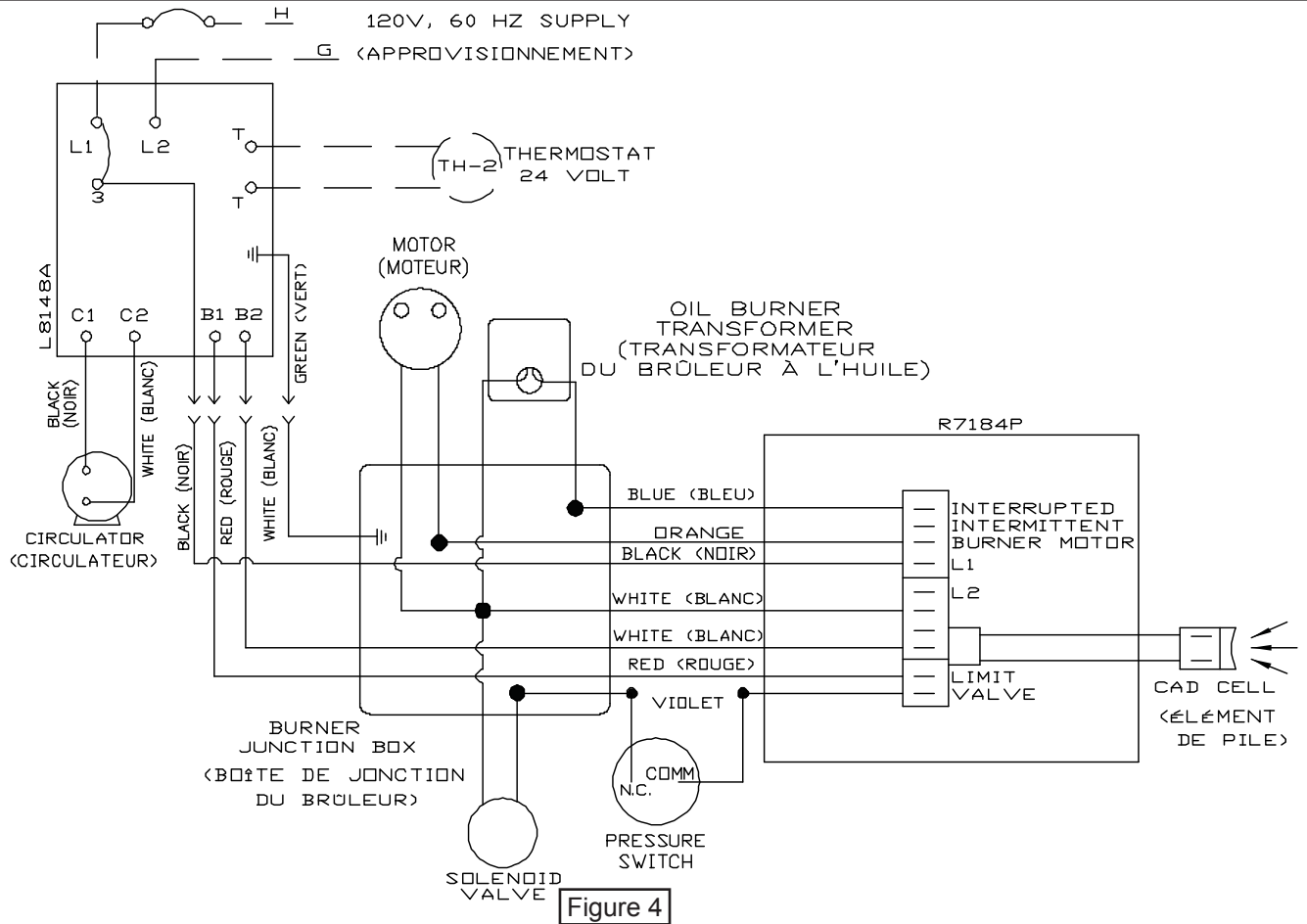


Figure 4

**Oil-Fired Boiler With Circulator Zoned System
and Tankless Heater**

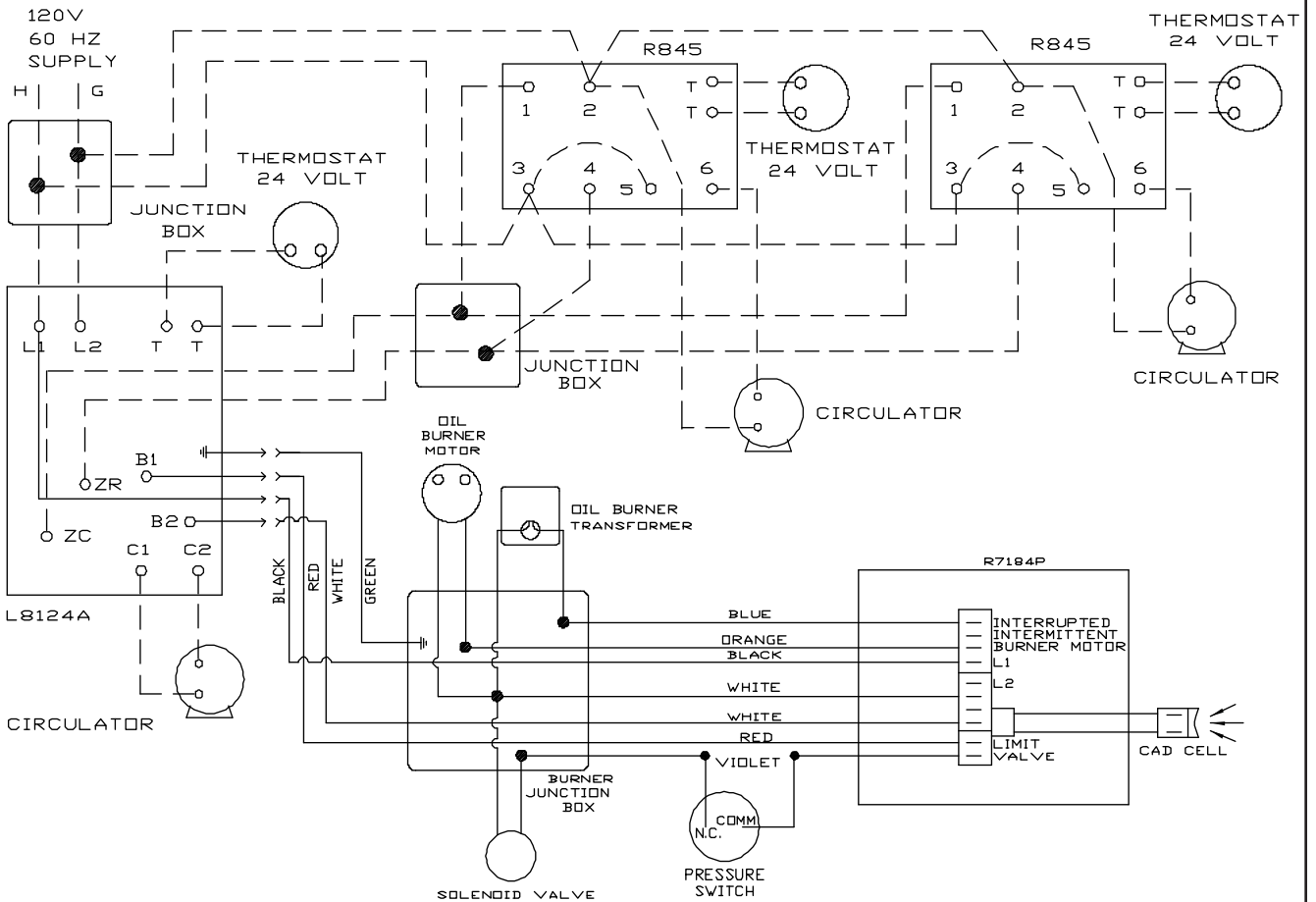


Figure 5