

15B Series with ARGO Z99 Control

Instructions for Field-Installed Electronic Low Water Cut-Off



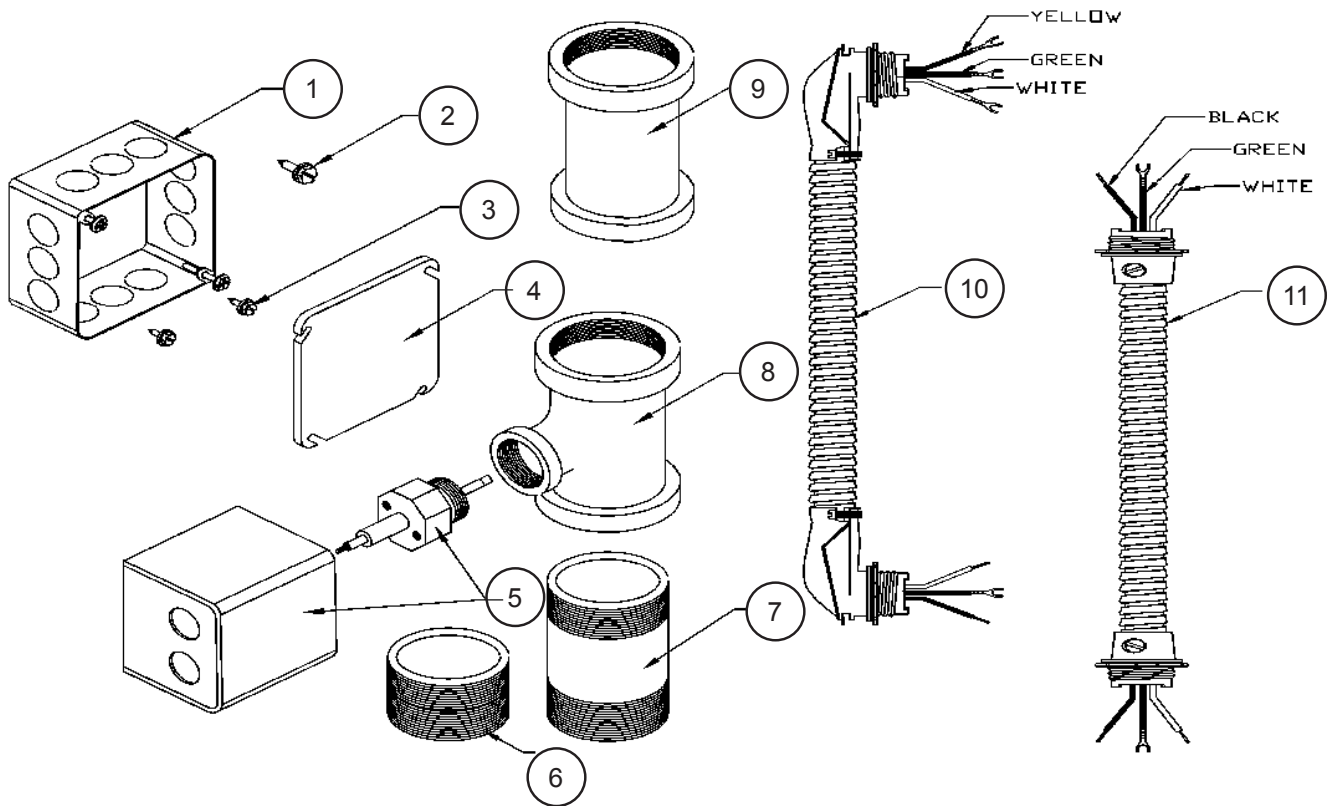
WARNING

P/N# 240007651, Rev. A [09/08]

This symbol indicates an imminently hazardous situation which, if not avoided, may result in death, serious injury or substantial property damage.

READ ALL INSTRUCTIONS BEFORE INSTALLING.

Before starting assembly check to ensure that the contents of the kit are as follows.



ITEM	PART NUMBER	DESCRIPTION	QTY
1	EF-013.01	4X4 Junction Box	1
2	HW09001	#10-32 x 5/16" Ground Screw	1
3	14695074	#8 Sheet metal screw	2
4	30A009701	4x4 Junction Box Cover	1
5	1280011	Low Water Cut-Off with Well	1
6	PF-006.01	Close Nipple	1
7	1310002	1-1/4" x 4-1/2" Nipple	1
8	PF05901	1-1/4" x 1-1/4" x 3/4" Tee	1
9	240007658	1-1/4" Coupling	1
10	2263032	Harness: Aquastat to LWCO	1
11	2263033	Harness: Power	1

Figure 1

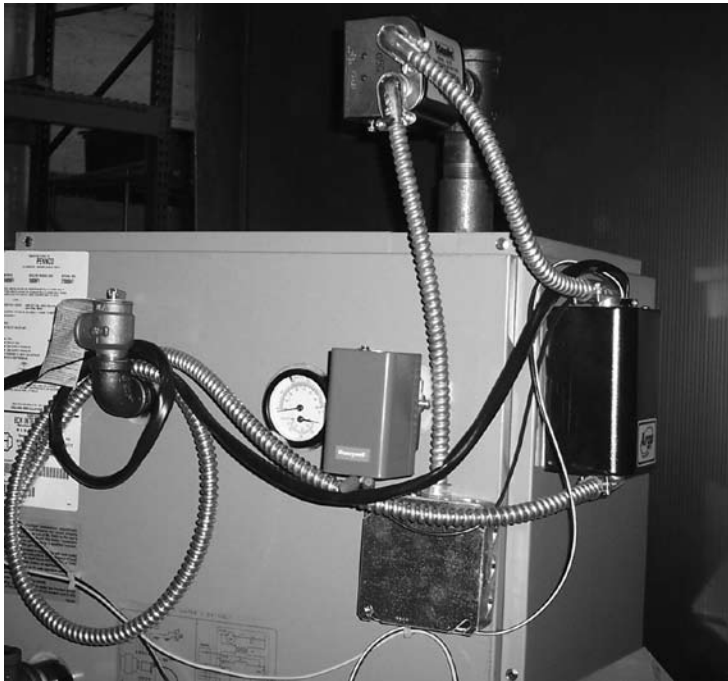


Figure 2



! WARNING

All installations of boilers and venting should be done only by a qualified expert and in accordance with the appropriate carrier manual. Installing or venting a boiler or any other gas appliance with improper methods or materials may result in serious injury or death due to fire or to asphyxiation from poisonous gases such as carbon monoxide which is odorless and invisible.

! WARNING

Keep boiler area clear and free from combustible materials, gasoline and other flammable vapors and liquids. DO NOT obstruct air openings to the boiler room. Modification, substitution or elimination of factory equipped, supplied or specified components may result in property damage, personal injury or the loss of life.

To the owner: Installation and service of this boiler must be performed by a qualified installer.

To the installer: Leave all instructions with the boiler for future reference.

When this product is installed in the Commonwealth of Massachusetts, the installation must be performed by a Licensed Plumber or Licensed Gas Fitter.

Installation of plumbing

1. Apply pipe sealant to the threads of the nipple on the top of the boiler and tighten Coupling onto boiler nipple.(Figure 1)
2. Apply pipe sealant to both ends of the close nipple, start into the Coupling on top of the boiler. Tighten the 1-1/4" x 1-1/4" x 3/4" tee onto the Close Nipple. (make sure the tee is facing in the correct direction according to Figure 1)
3. Apply pipe sealent to LWCO probe and installin to tee and tighten. (see Figure 1)

Installation of wiring

1. Mount the 4" x 4" J-box to boiler as shown in Figure 4 using the 2 sheet metal screws provided. This is where main power will be tied into the unit.
2. Install the LWCO on to the probe and tighten the two 1/4" screws to fasten the cut-off to the probe, also install the Blue wire to the Probe and fasten with wing nut provided. (Figure 5).
3. Install the wire harness #1 with the yellow wire into the upper left hole in the Argo Z99 Control.
4. Install the yellow wire to terminal L1, and the white wire to terminal L2. Green wire to green ground screw.

Procedure for Testing the LWCO

1. Turn on power to the boiler the green light will illuminate.
2. Fill boiler with water past the probe until LWCO resets. (The red light will go out.)
3. Drain the boiler past the probe and the Red light on the LWCO will light indicating the cut-off is in the low water mode. Power to the Aquastat is interrupted and the boiler shuts off. (Power in the cut off is still live.)
4. Fill boiler with water and put into operation.

Figure 3



Figure 4

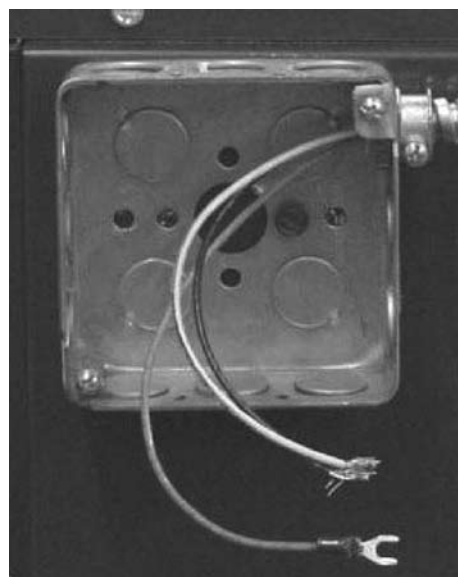


Figure 5

