

ECR97 CONVERSION KIT INSTRUCTIONS

NATURAL GAS TO LP & LP TO NATURAL GAS

ECR97 - 075 Kit #550002171

ECR97 - 100 Kit #550002172

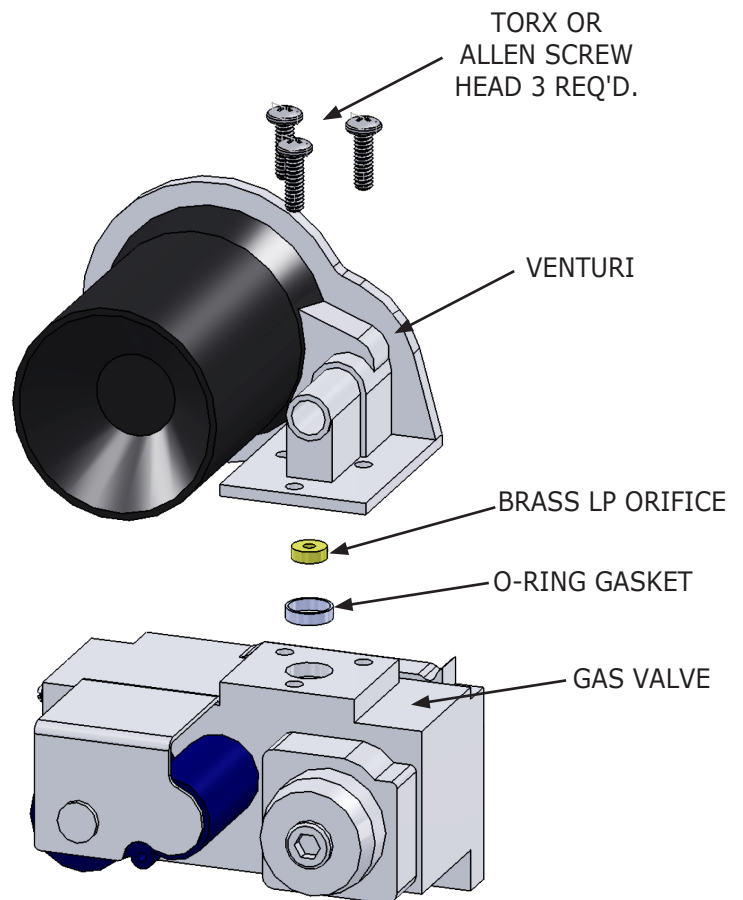
⚠ WARNING

Conversion kit shall be installed by qualified service agency in accordance with manufacturer's instructions and all applicable codes and requirements of authority having jurisdiction. If information in these instructions is not followed exactly, a fire, explosion or production of carbon monoxide may result causing property damage, personal injury or loss of life. Qualified service agency is responsible for proper installation of this kit. Installation is not proper and complete until operation of converted appliance is checked as specified in manufacturer's instructions supplied with the kit.

⚠ CAUTION

Shut "OFF" gas supply prior to disconnecting electrical power, before proceeding with conversion.

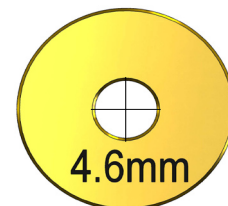
Figure - 1 Disconnect Venturi Body from Gas Valve



Converting Boiler From Natural Gas To LP:

1. Remove jacket from boiler.
2. Follow instruction TO TURN OFF GAS TO APPLIANCE.
3. Carefully separate venturi body from gas valve by removing 3 x T-20 screws.
4. Insert LP orifice into o-ring gasket as shown in Figure 1. See Table 1 for orifice size.
5. Connect Venturi body to gas valve using 3 x T-20 screws.
6. Replace jacket.
7. Place labels onto boiler as shown in Figure 2.
8. Follow instructions in "Start-up Procedure" section of boiler's Installation Operation Maintenance manual for proper startup and verification procedures.

Typical Brass LP Orifice



ISO 9001-2008 Certified Company
ECR International, Inc.
2201 Dwyer Ave.
Utica, NY 13501



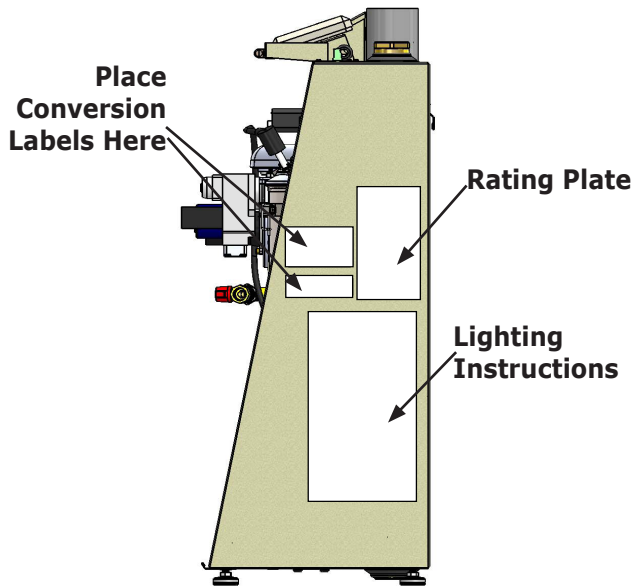
Converting Boiler From LP To Natural Gas:

1. Remove jacket from boiler.
2. Carefully separate venturi body from gas valve by removing 3 x T-20 screws.
3. Remove orifice as shown in Figure 1, leaving O-ring gasket in place.
4. Connect Venturi body to gas valve using 3 x T-20 screws.
5. Replace jacket.
6. Place labels onto boiler as shown in Figure 2.
7. Follow instructions in "Start-up Procedure" section of boiler's Installation Operation Maintenance manual for proper startup and verification procedures.

Table 2 - Parts Lists

ECR97 - 075 Gas Conversion Kit #550002171		
Description	Part No.	Qty
Orifice,LP,ECR97 - 075	1350018	1
Label,"Converted By"	240008688	2
Label, "NAT to LP" Conversion Plate	240008686	1
Label, "LP to NAT" Conversion Plate	240008687	1
Instructions	240008527	1

Figure - 2 Conversion Label Placement



ECR97 - 100 Gas Conversion Kit #550002172		
Description	Part No.	Qty
Orifice,LP,ECR97 - 100	240008263	1
Label,"Converted By"	240008688	2
Label, "NAT to LP" Conversion Plate	240008686	1
Label, "LP to NAT" Conversion Plate	240008687	1
Instructions	240008527	1

Table 1 -Typical LP Orifice

ECR97 - Propane Orifice Chart		
Model	Part No.	Size
ECR97 - 075	1350018	3.9mm
ECR97 - 100	240008263	4.6mm