

IGNITER REPLACEMENT KIT INSTRUCTIONS

050, 075, 100, Kit #550002190

150, 200, 299 Kit #550002282

Kit installation shall be completed by qualified agency.

⚠ WARNING

Fire, explosion, asphyxiation and electrical shock hazard. Improper installation could result in death or serious injury. Read this instruction and understand all requirements, including requirements of authority having jurisdiction, before beginning installation. Installation not complete until appliance operation is verified per Installation, Operation & Maintenance Manual provided with boiler.

Igniter Removal

1. Tools required:
 - 11/32" nut driver, wrench or socket
 - Gasket scraper
2. Follow instructions to TURN OFF GAS TO APPLIANCE found on Operating Instructions label on boiler or in Installation, Operation & Maintenance Manual. Verify all electrical power to boiler is turned off.

⚠ WARNING

Electrical shock hazard. Turn OFF electrical power supply at service panel.

3. Remove front jacket panel(s).

⚠ WARNING

Burn hazard. Verify heat exchanger and igniter have cooled or use appropriate personal protection equipment before removing igniter.

4. Inspect combustion chamber through sight glass. Verify flame is not present. See figures 1 and 2.
5. Disconnect igniter cable from igniter.
6. Remove two (2) 8-32 hex nuts using 11/32" nut driver, wrench or socket. See figure 2 and 3.
7. Pull igniter up and out of heat exchanger.
8. Remove old igniter gasket. Clean heat exchanger surface as needed.

Figure 1 - Sight Glass

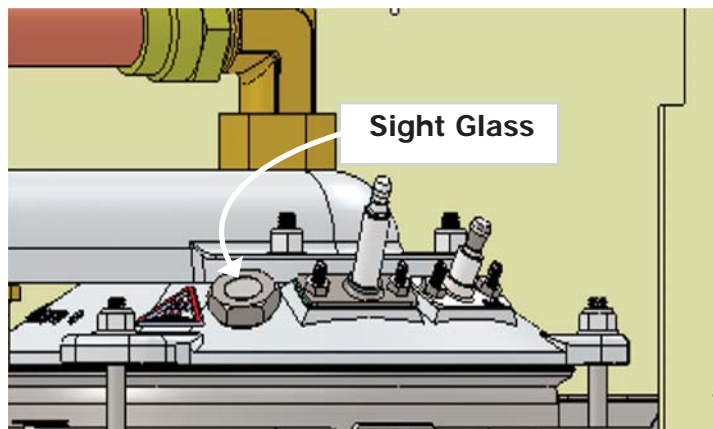
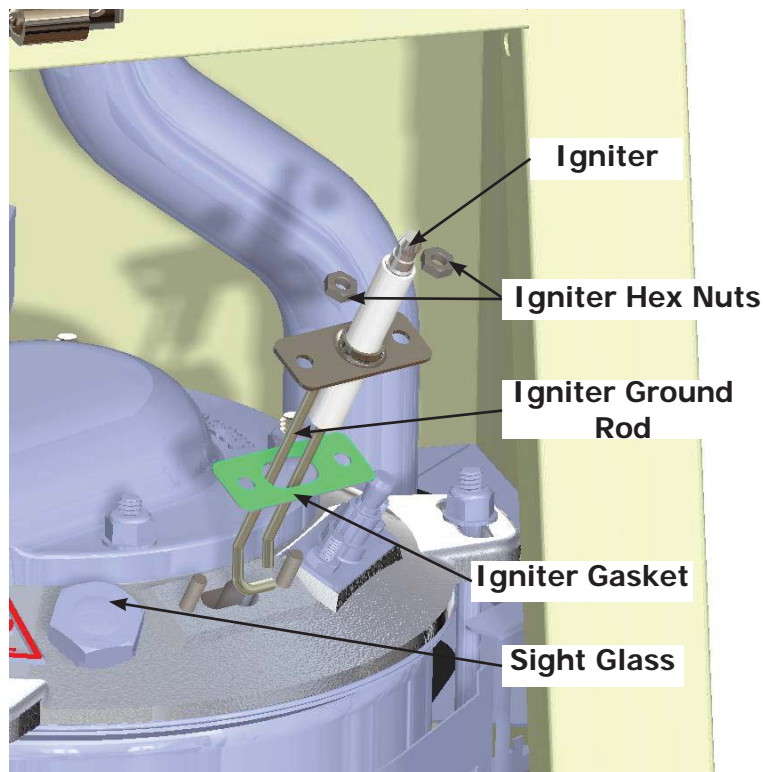


Figure 2 - Igniter, Gasket and Hex Nuts - 050-200MBH

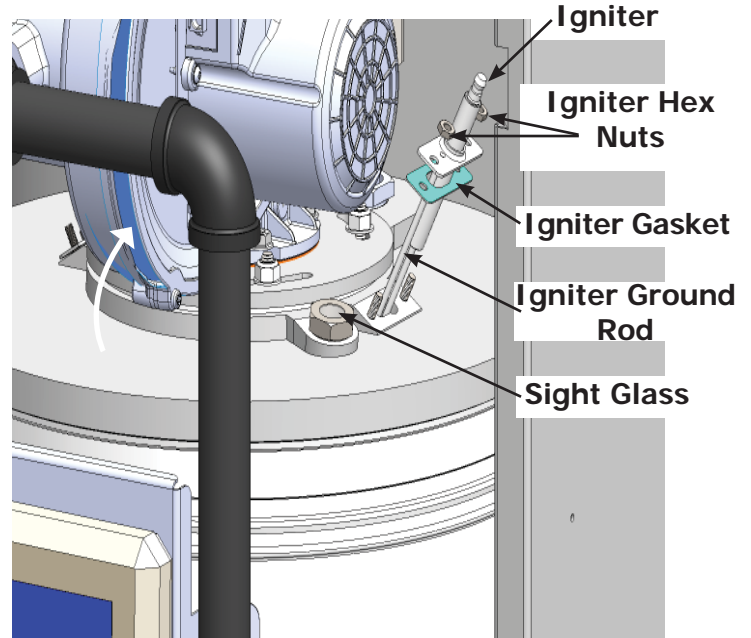


IGNITER REPLACEMENT KIT INSTRUCTIONS

Igniter Install

1. Position igniter gasket over igniter.
2. Orient igniter with ground rod to left side. See figure 2 and 3.
3. Insert igniter into heat exchanger. Secure with two (2) 8-32 hex nuts. Do not over tighten (maximum 5 lb-ft).
4. Attach igniter cable to igniter.
5. Resume operation using OPERATING INSTRUCTION found on Operating Instructions label on boiler or in Installation, Operation & Maintenance Manual.
6. Verify proper operation by following START UP PROCEDURE in Installation, Operation & Maintenance Manual.
7. Install front jacket panel(s).

Figure 3 - Igniter, Gasket and Hex Nuts - 299 MBH



PARTS LIST

| 050,075,100 Igniter Kit #550002190 | | |
|---|-----------|-----|
| DESCRIPTION | PART # | QTY |
| 8-32 Hex Nut | - | 2 |
| Igniter 050, 075, 100 | - | 1 |
| Igniter Gasket | - | 1 |
| Instructions | 240008592 | 1 |

| 150, 200, 299 Igniter Kit #550002282 | | |
|---|-----------|-----|
| DESCRIPTION | PART # | QTY |
| 8-32 Hex Nut | - | 2 |
| Igniter 150, 200 | - | 1 |
| Igniter Gasket | - | 1 |
| Instructions | 240008592 | 1 |

Check our website frequently for updates: www.ecrinternational.com