

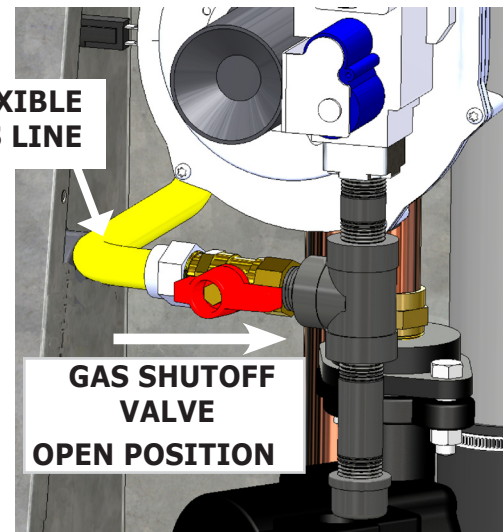
# ECR97 CONDENSATE TRAP KIT INSTRUCTIONS

## ECR97 - 075/100 Kit #550002195

**Figure 1 - Gas Shutoff Valve**

**⚠ WARNING**

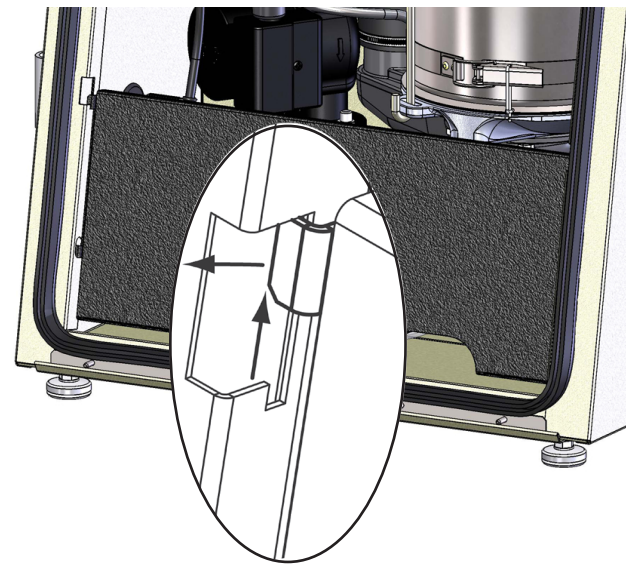
Kit shall be installed by qualified service agency in accordance with manufacturer's instructions and all applicable codes and requirements of authority having jurisdiction. If information in these instructions is not followed exactly, a fire, explosion or production of carbon monoxide may result causing property damage, personal injury or loss of life. Qualified service agency is responsible for proper installation of this kit. Installation is not proper and complete until operation of appliance is checked as specified in manufacturer's instructions supplied with the kit.



### Condensate Trap kit:

1. Tools required:
  - Spring hose clamp pliers
2. Follow instructions To Turn Off Gas to Appliance found on Operating Instructions label inside jacket or in Installation, Operation & Maintenance Manual.
3. Remove jacket from boiler. Grasp front cover at lip behind plastic smoke-colored control cover. Pull forward to release snap action latches. Lift jacket up and off bottom jacket rest.
4. Visually inspect through sight glass verify no flame is present.
5. Lift control panel up slightly to clear top tab from notch in jacket then fold control panel down. See Figures 2 and 3.
6. Remove collet clips from condensate trap. See Figure 4.
  - If replacing trap only go to step 10.
7. Disconnect nipple at drain end of condensate trap. See Figure 4.
8. Pull nipple back through grommet in cabinet sidewall. See Figure 4.
  - Tip: Nipple is threaded into barb elbow. If nipple is cemented to drain line, un-thread barb of nipple leaving nipple in place. Disconnect condensate hose from fitting using hose clamp pliers if unable to disconnect manually.
9. Install barb elbow and/or nipple using Teflon tape on threaded fitting.
10. Attach Condensate Trap to Condensate Collector. Secure with collet clip.

**Figure 2 - Internal Access Panel Closed with Latch**



ISO 9001-2008 Certified Company

ECR International, Inc.

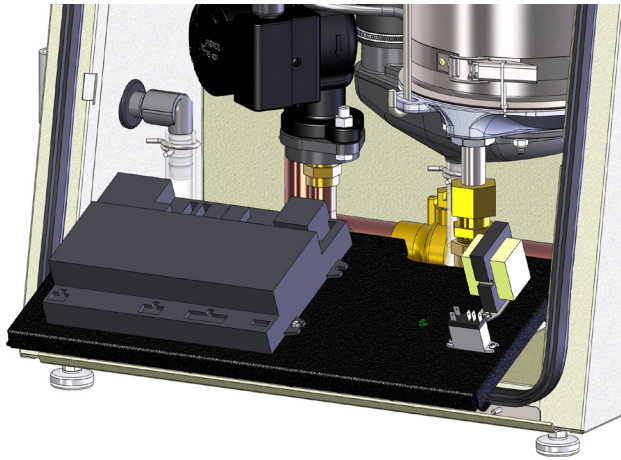
2201 Dwyer Ave.

Utica, NY 13501



11. Fill Condensate trap with about 1 cup (250ml). Attach condensate trap to barbed elbow. Secure with collet clip.
12. Swing control panel back into position. See Figure 2.
13. Follow start-up instructions in Installation, Operation and Maintenance manual to restore and verify operation.
14. Reattach jacket.

**Figure 3 - Internal Access Panel Open**



**PARTS LIST**

<b>ECR97 075/100 CONDENSATE TRAP KIT #550002195</b>		
<b>DESCRIPTION</b>	<b>PART #</b>	<b>QTY</b>
Collet Clip. 1-1/8"	240008406	2
Condensate Trap	240008264	1
90° Barbed Elbow	-	1
Nipple	-	1
Instructions	240008597	1

**NOTICE**

**IMPORTANT:** Condensate trap must be manually filled with water at initial start up.

**Figure 4 - Condensate Drain Assembly**

