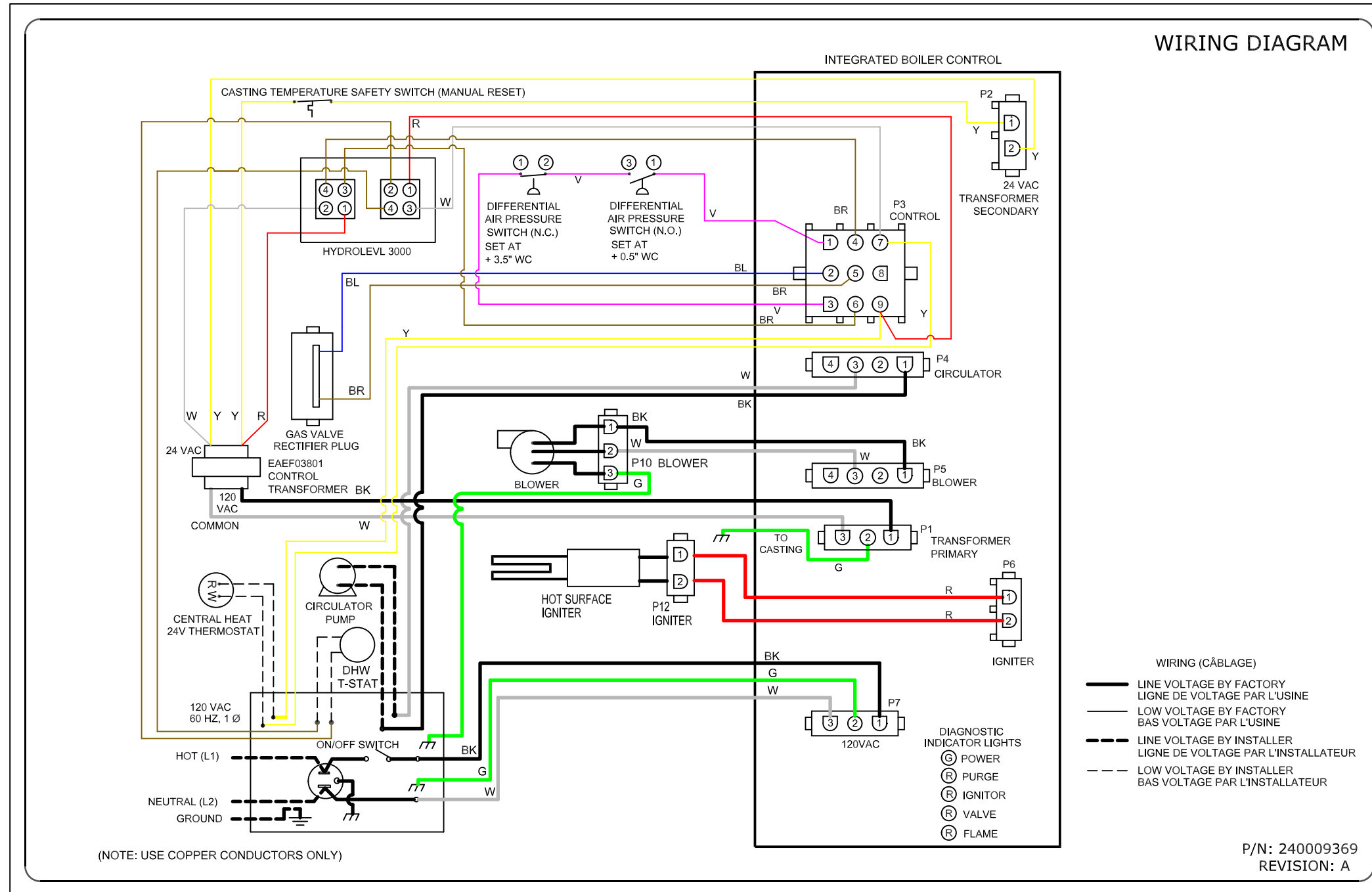


REVISIONS			
REV.	DATE	CR/CN	DESCRIPTION
A	2/25/12	120016	RELEASE TO PRODUCTION.



LEFT OF DOCUMENT

RIGHT OF DOCUMENT

(NOTE: USE COPPER CONDUCTORS ONLY)

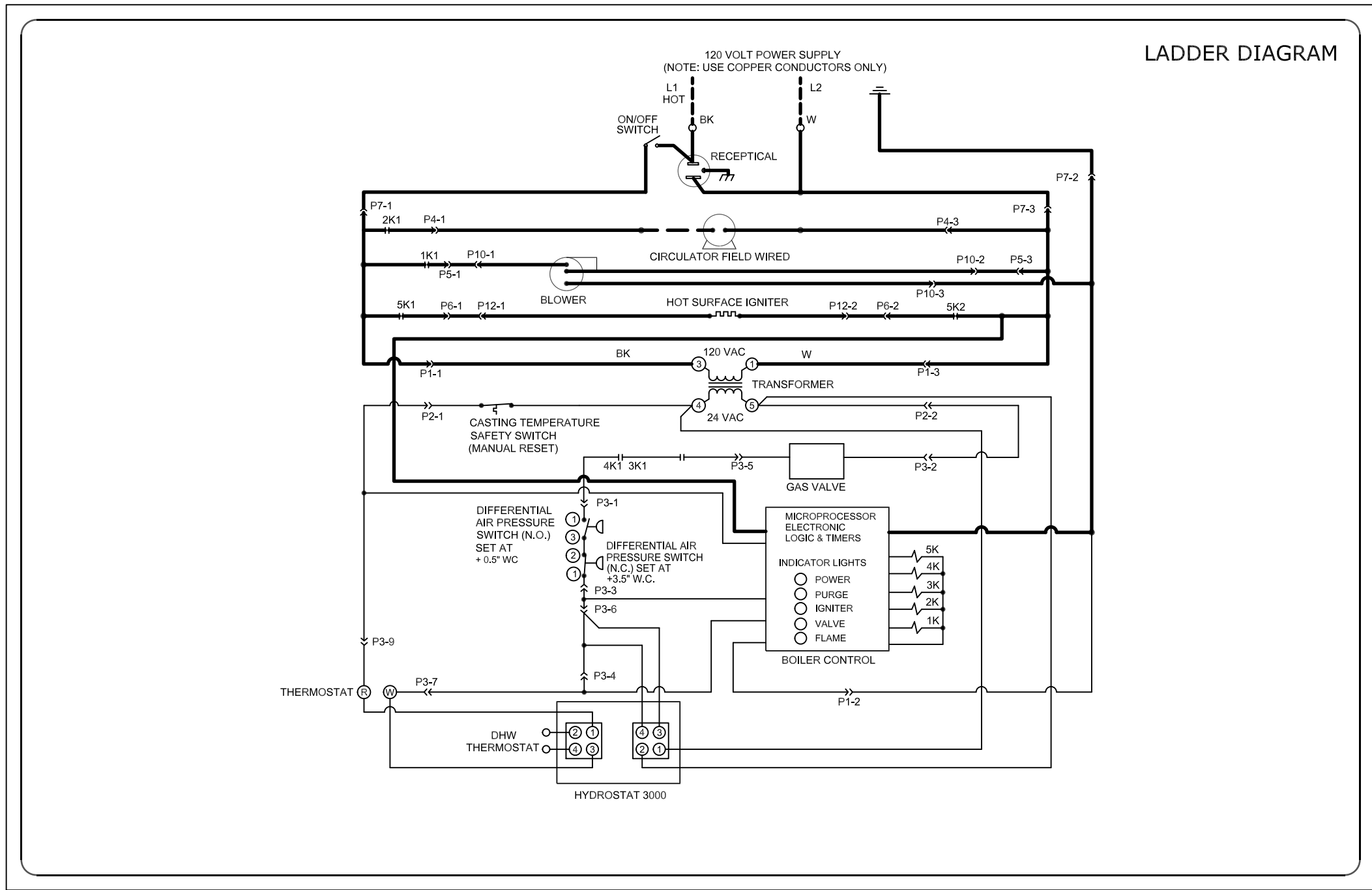
BOTTOM OF WIRE
DIAGRAM SHEET

NOTES:

1. MATERIAL: NECUSSA 4 MIL THERMANENT DIGITAL POLY OR EQUIVALENT.
2. DIMENSIONS OF WIRING DIAGRAM ARE 17.00" x 11.00".
3. PAPER COLOR TO BE WHITE.
4. DIAGRAM TO BE 1 SHEET, FRONT AND BACK.
SHEET 1 OF 2 SHOWS FRONT OF WIRING DIAGRAM.
SHEET 2 OF 2 SHOWS BACK OF WIRING DIAGRAM.

THIS DOCUMENT AND ITS CONTENTS CONSTITUTE PROPRIETARY TRADE SECRETS OF ECR INTERNATIONAL, INC. AND MAY NOT BE REPRODUCED, DISTRIBUTED OR USED IN ANY MANNER WITHOUT THE EXPRESS WRITTEN CONSENT OF AN AUTHORIZED REPRESENTATIVE OF ECR INTERNATIONAL, INC.

TITLE		Innovative Living™	
LABEL WIRING DIAGRAM Q90-200		2201 Dwyer Ave. Utica, N.Y. 13504 e-mail: www.ecrinternational.com	
Phone: (315) 797-1310 Fax: (315) 797-5372		SCALE	DATE
REFERENCE ASME Y14.5M-1994 FOR GEOMETRIC DIMENSIONING. ALL DIMENSIONS IN INCHES. DRAWING NOT TO BE SCALED. NON-BASIC DIMENSIONAL AND ANGULAR TOLERANCES UNLESS OTHERWISE NOTED: DECIMALS: XX - ±0.1 XXX - ±0.05 FRACTIONAL: ±1/32 ANGULAR: MACHINED - ±1° ANGULAR: FORMED - ±2°		1:1	05/20/03
DRAWN BY	CHKD	APPD	
JAM	FS	MP	
SEE NOTE NO. 1		SHEET	
SIZE B		1 of 1	
DWG NO. 240009369		REV	A




LEFT OF DOCUMENT

RIGHT OF DOCUMENT

BOTTOM OF WIRE DIAGRAM SHEET

THIS DOCUMENT AND ITS CONTENTS CONSTITUTE PROPRIETARY TRADE SECRETS OF ECR INTERNATIONAL, INC. AND MAY NOT BE REPRODUCED, DISTRIBUTED OR USED IN ANY MANNER WITHOUT THE EXPRESS WRITTEN CONSENT OF AN AUTHORIZED REPRESENTATIVE OF ECR INTERNATIONAL, INC.

TITLE		 Innovative Living™	
LABEL WIRING DIAGRAM Q90-200		2201 Deyer Ave. Phone: (315) 797-1310 Utica, N.Y. 13504 Fax: (315) 797-5372 e-mail: www.ecrinternational.com	
SCALE	1:1	DATE	05/20/03
DRAWN BY	JAM	CHKD	FS
MAT'L	SEE NOTE NO. 1	APP'D	MP
SIZE	B	DWG NO.	240009369
		SHEET	2 of 2
		REV	A