

299 BLOWER REPLACEMENT KIT INSTRUCTIONS

Kit #550002812

Kit installation shall be completed by qualified agency.

⚠ WARNING

Fire, explosion, asphyxiation and electrical shock hazard. Improper installation could result in death or serious injury. Read this instruction and understand all requirements, including requirements of authority having jurisdiction, before beginning installation. Installation not complete until appliance operation verified per Installation, Operation & Maintenance Manual provided with boiler.

Tools Required:

- 2 Crescent Wrenches
- Slotted Screwdriver
- Phillips Screwdriver

1. Follow instructions TO TURN OFF GAS TO APPLIANCE found on Operating Instructions label on boiler or in Installation, Operation & Maintenance Manual. Verify all electrical power to boiler is turned off.

⚠ WARNING

Electrical shock hazard. Turn OFF electrical power supply at service panel.

2. Remove front jacket panel(s).

⚠ WARNING

Burn hazard. Verify heat exchanger, igniter, and flame sensor have cooled or use appropriate personal protection equipment.

3. Inspect combustion chamber through sight glass. Verify flame is not present. See Figure 1.
4. Turn off gas at manual main shutoff valve.

NOTICE

Use two (2) wrenches when tightening gas lines. Boiler components can be damaged if subjected to excessive torque.

5. Disconnect Gas Valve Harness. Loosen retaining screw and disconnect harness from gas valve. See figure 2.
6. Disconnect gas valve upper flange.
7. LP/propane units only. LP orifice is placed between upper flange and gas valve.
8. Remove Air Inlet Assembly
 - Disconnect igniter cable from igniter. Disconnect flame sensor cable from flame sensor.
 - Disconnect two (2) harness moxex connectors from blower.

Figure 1 - Sight Glass 299

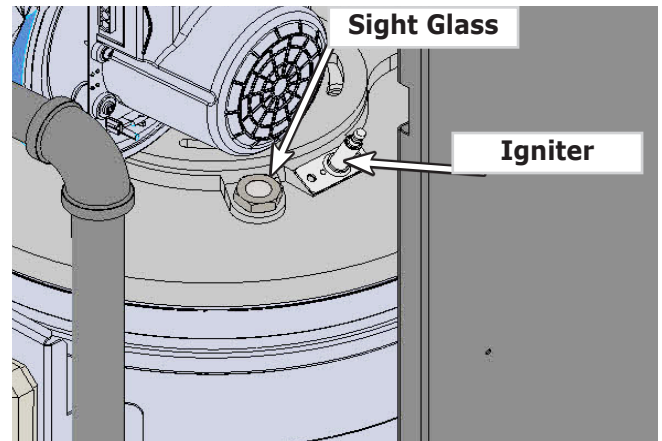
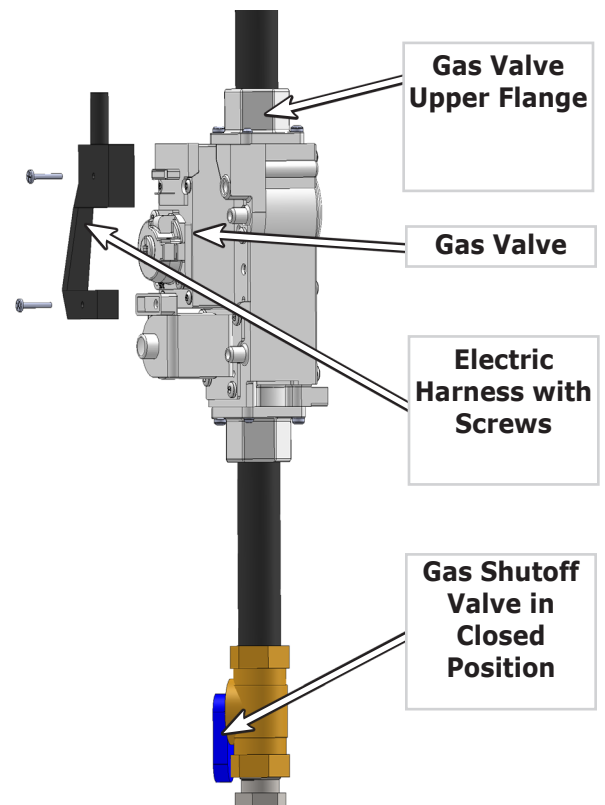


Figure 2 - Gas Valve with Harness Removed



BLOWER REPLACEMENT KIT INSTRUCTIONS

- Support air inlet assembly. Remove four (4) ¼-20 hex flange nuts securing air inlet disc to heat exchanger using 7/16" deep well socket.
 - Remove four (4) hex nuts securing blower to air inlet disc. See figure 4.
9. Install New Blower. See Figure 4.
- Securely place 2 supplied plugs onto blower unused gas ports with teflon tape or pipe dope. Verify they are tightened.
 - Place new gasket to blower outlet. Align center opening and screw holes.
 - Place air inlet to blower outlet with alignment noted or marked in step 8 above. Secure with four (4) 10-32 x ½" cap screws using 4mm Allen wrench.
10. Install Air Inlet Assembly
- Replace existing burner gasket with new gasket provided with kit. Align gasket with studs in heat exchanger.
 - Place air inlet assembly onto heat exchanger. Secure hand tight with four (4) ¼-20 hex flange nuts. See Figure 6, page 3.
 - Verify minimum ⅛" clearance between blower and piping. Complete tightening nuts.
 - Connect two (2) harness connectors to blower. Attach flame sensor cable to flame sensor. Attach igniter cable to igniter

11. Install gas valve upper flange on to gas valve.
12. Install Gas Valve Harness. Attach gas valve harness to gas valve. Secure with integral screw. See figure 2.
13. Gas Line Leak Test
- Turn on gas at manual main gas shutoff valve.
 - Check for gas line leaks using gas detector, noncorrosive detection fluid, or other leak detection method acceptable to authority having jurisdiction. Correct leaks immediately.

⚠ DANGER

Fire hazard. Do not use matches, candles, open flames, or other methods providing ignition source. Failure to comply will result in death or serious injury.

14. General Finish Instructions

- Resume operation using OPERATING INSTRUCTIONS found on Operating Instructions label on boiler or in Installation, Operation & Maintenance Manual.
- Verify proper operation by following START UP PROCEDURE in Installation, Operation & Maintenance Manual.
- Install front jacket panel(s).

Figure 3 - Gas Valve Location - In Closed Position

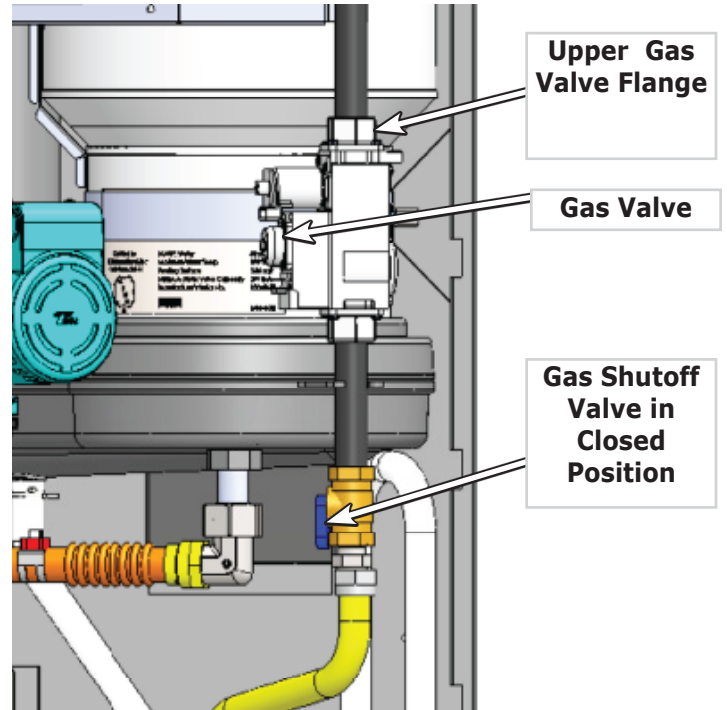
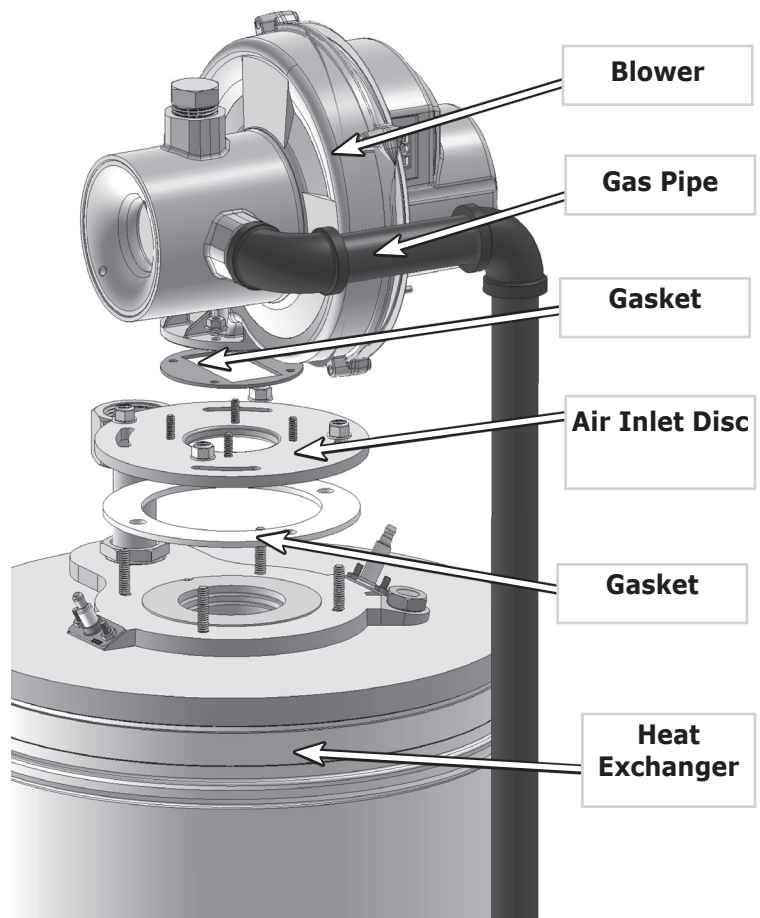
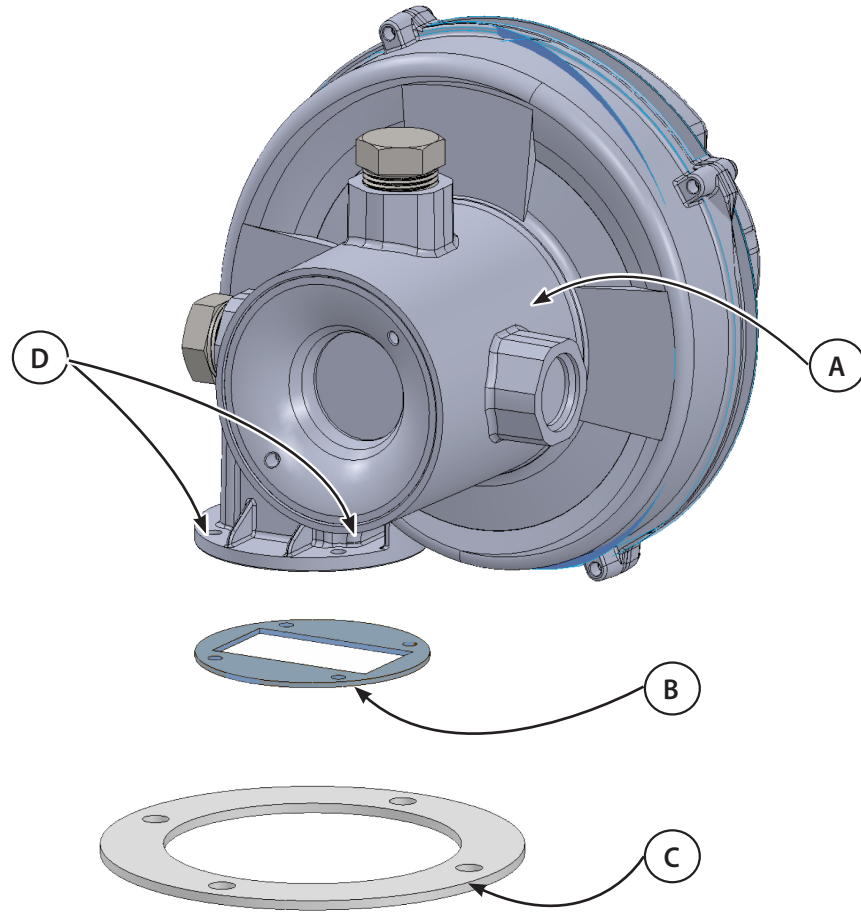


Figure 4 - Blower Assembly



BLOWER REPLACEMENT KIT INSTRUCTIONS



299 Blower Kit # 55002812				
	ITEM	DESCRIPTION	PART #	QTY
Blower Motor Kit #55002812 includes all items listed	A	Blower, 120 V 50/60 HZ, NRG137	-	1
	B	Gasket, Fan/Transition Piece	240011291	1
	C	Gasket	240009969	1
	D	1/4-20 Hex Flange Nut	-	4
	*	Instructions	240010105	1

