



RETROAIRE™

The Right Fit for Comfort

RQTH

Vertical Packaged Terminal Heat Pump

Replacement Parts Manual

Direct Replacement for
1.5 & 2 Ton Carrier 50QT

Ordering Instructions

Order Parts through your nearest supplier.

When ordering parts, obtain Model Number and Serial Number
from data plate on your unit

Include following information when ordering.

Part Number _____

Part Description _____

Model Number _____

Serial Number _____



ECR International Inc
2201 Dwyer Avenue
Utica, NY 13501
Phone: 1.800.325.5479
web: www.enviromaster.com

P/N 240010321, Rev. B [05/12/2014]

RQTH 1.5 & 2 Ton Heat Pump with Electric Heat

Replacement Model			Refrig. Cycle	Cooling Capacity		Voltage	Electric Heat	Controls	Air Options	Open	Condenser Coil	Compressor	Special Revision	Product Revision
1	2	3	4	5	6	7	8	9	10	11	12	13	14	15
R	Q	T	H			D		1	B	A	B	S	0	A
RQT Series: Carrier 50QT 1.5 & 2T Repl			H - Heat Pump	18 - 18,000 Btuh 24 - 24,000 Btuh		* * *		1 - Remote, No Disconnect Switch	B - Standard	A - Standard B - Standard (Al/Cu)		S - Scroll	0 - Standard A-Z - Special	A - A Rev
						* D - 208-230/1/60Hz								
							5 - 5kW Electric (18k) 7 - 7kW Electric (18&24k) 1 - 10kW Electric (24k)							

Notes:

All units are hard-wired, no line cord is provided

Consult manufacture for availability items may be subject to minimum order quantities.

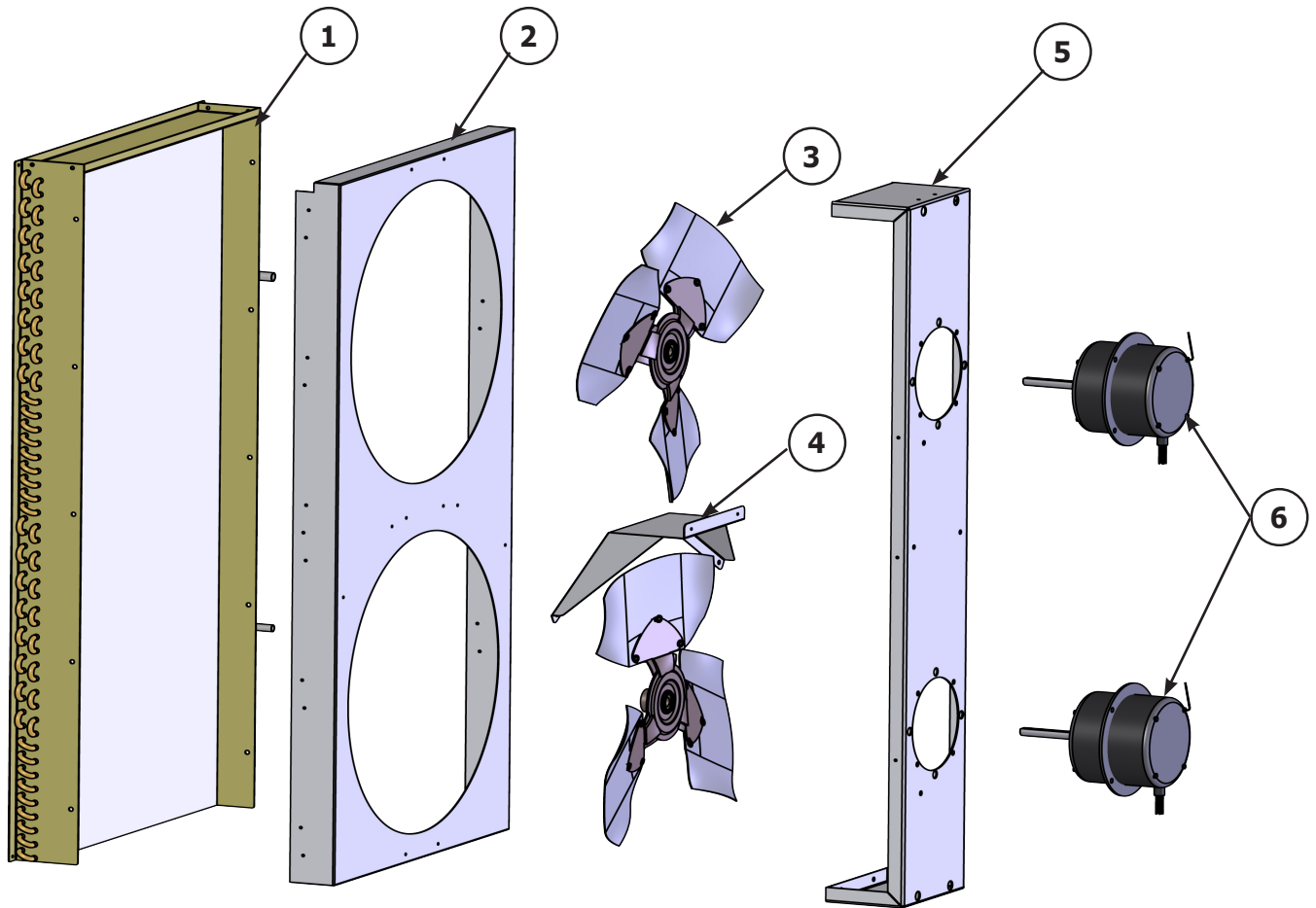
[Limited Warranty](#) applies, 1-year parts and 5-year compressor.

Information and specifications outlined in this manual in effect at the time of printing of this manual. ECR International reserves the right to discontinue, change specifications or system design at any time without notice and without incurring any obligation, whatsoever.

Table of Contents

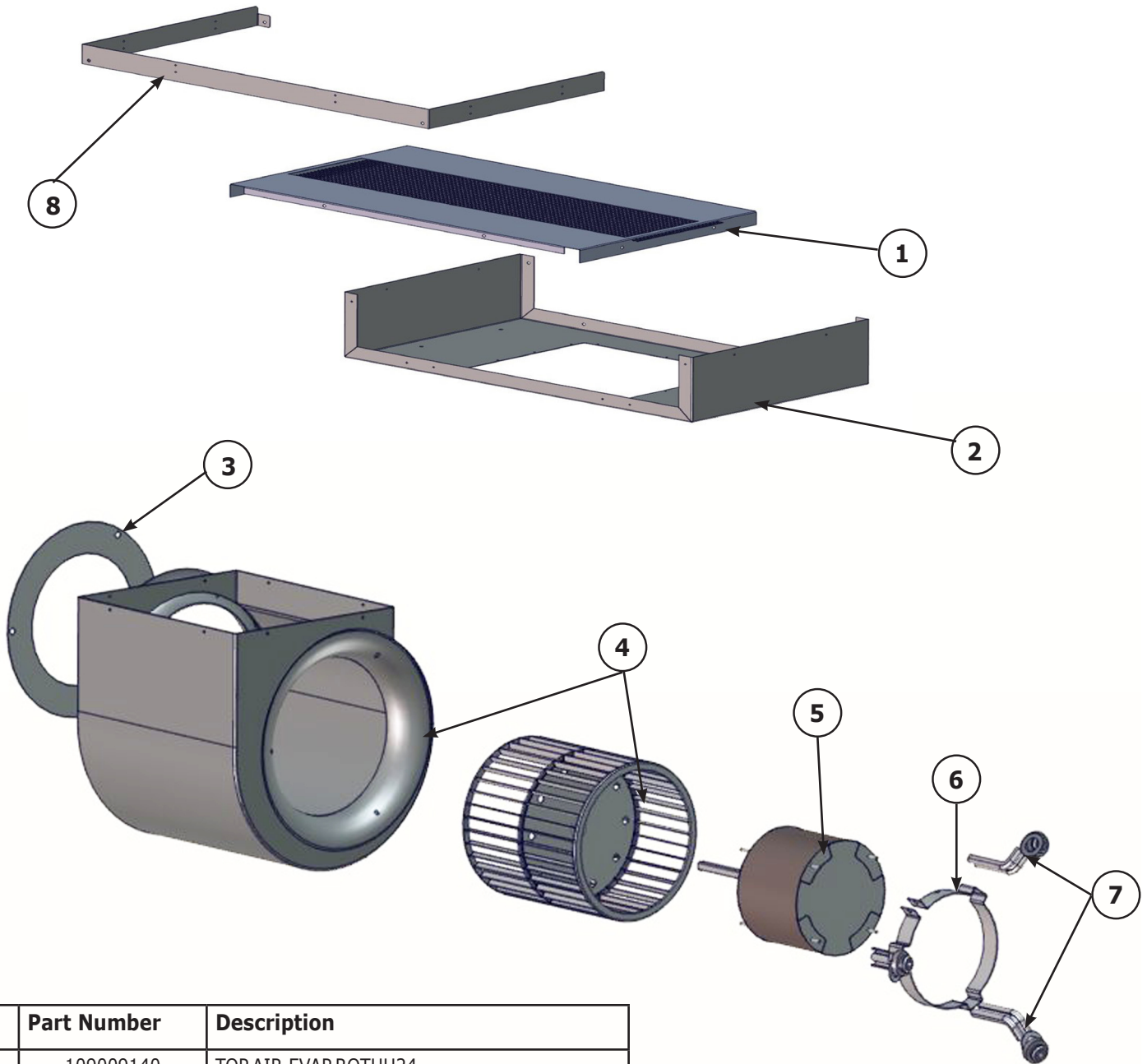
Condenser Assembly	4
Blower Assembly	5
Electric Heat Assembly	6
Control Assembly	7
Refrigeration Circuit Assembly and Chassis.....	8

Condenser Assembly



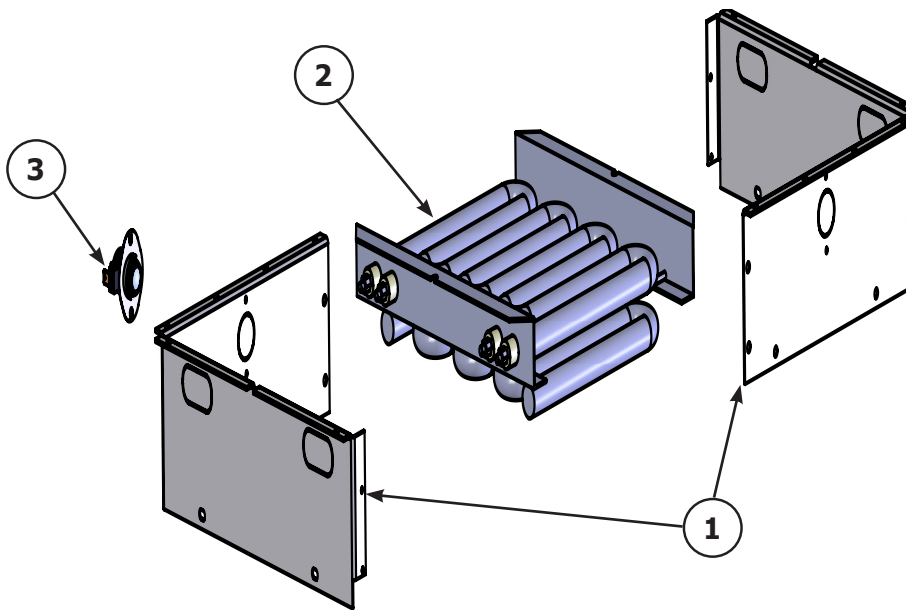
Ref #	Part Number	Description
1	104000497	COIL,COND,20.5X38,15/2X50X482/20-4-2(0)
	104000507	COIL,COND,24K,20.5X38,15/2X50X482/20-4>2
2	109009097	SHROUD,COND
3	240004481	BLADE,FAN,16",S1C 09-12,C2C/H 9-15
4	109009099	SUPT,MOUNT,MTR,RQTH
5	109009098	MOUNT,MTR,RQTH
6	102000162	MTR,COND,208/230V,1100RPM,CLMSHEL,+

Blower Assembly



Ref #	Part Number	Description
1	109009140	TOP,AIR,EVAP,RQTHH24
2	109008797	CLCTR,AIR,EVAP,RQTH,RPL
3	109007468 (18K)	CVR,5" DIA RESTRICTOR PLT,BLWR,VPRC/RH+
	109009138 (24K)	CVR,DIA RESTRICTOR PLT,BLWR,VPRC/RH+
4	240006899	HSG,BLWR,W/INLET RING,VPAC/
5	102000090	MTR,EVAP,208/230V,VPAC/HP24
6	240003093	BRKT,MTR,MTG,BAND
7	240006319	ARM,BRKT,MTG,MTR,3 PC,VPAC/
8	109009344	EVAP, EXTENSION, TOP

Electric Heat Assembly



5KW HEATER ASSEMBLY

Ref #	Part Number	Description
1	109009138	ASSY,WLD,GRD,HTR,RQTH
2	240003581	HTR,5KW,230V,7.25KW 277V
3	240002127	SW,LMT,150-170,75TF,CLOSE @135

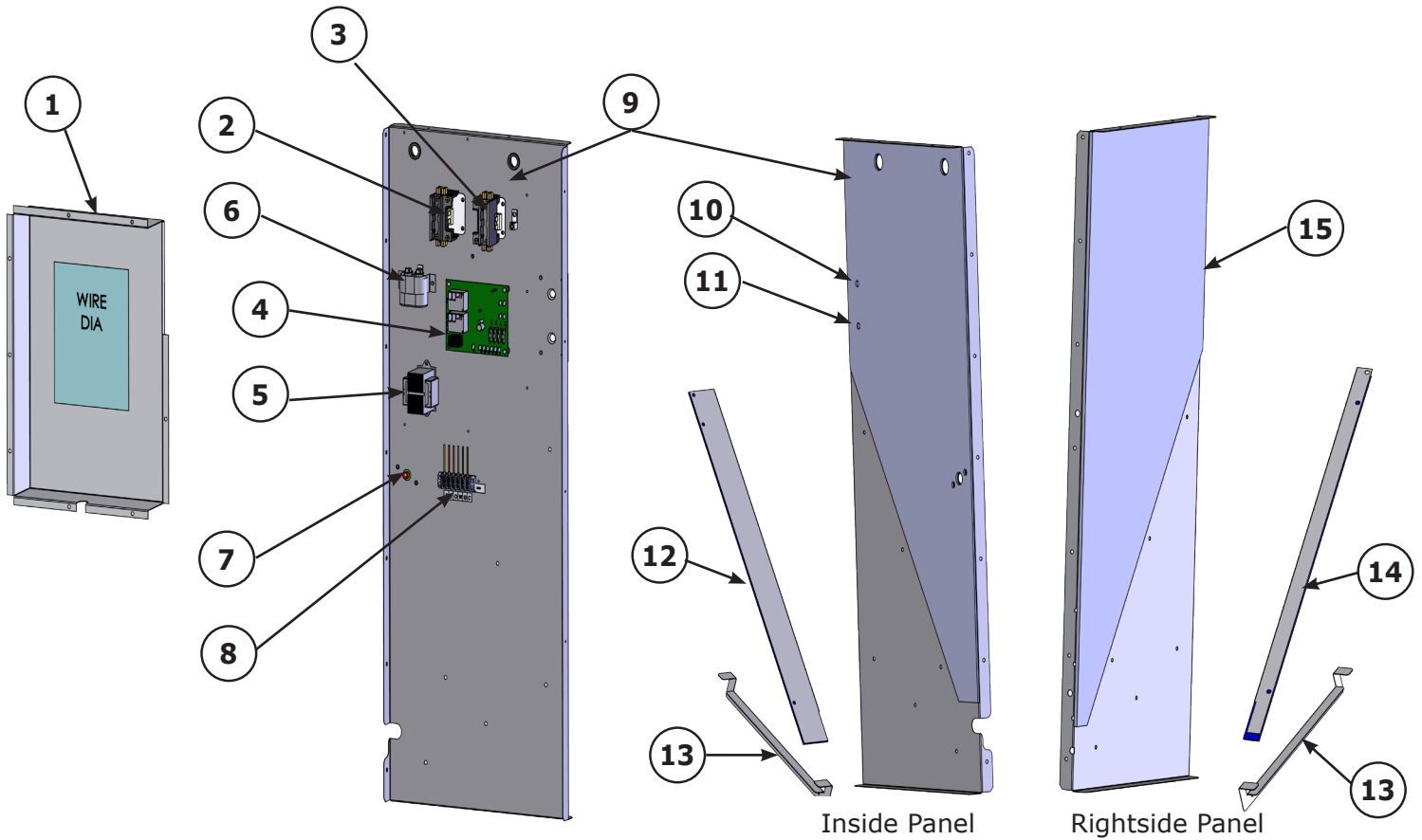
10KW HEATER ASSEMBLY

Ref #	Part Number	Description
1	109009138	ASSY,WLD,GRD,HTR,RQTH
2	240003000	HTR,10KW,230V,RC/RH-71,21-3361-01
3	240002127	SW,LMT,150-170,75TF,CLOSE @135

7KW HEATER ASSEMBLY

Ref #	Part Number	Description
1	109009138	ASSY,WLD,GRD,HTR,RQTH
2	240002496	HTR,7KW,230V,VPAC/VPHP 19/24, 21-3361-00
3	240002127	SW,LMT,150-170,75TF,CLOSE @135

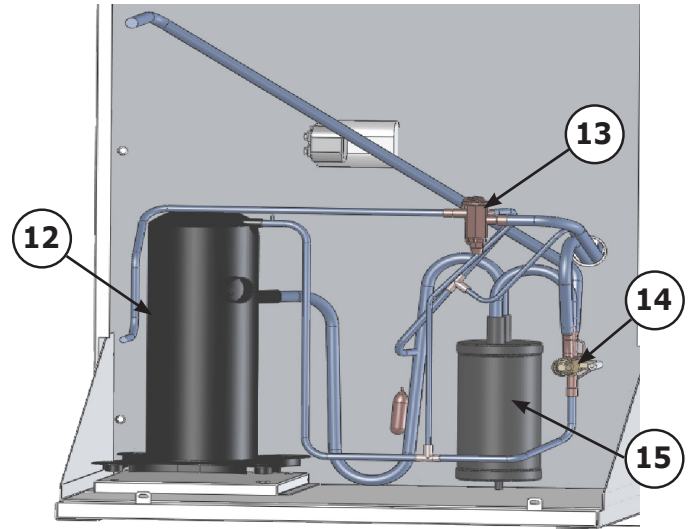
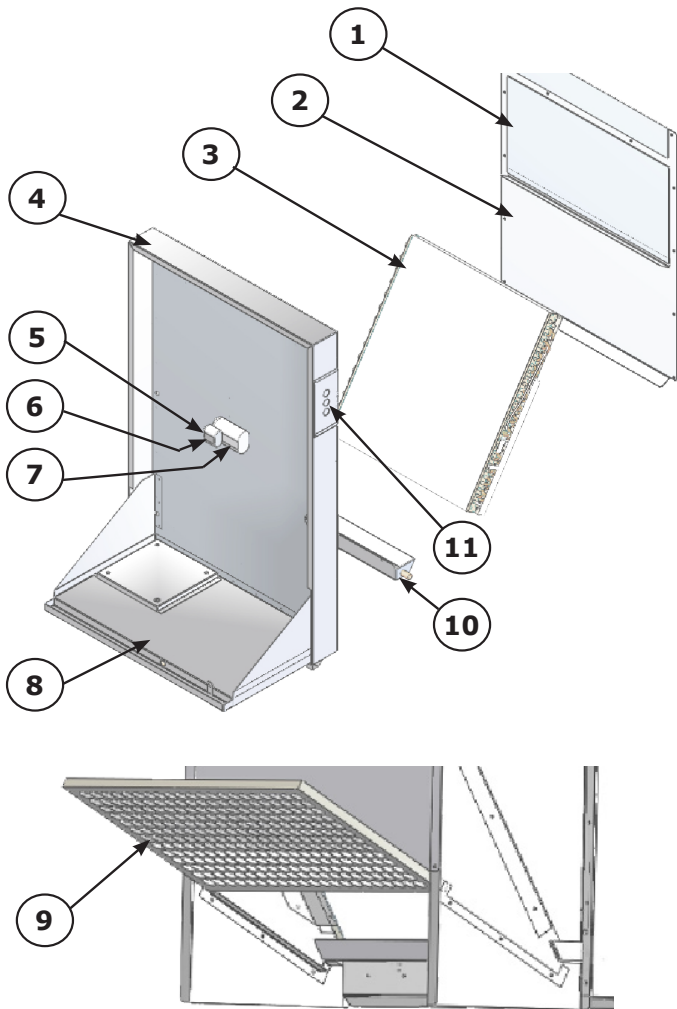
Control Assembly



Ref #	Part Number	Description
1	109008808	BOX,CTRL,CVR,RQTH,
2	240002653	CONTACTOR, COMPRESSOR
3	240000499	CONTACTOR,40A, EL, HT, 7+10 Kw
	117000001	CONTACTOR, 30A EL, HT, 5Kw
4	240007903	CTRL,BOARD,UM
5	240001263	TFMR,208/230V,50/60H
6	126000003	CAPC,370V/5,1-1/4x2
	109000050	STRAP,CAPC MTG,
7	240007109	SW,HP,M-RESET
8	240007195	HARN-1,TERM STRIP
9	109008795	SUPT,COIL,EVAP,LT,R

Ref #	Part Number	Description
10	109009143	PLATE,SRVS,VLV,
11	216000001	FTG,SHRADER,VAL
12	109008801	BRKT,SUPT,COIL,LT,
13	109008809	BRKT,FLTR,CHNL
14	109008802	BRKT,SUPT,COIL,RT,
15	109008796	SUPT,COIL,EVAP,RT,

Refrigeration Circuit Assembly and Chassis



Ref #	Part Number	Description
1	109009142	BLKOFF,COIL,RQTH 18/24
2	109008805	PNL,CVR,EVAP,UPR,RQTH,
3	104000497	COIL,COND,20.5X38,15/2X50
4	109009102	ASSY,WLD,BLKHD
5	109000442	STRAP,CAPC,OVAL,PGY BCK
6	126000003 (18K)	CAPC,370V/5,1-1/4x2x1.6"
	126000008 (24K)	CAPC,370V/40,1-3/4",OVAL
7	240000496	CAPC,370V/45/5,1-3/4x2.8
8	109009101	ASSY,WLD,BASE,PAN,CON

Ref #	Part Number	Description
9	240003102	FLTR,RETURN AIR,16"X25"X1"
10	109008804W	ASSY,DRN PAN,RQTH
11	109008794	PNL,CVR,PWR,RQTH
12	101000323 (18k)	COMPR,18BTU,SCRL,COPE,
	101000371 (24K)	COMPR,24BTU,208/230V,SCR
13	240010464	VLV, THERMO EXP, BI-FLOW, RQTH 18
	240010465	VLV, THERMO EXP BI-FLOW, RQTH 24
14	240007059	VLV,RVSG,VPRH 18/24,V3-
	240004640	VLV,RVSG,SOL,24V,LDK,RED
15	136000001	ACUM,SUCT,5/8",60 OZ,09