

 **EMI** Presents
ENVIROair

Single and Multi-Zone Ductless Inverter Split Systems

SZI Series

Replacement Parts Manual

Air Handler (Indoor) Models:
ZWHA/B

Condenser (Outdoor) Models:
ZHA/B

Ordering Instructions

Order Parts through your nearest supplier.

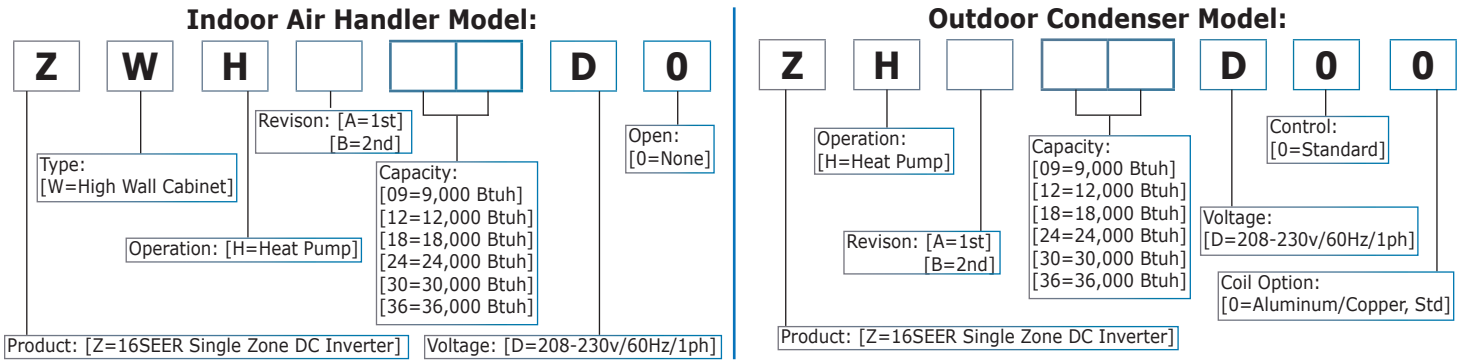
When ordering parts, obtain Model Number and Serial Number from data plate on your unit.

Include following information when ordering.

Part Number _____
Part Description _____
Air Handler Model Number _____
Air Handler Serial Number _____
Condenser Model Number _____
Condenser Serial Number _____



SZI Series Model Decoding



Information and specifications outlined in this manual in effect at the time of printing of this manual. ECR International reserves the right to discontinue, change specifications or system design at any time without notice and without incurring any obligation, whatsoever.

[EMI Limited Warranty](#) applies, 1-year parts and 5-year compressor.

Table of Contents

SZI Series - Active Models

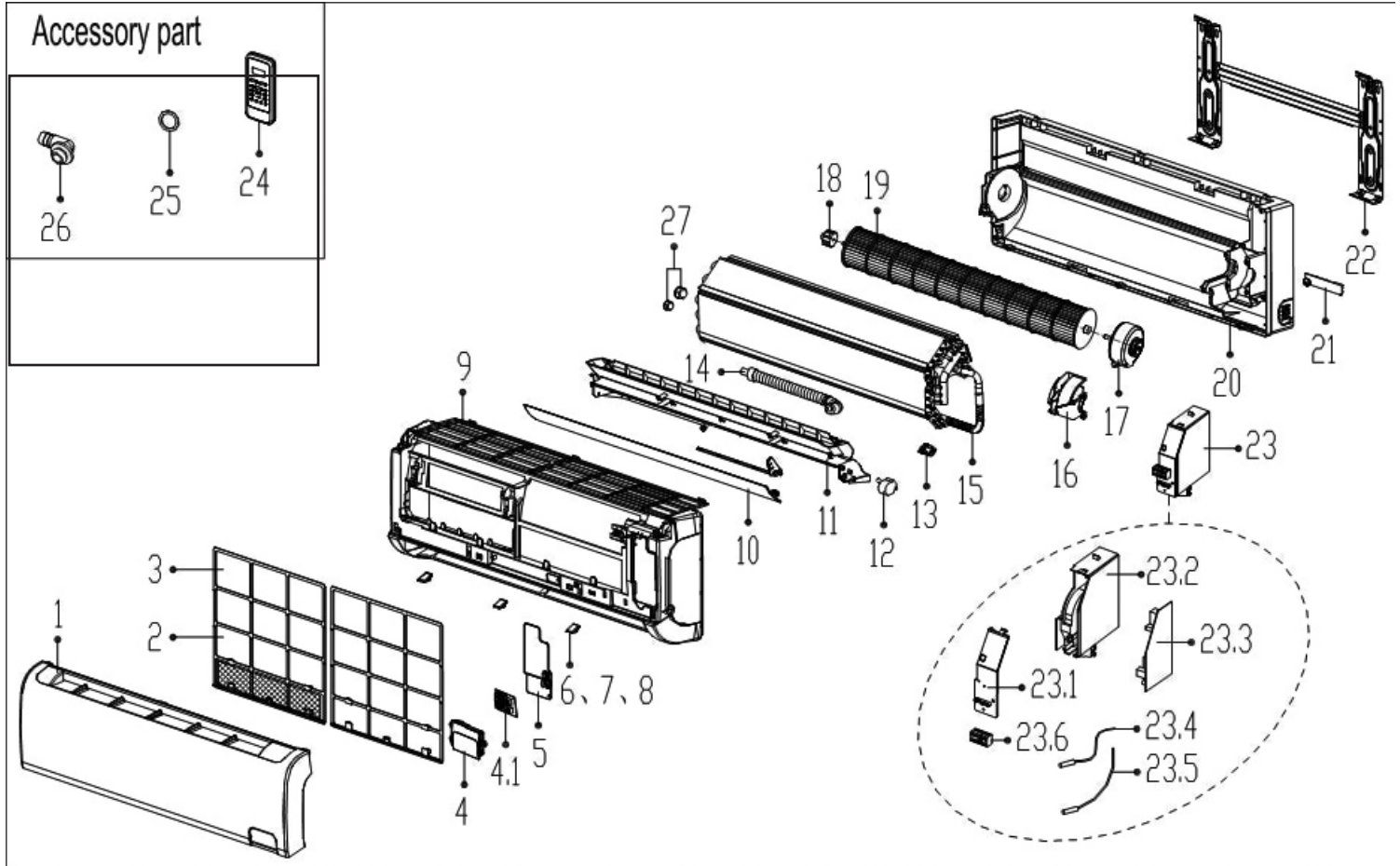
SZI Series ZWHB09D0: 9,000 Btuh 230v Heat Pump 16SEER High Wall Air Handler	4
SZI Series ZHB09D00: 9,000 Btuh 230v Heat Pump 16SEER Single Zone Condenser.....	5
SZI Series ZWHB12D0: 12,000 Btuh 230v Heat Pump 16SEER High Wall Air Handler	6
SZI Series ZHB12D00: 12,000 Btuh 230v Heat Pump 16SEER Single Zone Condenser.....	7
SZI Series ZWHB18D0: 18,000 Btuh 230v Heat Pump 16SEER High Wall Air Handler	8
SZI Series ZHB18D00: 18,000 Btuh 230v Heat Pump 16SEER Single Zone Condenser.....	9
SZI Series ZWHB24D0: 24,000 Btuh 230v Heat Pump 16SEER High Wall Air Handler.....	10
SZI Series ZHB24D00: 24,000 Btuh 230v Heat Pump 16SEER Single Zone Condenser.....	11
SZI Series ZWHA30D0: 30,000 Btuh 230v Heat Pump 16SEER High Wall Air Handler.....	12
SZI Series ZHA30D00: 30,000 Btuh 230v Heat Pump 16SEER Single Zone Condenser.....	13
SZI Series ZWHA36D0: 36,000 Btuh 230v Heat Pump 16SEER High Wall Air Handler.....	14
SZI Series ZHA36D00: 36,000 Btuh 230v Heat Pump 16SEER Single Zone Condenser.....	15

SZI Series - Inactive Models

SZI Series ZWHA09D0: 9,000 Btuh 230v Heat Pump 16SEER High Wall Air Handler.....	16
SZI Series ZHA09D00: 9,000 Btuh 230v Heat Pump 16SEER Single Zone Condenser.....	17
SZI Series ZWHA12D0: 12,000 Btuh 230v Heat Pump 16SEER High Wall Air Handler.....	18
SZI Series ZHA12D00: 12,000 Btuh 230v Heat Pump 16SEER Single Zone Condenser.....	19
SZI Series ZWHA18D0: 18,000 Btuh 230v Heat Pump 16SEER High Wall Air Handler.....	20
SZI Series ZHA18D00: 18,000 Btuh 230v Heat Pump 16SEER Single Zone Condenser.....	21
SZI Series ZWHA24D0: 24,000 Btuh 230v Heat Pump 16SEER High Wall Air Handler.....	22
SZI Series ZHA24D00: 24,000 Btuh 230v Heat Pump 16SEER Single Zone Condenser.....	23

Replacement parts are available for "Inactive Models". Consult Factory for availability, lead times and minimum order quantities.

SZI Series - Active Model 9,000 Btuh 230v Heat Pump ZWHB09D0 High-Wall Air Handler

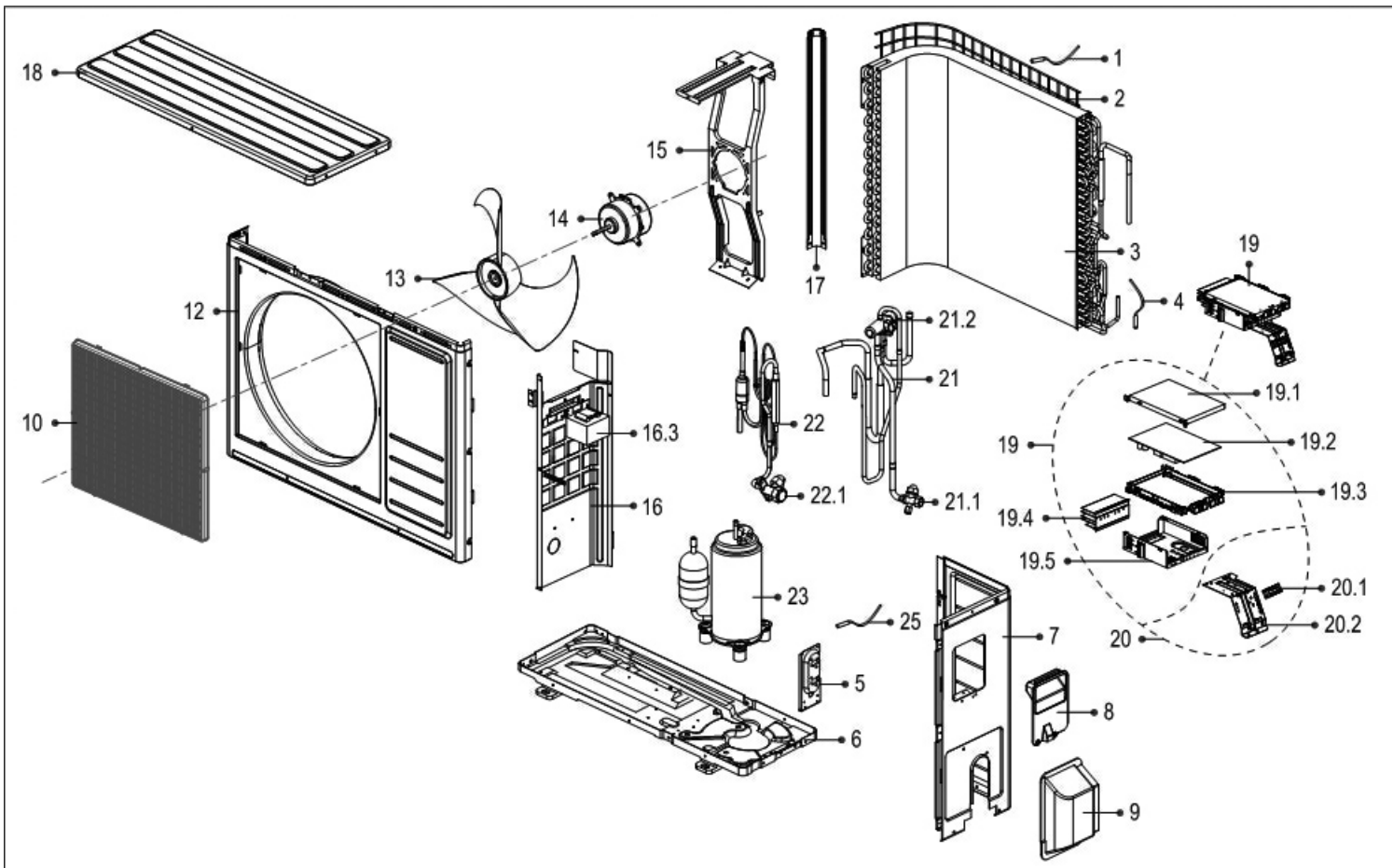


Ref#	Part Number	Description	Qty
1	2011325A4559	Panel assembly	1
2	201131410703	Air freshening filter	1
3	201132591022	Air filter	2
4	203332390661	Display box assembly	1
4.1	#NA	Display board assembly	1
5	201132591074	Cover of electrical equipment	1
6	#NA	Screw cap (left)	1
7	#NA	Screw cap (middle)	1
8	#NA	Screw cap (right)	1
9	201132590918	Panel frame assembly	1
10	201132590920	Horizontal louver	1
11	#NA	Air outlet assembly	1
12	202400200006	Louver motor	1
13	201102000305	Fix clamp of temperature sensor	1
14	201101020038	Drain hose	1
15	201532590469	Evaporator assembly	1
16	#NA	Fan motor cover	1
17	202400370022	Brushless DC Motor	1

Ref#	Part Number	Description	Qty
18	202719900606	Bearing base	1
19	201100200039	Cross flow fan	1
20	#NA	Chassis assembly	1
21	201130100204	Pipe clamp board	1
22	201230390006	Installation plate	1
23	#NA	Electronic control box assembly	1
23.1	#NA	Cover of electronic control box	1
23.2	#NA	Electronic control box	1
23.3	201332301356	Indoor main control board assembly	1
23.4	202432390005	Ambient temperature sensor assembly	1
23.5	202301300080	Pipe temperature sensor assembly	1
23.6	#NA	Wire joint	1
24	240010011	Remote Controller	1
25	202720090001	Seal ring	1
26	201101020011	Drain joint	1
27	201600320001	Pipe nut	1
27	201600320000	Pipe nut	1

Items may be subject to minimum order quantity.
#NA: Contact Factory for availability and lead time.

SZI Series - Active Model 9,000 Btuh 230v Heat Pump ZHB09D00 Single Zone Condenser

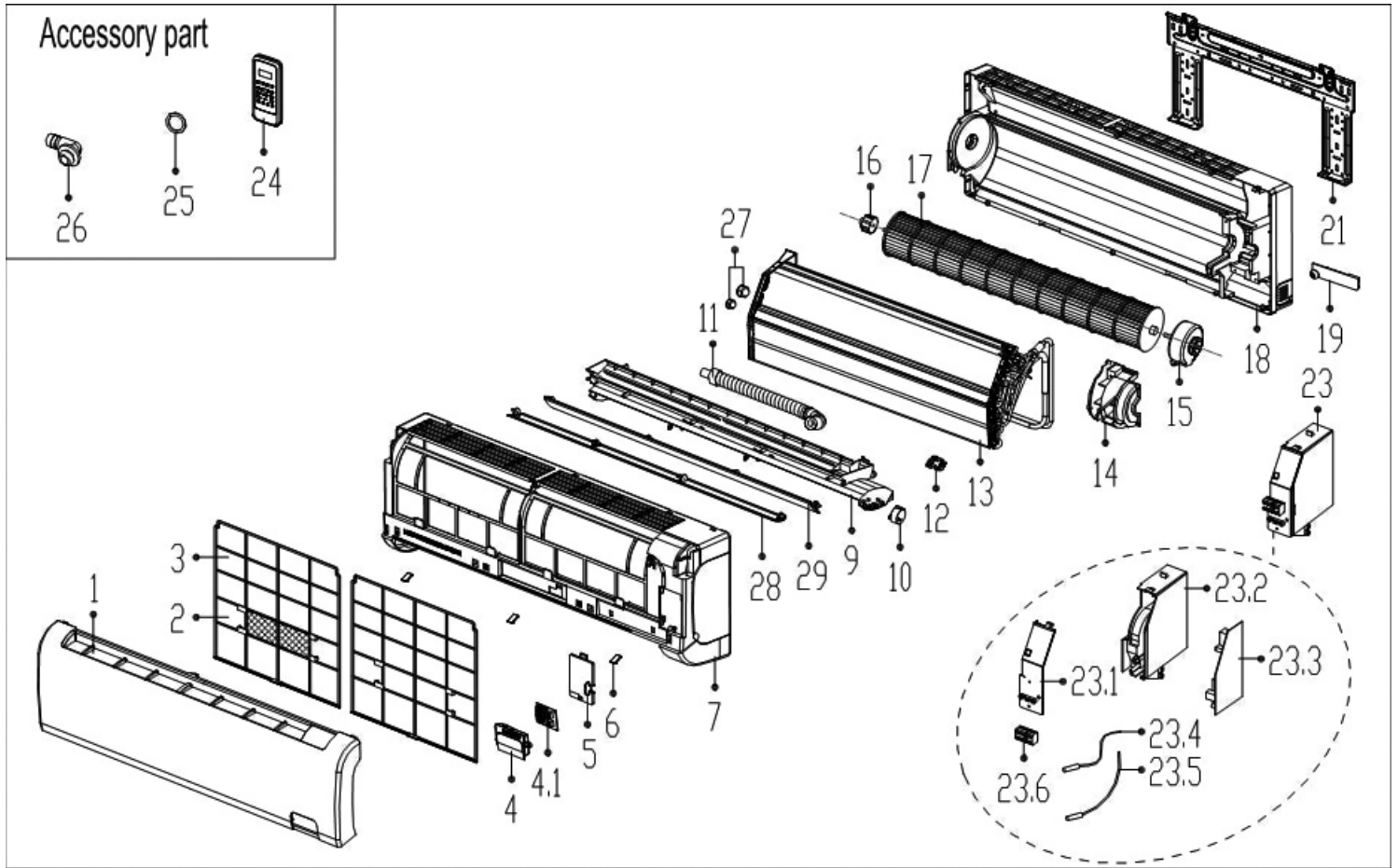


Ref#	Part Number	Description	Qty
1	202440220061	Ambient temperature sensor assembly	1
2	#NA	Rear net	1
3	201537390033	Condenser assembly	1
4	202440500004	Pipe temperature sensor assembly	1
5	#NA	Valve plate	1
6	#NA	Chassis assembly	1
7	#NA	Right clapboard assembly	1
8	#NA	Big handle	1
9	#NA	Water collector	1
10	201137590017	Air outlet grille	1
12	201237400392	Front panel	1
13	201100320625	Axial flow fan	1
14	202400401345	Asynchronous motor	1
15	#NA	Supporter assembly of fan motor	1
16	#NA	Partition board assembly	1
16.3	202301000867	Reactor	1
17	201237400400	Left supporter	1

Ref#	Part Number	Description	Qty
18	201237900028	Top cover assembly	1
19	#NA	Electronic control box assembly	1
19.1	#NA	Cover of electronic control box	1
19.2	2013375A0091	Outdoor main control board assembly	1
19.3	#NA	Support of electronic control box	1
19.4	#NA	Radiator	1
19.5	#NA	Electronic installing box	1
20	203337590049	Terminal board assembly	1
20.1	#NA	Wire joint	1
20.2	201237590046	Terminal board	1
21	#NA	4-Ways valve assembly	1
21.1	201600720095	Gas valve	1
21.2	201600600521	4-Ways valve	1
22	201637390335	Liquid valve assembly	1
22.1	201600740523	Liquid valve	1
23	201400611186	Compressor	1
25	202301310068	Discharge temperature sensor assembly	1

Items may be subject to minimum order quantity.
#NA: Contact Factory for availability and lead time.

SZI Series - Active Model 12,000 Btuh 230v Heat Pump ZWHB12D0 High-Wall Air Handler



Ref#	Part Number	Description	Qty
1	2011328A2134	Panel assembly	1
2	201131410703	Air freshening filter	1
3	201132890704	Air filter	2
4	203332890292	Display box assembly	1
4.1	#NA	Display board assembly	1
5	#NA	Cover of electrical equipment	1
6	201132890619	Screw cap	3
7	201132890616	Panel frame assembly	1
9	#NA	Air outlet assembly	1
10	202400200120	Louver motor	1
11	201101020038	Drain hose	1
12	201102000305	Fix clamp of temperature sensor	1
13	201532790059	Evaporator assembly	1
14	#NA	Fan motor cover	1
15	202400300517	Brushless DC Motor	1
16	202719900606	Bearing base	1
17	201100200014	Cross flow fan	1

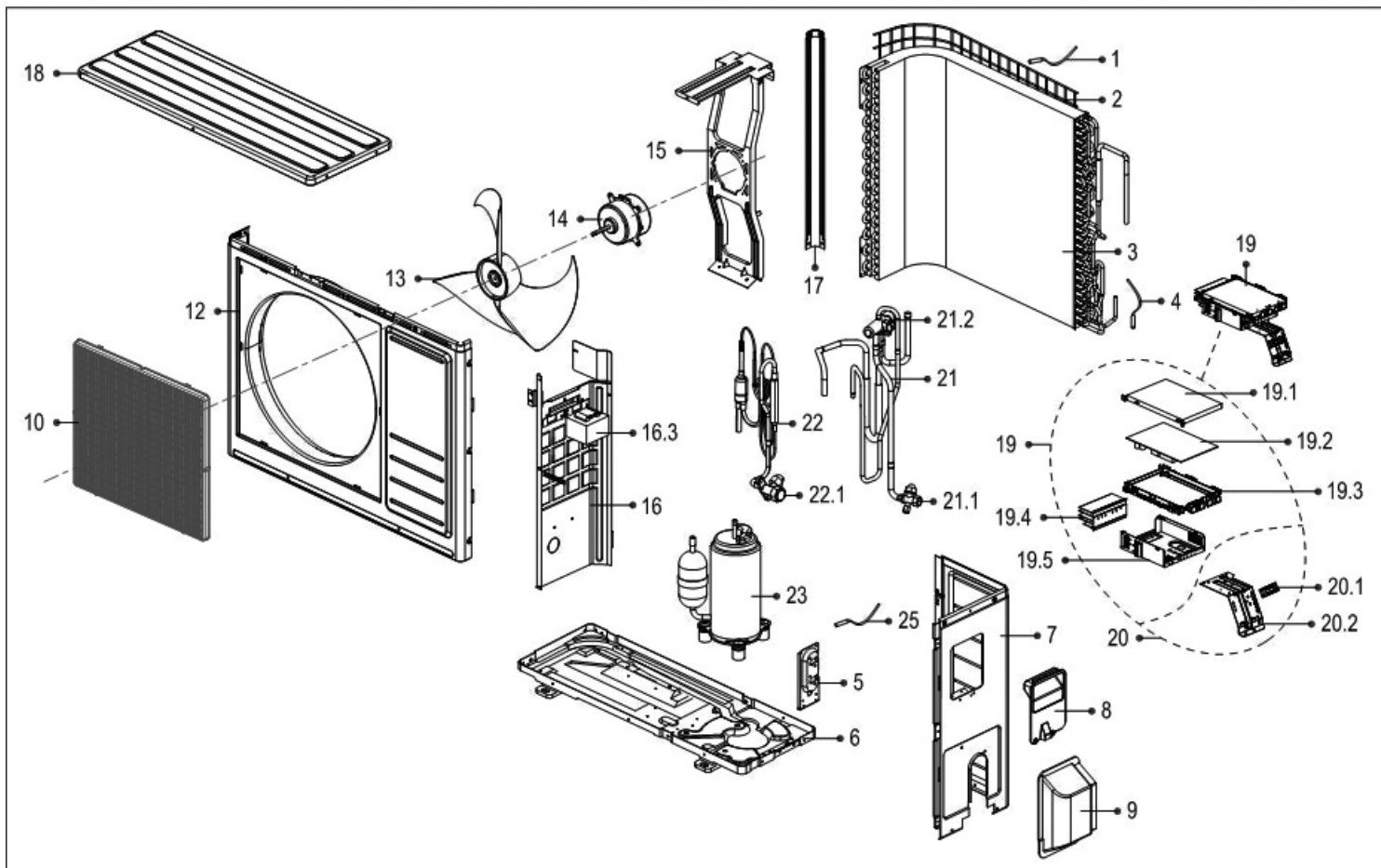
Ref#	Part Number	Description	Qty
18	#NA	Chassis assembly	1
19	201232800103	Pipe clamp board	1
21	201232790012	Installation plate	1
23	#NA	Electronic control box assembly	1
23.1	#NA	Cover of electronic control box	1
23.2	#NA	Electronic control box	1
23.3	201332591295	Indoor main control board assembly	1
23.4	202433190000	Ambient temperature sensor assembly	1
23.5	202301300080	Pipe temperature sensor assembly	1
23.6	#NA	Wire joint	1
24	240010011	Remote Controller	1
25	202720090001	Seal ring	1
26	201101020011	Drain joint	1
27	201600320000	Pipe nut	1
27	201600320002	Pipe nut	1
28	201132890617	Horizontal louver (above)	1
29	201132890618	Horizontal louver (below)	1

Items may be subject to minimum order quantity.
#NA: Contact Factory for availability and lead time.

SZI Series - Active Model

12,000 Btuh 230v Heat Pump **ZHB12D00**

Single Zone Condenser

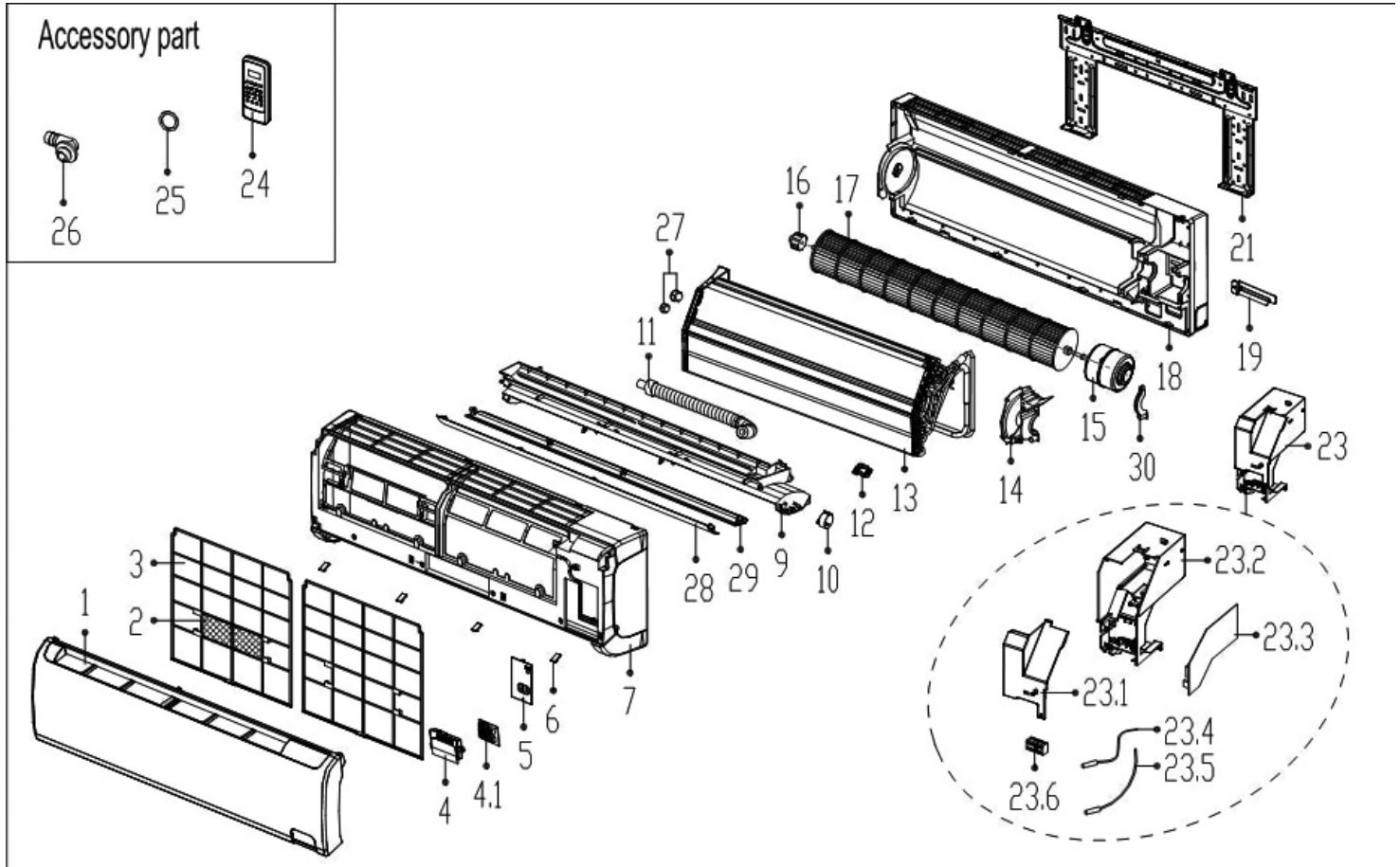


Ref#	Part Number	Description	Qty
1	202440220061	Ambient temperature sensor assembly	1
2	#NA	Rear net	1
3	201537390033	Condenser assembly	1
4	202440500004	Pipe temperature sensor assembly	1
5	#NA	Valve plate	1
6	#NA	Chassis assembly	1
7	#NA	Right clapboard assembly	1
8	#NA	Big handle	1
9	#NA	Water collector	1
10	201137590017	Air outlet grille	1
12	201237400392	Front panel	1
13	201100320625	Axial flow fan	1
14	202400401345	Asynchronous motor	1
15	#NA	Supporter assembly of fan motor	1
16	#NA	Partition board assembly	1
16.3	202301000867	Reactor	1
17	201237400400	Left supporter	1

Ref#	Part Number	Description	Qty
18	201237900028	Top cover assembly	1
19	#NA	Electronic control box assembly	1
19.1	#NA	Cover of electronic control box	1
19.2	2013375A0091	Outdoor main control board assembly	1
19.3	#NA	Support of electronic control box	1
19.4	#NA	Radiator	1
19.5	#NA	Electronic installing box	1
20	203337590049	Terminal board assembly	1
20.1	#NA	Wire joint	1
20.2	201237590046	Terminal board	1
21	#NA	4-Ways valve assembly	1
21.1	201600720195	Gas valve	1
21.2	201600600521	4-Ways valve	1
22	#NA	Liquid valve assembly	1
22.1	201600740523	Liquid valve	1
23	201400611186	Compressor	1
25	202301310068	Discharge temperature sensor assembly	1

Items may be subject to minimum order quantity.
 #NA: Contact Factory for availability and lead time.

SZI Series - Active Model 18,000 Btuh 230v Heat Pump ZWHB18D0 High-Wall Air Handler

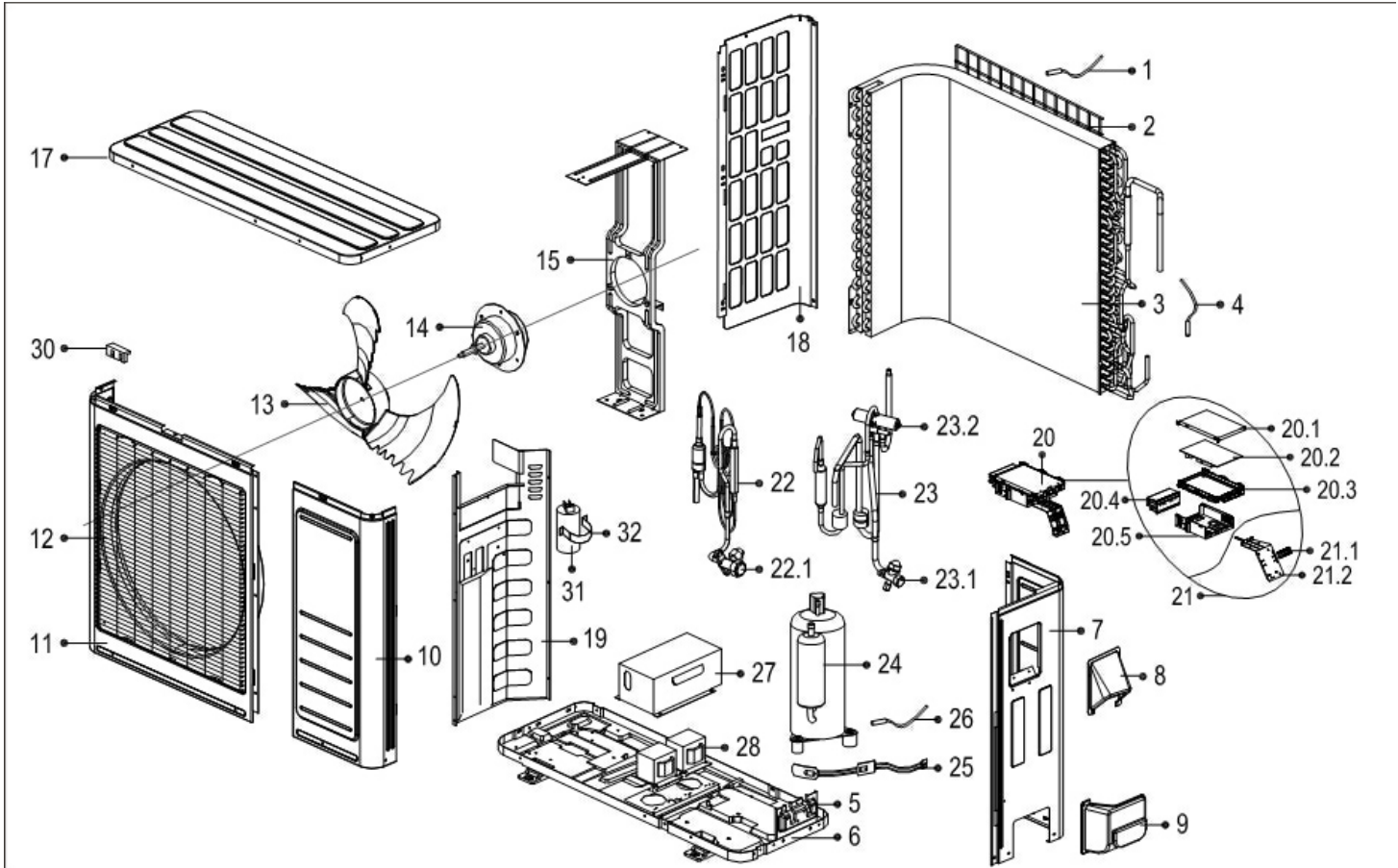


Ref#	Part Number	Description	Qty
1	2011330A4490	Panel assembly	1
2	201131410703	Air freshening filter	1
3	201133091017	Air filter	2
4	203332890279	Display box assembly	1
4.1	201332190314	Display board assembly	1
5	#NA	Cover of electrical equipment	1
6	201133090623	Screw cap	4
7	201133090938	Panel frame assembly	1
9	#NA	Air outlet assembly	1
10	202400200004	Louver motor	1
11	201101020038	Drain hose	1
12	201102000305	Fix clamp of temperature sensor	1
13	201532990044	Evaporator assembly	1
14	#NA	Fan motor cover	1
15	202400300064	Brushless DC Motor	1
16	202719900606	Bearing base	1
17	2011002G0001	Cross flow fan	1

Ref#	Part Number	Description	Qty
18	#NA	Chassis assembly	1
19	201232800103	Pipe clamp board	1
21	201232990002	Installation plate	1
23	#NA	Electronic control box assembly	1
23.1	#NA	Cover of electronic control box	1
23.2	#NA	Electronic control box	1
23.3	201332890826	Indoor main control board assembly	1
23.4	202301300210	Ambient temperature sensor assembly	1
23.5	202301300077	Pipe temperature sensor assembly	1
23.6	#NA	Wire joint	1
24	240010011	Remote Controller	1
25	202720090001	Seal ring	1
26	201101020011	Drain joint	1
27	201600320003	Pipe nut	1
27	201600320001	Pipe nut	1
28	201133090939	Horizontal louver (above)	1
29	201133090940	Horizontal louver (below)	1
30	201133090167	Fixing board of fan motor	1

Items may be subject to minimum order quantity.
#NA: Contact Factory for availability and lead time.

SZI Series - Active Model 18,000 Btuh 230v Heat Pump **ZHB18D00** Single Zone Condenser

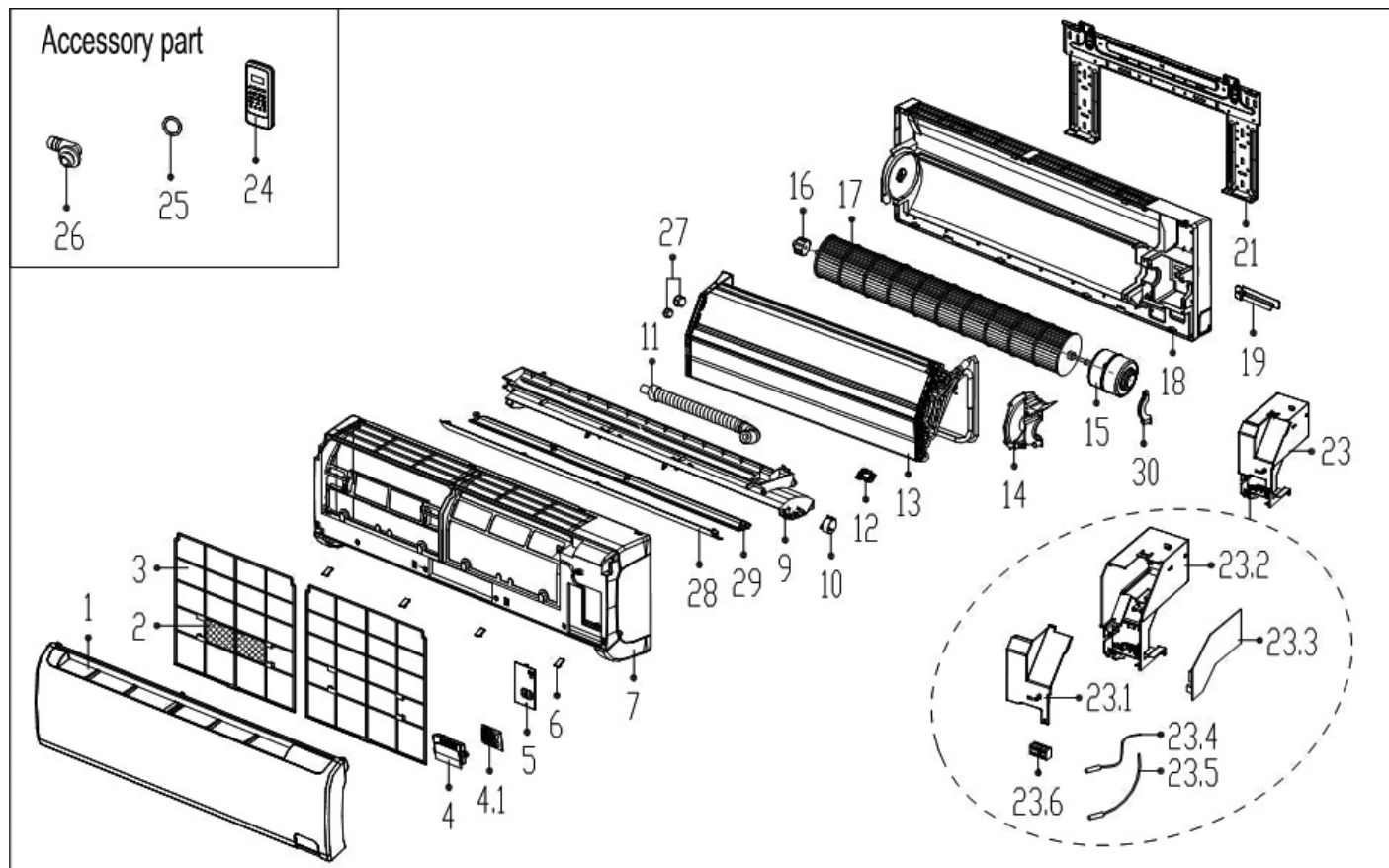


Ref#	Part Number	Description	Qty
1	202301310075	Ambient temperature sensor assembly	1
2	#NA	Rear net	1
3	201537990036	Condenser assembly	1
4	202440500004	Pipe temperature sensor assembly	1
5	#NA	Valve plate	1
6	#NA	Chassis assembly	1
7	#NA	Rear right clapboard assembly	1
8	#NA	Big handle	1
9	#NA	Water collector	1
10	#NA	Front right clapboard assembly	1
11	201248100356	Front panel	1
12	201237890112	Air outlet grille	1
13	201145500002	Axial flow fan	1
14	202400400173	Asynchronous motor	1
15	#NA	Supporter assembly of fan motor	1
17	201248100363	Top cover assembly	1
18	201248100364	Left supporter	1
19	#NA	Partition board assembly	1
20	#NA	Electronic control box assembly	1
20.1	#NA	Cover of electronic control box	1
20.2	2013380A0068	Outdoor main control board assembly	1

Ref#	Part Number	Description	Qty
20.3	#NA	Support of electronic control box	1
20.4	#NA	Radiator	1
20.5	#NA	Electronic installing box	1
21	203337990161	Terminal board assembly	1
21.1	#NA	Wire joint	1
21.2	201237890064	Terminal board	1
22	#NA	Liquid valve assembly	1
22.1	201600740704	Liquid valve	1
23	#NA	4-ways valve assembly	1
23.1	201600720296	Gas valve	1
23.2	201600690011	4-ways valve	1
24	201400600530	Compressor	1
25	202403100501	Crankcase electric heater	1
26	202301310068	Discharge temperature sensor assembly	1
27	#NA	Cover of inductance	1
28	202301000819	Reactor	1
28	202301050026	Reactor	1
30	201135110801	Clamp of front net	8
31	202401000078	Capacitor of compressor	1
32	#NA	Capacitor clip	1

Items may be subject to minimum order quantity.
#NA: Contact Factory for availability and lead time.

SZI Series - Active Model 24,000 Btuh 230v Heat Pump ZWHB24D0 High-Wall Air Handler

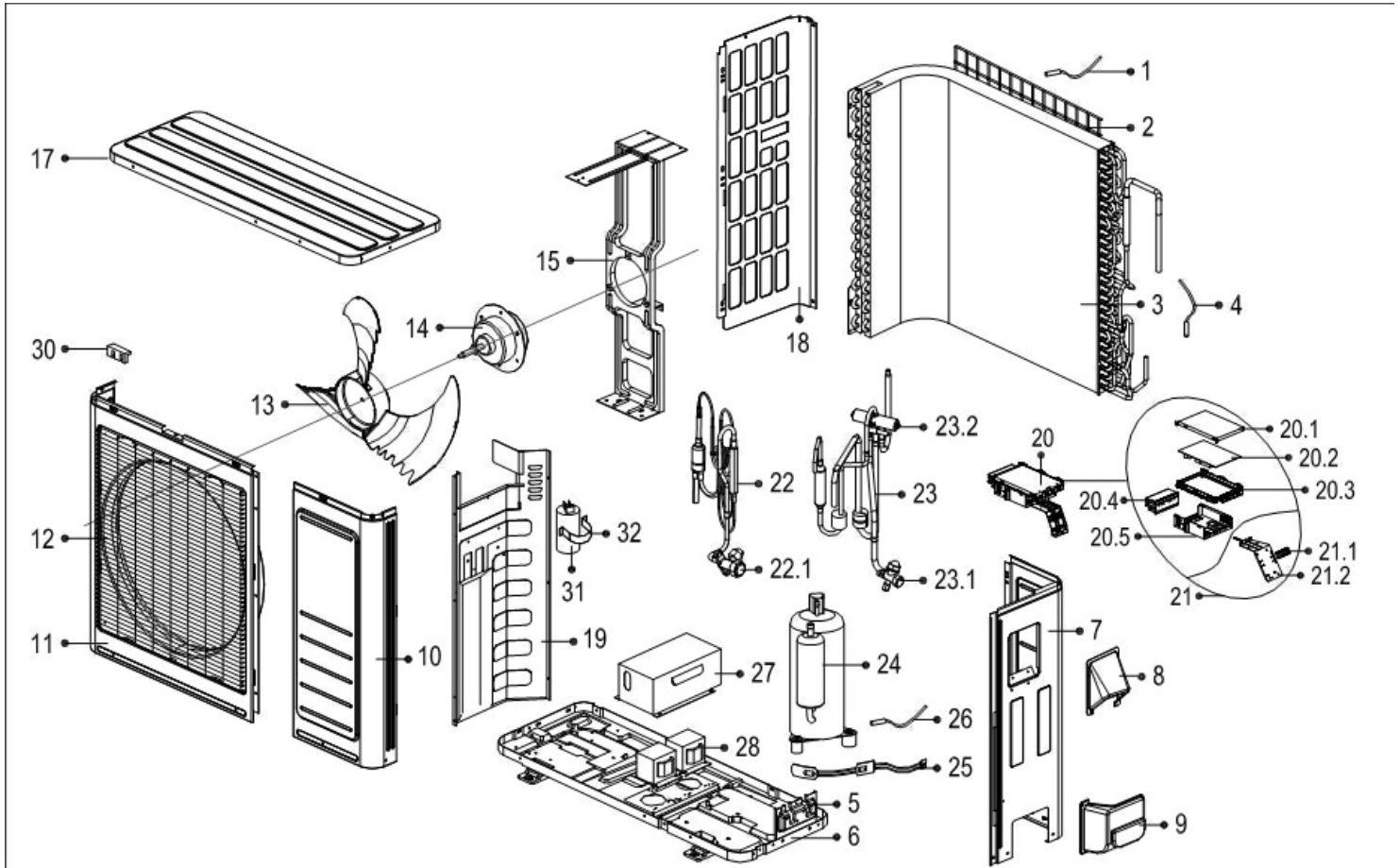


Ref#	Part Number	Description	Qty
1	2011330A4490	Panel assembly	1
2	201131410703	Air freshening filter	1
3	201133091017	Air filter	2
4	203332890279	Display box assembly	1
4.1	#NA	Display board assembly	1
5	#NA	Cover of electrical equipment	1
6	#NA	Screw cap	4
7	201133090938	Panel frame assembly	1
9	#NA	Air outlet assembly	1
10	202400200004	Louver motor	1
11	201101020038	Drain hose	1
12	201102000305	Fix clamp of temperature sensor	1
13	201532990044	Evaporator assembly	1
14	#NA	Fan motor cover	1
15	202400300064	Brushless DC Motor	1
16	202719900606	Bearing base	1
17	2011002G0001	Cross flow fan	1
18	#NA	Chassis assembly	1

Ref#	Part Number	Description	Qty
19	201232800103	Pipe clamp board	1
21	201232990002	Installation plate	1
23	#NA	Electronic control box assembly	1
23.1	#NA	Cover of electronic control box	1
23.2	#NA	Electronic control box	1
23.3	201332990414	Indoor main control board assembly	1
23.4	202301300210	Ambient temperature sensor assembly	1
23.5	202301300077	Pipe temperature sensor assembly	1
23.6	#NA	Wire joint	1
24	240010011	Remote Controller	1
25	202720090001	Seal ring	1
26	201101020011	Drain joint	1
27	201600320003	Pipe nut	1
27	201600320001	Pipe nut	1
28	201133090939	Horizontal louver (above)	1
29	201133090940	Horizontal louver (below)	1
30	201133090167	Fixing board of fan motor	1

Items may be subject to minimum order quantity.
#NA: Contact Factory for availability and lead time.

SZI Series - Active Model 24,000 Btuh 230v Heat Pump **ZHB24D00** Single Zone Condenser

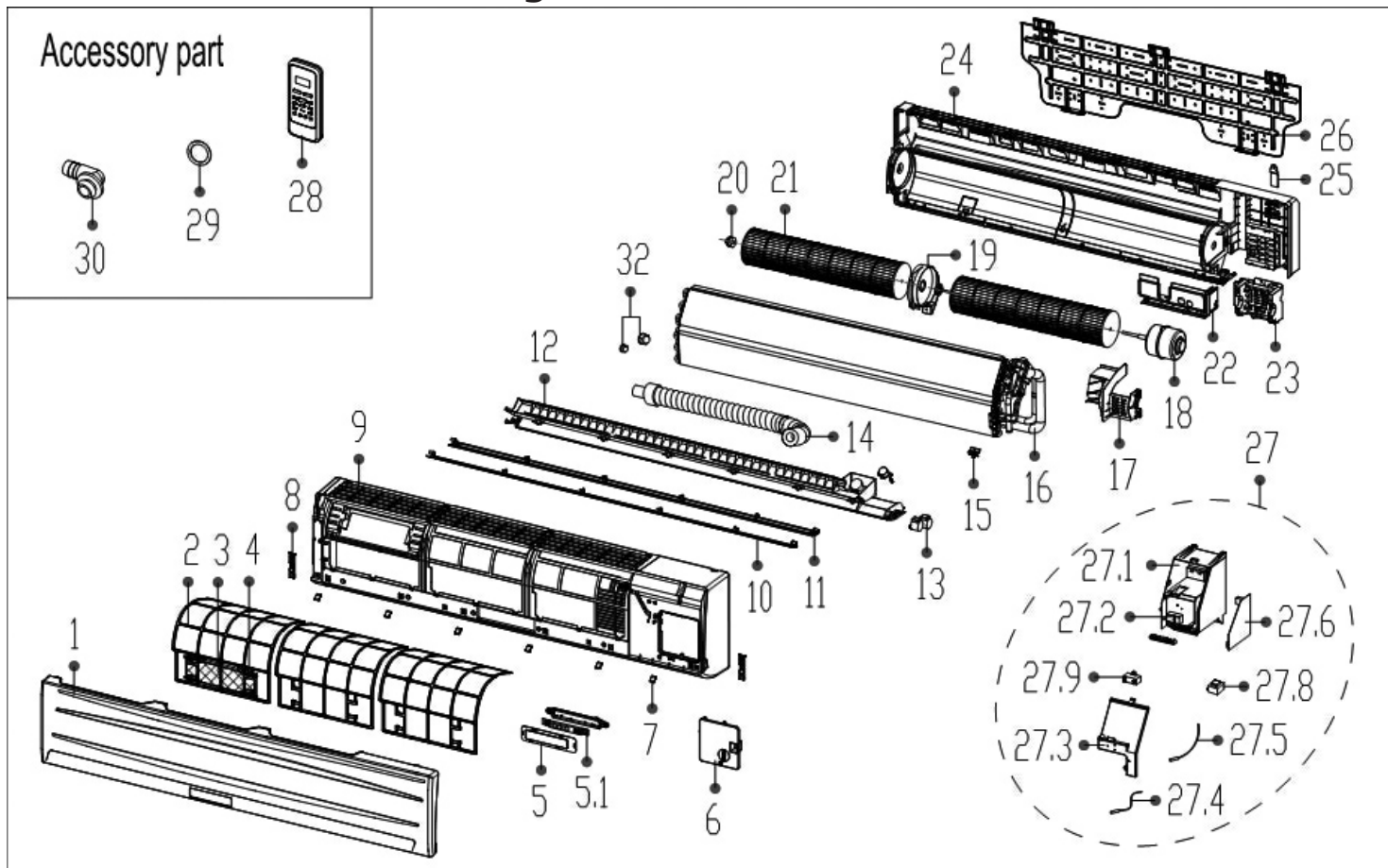


Ref#	Part Number	Description	Qty
1	202301310063	Ambient temperature sensor assembly	1
2	#NA	Rear net	1
3	201537890068	Condenser assembly	1
4	202440500004	Pipe temperature sensor assembly	1
5	#NA	Valve plate	1
6	#NA	Chassis assembly	1
7	#NA	Rear right clapboard assembly	1
8	#NA	Big handle	1
9	#NA	Water collector	1
10	#NA	Front right clapboard assembly	1
11	201248100356	Front panel	1
12	201237890112	Air outlet grille	1
13	201100320622	Axial flow fan	1
14	202400401241	Asynchronous motor	1
15	#NA	Supporter assembly of fan motor	1
17	201248100363	Top cover assembly	1
18	201248100364	Left supporter	1
19	#NA	Partition board assembly	1
20	#NA	Electronic control box assembly	1
20.1	#NA	Cover of electronic control box	1

Ref#	Part Number	Description	Qty
20.2	2013380A0068	Outdoor main control board assembly	1
20.3	#NA	Support of electronic control box	1
20.4	#NA	Radiator	1
20.5	#NA	Electronic installing box	1
21	203337990161	Terminal board assembly	1
21.1	#NA	Wire joint	1
21.2	201237890064	Terminal board	1
22	#NA	Liquid valve assembly	1
22.1	201600740704	Liquid valve	1
23	#NA	4-ways valve assembly	1
23.1	201600720296	Gas valve	1
23.2	201600690011	4-ways valve	1
24	201400600530	Compressor	1
25	202403100501	Crankcase electric heater	1
26	202301310068	Discharge temperature sensor assembly	1
27	#NA	Cover of inductance	1
28	202301010006	Reactor	1
28	202301000819	Reactor	1
30	201135110801	Clamp of front net	8
31	202401000078	Capacitor of compressor	1
32	#NA	Capacitor clip	1

Items may be subject to minimum order quantity.
#NA: Contact Factory for availability and lead time.

SZI Series - Active Model 30,000 Btuh 230v Heat Pump ZWHA30D00 High-Wall Air Handler

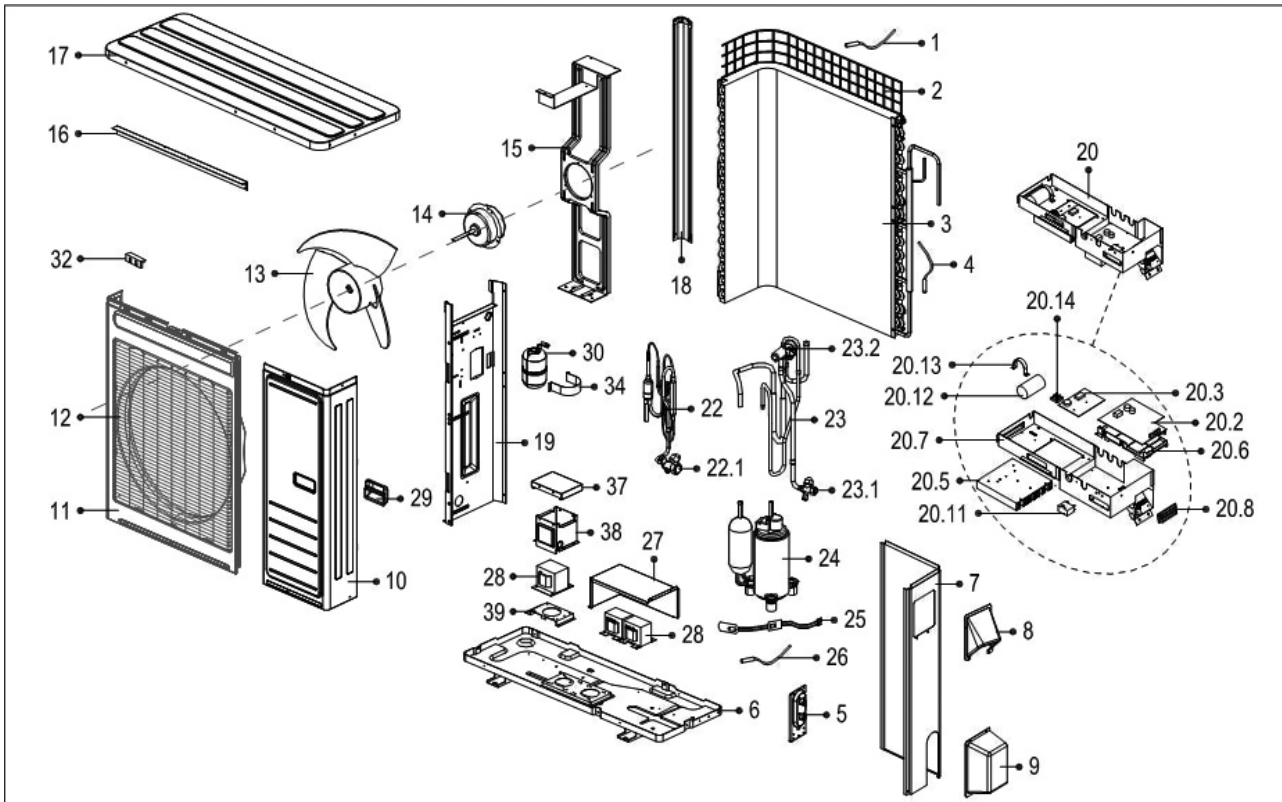


Ref#	Part Number	Description	Qty
1	2011331A0983	Panel assembly	1
2	201133190183	Air filter	3
3	201131410703	Air freshening filter	1
4	201132200713	Bracket of air filter	1
5	203333190104	Display box assembly	1
5.1	#NA	Display board assembly	1
6	#NA	Cover of electrical equipment	1
7	#NA	Screw cap	6
8	201132390476	Mandril of Panel	2
9	201133190195	Panel frame assembly	1
10	201133190192	Horizontal louver (above)	1
11	201133190191	Horizontal louver (below)	1
12	#NA	Air outlet assembly	1
13	202400200137	Louver motor	1
13	202400200136	Louver motor	2
14	201101020038	Drain hose	1
15	201102000305	Fix clamp of temperature sensor	1
16	201533190088	Evaporator assembly	1
17	#NA	Fan motor cover	1
18	202400401186	Asynchronous motor	1
19	201133190190	Fan holder assembly	1

Ref#	Part Number	Description	Qty
20	202733190001	Bearing base	1
20	202719900606	Bearing base	1
21	201100200308	Cross flow fan	1
21	201100200309	Cross flow fan	1
22	201133190187	Front cover of chassis	1
23	201133190186	Base of fan motor	1
24	#NA	Chassis assembly	1
25	201232800103	Pipe clamp board	2
26	201233190005	Installation plate	1
27	#NA	Electronic control box assembly	1
27.1	#NA	Electronic control box	1
27.2	#NA	Wire joint	1
27.3	#NA	Cover of electronic control box	1
27.4	202301300210	Ambient temperature sensor assembly	1
27.5	202301300080	Pipe temperature sensor assembly	1
27.6	201333190137	Indoor main control board assembly	1
27.8	202300900167	Transformer	1
27.9	202401100353	Fan motor capacitor	1
28	240010011	Remote Controller	1
29	202720090001	Seal ring	1
30	201101020011	Drain joint	1
32	201600320003	Pipe Nut	1
32	201600320001	Pipe Nut	1

Items may be subject to minimum order quantity.
#NA: Contact Factory for availability and lead time.

SZI Series - Active Model 30,000 Btuh 230v Heat Pump **ZHA30D00** Single Zone Condenser

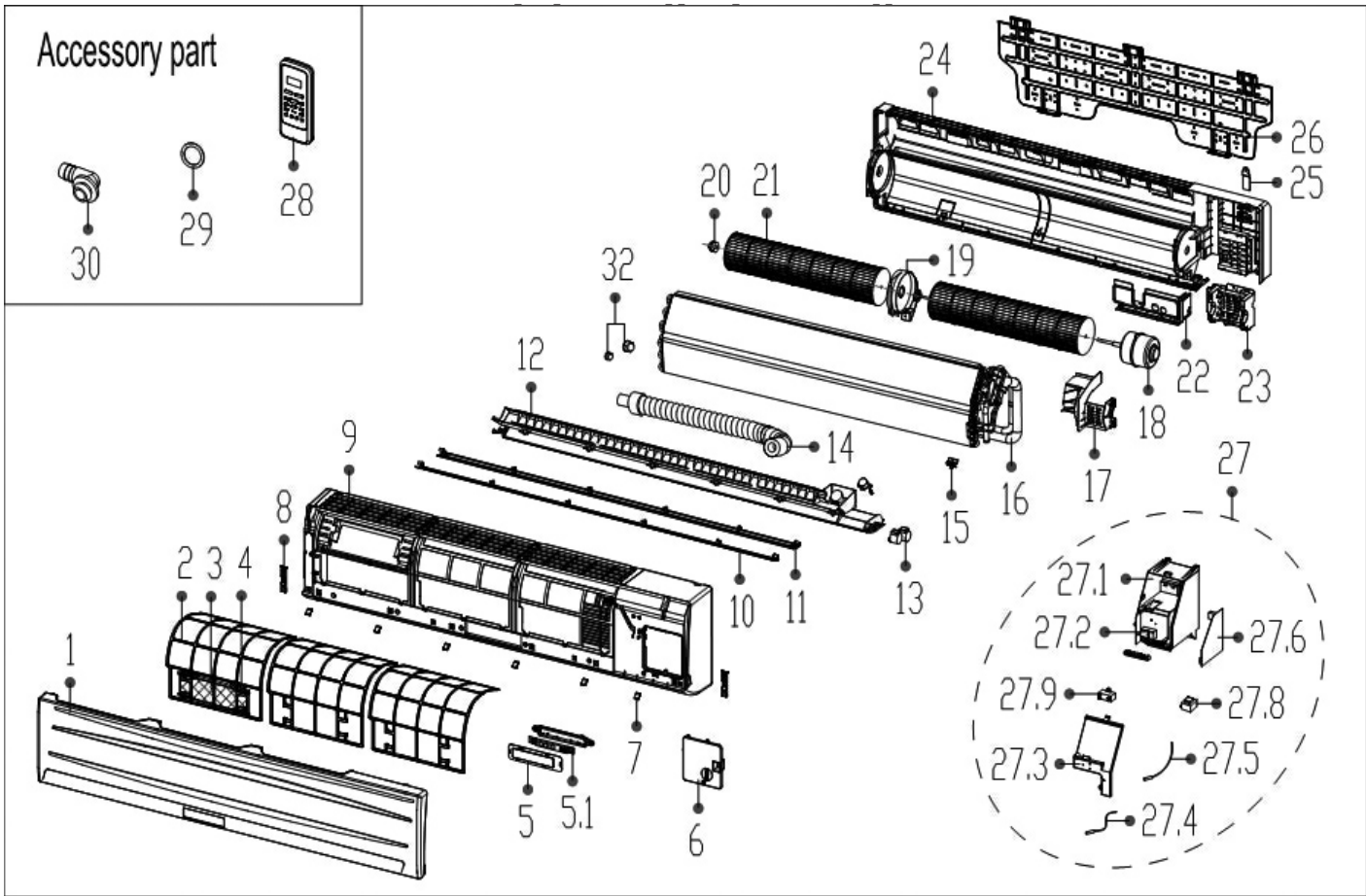


Ref#	Part Number	Description	Qty
1	202301310075	Ambient temperature sensor assembly	1
2	#NA	Rear net	1
3	201538090077	Condenser assembly	1
4	202301300111	Pipe temperature sensor assembly	1
5	#NA	Valve plate	1
6	#NA	Chassis assembly	1
7	#NA	Rear right clapboard assembly	1
8	#NA	Big handle	1
9	#NA	Water collector	1
10	#NA	Front right clapboard assembly	1
11	201248200103	Front panel	1
12	201238090068	Air outlet grille	1
13	201100300042	Axial flow fan	1
14	202400410666	Asynchronous motor	1
15	#NA	Supporter assembly of fan motor	1
16	#NA	Rear supporter	1
17	201248300309	Top cover assembly	1
18	201248400036	Left supporter	1
19	#NA	Partition board assembly	1
20	#NA	Electronic control box assembly	1
20.2	2013381A0019	Outdoor main control board assembly	1
20.3	201338190053	Inverter control board assembly	1
20.5	202301900126	Radiator	1
20.6	#NA	Support of electronic control box	1
20.7	#NA	Electronic installing box	1

Ref#	Part Number	Description	Qty
20.8	#NA	Wire joint	1
20.8	#NA	Wire joint	1
20.11	202401190019	Fan motor capacitor	1
20.12	202401000074	Capacitor of compressor	1
20.13	#NA	Capacitor clip	1
20.14	202300500328	Rectifier bridge	2
22	#NA	Liquid valve assembly	1
22.1	201600740706	Liquid valve	1
23	201638190294	4-ways valve assembly	1
23.1	201600720398	Gas valve	1
23.2	#NA	4-ways valve	1
24	201400601740	Compressor	1
25	202403100503	Crankcase electric heater	1
26	202448200000	Discharge temperature sensor assembly	1
27	#NA	Cover of inductance	1
28	202301000913	Reactor	1
28	202301050027	Reactor	1
28	202301050025	Reactor	1
29	#NA	Handle	2
30	201601000086	Accumulator cylinder	1
32	201135110801	Clamp of front net	8
34	#NA	Fix clamp of segregator	1
37	#NA	Inductance cover	1
38	#NA	Protecting board of inductance	1
39	#NA	Inductance holder	1

Items may be subject to minimum order quantity.
#NA: Contact Factory for availability and lead time.

SZI Series - Active Model 36,000 Btuh 230v Heat Pump ZWHA36D0

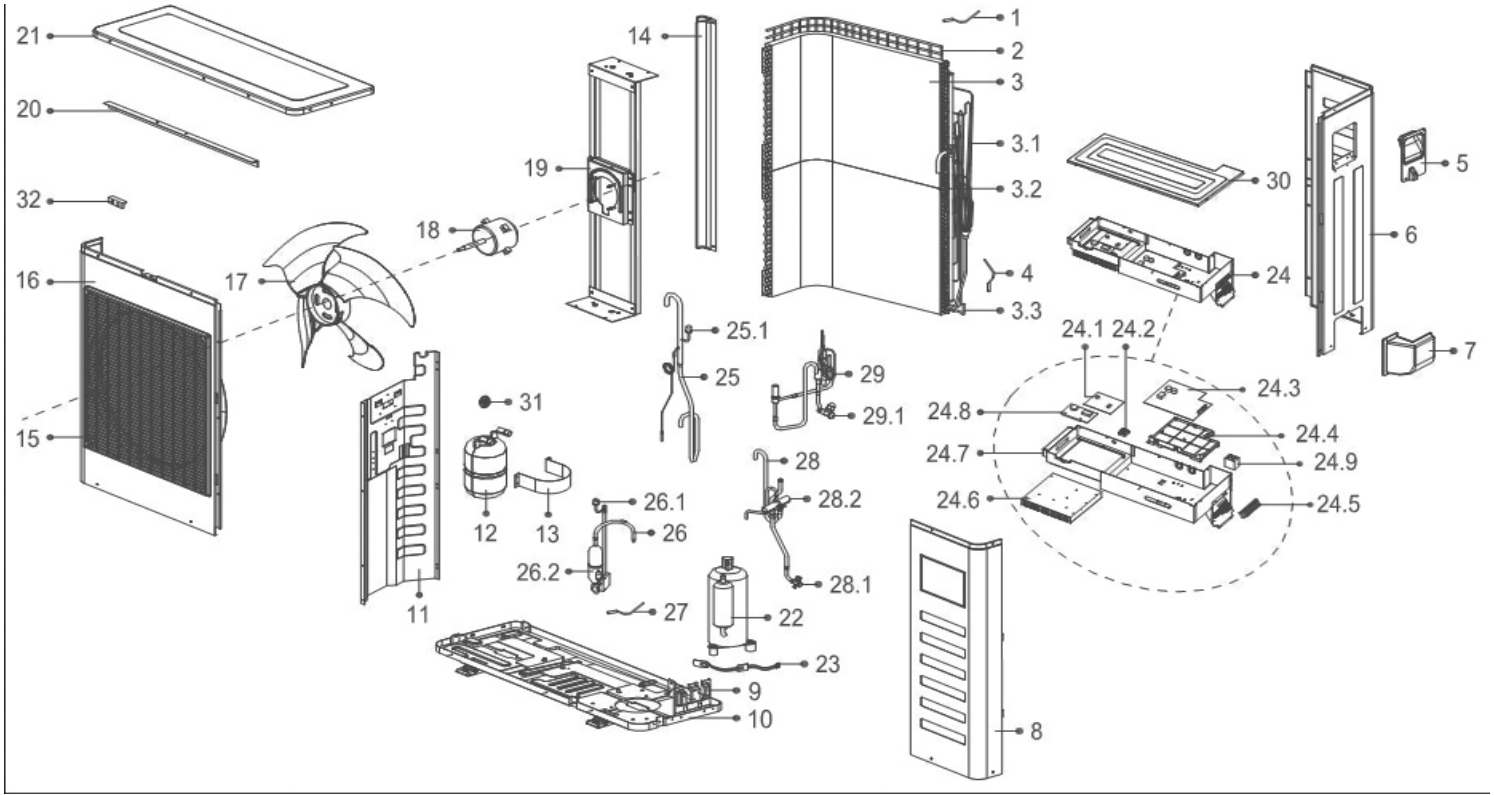


Ref#	Part Number	Description	Qty
1	2011331A0983	Panel assembly	1
2	201133190183	Air filter	3
3	201131410703	Air freshening filter	1
4	201132200713	Bracket of air filter	1
5	203333190104	Display box assembly	1
5.1	#NA	Display board assembly	1
6	#NA	Cover of electrical equipment	1
7	201133190182	Screw cap	6
8	201132390476	Mandril of Panel	2
9	201133190195	Panel frame assembly	1
10	201133190192	Horizontal louver (above)	1
11	201133190191	Horizontal louver (below)	1
12	#NA	Air outlet assembly	1
13	202400200137	Louver motor	1
13	202400200136	Louver motor	2
14	201101020038	Drain hose	1
15	201102000305	Fix clamp of temperature sensor	1
16	201533190088	Evaporator assembly	1
17	#NA	Fan motor cover	1
18	202400401186	Asynchronous motor	1
19	201133190190	Fan holder assembly	1

Ref#	Part Number	Description	Qty
20	202733190001	Bearing base	1
20	202719900606	Bearing base	1
21	201100200308	Cross flow fan	1
21	201100200309	Cross flow fan	1
22	201133190187	Front cover of chassis	1
23	201133190186	Base of fan motor	1
24	201133190208	Chassis assembly	1
25	201232800103	Pipe clamp board	2
26	201233190005	Installation plate	1
27	#NA	Electronic control box assembly	1
27.1	#NA	Electronic control box	1
27.2	#NA	Wire joint	1
27.3	201133190184	Cover of electronic control box	1
27.4	202301300210	Ambient temperature sensor assembly	1
27.5	202301300080	Pipe temperature sensor assembly	1
27.6	201333190136	Indoor main control board assembly	1
27.8	202300900167	Transformer	1
27.9	202401100353	Fan motor capacitor	1
28	240010011	Remote Controller	1
29	202720090001	Seal ring	1
30	201101020011	Drain joint	1
32	201600320003	Pipe Nut	1
32	201600320001	Pipe Nut	1

Items may be subject to minimum order quantity.
#NA: Contact Factory for availability and lead time.

SZI Series - Active Model 36,000 Btuh 230v Heat Pump **ZHA36D00** Single Zone Condenser

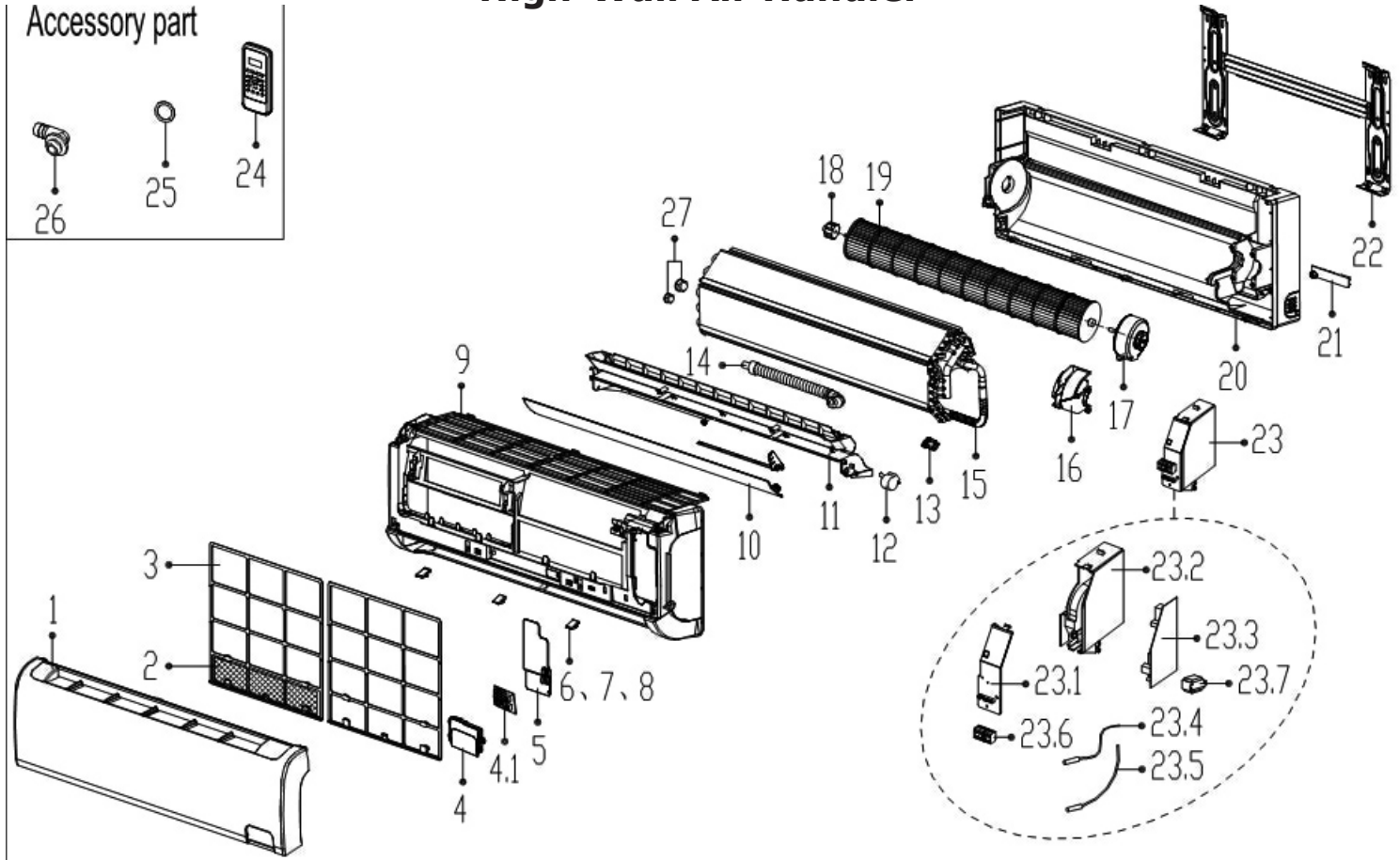


Ref#	Part Number	Description	Qty
1	202301310075	Ambient temperature sensor assembly	1
2	#NA	Rear net	1
3	201538190031	Condenser assembly	1
3.1	#NA	Condenser	1
3.2	#NA	Input pipe assembly	1
3.3	#NA	Output pipe	1
4	202301300111	Pipe temperature sensor assembly	1
5	#NA	Big handle	1
6	#NA	Rear right clapboard assembly	1
7	#NA	Water collector	1
8	#NA	Front right clapboard assembly	1
9	#NA	Valve plate	1
10	#NA	Chassis assembly	1
11	#NA	Partition board assembly	1
12	201601000074	Gas-liquid separator	1
13	201245000901	Fix clamp of segregator	1
14	201248700262	Left supporter	1
15	201248700055	Air outlet grille	1
16	201248700072	Front panel	1
17	201100300145	Axial flow fan	1
18	202400400956	Asynchronous motor	1
19	#NA	Supporter assembly of fan motor	1
20	201275590143	Rear net frame	1
21	201257190096	Top cover assembly	1

Ref#	Part Number	Description	Qty
22	201401500220	Compressor	1
23	202403101715	Crankcase electric heater	1
24	#NA	Electronic control box assembly	1
24.1	201357290001	Inverter control board assembly	1
24.2	202300500328	Rectifier bridge	1
24.3	2013381A0025	Outdoor main control board assembly	1
24.4	#NA	Support of electronic control plate	1
24.5	#NA	Wire joint	1
24.6	#NA	Radiator	1
24.7	#NA	Electronic installing box assembly	1
24.8	201319901145	Active PFC Module Subassembly	1
24.9	202401190046	Fan motor capacitor	1
25	#NA	Suction pipe assembly	1
25.1	202301820021	Pressure switch	1
26	#NA	Discharge pipe assembly	1
26.1	202301820020	Pressure switch	1
26.2	201601100168	Oil separator	1
27	202448200000	Discharge temperature controller	1
28	#NA	4-ways valve assembly	1
28.1	201600770802	Gas valve	1
28.2	201600600124	4-ways valve	1
29	#NA	liquid valve assembly	1
29.1	201600740704	Liquid valve	1
30	#NA	Cover of electronic control box	1
31	202301000523	PFC Inductor	1
32	201135110801	Clamp of front net	10

Items may be subject to minimum order quantity.
#NA: Contact Factory for availability and lead time.

SZI Series - Inactive Model 9,000 Btuh 230v Heat Pump **ZWHA09D0** High-Wall Air Handler

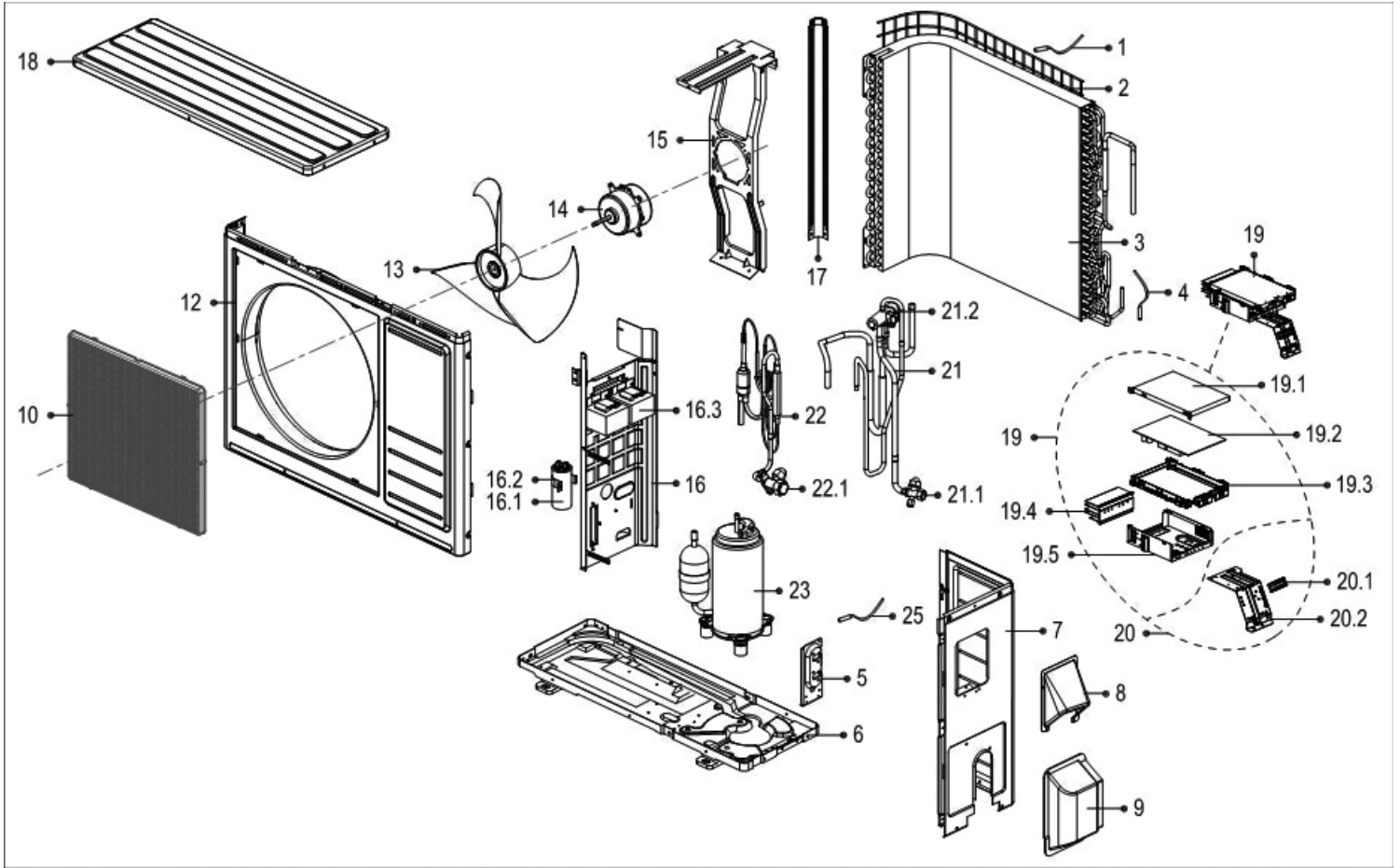


Ref#	Part Number	Description	Qty
1	2011325A4559	Panel assembly	1
2	201131410703	Air freshening filter	1
3	201132591022	Air filter	2
4	203332390661	Display box assembly	1
4.1	#N/A	Display board assembly	1
5	#N/A	Cover of electrical equipment	1
6	#N/A	Screw cap (left)	1
7	#N/A	Screw cap (middle)	1
8	#N/A	Screw cap (right)	1
9	201132590918	Panel frame assembly	1
10	201132590920	Horizontal louver	1
11	#N/A	Air outlet assembly	1
12	202400200006	Louver motor	1
13	201102000305	Fix clamp of temperature sensor	1
14	201101020038	Drain hose	1
15	201532590469	Evaporator assembly	1
16	#N/A	Fan motor cover	1
17	202400300137	Asynchronous motor	1

Ref#	Part Number	Description	Qty
18	202719900606	Bearing base	1
19	201100200039	Cross flow fan	1
20	#N/A	Chassis assembly	1
21	201130100204	Pipe clamp board	1
22	#N/A	Installation plate	1
23	#N/A	Electronic control box assembly	1
23.1	#N/A	Cover of electronic control box	1
23.2	#N/A	Electronic control box	1
23.3	201332391427	Indoor main control board assembly	1
23.4	202433190000	Ambient temperature sensor assembly	1
23.5	202301300080	Pipe temperature sensor assembly	1
23.6	#N/A	Wire joint	1
23.7	202300900095	Transformer	1
24	240010011	Remote Controller	1
25	202720090001	Seal ring	1
26	201101020011	Drain joint	1
27	201600330002	Pipe nut	1
27	201600330001	Pipe nut	1

Items may be subject to minimum order quantity.
#NA: Contact Factory for availability and lead time.

SZI Series - Inactive Model 9,000 Btuh 230v Heat Pump **ZHA09D00** Single Zone Condenser

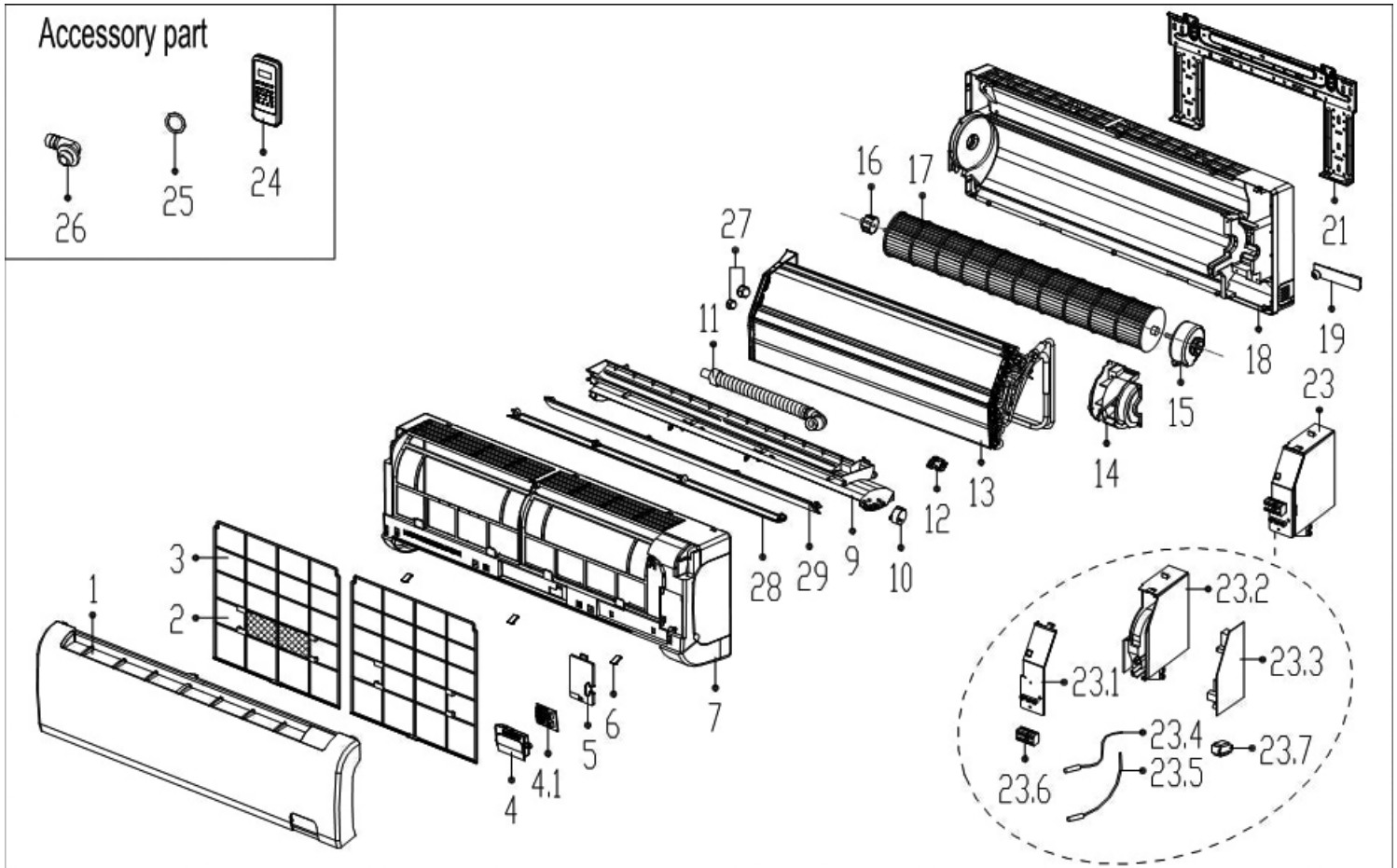


Ref#	Part Number	Description	Qty
1	202440220061	Ambient temperature sensor assembly	1
2	#N/A	Rear net	1
3	201537390033	Condenser assembly	1
4	202440500004	Pipe temperature sensor assembly	1
5	#N/A	Valve plate	1
6	#N/A	Chassis assembly	1
7	#N/A	Right clapboard assembly	1
8	#N/A	Big handle	1
9	201137400000	Water collector	1
10	201137590017	Air outlet grille	1
12	201237400392	Front panel	1
13	201100320625	Axial flow fan	1
14	202400401345	Asynchronous motor	1
15	#N/A	Supporter assembly of fan motor	1
16	#N/A	Partition board assembly	1
16.1	202401000612	Capacitor of compressor	1

Ref#	Part Number	Description	Qty
16.2	#N/A	Capacitor clip	1
16.3	202301000820	Reactor	1
16.3	202301000819	Reactor	1
17	201237400400	Left supporter	1
18	201237900028	Top cover assembly	1
19	203337390153	Electronic control box assembly	1
20	203337590049	Terminal board assembly	1
20.1	#N/A	Wire joint	1
20.2	201237590046	Terminal board	1
21	#N/A	4-Ways valve assembly	1
21.1	201600720095	Gas valve	1
21.2	201600600521	4-Ways valve	1
22	#N/A	Liquid valve assembly	1
22.1	201600740523	Liquid valve	1
23	201400620600	Compressor	1
25	202301310068	Discharge temperature sensor assembly	1
N/S	2013199A0105	Low ambient kit	1
N/S	202301300079	Pipe temperature sensor assembly	1

Items may be subject to minimum order quantity.
#NA: Contact Factory for availability and lead time.

SZI Series - Inactive Model 12,000 Btuh 230v Heat Pump **ZWHA12D0** High-Wall Air Handler

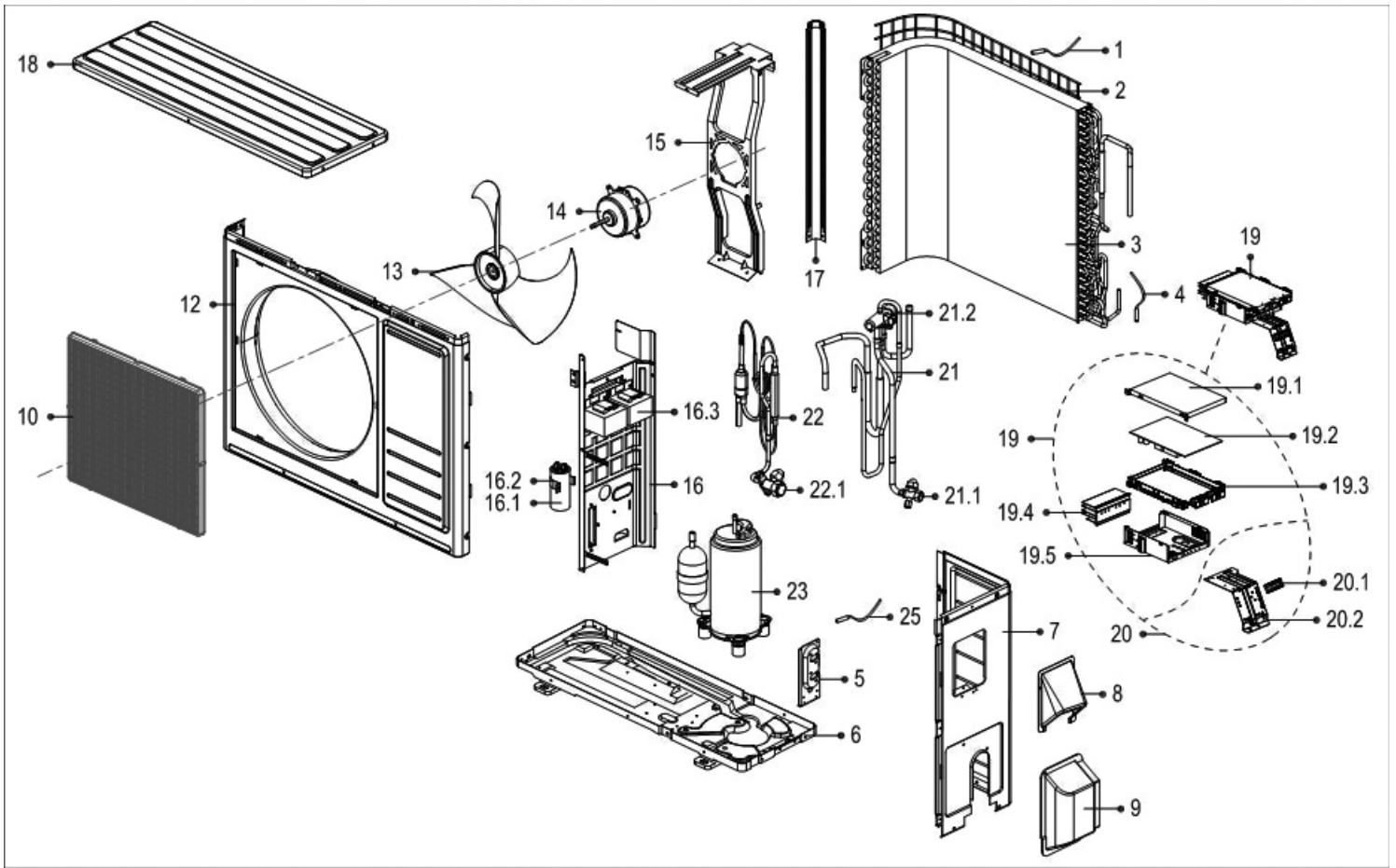


Ref#	Part Number	Description	Qty
1	2011328A2134	Panel assembly	1
2	201131410703	Air freshening filter	1
3	201132890704	Air filter	2
4	203332890292	Display box assembly	1
4.1	#N/A	Display board assembly	1
5	#N/A	Cover of electrical equipment	1
6	#N/A	Screw cap	3
7	201132890616	Panel frame assembly	1
9	#N/A	Air outlet assembly	1
10	202400200120	Louver motor	1
11	201101020038	Drain hose	1
12	201102000305	Fix clamp of temperature sensor	1
13	201532790059	Evaporator assembly	1
14	#N/A	Fan motor cover	1
15	202400300419	Asynchronous motor	1
16	202719900606	Bearing base	1
17	201100200014	Cross flow fan	1

Ref#	Part Number	Description	Qty
18	#N/A	Chassis assembly	1
19	201232800103	Pipe clamp board	1
21	201232790012	Installation plate	1
23	#N/A	Electronic control box assembly	1
23.1	#N/A	Cover of electronic control box	1
23.2	#N/A	Electronic control box	1
23.3	201332591192	Indoor main control board assembly	1
23.4	202433190000	Ambient temperature sensor assembly	1
23.5	202301300080	Pipe temperature sensor assembly	1
23.6	#N/A	Wire joint	1
24	240010011	Remote Controller	1
25	202720090001	Seal ring	1
26	201101020011	Drain joint	1
27	201600330001	Pipe nut	1
27	201600330003	Pipe nut	1
28	201132890617	Horizontal louver (above)	1
29	201132890618	Horizontal louver (below)	1

Items may be subject to minimum order quantity.
#NA: Contact Factory for availability and lead time.

SZI Series - *Inactive Model* 12,000 Btuh 230v Heat Pump **ZHA12D00** Single Zone Condenser

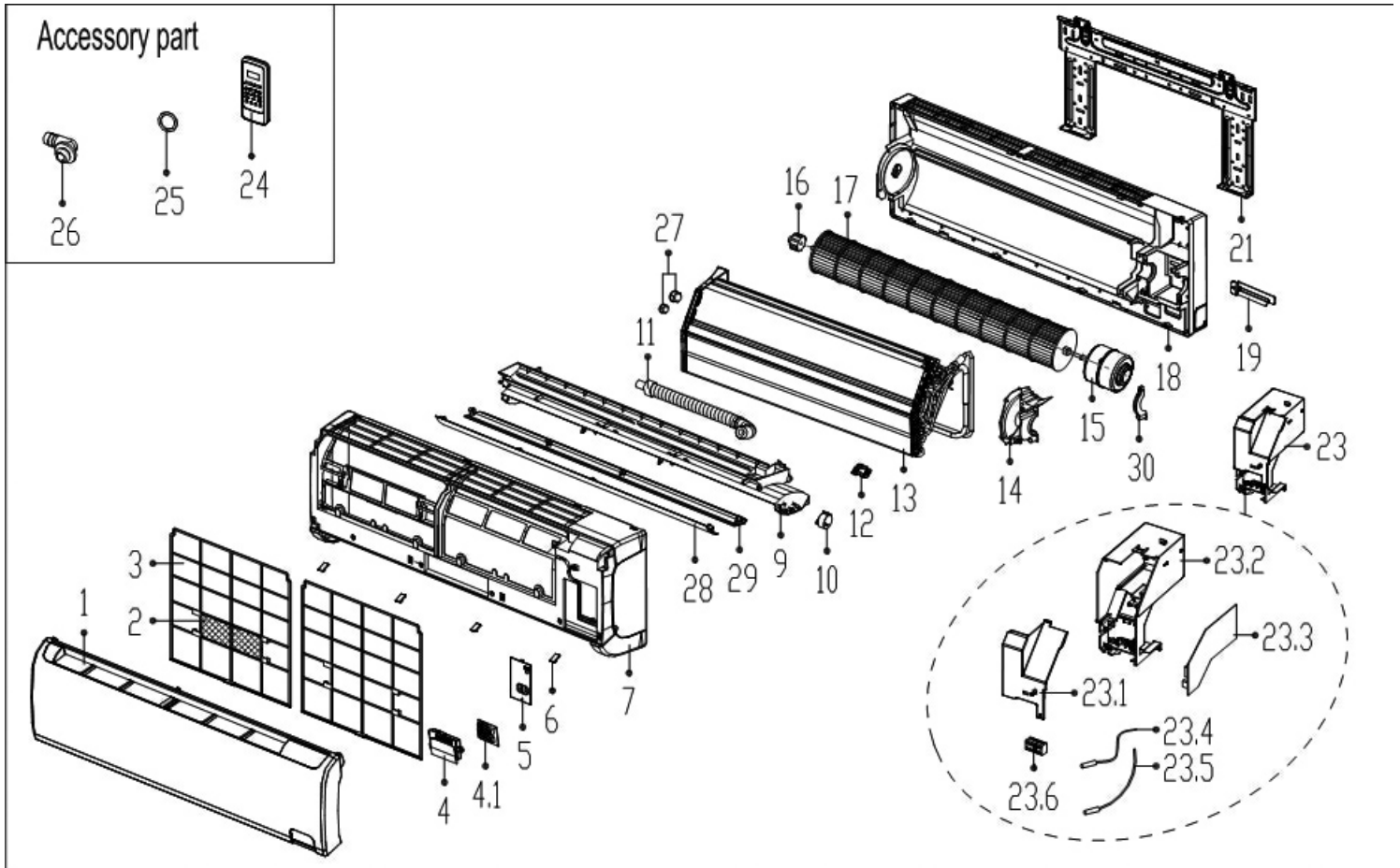


Ref#	Part Number	Description	Qty
1	202440220061	Ambient temperature sensor assembly	1
2	#N/A	Rear net	1
3	201537390033	Condenser assembly	1
4	202440500004	Pipe temperature sensor assembly	1
5	#N/A	Valve plate	1
6	#N/A	Chassis assembly	1
7	#N/A	Right clapboard assembly	1
8	#N/A	Big handle	1
9	#N/A	Water collector	1
10	201137590017	Air outlet grille	1
12	201237400392	Front panel	1
13	201100320625	Axial flow fan	1
14	202400401345	Asynchronous motor	1
15	#N/A	Supporter assembly of fan motor	1
16	#N/A	Partition board assembly	1
16.1	202401000612	Capacitor of compressor	1
16.2	#N/A	Capacitor clip	1
16.3	202301000820	Reactor	1

Ref#	Part Number	Description	Qty
16.3	202301000819	Reactor	1
17	201237400400	Left supporter	1
18	201237900028	Top cover assembly	1
19	#N/A	Electronic control box assembly	1
19.1	#N/A	Cover of electronic control box	1
19.2	201337390084	Outdoor main control board assembly	1
19.3	#N/A	Support of electronic control box	1
19.4	#N/A	Radiator	1
19.5	#N/A	Electronic installing box	1
20	#N/A	Terminal board assembly	1
20.1	#N/A	Wire joint	1
20.2	201237590046	Terminal board	1
21	#N/A	4-Ways valve assembly	1
21.1	201600720195	Gas valve	1
21.2	201600600521	4-Ways valve	1
22	#N/A	Liquid valve assembly	1
22.1	201600740523	Liquid valve	1
23	201400620600	Compressor	1
25	202301310068	Discharge temperature sensor assembly	1
N/S	2013199A0105	Low ambient kit	1
N/S	202301300079	Pipe temperature sensor assembly	1

Items may be subject to minimum order quantity.
#NA: Contact Factory for availability and lead time.

SZI Series - Inactive Model 18,000 Btuh 230v Heat Pump **ZWHA18D0** High-Wall Air Handler

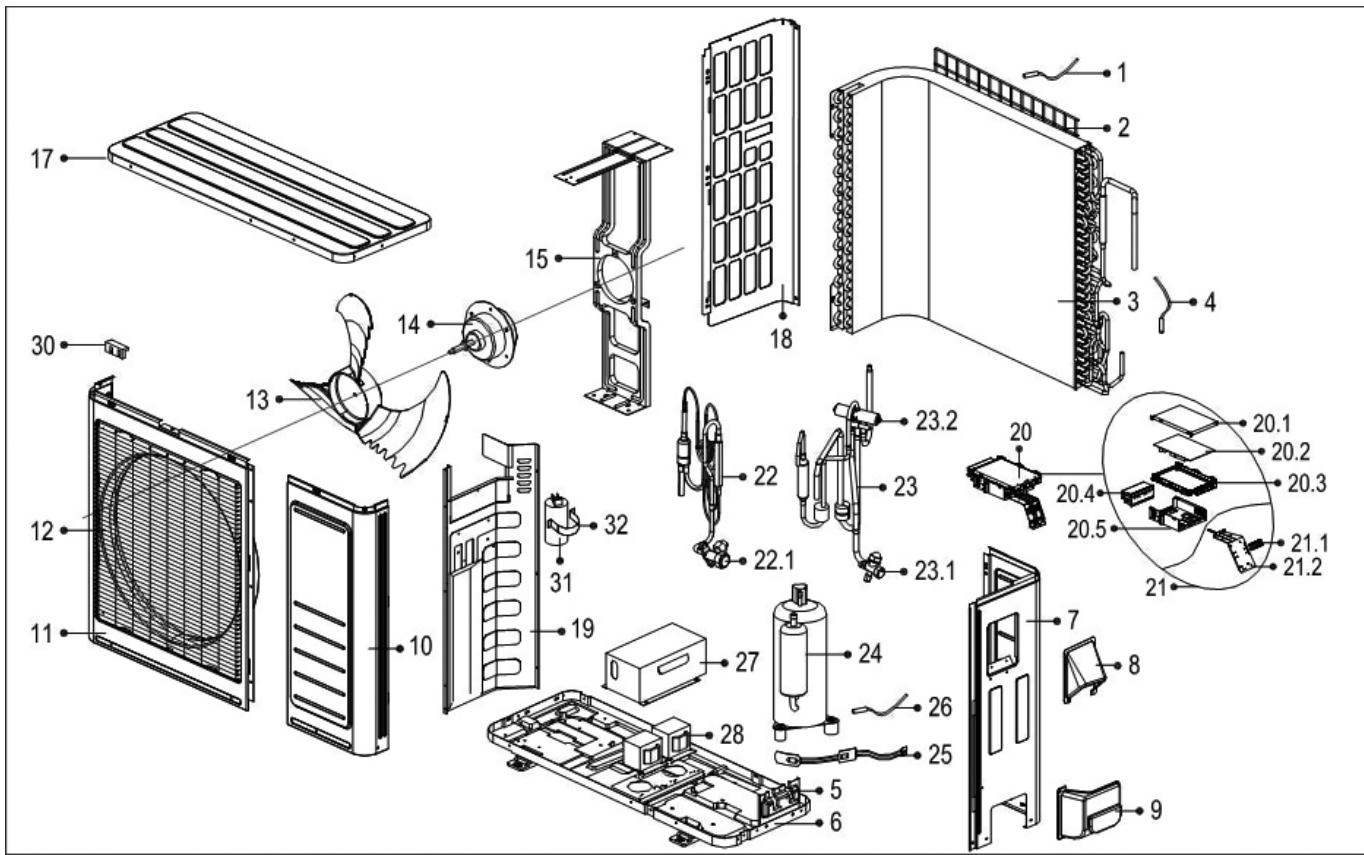


Ref#	Part Number	Description	Qty
1	2011330A4490	Panel assembly	1
2	201131410703	Air freshening filter	1
3	201133091017	Air filter	2
4	203332890292	Display box assembly	1
4.1	#/N/A	Display board assembly	1
5	#/N/A	Cover of electrical equipment	1
6	#/N/A	Screw cap	4
7	201133090938	Panel frame assembly	1
9	#/N/A	Air outlet assembly	1
10	202400200004	Louver motor	1
11	201101020038	Drain hose	1
12	201102000305	Fix clamp of temperature sensor	1
13	201532990044	Evaporator assembly	1
14	#/N/A	Fan motor cover	1
15	202400400931	Asynchronous motor	1
16	202719900606	Bearing base	1
17	2011002G0001	Cross flow fan	1
18	#/N/A	Chassis assy	1

Ref#	Part Number	Description	Qty
19	201232800103	Pipe clamp board	1
21	201232990002	Installation plate	1
23	#/N/A	Electronic control box assembly	1
23.1	#/N/A	Cover of electronic control box	1
23.2	#/N/A	Electronic control box	1
23.3	201332890803	Indoor main control board assembly	1
23.4	202301300210	Ambient temperature sensor assembly	1
23.5	202301300077	Pipe temperature sensor assembly	1
23.6	#/N/A	Wire joint	1
24	240010011	Remote Controller	1
25	202720090001	Seal ring	1
26	201101020011	Drain joint	1
27	201600330002	Pipe nut	1
27	201600330004	Pipe nut	1
28	201133090939	Horizontal louver (above)	1
29	201133090940	Horizontal louver (below)	1
30	201133090167	Fixing board of fan motor	1

Items may be subject to minimum order quantity.
#/NA: Contact Factory for availability and lead time.

SZI Series - *Inactive Model* 18,000 Btuh 230v Heat Pump **ZHA18D00** Single Zone Condenser

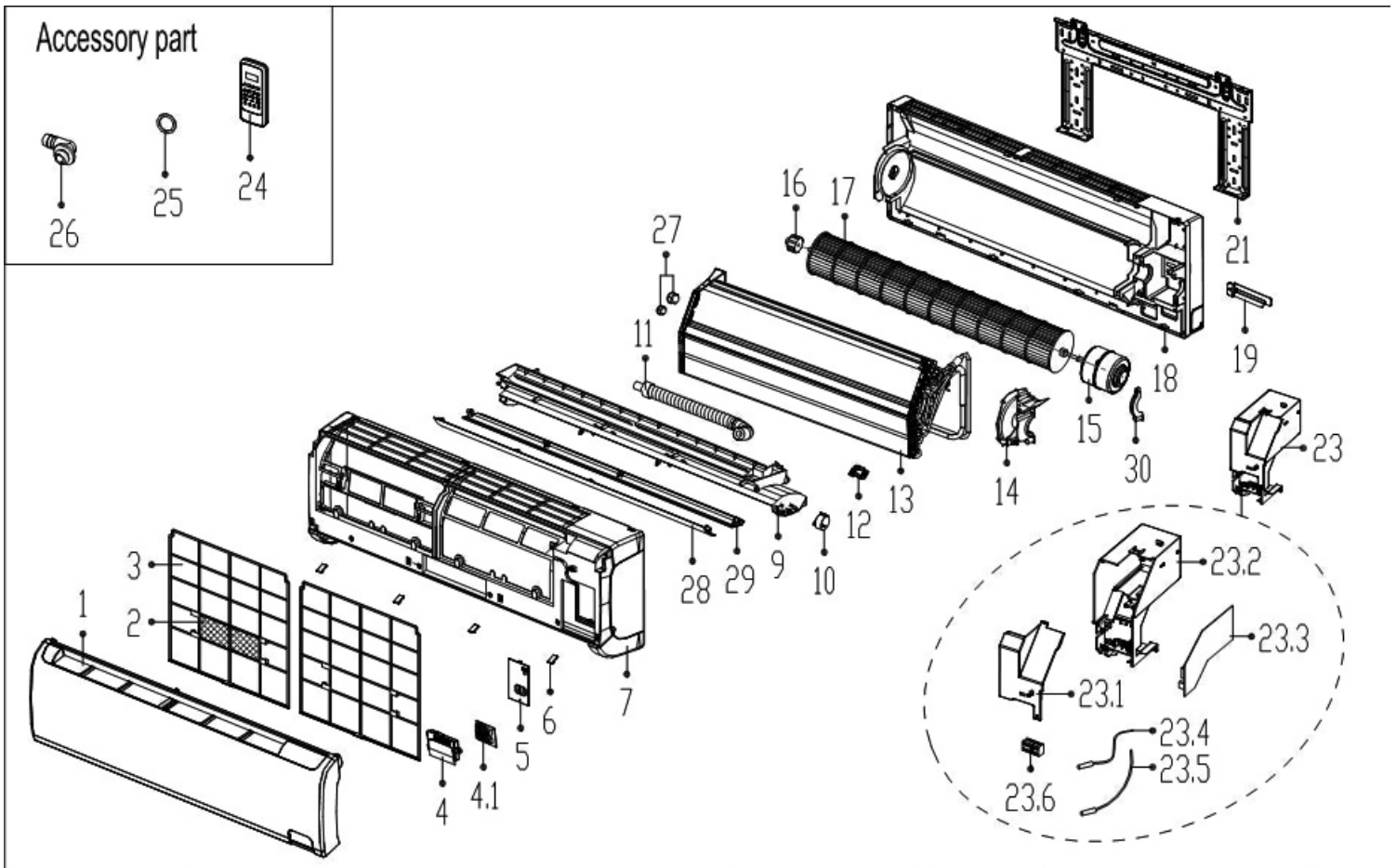


Ref#	Part Number	Description	Qty
1	202301310075	Ambient temperature sensor assembly	1
2	#N/A	Rear net	1
3	201537990036	Condenser assembly	1
4	202440500004	Pipe temperature sensor assembly	1
5	#N/A	Valve plate	1
6	#N/A	Chassis assembly	1
7	#N/A	Rear right clapboard assembly	1
8	#N/A	Big handle	1
9	#N/A	Water collector	1
10	#N/A	Front right clapboard assembly	1
11	201248100356	Front panel	1
12	201237890112	Air outlet grille	1
13	201145500002	Axial flow fan	1
14	202400400173	Asynchronous motor	1
15	#N/A	Supporter assembly of fan motor	1
17	201248100363	Top cover assembly	1
18	201248100364	Left supporter	1
19	#N/A	Partition board assembly	1
20	#N/A	Electronic control box assembly	1
20.1	#N/A	Cover of electronic control box	1

Ref#	Part Number	Description	Qty
20.2	201338090082	Outdoor main control board assembly	1
20.3	#N/A	Support of electronic control box	1
20.4	202301900112	Radiator	1
20.5	#N/A	Electronic installing box	1
21	#N/A	Terminal board assembly	1
21.1	#N/A	Wire joint	1
21.2	201237890064	Terminal board	1
22	#N/A	Liquid valve assembly	1
22.1	201600740704	Liquid valve	1
23	#N/A	4-ways valve assembly	1
23.1	201600720296	Gas valve	1
23.2	201600690011	4-ways valve	1
24	201400600530	Compressor	1
25	202403100501	Crankcase electric heater	1
26	202301310068	Discharge temperature sensor assembly	1
27	#N/A	Cover of inductance	1
28	202301000819	Reactor	1
28	202301050026	Reactor	1
30	201135110801	Clamp of front net	8
31	202401000078	Capacitor of compressor	1
32	#N/A	Capacitor clip	1
N/S	2013199A0105	Low ambient kit	1
N/S	202301300079	Pipe temperature sensor assembly	1

Items may be subject to minimum order quantity.
#NA: Contact Factory for availability and lead time.

SZI Series - Inactive Model 24,000 Btuh 230v Heat Pump **ZWHA24D0** High-Wall Air Handler

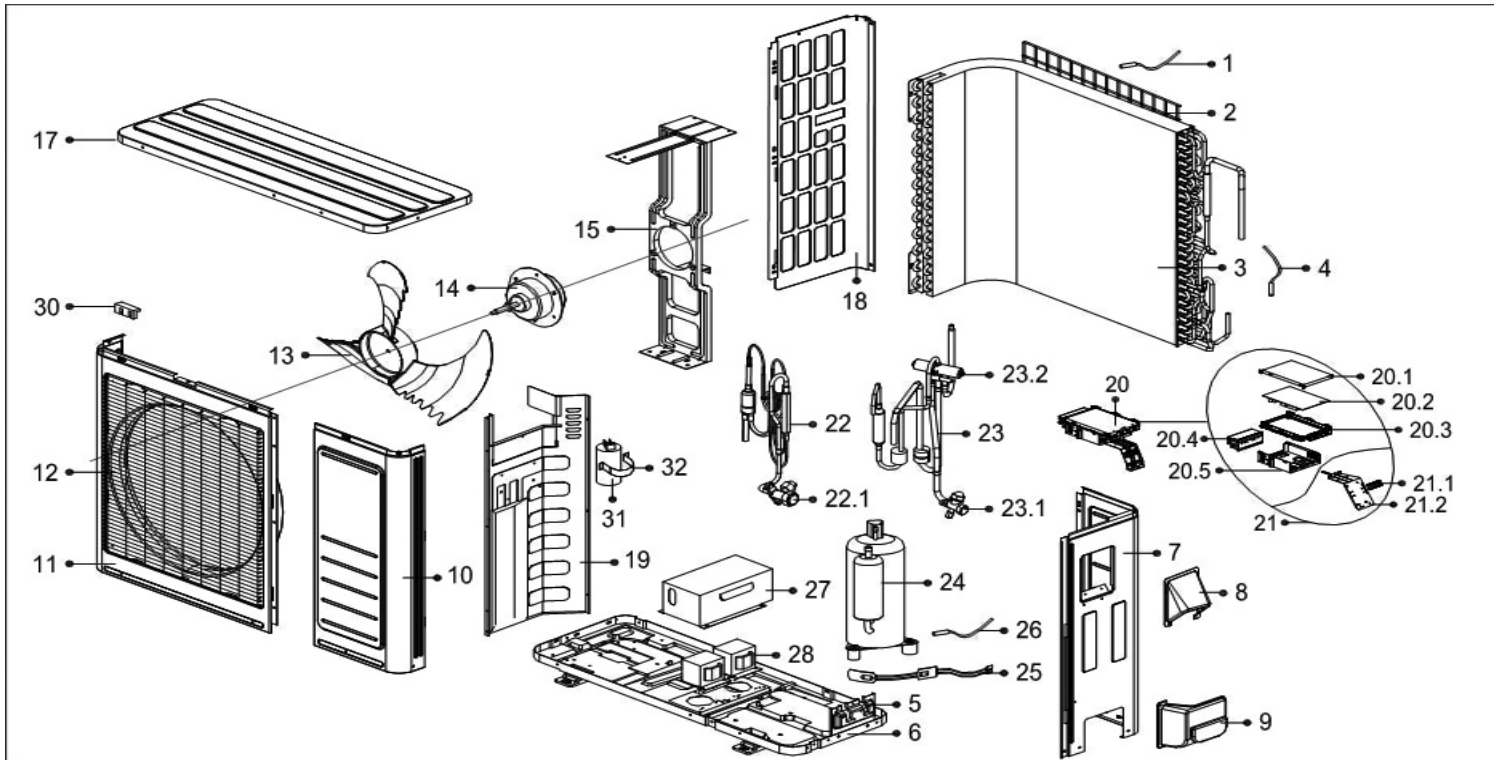


Ref#	Part Number	Description	Qty
1	2011330A4490	Panel assembly	1
2	201131410703	Air freshening filter	1
3	201133091017	Air filter	2
4	203332890292	Display box assembly	1
4.1	#N/A	Display board assembly	1
5	#N/A	Cover of electrical equipment	1
6	#N/A	Screw cap	4
7	201133090938	Panel frame assembly	1
9	#N/A	Air outlet assembly	1
10	202400200004	Louver motor	1
11	201101020038	Drain hose	1
12	201102000305	Fix clamp of temperature sensor	1
13	201532990044	Evaporator assembly	1
14	#N/A	Fan motor cover	1
15	202400400931	Asynchronous motor	1
16	202719900606	Bearing base	1
17	2011002G0001	Cross flow fan	1

Ref#	Part Number	Description	Qty
18	#N/A	Chassis assembly	1
19	201232800103	Pipe clamp board	1
21	#N/A	Installation plate	1
23	#N/A	Electronic control box assembly	1
23.1	#N/A	Cover of electronic control box	1
23.2	#N/A	Electronic control box	1
23.3	201333090856	Indoor main control board assembly	1
23.4	202301300210	Ambient temperature sensor assembly	1
23.5	202301300077	Pipe temperature sensor assembly	1
23.6	#N/A	Wire joint	1
24	240010011	Remote Controller	1
25	202720090001	Seal ring	1
26	201101020011	Drain joint	1
27	201600330002	Pipe nut	1
27	201600330004	Pipe nut	1
28	201133090939	Horizontal louver (above)	1
29	201133090940	Horizontal louver (below)	1
30	201133090167	Fixing board of fan motor	1

Items may be subject to minimum order quantity.
#NA: Contact Factory for availability and lead time.

SZI Series - Inactive Model 24,000 Btuh 230v Heat Pump **ZHA24D00** Single Zone Condenser



Ref#	Part Number	Description	Qty
1	202301310063	Ambient temperature sensor assembly	1
2	#N/A	Rear net	1
3	201537890068	Condenser assembly	1
4	202440500004	Pipe temperature sensor assembly	1
5	#N/A	Valve plate	1
6	#N/A	Chassis assembly	1
7	#N/A	Rear right clapboard assembly	1
8	#N/A	Big handle	1
9	#N/A	Water collector	1
10	#N/A	Front right clapboard assembly	1
11	201248100356	Front panel	1
12	201237890112	Air outlet grille	1
13	201100320622	Axial flow fan	1
14	202400401241	Asynchronous motor	1
15	#N/A	Supporter assembly of fan motor	1
17	201248100363	Top cover assembly	1
18	201248100364	Left supporter	1
19	#N/A	Partition board assembly	1
20	#N/A	Electronic control box assembly	1
20.1	#N/A	Cover of electronic control box	1
20.2	201338090082	Outdoor main control board assembly	1

Ref#	Part Number	Description	Qty
20.3	#N/A	Support of electronic control box	1
20.4	#N/A	Radiator	1
20.5	#N/A	Electronic installing box	1
21	#N/A	Terminal board assembly	1
21.1	#N/A	Wire joint	1
21.2	201237890064	Terminal board	1
22	#N/A	Liquid valve assembly	1
22.1	201600740704	Liquid valve	1
23	#N/A	4-ways valve assembly	1
23.1	201600720296	Gas valve	1
23.2	201600690011	4-ways valve	1
24	201400600530	Compressor	1
25	202403100501	Crankcase electric heater	1
26	202301310068	Discharge temperature sensor assembly	1
27	#N/A	Cover of inductance	1
28	202301010006	Reactor	1
28	202301000819	Reactor	1
30	201135110801	Clamp of front net	1
31	202401000078	Capacitor of compressor	1
32	#N/A	Capacitor clip	1
N/S	2013199A0105	Low ambient kit	1
N/S	202301300079	Pipe temperature sensor assembly	1

Items may be subject to minimum order quantity.
#NA: Contact Factory for availability and lead time.



ECR International, Inc.
2201 Dwyer Avenue • Utica, New York 13501
Phone: 800.325.5279 • Web: enviromaster.com