

 **EMI** Presents
ENVIROair

Single and Multi-Zone Ductless Inverter Split Systems

MZI Series

Replacement Parts Manual

Air Handler (Indoor) Models:

MWHA

Condenser (Outdoor) Models:

MHA/B

Ordering Instructions

Order Parts through your nearest supplier.

When ordering parts, obtain Model Number and Serial Number from data plate on your unit.

Include following information when ordering.

Part Number _____

Part Description _____

Air Handler Model Number _____

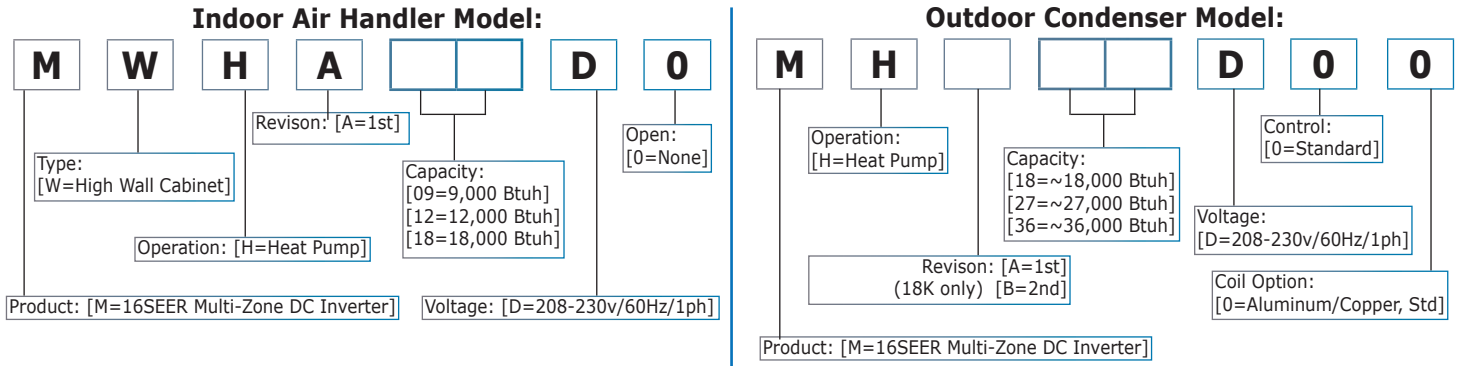
Air Handler Serial Number _____

Condenser Model Number _____

Condenser Serial Number _____



MZI Series Model Decoding



Information and specifications outlined in this manual in effect at the time of printing of this manual. ECR International reserves the right to discontinue, change specifications or system design at any time without notice and without incurring any obligation, whatsoever.

[EMI Limited Warranty](#) applies, 1-year parts and 5-year compressor.

Table of Contents

MZI Series - Active Models

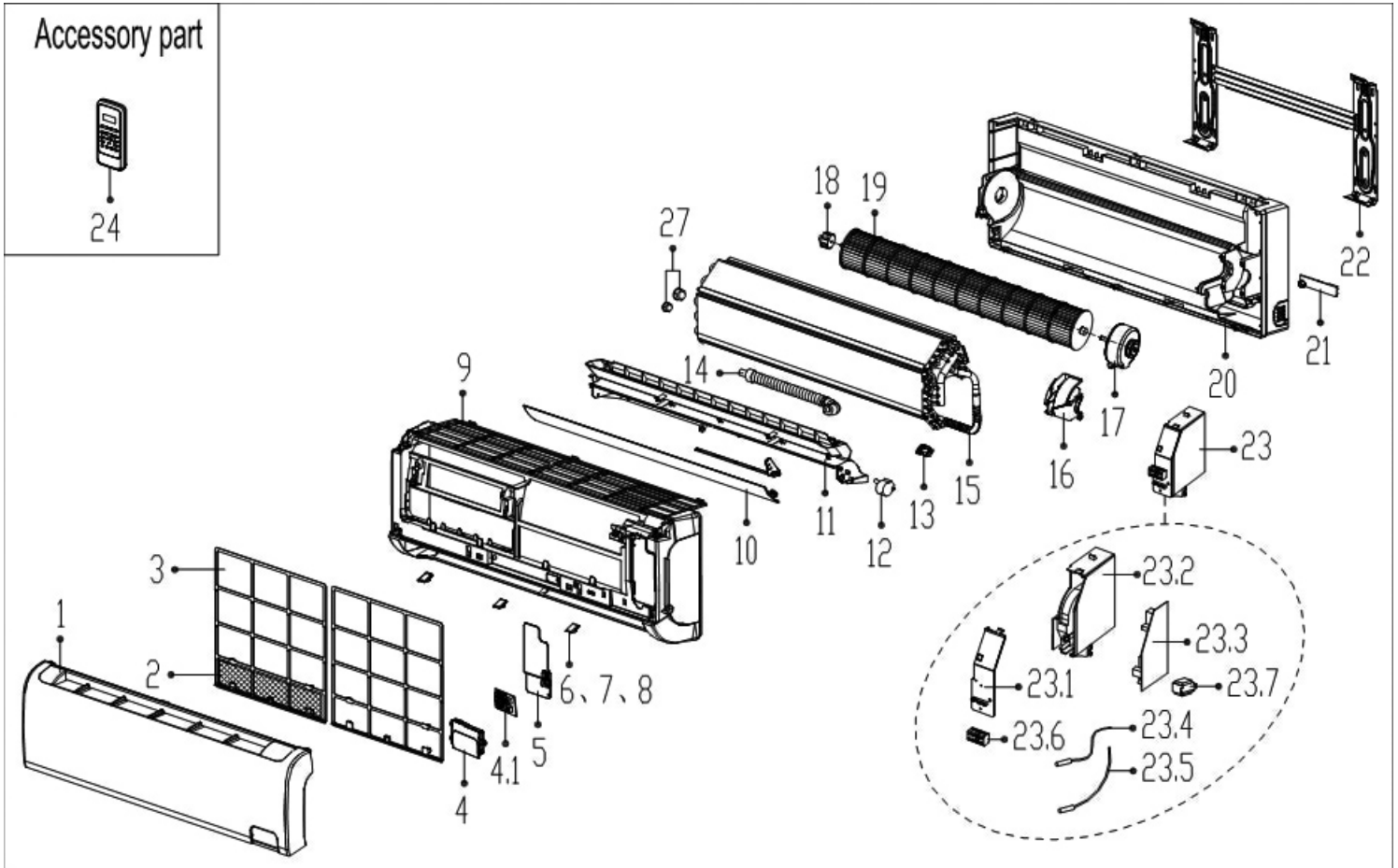
MZI Series MWHA09D0: 9,000 Btuh 230v Heat Pump 16SEER High Wall Air Handler	4
MZI Series MWHA12D0: 12,000 Btuh 230v Heat Pump 16SEER High Wall Air Handler	5
MZI Series MWHA18D0: 18,000 Btuh 230v Heat Pump 16SEER High Wall Air Handler	6
MZI Series MHB18D00: 18,000 Btuh 230v Heat Pump 16SEER Multi-Zone Condenser.....	7
MZI Series MHA27D00: 27,000 Btuh 230v Heat Pump 16SEER Multi-Zone Condenser....	8-11
MZI Series MHA36D00: 36,000 Btuh 230v Heat Pump 16SEER Multi-Zone Condenser..	10-12

MZI Series - Inactive Models

MZI Series MHA18D00: 18,000 Btuh 230v Heat Pump 16SEER Multi-Zone Condenser.	12-13
--	-------

Replacement parts are available for "Inactive Models". Consult Factory for availability, lead times and minimum order quantities.

MZI Series - Active Model 9,000 Btuh 230v Heat Pump MWHA09D0 High-Wall Air Handler

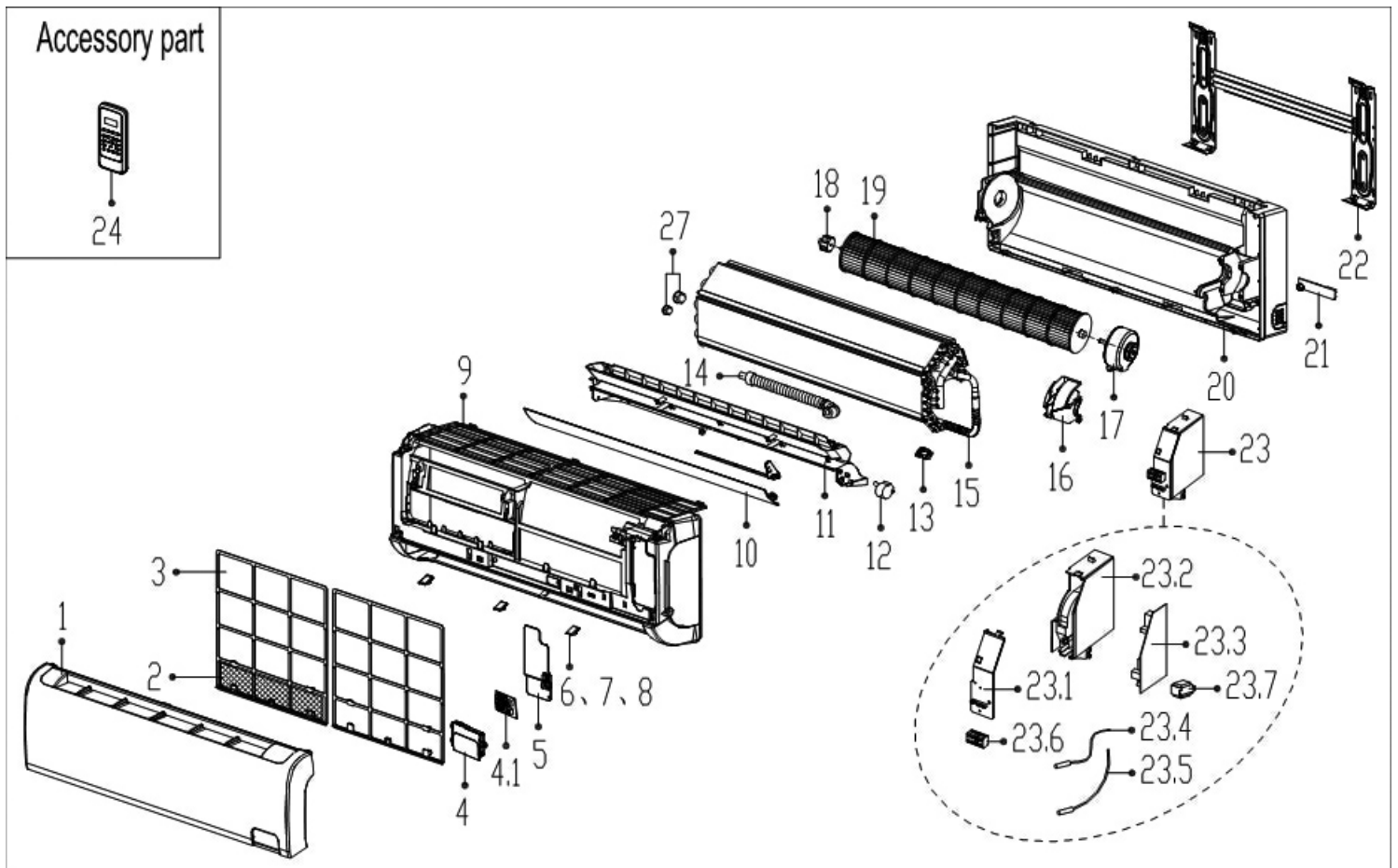


Ref#	Part Number	Description	Qty
1	2011325A4559	Panel assembly	1
2	201131410703	Air freshening filter	1
3	201132591022	Air filter	2
4	203332390661	Display box assembly	1
4.1	#N/A	Display board assembly	1
5	#N/A	Cover of electrical equipment	1
6	#N/A	Screw cap (left)	1
7	#N/A	Screw cap (middle)	1
8	#N/A	Screw cap (right)	1
9	201132590918	Panel frame assembly	1
10	201132590920	Horizontal louver	1
11	#N/A	Air outlet assembly	1
12	202400200006	Louver motor	1
13	201102000305	Fix clamp of temperature sensor	1
14	201101020038	Drain hose	1
15	201532590467	Evaporator assembly	1
16	#N/A	Fan motor cover	1

Ref#	Part Number	Description	Qty
17	202400300137	Asynchronous motor	1
18	202719900606	Bearing base	1
19	201100200039	Cross flow fan	1
20	201132590919	Chassis assembly	1
21	201130100204	Pipe clamp board	1
22	201230390006	Installation plate	1
23	#N/A	Electronic control box assembly	1
23.1	#N/A	Cover of electronic control box	1
23.2	#N/A	Electronic control box	1
23.3	2013520A0192	Indoor main control board assembly	1
23.4	202433190000	Ambient temperature sensor assembly	1
23.5	202301300080	Pipe temperature sensor assembly	1
23.6	#N/A	Wire joint	1
23.7	202300900095	Transformer	1
24	24001010011	Remote Controller	1
27	201600320001	Pipe nut	1
27	201600320000	Pipe nut	1

Items may be subject to minimum order quantity.
#NA: Contact Factory for availability and lead time.

MZI Series -- Active Model 12,000 Btuh 230v Heat Pump MWHA12D0 High-Wall Air Handler

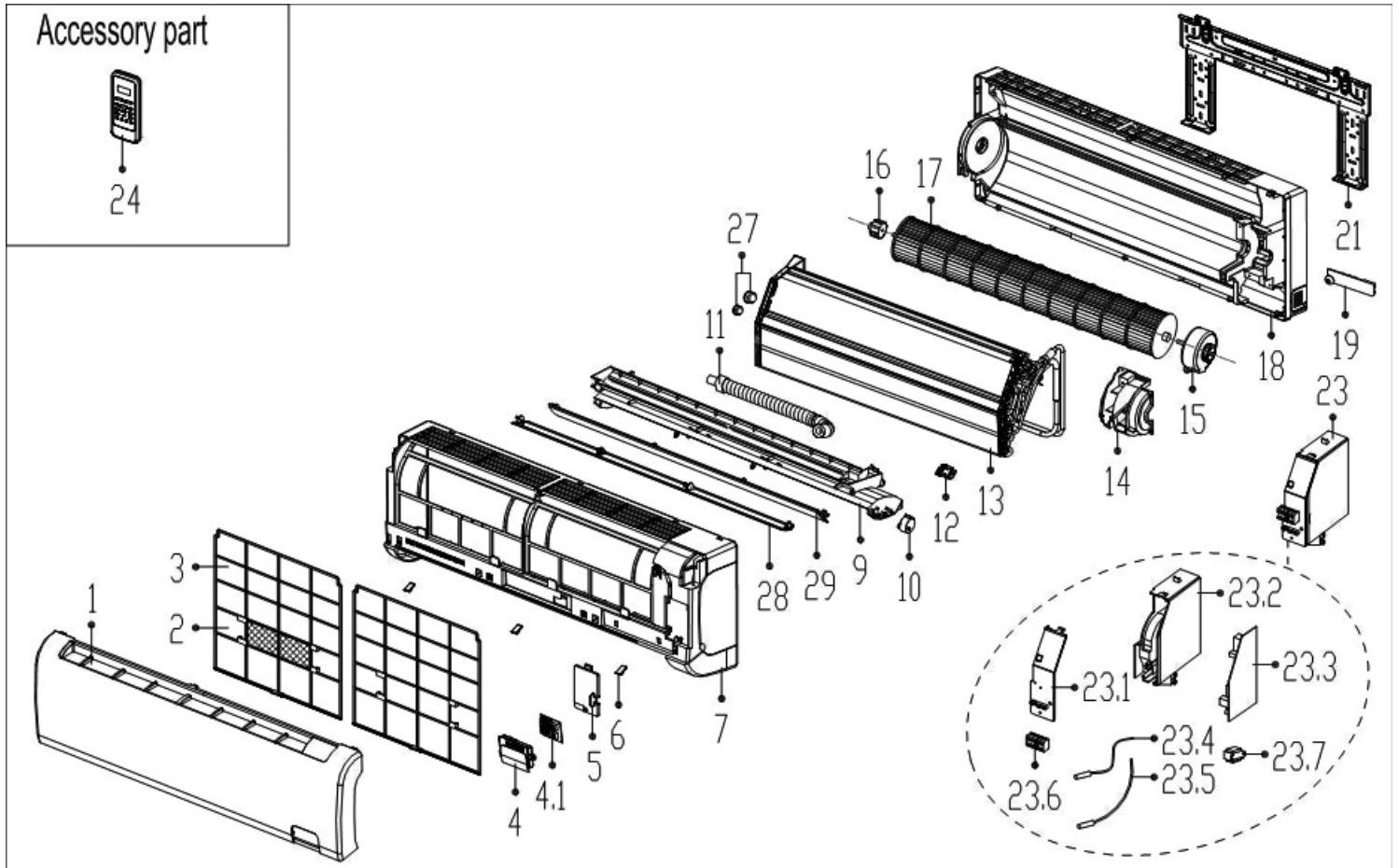


Ref#	Part Number	Description	Qty
1	2011325A4559	Panel assembly	1
2	201131410703	Air freshening filter	1
3	201132591022	Air filter	2
4	203332390661	Display box assembly	1
4.1	#N/A	Display board assembly	1
5	#N/A	Cover of electrical equipment	1
6	#N/A	Screw cap (left)	1
7	#N/A	Screw cap (middle)	1
8	#N/A	Screw cap (right)	1
9	201132590918	Panel frame assembly	1
10	201132590920	Horizontal louver	1
11	#N/A	Air outlet assembly	1
12	202400200006	Louver motor	1
13	201102000305	Fix clamp of temperature sensor	1
14	201101020038	Drain hose	1
15	201532590465	Evaporator assembly	1
16	#N/A	Fan motor cover	1

Ref#	Part Number	Description	Qty
17	202400300137	Asynchronous motor	1
18	202719900606	Bearing base	1
19	201100200039	Cross flow fan	1
20	#N/A	Chassis assembly	1
21	201130100204	Pipe clamp board	1
22	201230390006	Installation plate	1
23	#N/A	Electronic control box assembly	1
23.1	#N/A	Cover of electronic control box	1
23.2	#N/A	Electronic control box	1
23.3	2013520A0213	Indoor main control board assembly	1
23.4	202433190000	Ambient temperature sensor assembly	1
23.5	202301300080	Pipe temperature sensor assembly	1
23.6	#N/A	Wire joint	1
23.7	202300900095	Transformer	1
24	240010011	Remote Controller	1
27	201600320002	Pipe nut	1
27	201600320000	Pipe nut	1

Items may be subject to minimum order quantity.
#NA: Contact Factory for availability and lead time.

MZI Series - Active Model 18,000 Btuh 230v Heat Pump MWHA18D0 High-Wall Air Handler

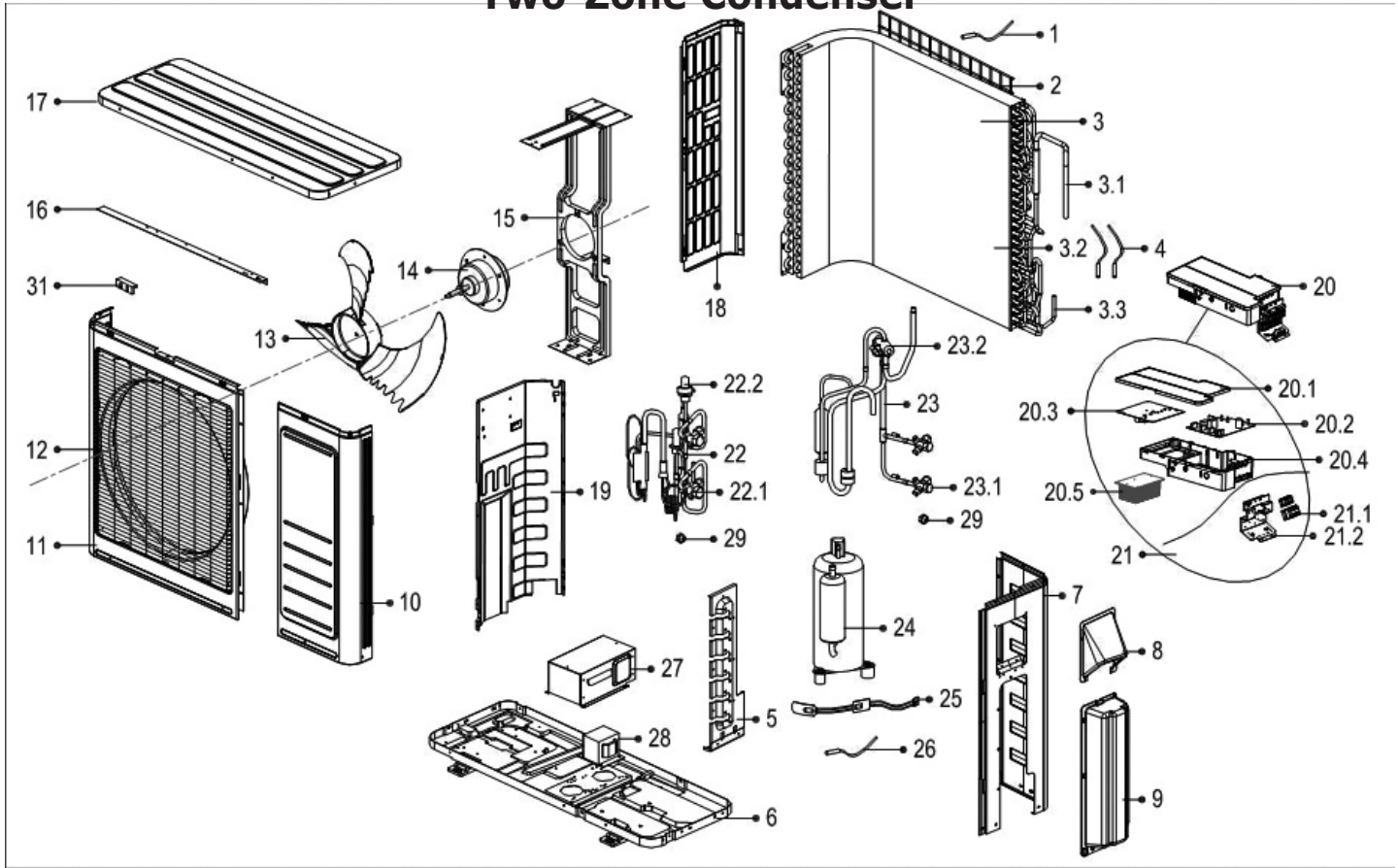


Ref#	Part Number	Description	Qty
1	2011328A2134	Panel assembly	1
2	201131410703	Air freshening filter	1
3	201132890704	Air filter	2
4	203332890292	Display box assembly	1
4.1	#N/A	Display board assembly	1
5	#N/A	Cover of electrical equipment	1
6	#N/A	Screw cap	3
7	201132890616	Panel frame assembly	1
9	#N/A	Air outlet assembly	1
10	202400200120	Louver motor	1
11	201101020038	Drain hose	1
12	201102000305	Fix clamp of temperature sensor	1
13	201532790059	Evaporator assembly	1
14	#N/A	Fan motor cover	1
15	202400300419	Asynchronous motor	1
16	202719900606	Bearing base	1

Ref#	Part Number	Description	Qty
17	201100200014	Cross flow fan	1
18	#N/A	Chassis assembly	1
19	201232800103	Pipe clamp board	1
21	201232790012	Installation plate	1
23	#N/A	Electronic control box assembly	1
23.1	#N/A	Cover of electronic control box	1
23.2	#N/A	Electronic control box	1
23.3	2013520A0259	Indoor main control board assembly	1
23.4	202433190000	Ambient temperature sensor assembly	1
23.5	202301300080	Pipe temperature sensor assembly	1
23.6	202301420101	Wire joint	1
24	240010011	Remote Controller	1
27	#N/A	Pipe nut	1
27	201600320002	Pipe nut	1
28	201132890617	Horizontal louver (above)	1
29	201132890618	Horizontal louver (below)	1

Items may be subject to minimum order quantity.
#NA: Contact Factory for availability and lead time.

MZI Series - Active Model 18,000 Btuh 230v Heat Pump **MHB18D00** Two-Zone Condenser

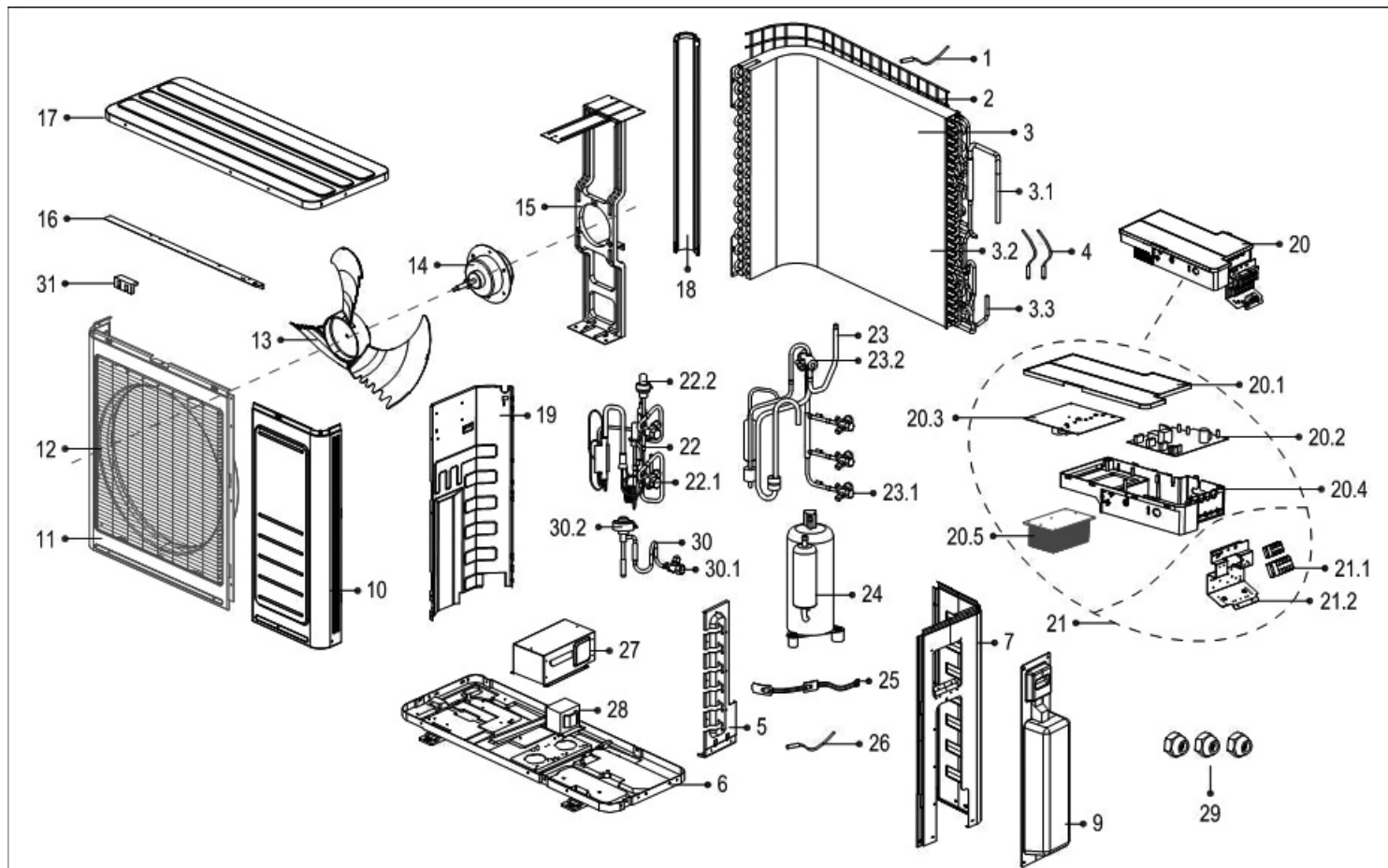


Ref#	Part Number	Description	Qty
1	202301310075	Ambient temperature sensor assembly	1
2	#N/A	Rear net	1
3	201557090037	Condenser assembly	1
3.1	#N/A	Input pipe assembly	1
3.2	#N/A	Condenser	1
3.3	#N/A	Output pipe	1
4	202440500004	Pipe temperature sensor assembly	1
4	202301300423	Pipe temperature sensor assembly	1
5	#N/A	Valve plate	1
6	#N/A	Chassis assembly	1
7	#N/A	Rear right clapboard assembly	1
8	#N/A	Big handle	1
9	201157190013	Water collector	1
10	#N/A	Front right clapboard assembly	1
11	201248100356	Front panel	1
12	#N/A	Air outlet grille	1
13	201100300553	Axial flow fan	1
14	202400300535	Brushless DC Motor	1
15	#N/A	Supporter assembly of fan motor	1
16	201248100384	Rear supporter	1
17	201257190097	Top cover assembly	1
18	201248100364	Left supporter	1
19	#N/A	Partition board assembly	1

Ref#	Part Number	Description	Qty
20	#N/A	Electronic control box assembly	1
20.1	#N/A	Cover of electronic control box	1
20.2	201357090067	Outdoor main control board assembly	1
20.3	201357190108	Inverter control board assembly	1
20.4	#N/A	Installation plate of electric parts	1
20.5	#N/A	Radiator	1
21	203357090064	Terminal board assembly	1
21.1	#N/A	Wire joint	1
21.2	201257190117	Terminal board	1
22	#N/A	Liquid valve assembly	1
22.1	201600740097	Liquid valve	2
22.2	201601300554	Electronic expansion valve assembly	2
23	#N/A	4-ways valve assembly	1
23.1	201600720091	Gas valve	2
23.2	201600690011	4-ways valve	1
24	201400600540	Compressor	1
25	202403100500	Crankcase electric heater	1
26	202448200000	Discharge temperature sensor assembly	1
27	#N/A	Cover of inductance	1
28	202301000943	Reactor	1
29	201600320000	Copper nut	2
31	201135110801	Clamp of front net	8
N/S	240010091	12/18K Line Set Adapter	2

Items may be subject to minimum order quantity.
#NA: Contact Factory for availability and lead time.

MZI Series - *Active Model* 27,000 Btuh 230v Heat Pump MHA27D00 Three-Zone Condenser



Items may be subject to minimum order quantity.
#NA: Contact Factory for availability and lead time.

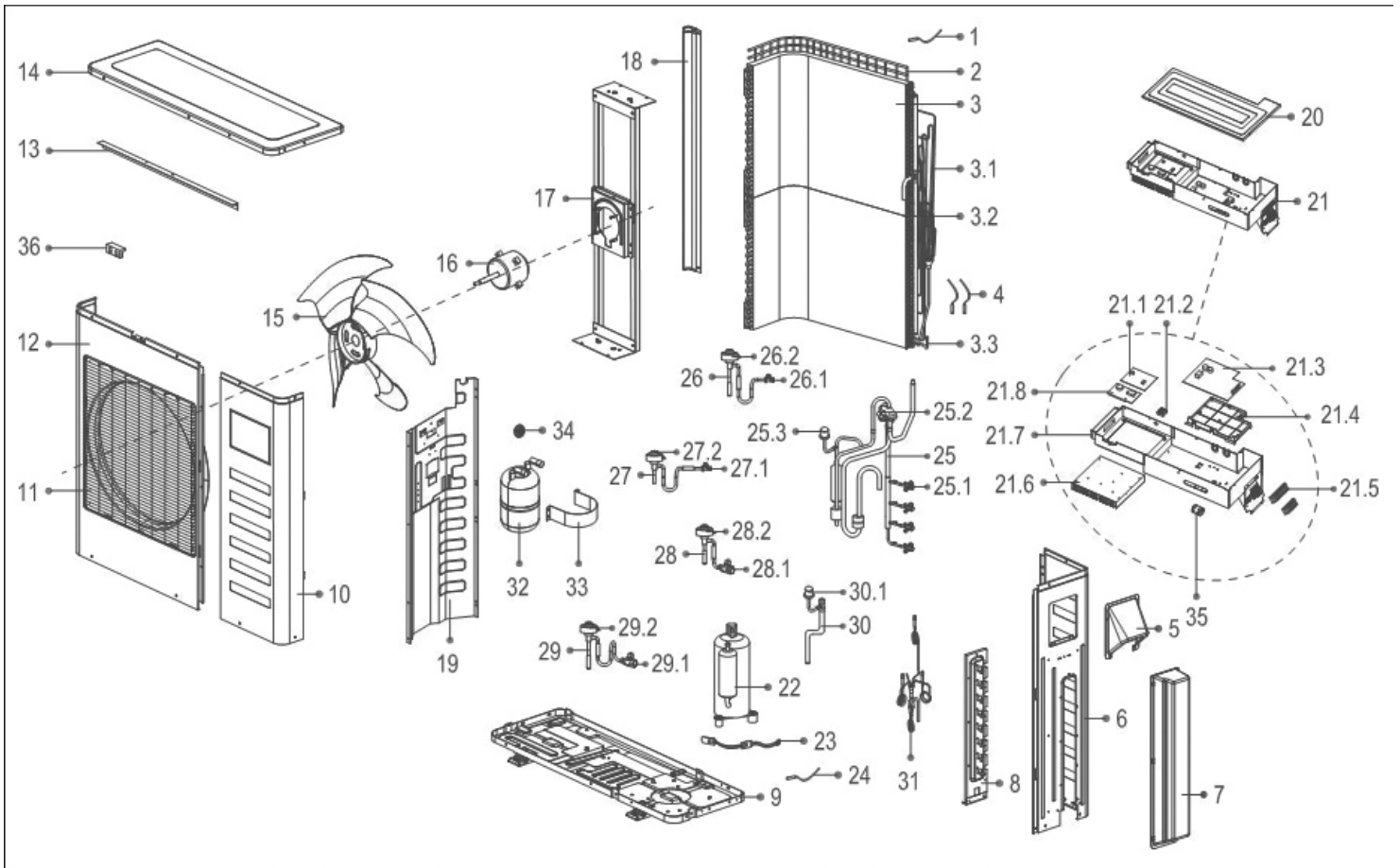
MZI Series - *Active Model* - continued 27,000 Btuh 230v Heat Pump **MHA27D00** Three-Zone Condenser

Ref#	Part Number	Description	Qty
1	202301310075	Ambient temperature sensor assembly	1
2	#N/A	Rear net	1
3	201537891070	Condenser assembly	1
3.1	#N/A	Input pipe assembly	1
3.2	#N/A	Condenser assembly	1
3.3	#N/A	Fluted pipe assembly	1
4	202440500004	Pipe temperature sensor assembly	1
4	202301300422	Pipe temperature sensor assembly	1
5	#N/A	Valve plate	1
6	#N/A	Chassis assembly	1
7	#N/A	Rear right clapboard assembly	1
8	#N/A	Big handle	1
9	201137300183	Water collector	1
10	#N/A	Front right clapboard assembly	1
11	201248100390	Front panel	1
12	201237890112	Air outlet grille	1
13	201100320622	Axial flow fan	1
14	202400401241	Asynchronous motor	1
15	#N/A	Supporter assembly of fan motor	1
16	#N/A	Rear supporter	1
17	201257190097	Top cover assembly	1
18	201248100367	Left supporter	1
19	#N/A	Partition board assembly	1
20	#N/A	Electronic control box assembly	1

Ref#	Part Number	Description	Qty
20.1	#N/A	Cover of electronic control box	1
20.2	2013571A0042	Main control board assembly	1
20.3	201357190108	Inverter control board assembly	1
20.4	#N/A	Installation board for E-parts	1
20.5	#N/A	Radiator	1
21	203357190089	Terminal board assembly	1
21.1	#N/A	Wire joint	2
21.2	201257190117	Terminal board	1
22	#N/A	Liquid valve assembly	1
22.1	201600740097	Liquid valve	2
22.2	201601300554	Electronic expansion valve assembly	2
23	#N/A	4-way valve assembly	1
23.1	201600720091	Gas valve	3
23.2	201600690011	4-Ways valve	1
24	201400600530	Compressor	1
25	202403100500	Crankcase electric heater	1
26	202448200000	Discharge temperature sensor assembly	1
27	#N/A	Cover of inductance	1
28	202301000943	Reactor	1
29	201600320000	Copper nut	3
30	#N/A	Liquid valve assembly	1
30.1	201600740097	Liquid valve	1
30.2	201601300554	Electronic expansion valve assembly	1
31	201135110801	Clamp for front net	8
N/S	240010091	12K/18K Line Set Adapter	3

Items may be subject to minimum order quantity.
#NA: Contact Factory for availability and lead time.

MZI Series - Active Model 36,000 Btuh 230v Heat Pump MHA36D00 Four-Zone Condenser



Items may be subject to minimum order quantity.
#NA: Contact Factory for availability and lead time.

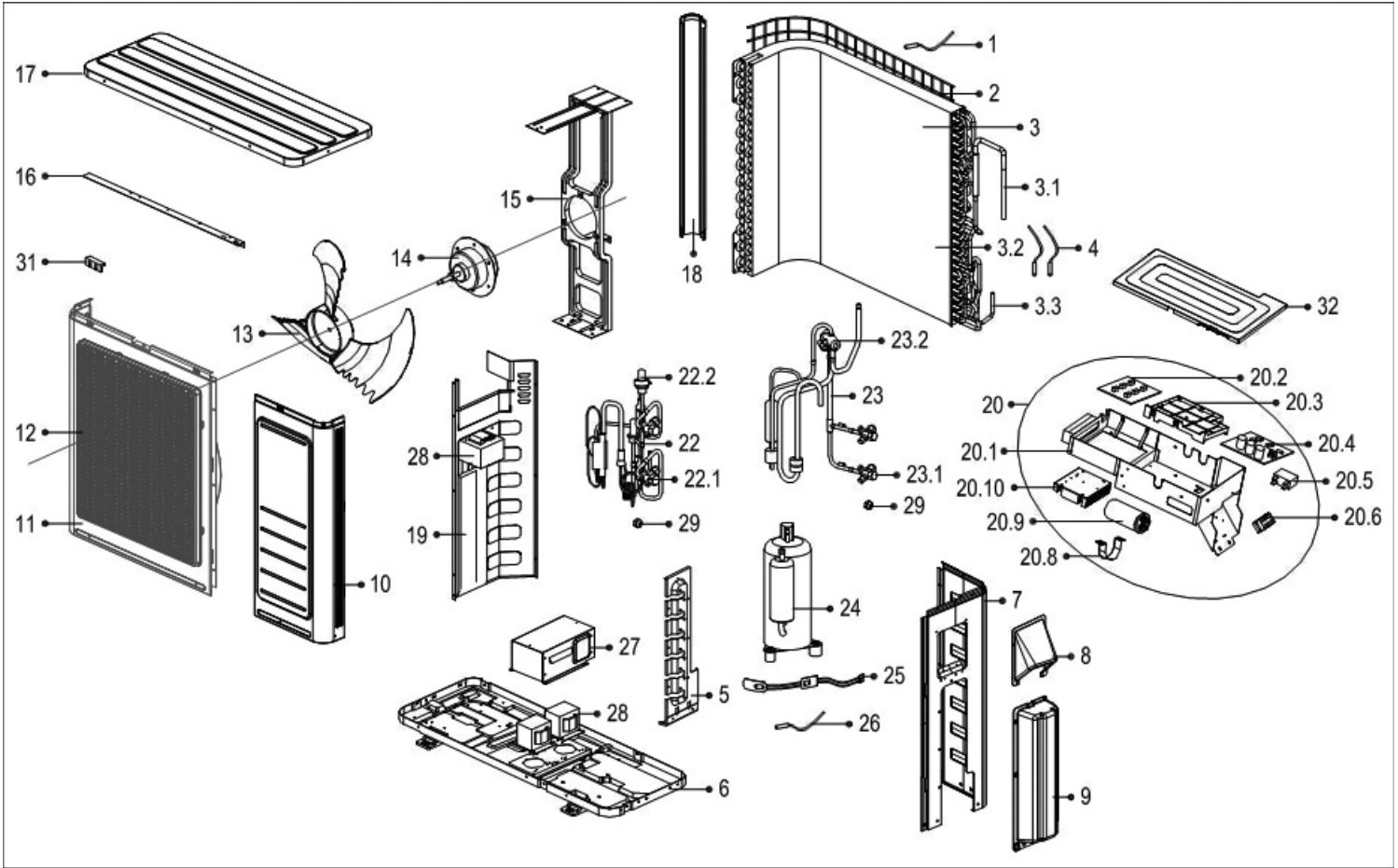
MZI Series - *Active Model* - continued 36,000 Btuh 230v Heat Pump MHA36D00 Four-Zone Condenser

Ref#	Part Number	Description	Qty
1	2011487G0001	Rear net	1
2	202301310075	Ambient temperature sensor assembly	1
3	201557190043	Condenser assembly	1
3.1	#N/A	Input pipe assembly	1
3.2	#N/A	Condenser assembly	1
3.2	#N/A	Condenser assembly	1
3.3	#N/A	Fluted pipe assembly	1
4	202301300111	Pipe temperature sensor assembly	1
4	202301300421	Pipe temperature sensor assembly	1
5	#N/A	Big handle	1
6	#N/A	Rear right clapboard assembly	1
7	201157190015	Water collector	1
8	#N/A	Valve plate	1
9	#N/A	Chassis assembly	1
10	#N/A	Front right clapboard assembly	1
11	201248700055	Air outlet grille	1
12	201248700072	Front panel	1
13	#N/A	Rear supporter	1
14	201257190096	Top cover assembly	1
15	201100320624	Axial flow fan	1
16	202400300051	Asynchronous motor	1
17	#N/A	Supporter assembly of fan motor	1
18	201248700262	Left supporter	1
19	#N/A	Partition board assembly	1
20	#N/A	Cover of electronic control box	1
21	#N/A	Electronic control box assembly	1
21.1	201357190031	Variable-frequency Module Subassembly	1
21.2	202300500328	Insulation plate	1
21.3	201357190091	Main control board assembly	1
21.4	#N/A	Installation plate of electric parts	1
21.5	#N/A	Wire joint	1
21.5	#N/A	Wire joint	1

Ref#	Part Number	Description	Qty
21.6	#N/A	Radiator	1
21.7	#N/A	Installation plate of electric parts	1
21.8	201319901145	Active PFC Module Subassembly	1
22	201401500220	Compressor	1
23	202403101715	Crankshaft Electrical Heating Strip	1
24	202448200000	Discharge temperature sensor assembly	1
25	#N/A	4-Ways valve assembly	1
25.1	201600720091	Gas valve	4
25.2	201600600124	4-Ways valve	1
25.3	202301820042	Pressure Controller(RoHS)	1
26	#N/A	liquid valve assembly	1
26.1	201600740091	Liquid valve	1
26.2	201601300554	liquid valve assembly(35X2)	1
27	#N/A	liquid valve assembly	1
27.1	201600740091	Liquid valve	1
27.2	201601300554	liquid valve assembly(35X2)	1
28	#N/A	liquid valve assembly	1
28.1	201600740091	Liquid valve	1
28.2	201601300554	liquid valve assembly(35X2)	1
29	#N/A	liquid valve assembly	1
29.1	201600740091	Liquid valve	1
29.2	201601300554	liquid valve assembly(35X2)	1
30	#N/A	Suction pipe assembly	1
30.1	202301820021	Pressure Controller(RoHS)	1
31	201657290009	Capillary assembly	1
32	201601000074	Accumulator cylinder	1
33	201245000901	Fix clamp of segregator	1
34	202301000523	PFC Inductor	1
35	202301000020	Magnetic Loop	2
36	201135110801	Clamp of front net	10
N/S	240010091	12K/18K Line Set Adapter	4

Items may be subject to minimum order quantity.
#NA: Contact Factory for availability and lead time.

MZI Series - Inactive Model
18,000 Btuh 230v Heat Pump MHA18D00
Two-Zone Condenser



Items may be subject to minimum order quantity.
#NA: Contact Factory for availability and lead time.

MZI Series - *Inactive Model* - continued 18,000 Btuh 230v Heat Pump MHA18D00 Two-Zone Condenser

Ref#	Part Number	Description	Qty
1	202301310075	Ambient temperature sensor assembly	1
2	#N/A	Rear net	1
3	201557090037	Condenser assembly	1
3.1	#N/A	Input pipe assembly	1
3.2	#N/A	Condenser	1
3.3	#N/A	Output pipe	1
4	202440500004	Pipe temperature sensor assembly	1
4	202301300423	Pipe temperature sensor assembly	1
5	#N/A	Valve plate	1
6	#N/A	Chassis assembly	1
7	#N/A	Rear right clapboard assembly	1
8	#N/A	Big handle	1
9	201157190013	Water collector	1
10	#N/A	Front right clapboard assembly	1
11	201248100390	Front panel	1
12	#N/A	Air outlet grille	1
13	201145500002	Axial flow fan	1
14	202400400955	Asynchronous motor	1
15	#N/A	Supporter assembly of fan motor	1
16	#N/A	Rear supporter	1
17	201257190097	Top cover assembly	1
18	201248100367	Left supporter	1
19	#N/A	Partition board assembly	1
20	#N/A	Electronic control box assembly	1

Ref#	Part Number	Description	Qty
20.1	#N/A	Electronic control box	1
20.2	201357190062	Inverter control board assembly	1
20.3	#N/A	Support of electronic control plate	1
20.4	2013570A0010	Outdoor main control board assembly	1
20.5	202401100353	Fan motor capacitor	1
20.6	#N/A	Wire joint	2
20.8	#N/A	Capacitor clip	1
20.9	202401000079	Capacitor of compressor	1
20.10	202301990007	Radiator	1
22	#N/A	Liquid valve assembly	1
22.1	201600740097	Liquid valve	2
22.2	201601300658	Electronic expansion valve assembly	2
23	201657090312	4-ways valve assembly	1
23.1	201600720091	Gas valve	2
23.2	201600690011	4-ways valve	1
24	201400600540	Compressor	1
25	202403100500	Crankcase electric heater	1
26	202448200000	Discharge temperature sensor assembly	1
27	#N/A	Cover of inductance	1
28	202301000818	Reactor	1
28	202301000832	Reactor	1
28	202301040055	Reactor	1
29	201600320000	Copper nut	2
31	201135110801	Clamp of front net	8
32	#N/A	Cover of electronic control box	1

Items may be subject to minimum order quantity.
#NA: Contact Factory for availability and lead time.



ECR International, Inc.
2201 Dwyer Avenue • Utica, New York 13501
Phone: 800.325.5279 • Web: enviromaster.com