

LWCO FIELD KIT 550002998 for Series 2 Gas Cast Iron Boilers

Installation Instructions

Vent Damper Models: MGB, OMGB, MGC, OMGC, 15B, UH15B, GMGWB
Induced Draft Models: XEB, SVB,FSB, OSVB,GMPVB,CSVB

Kit installation shall be completed by qualified agency.

⚠ WARNING

Fire, explosion, asphyxiation and electrical shock hazard. Improper installation could result in death or serious injury. Read this instruction and understand all requirements, including requirements of authority having jurisdiction, before beginning installation. Installation not complete until appliance operation verified per Installation, Operation & Maintenance Manual provided with boiler.

General Instructions:

1. Follow instructions TO TURN OFF GAS TO APPLIANCE found on Operating Instructions label on boiler or in Installation, Operation & Maintenance Manual. Verify all electrical power to boiler is turned off.

⚠ WARNING

Electrical shock hazard. Turn OFF electrical power supply at service panel.

2. Remove front jacket panel(s).

⚠ WARNING

Burn hazard. Verify heat exchanger, igniter, and flame sensor have cooled or use appropriate personal protection equipment.

3. Inspect combustion chamber through sight glass. Verify flame is not present.

Vent Damper Model Boiler Instructions:

1. Disconnect electrical power.
2. Remove plastic control cover. Unplug 2 wire transformer secondary molex from control board.
3. Connect transformer secondary plug to corresponding plug on LWCO wire harness (included in kit). Plug second wire harness plug into control board where transformer plug had been. See figure 1.
4. Disconnect plastic split bushing from bottom of control chassis. See figure 2.
5. Fish LWCO harness through bottom hole in control chassis. Be careful not to cut harness on any sharp edges.
6. Fit harness into plastic split bushing along with boiler wires.
7. Reinstall split bushing on control chassis. See figure 3.
8. Reinstall plastic control cover.

Figure 1

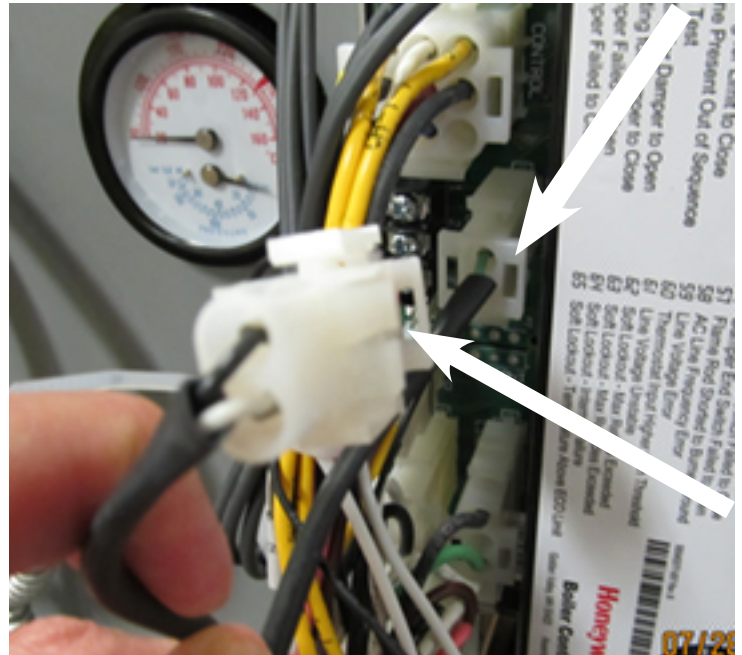
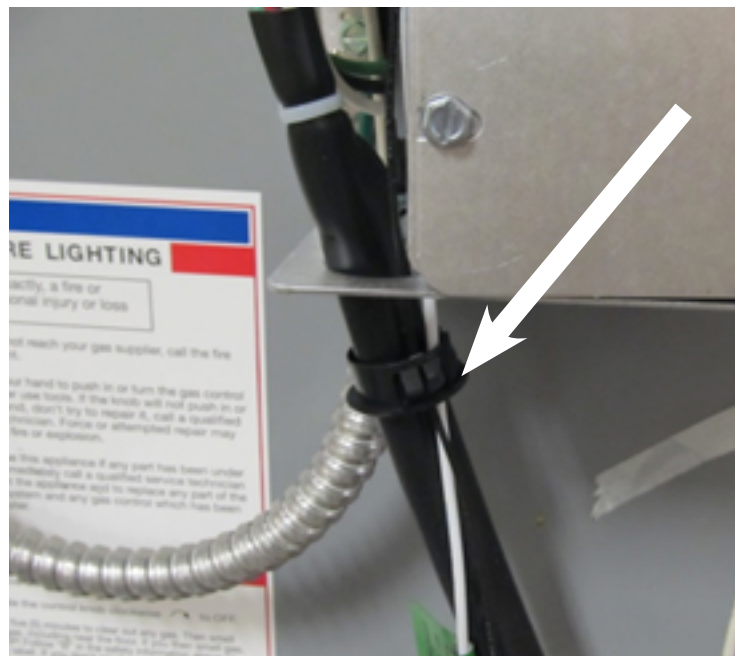


Figure 2



LWCO FIELD KIT INSTALLATION INSTRUCTIONS

9. Install included tee on supply water connection using pipe dope. Keep in mind available wire harness length when locating LWCO. See figure 4.
10. Install Low water cutout into tee using pipe dope. Hand tighten only.
11. Connect LWCO wire harness to LWCO.
12. Reconnect electrical power.
13. Test LWCO using test button. Refer to separate LWCO instructions.
14. Retain enclosed wiring diagram for future use.
15. General Finish Instructions
 - Resume operation using OPERATING INSTRUCTIONS found on Operating Instructions label on boiler or in Installation, Operation & Maintenance Manual.
 - Verify proper operation by following START UP PROCEDURE in Installation, Operation & Maintenance Manual.
 - Install front jacket panel(s).

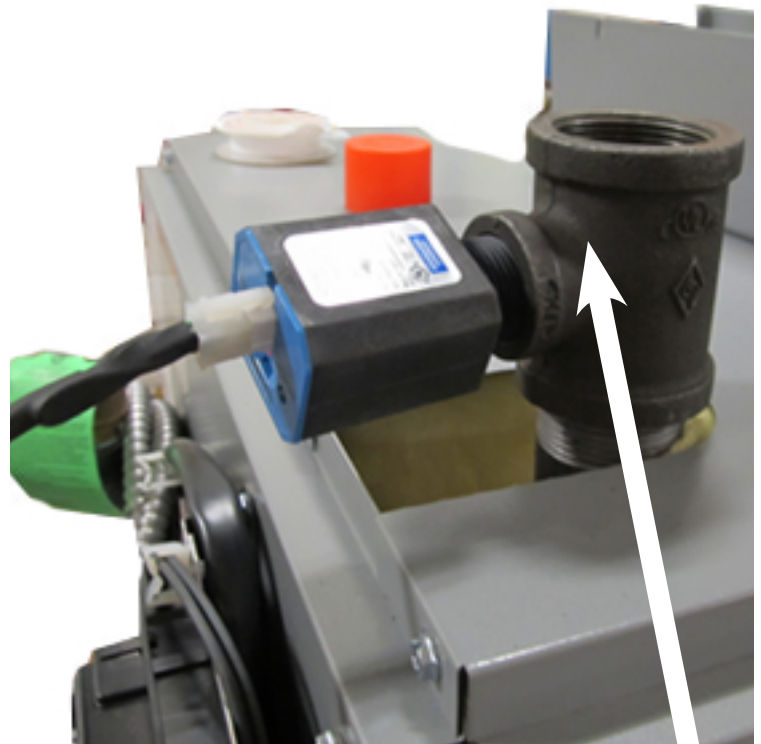
Figure 3



Induced Draft Boiler Instructions:

1. Disconnect electrical power.
2. Remove from panel.
3. Unplug 2 wire transformer secondary molex from control board. See figure 1.
4. Connect transformer secondary plug to corresponding plug on LWCO wire harness (included in kit). Plug second wire harness plug into control board where transformer plug had been. See figure 5.
5. Pull other end of wire harness through knockout on control panel, down along right side of boiler, and through bottom knockout near gas valve. See figure 6.
6. Install included short pipe nipple and tee on supply water connection using pipe dope. Keep in mind available wire harness length when locating LWCO.
7. Install Low water cutout into tee using pipe dope. Hand tighten only.
8. Connect LWCO wire harness to LWCO.
9. Reconnect electrical power.
10. Test LWCO using test button. Refer to separate LWCO instructions.
11. Retain enclosed wiring diagram for future use.
12. General Finish Instructions
 - Resume operation using OPERATING INSTRUCTIONS found on Operating Instructions label on boiler or in Installation, Operation & Maintenance Manual.
 - Verify proper operation by following START UP PROCEDURE in Installation, Operation & Maintenance Manual.
 - Install front jacket panel(s).

Figure 4



LWCO FIELD KIT INSTALLATION INSTRUCTIONS

Figure 5

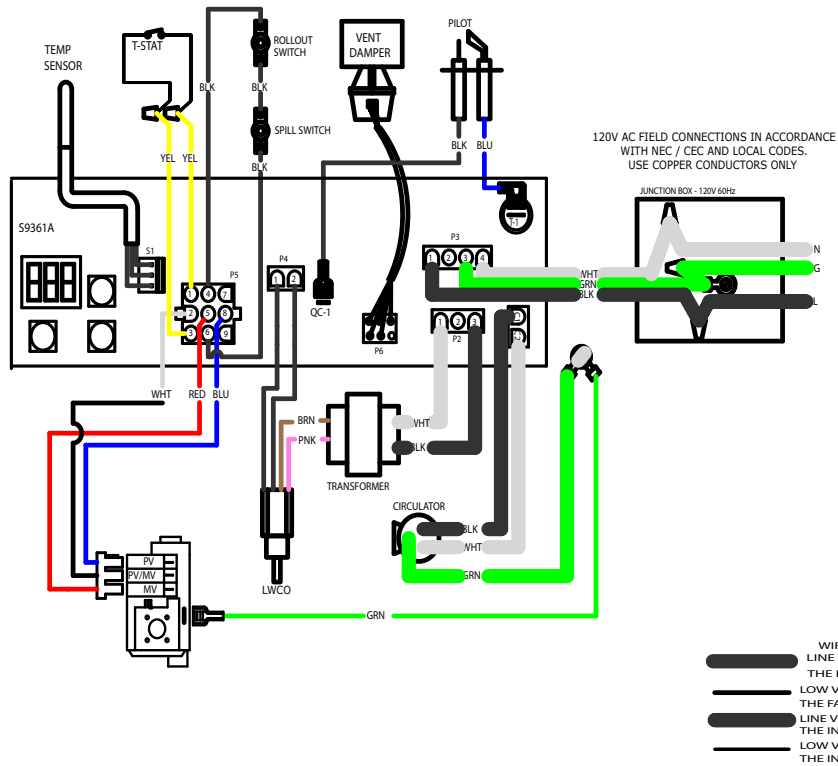


Figure 6



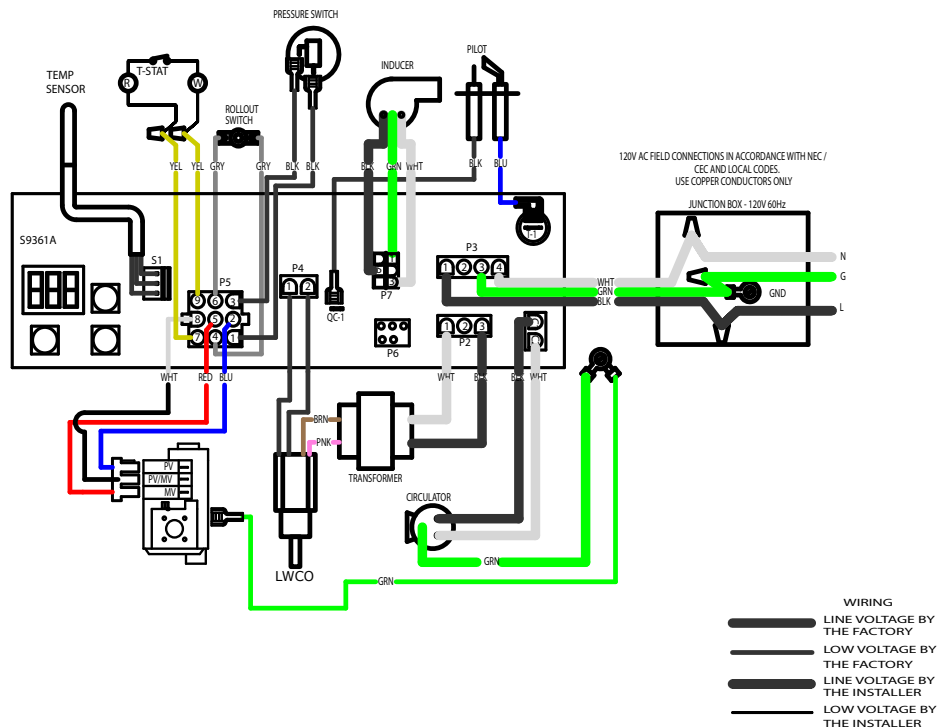
LWCO FIELD KIT INSTALLATION INSTRUCTIONS

WIRING DIAGRAM: HOT WATER - ATMOSPHERIC DRAFT BOILER



614002652 REV A

WIRING DIAGRAM: HOT WATER - INDUCED DRAFT BOILER



614002652 REV A