

HONEYWELL CONTROL CONVERSION KIT #550003078 INSTRUCTIONS

Installation shall be completed by qualified agency.

⚠ WARNING

Fire, explosion, asphyxiation, and electrical shock hazard. Improper installation could result in death or serious injury. Read these instructions and understand all requirements, including requirements of authority having jurisdiction, before beginning installation. Installation not complete until appliance operation is verified per Installation, Operation & Maintenance Manual provided with boiler.

Control installation shall conform to requirements of authority having jurisdiction or in absence of such requirements:

- United States
 - National Fuel Gas Code, ANSI Z223.1/NFPA 54.
 - National Electrical Code, NFPA 70.
 - Canada
 - Natural Gas and Propane Installation Code, CAN/CSA B149.1.
 - Canadian Electrical Code, Part I, Safety Standard for Electrical Installations, CSA C22.1
1. Remove plastic control chassis cover.
 2. Scroll through control and record settings: SP,HL,HdF.
 3. Verify all power is OFF to boiler and control.
 4. Unplug all connections from existing control board.
 5. Remove existing control board from chassis.
 6. Open Junction box cover and disconnect Line voltage connections L1, L2, and G.
 7. Remove High voltage harness from J-box.
 8. Install new high voltage harness into J-box.
 9. Connect ring end of ground strap to boiler base with enclosed screw. See Figure 1.
 10. Carefully pull ground strap wire through bushing at bottom of control chassis and attach to ground screw on chassis. See Figure 2.
 11. Install new control board in same position as old control.

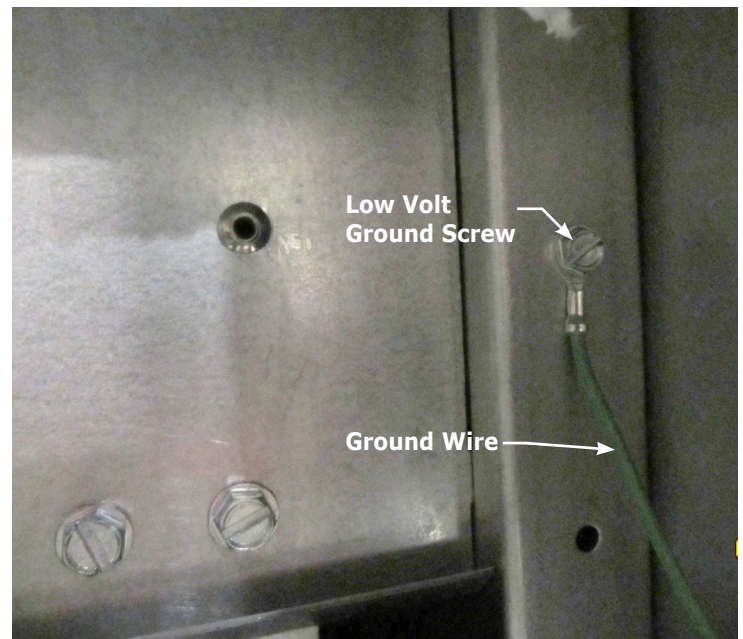
NOTICE

Important! Retain for future reference.

HONEYWELL CONTROL REPLACEMENT KIT # 550003078 CONTENTS

Description	Item Number	Qty
Control, Honeywell	240011101	1
Ground Strap	240011099	1
Wire Harness High Volt	240011055	1
Wiring Diagram	240011094	1
Bushing	240011095	1
Spark Pilot Kit	550003057	1
Screw	14695074	1
Instructions	240011137	1

Figure 1 - Ground Wire Connected to Base with Low Volt Ground Screw



12. Reinstall sensor connection, 9 pin molex connection, transformer secondary and damper connection. Plug in new 5 pin molex connection from new high volt harness.
13. Connect transformer primary and circulator to appropriate molex plugs provided on new high volt harness.

⚠ WARNING

Electrical shock hazard. Turn OFF electrical power supply at service panel before making electrical connections. Failure to do so could result in death or serious injury.

14. **Install new pilot kit.** Instructions are included in pilot kit.

NOTICE

New pilot kit is shipped for natural gas .
For LP applications, change pilot orifice to LP pilot orifice.

15. Connect ground strap to boiler base as shown in illustration. See Figure 2.
16. Using supplied Bushing, route ignition cable as shown in illustration and connect to control. See Figure 3.
17. Connect line voltage supply (hot, neutral and ground) from junction box wiring on boiler to line voltage using BX conduit and 18 gauge wire. L1 = hot, L2 = neutral, ground to green screw. Service switch remains functional.
18. Refer to enclosed wiring diagrams. Verify all wiring matches enclosed applicable wiring diagrams.
19. Restore electrical power to boiler and adjust settings to values recorded in step 1.
20. Retain enclosed literature with boiler for future reference.
21. Installation not complete until appliance operation is verified per Installation, Operation & Maintenance Manual provided with boiler.

Figure 2 - Ground Screw

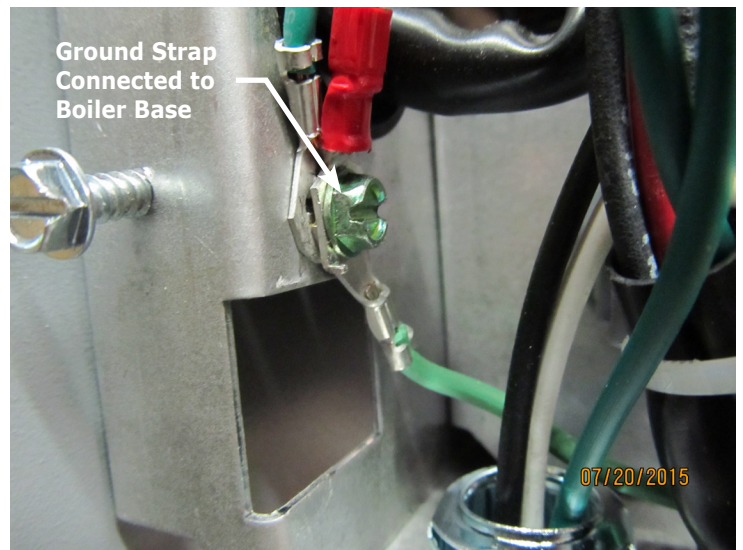
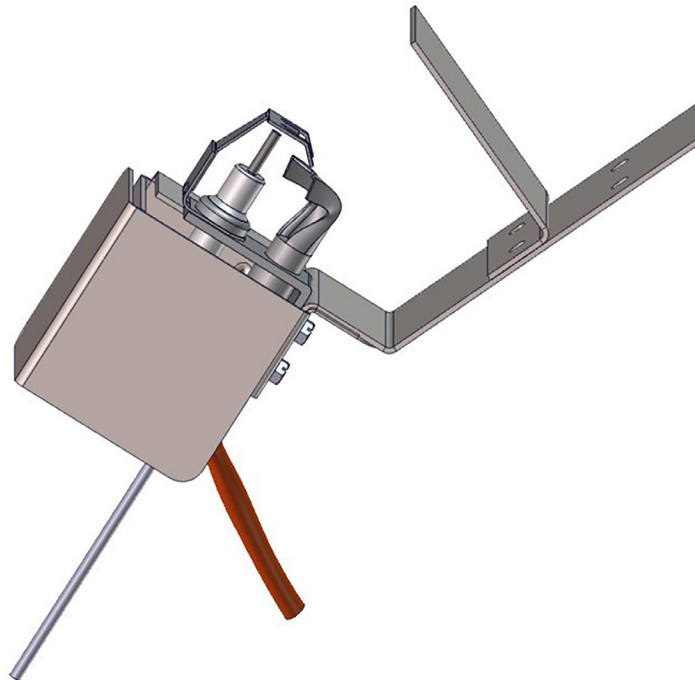


Figure 3 - Route Ignition Cable

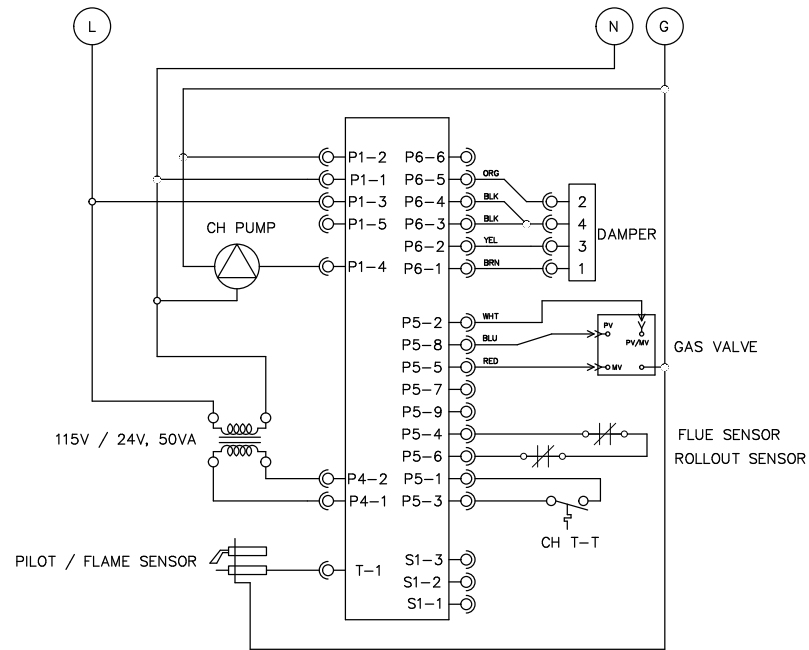
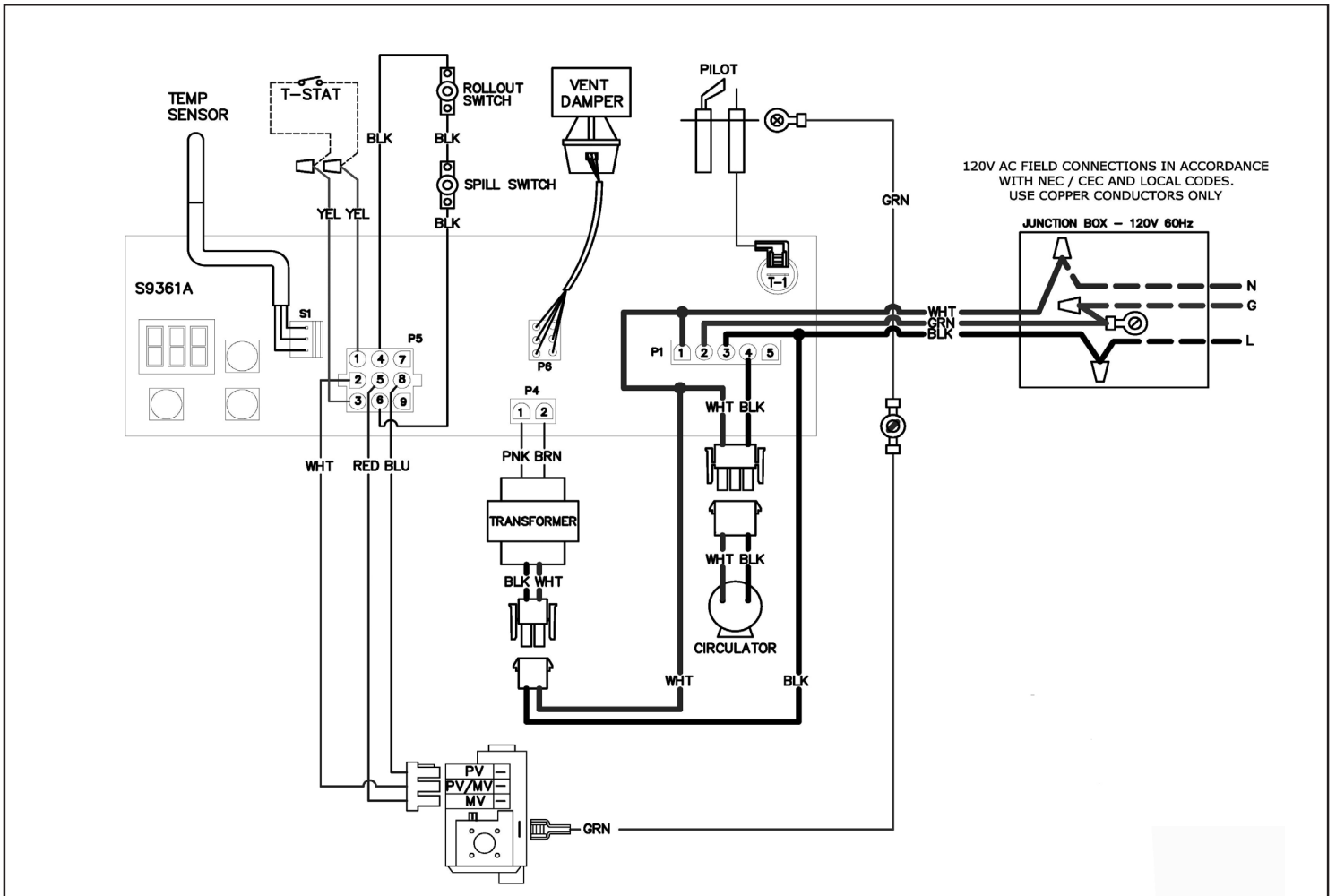


SPARK PILOT

Spark Pilot Kit - Natural Gas 550003039		
Spark Pilot Kit - LP/Propane 550003040		
Item #	Description	Qty.
1	PILOT AND BRACKET ASSEMBLY (NAT. GAS)	1
	PILOT AND BRACKET ASSY (LP/PROPANE)	
*	BRACKET SCREW	2
*	COMPRESSION FITTING	1
* NOT SHOWN		



WIRING DIAGRAM SPARK PILOT



LADDER DIAGRAM: HOT WATER - ATMOSPHERIC DRAFT BOILER