

399 BLOWER REPLACEMENT KIT INSTRUCTIONS

Kit #550003099

Kit installation shall be completed by qualified agency.

⚠ WARNING

Fire, explosion, asphyxiation and electrical shock hazard. Improper installation could result in death or serious injury. Read this instruction and understand all requirements, including requirements of authority having jurisdiction, before beginning installation. Installation not complete until appliance operation verified per Installation, Operation & Maintenance Manual provided with boiler.

Tools Required:

- 2 Crescent Wrenches
- Slotted Screwdriver
- Phillips Screwdriver

1. Follow instructions TO TURN OFF GAS TO APPLIANCE found on Operating Instructions label on boiler or in Installation, Operation & Maintenance Manual. Verify all electrical power to boiler is turned off.

⚠ WARNING

Electrical shock hazard. Turn OFF electrical power supply at service panel.

2. Remove front jacket panel.

⚠ WARNING

Burn hazard. Verify heat exchanger, igniter, and flame sensor have cooled or use appropriate personal protection equipment.

3. Inspect combustion chamber through sight glass. Verify flame is not present. See Figure 1.
4. Turn off gas at manual main shutoff valve.
5. Remove optional Air Filter.
6. Disconnect display harness and remove user interface panel. See figure 1.
7. Disconnect Gas Valve Harness. Loosen retaining screw and disconnect harness from gas valve. See figure 2.
8. Disconnect gas valve left (inlet) flange. See figure 2.

Figure 1 - Sight Glass, User Interface, User Interface Panel

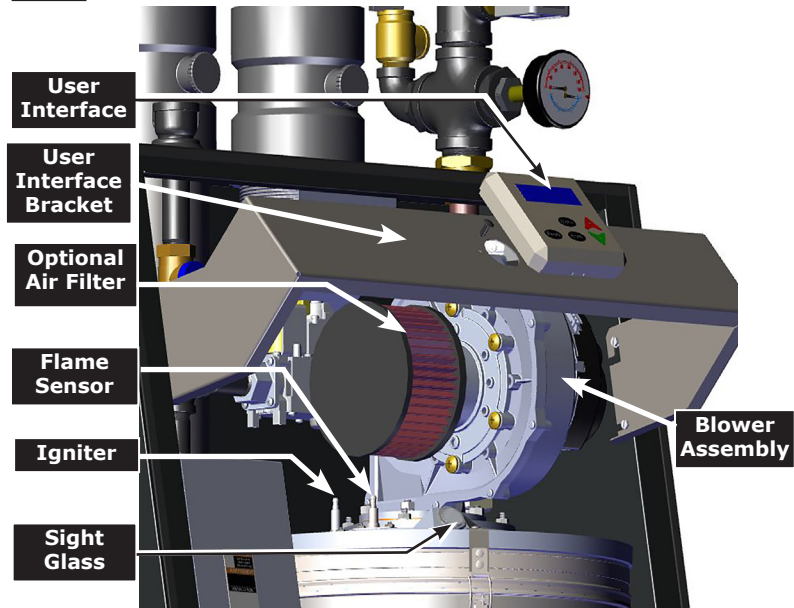
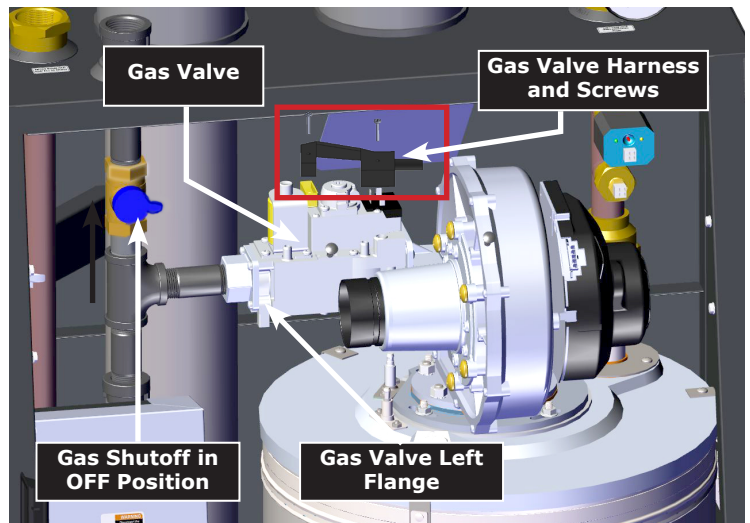


Figure 2 - Gas Valve, Gas Shutoff Valve, Gas Harness

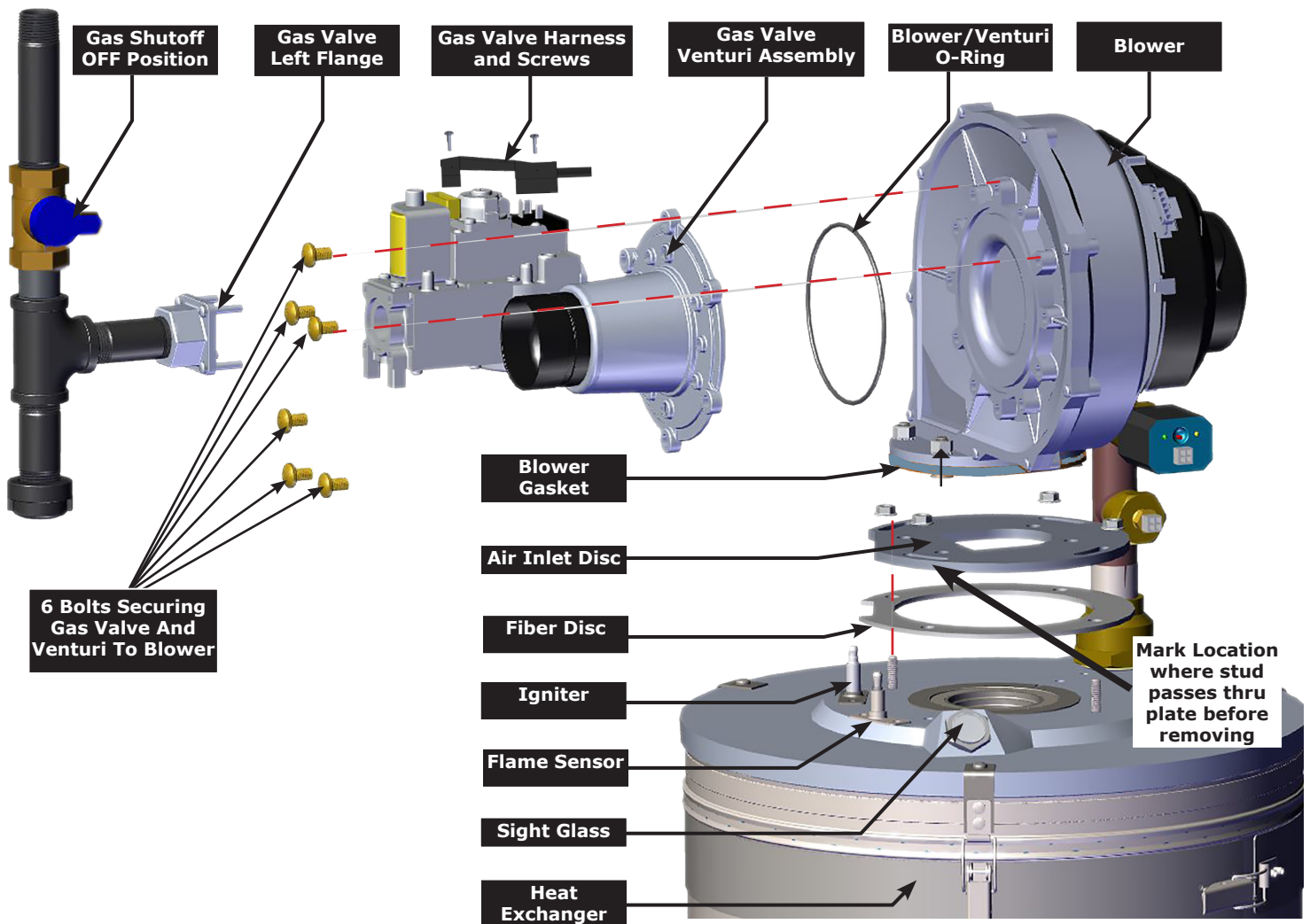


BLOWER REPLACEMENT KIT INSTRUCTIONS

9. Remove Blower Assembly

- Disconnect igniter cable from igniter. Disconnect flame sensor cable from flame sensor and ground wire from stud.
- Disconnect two (2) harness moxex connectors from blower.
- Mark stud location on air inlet disc. See figure 3.
- Support air inlet assembly. Remove four (4) ¼-20 hex flange nuts securing air inlet disc to heat exchanger using 7/16" deep well socket. Remove blower/gas valve/venturi assembly.
- Remove four (4) hex nuts securing blower to air inlet disc. See figure 3.
- Remove gas valve and venturi assembly from old blower using 6 bolts securing it to blower. See figure 3.
- Remove four (4) hex nuts securing red gasket to blower outlet.

Figure 3 - Blower/Gas Valve Assembly



BLOWER REPLACEMENT KIT INSTRUCTIONS

10. Install New Blower. See figure 4.

- Install Gas Valve / Venturi assembly on new blower. Use supplied new o-ring.
- Install Air inlet disc to blower. Use supplied new red gasket to blower outlet. Align center opening and screw holes.
- Place air inlet to blower outlet with alignment noted or marked in step 8 above. Secure with four (4) 10-32 x 1/2" cap screws using 4mm Allen wrench.

11. Install Air Inlet Assembly

- Replace existing fiber gasket with new gasket provided with kit. Align gasket with studs in heat exchanger.
- Place air inlet assembly onto heat exchanger. Secure hand tight with four (4) 1/4-20 hex flange nuts. See figure 3.
- Verify minimum 1/8" clearance between blower and piping. Complete tightening nuts.
- Connect two (2) harness connectors to blower. Attach flame sensor cable to flame sensor. Attach igniter cable to igniter

12. Install gas valve left flange onto gas valve.

13. Install Gas Valve Harness. Attach gas valve harness to gas valve. Secure with integral screw. See figure 2.

14. Reinstall display bracket. Re-connect display harness.

15. Gas Line Leak Test

- Turn on gas at manual main gas shutoff valve.
- Check for gas line leaks using gas detector, noncorrosive detection fluid, or other leak detection method acceptable to authority having jurisdiction. Correct leaks immediately.

⚠ DANGER

Fire hazard. Do not use matches, candles, open flames, or other methods providing ignition source. Failure to comply will result in death or serious injury.

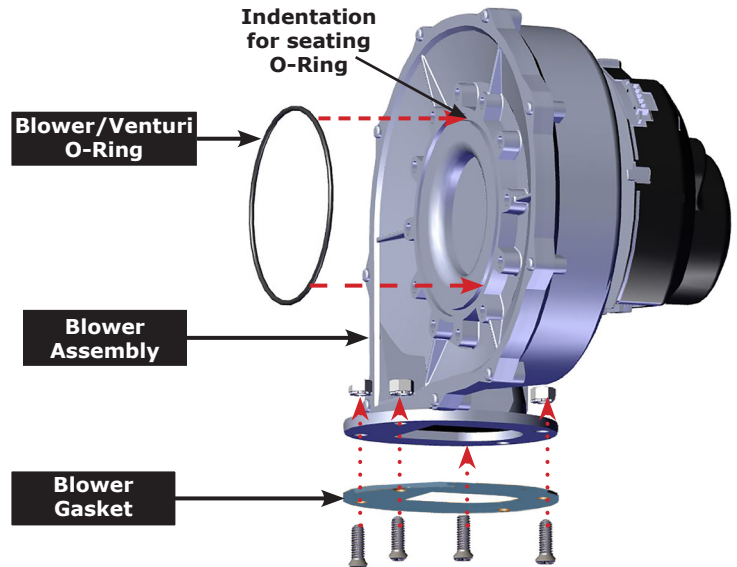
16. General Finish Instructions

- Resume operation using OPERATING INSTRUCTIONS found on Operating Instructions label on boiler or in Installation, Operation & Maintenance Manual.
- Verify proper operation by following START UP PROCEDURE in Installation, Operation & Maintenance Manual.
- Install front jacket panel.

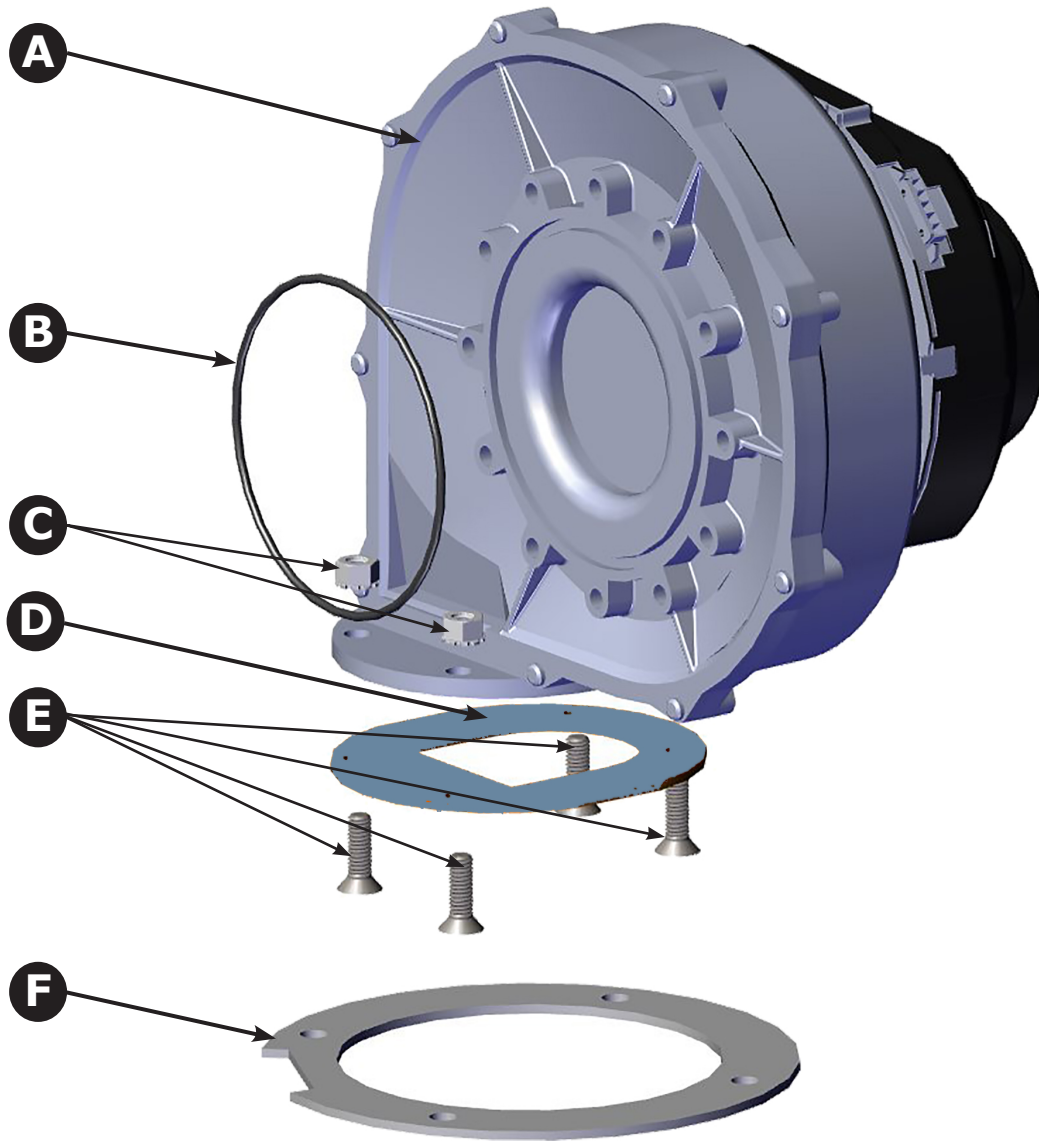
NOTICE

Use two (2) wrenches when tightening gas lines. Boiler components can be damaged if subjected to excessive torque.

Figure 4 - Blower Assembly



BLOWER REPLACEMENT KIT INSTRUCTIONS



399 Blower Kit # 550003099				
	ITEM	DESCRIPTION	PART #	QTY
Blower Motor Kit #550003099 includes all items listed	A	Blower, EBM, RG175	-	1
	B	O-ring, 110 MM, 3.5M	-	1
	C	Nut, 31-18, K-Lock	-	4
	D	Gasket, Blower, Index Plate	-	1
	E	Screw, Phillips Flat Head .31-18 x1	-	4
	F	Fiber Gasket for Heat Exchanger	-	1
	*	Instructions	-	1

Check our website frequently for updates: www.ecrinternational.com