

399 Venturi REPLACEMENT KIT INSTRUCTIONS

Kit #550003098

Kit installation shall be completed by qualified agency.

⚠ WARNING

Fire, explosion, asphyxiation and electrical shock hazard. Improper installation could result in death or serious injury. Read this instruction and understand all requirements, including requirements of authority having jurisdiction, before beginning installation. Installation not complete until appliance operation verified per Installation, Operation & Maintenance Manual provided with boiler.

Tools Required:

- 2 Crescent Wrenches
- Slotted Screwdriver
- Phillips Screwdriver

1. Follow instructions TO TURN OFF GAS TO APPLIANCE found on Operating Instructions label on boiler or in Installation, Operation & Maintenance Manual. Verify all electrical power to boiler is turned off.

⚠ WARNING

Electrical shock hazard. Turn OFF electrical power supply at service panel.

2. Remove front jacket panel.

⚠ WARNING

Burn hazard. Verify heat exchanger, igniter, and flame sensor have cooled or use appropriate personal protection equipment.

3. Inspect combustion chamber through sight glass. Verify flame is not present. See Figure 1.
4. Turn off gas at manual main shutoff valve.
5. Remove optional Air Filter.
6. Disconnect display harness and remove user interface panel. See figure 1.
7. Disconnect Gas Valve Harness. Loosen retaining screw and disconnect harness from gas valve. See figure 2.
8. Disconnect gas valve left (inlet) flange. See figure 2.

Figure 1 - Sight Glass, User Interface, User Interface Panel

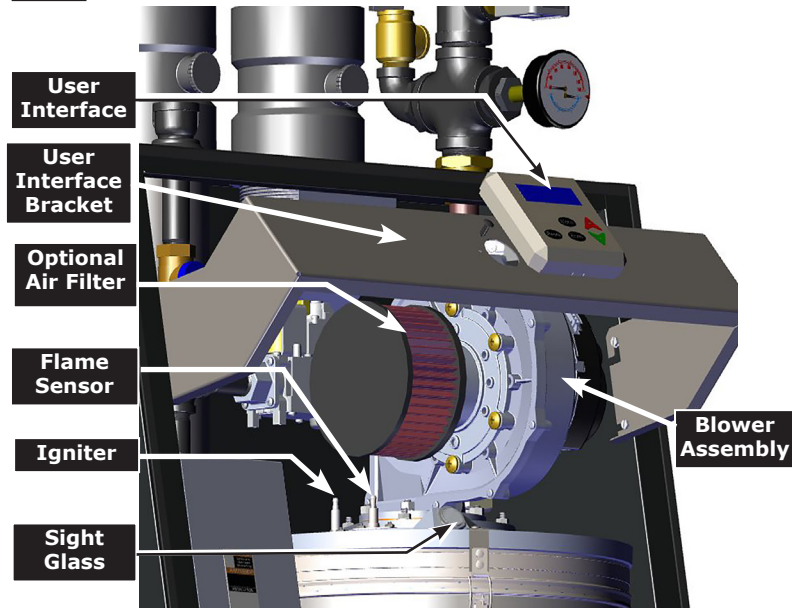
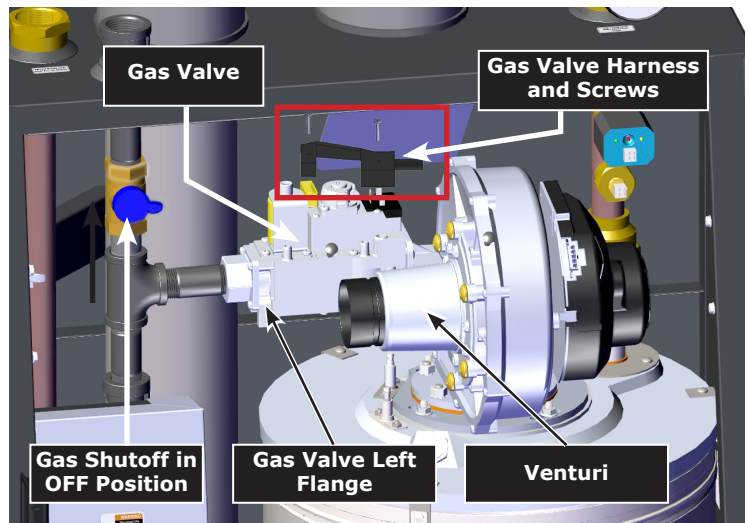


Figure 2 - Gas Valve, Gas Shutoff Valve, Gas Harness

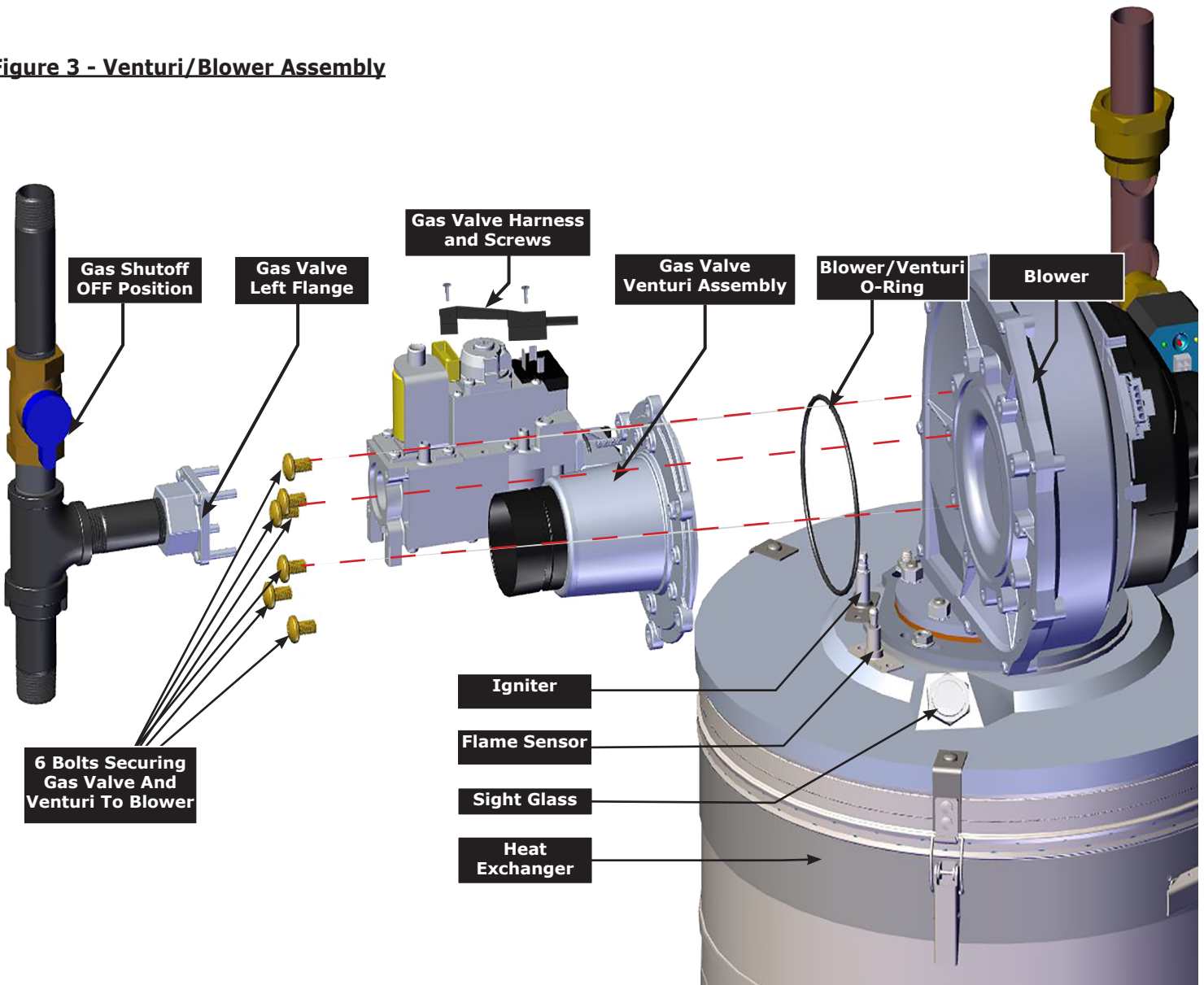


VENTURI REPLACEMENT KIT INSTRUCTIONS

9. Remove Venturi Assembly

- Disconnect igniter cable from igniter. Disconnect flame sensor cable from flame sensor and ground wire from stud.
- Remove gas valve and venturi assembly from blower using 6 bolts securing it to blower. See figure 3.
- Remove four (4) screws securing gas valve to Venturi.

Figure 3 - Venturi/Blower Assembly



VENTURI REPLACEMENT KIT INSTRUCTIONS

10. Install New Venturi. See figure 4.

- Install Gas Valve assembly on new Venturi.
- Install Gas Valve/Venturi assembly on blower. Use supplied new O-ring.

11. Install gas valve left flange onto gas valve.

12. Install Gas Valve Harness. Attach gas valve harness to gas valve. Secure with integral screw. See figure 2.

13. Reinstall display bracket. Re-connect display harness.

14. Gas Line Leak Test

- Turn on gas at manual main gas shutoff valve.
- Check for gas line leaks using gas detector, noncorrosive detection fluid, or other leak detection method acceptable to authority having jurisdiction. Correct leaks immediately.

⚠ DANGER

Fire hazard. Do not use matches, candles, open flames, or other methods providing ignition source. Failure to comply will result in death or serious injury.

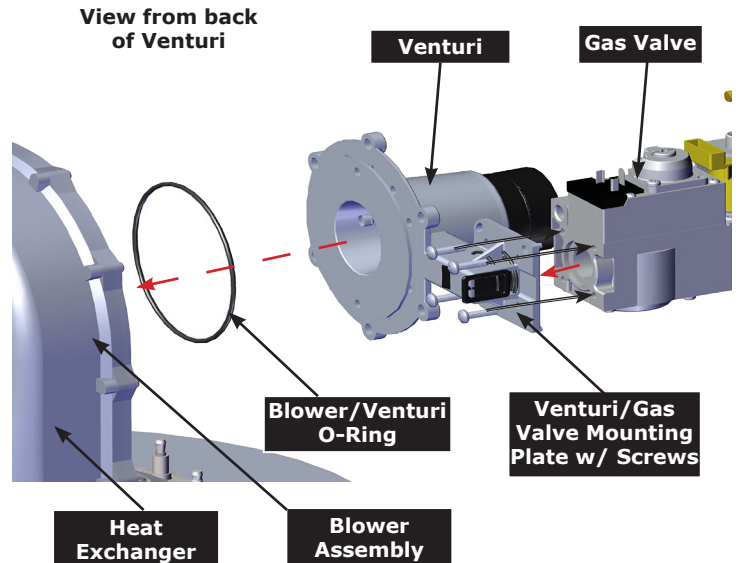
15. General Finish Instructions

- Resume operation using OPERATING INSTRUCTIONS found on Operating Instructions label on boiler or in Installation, Operation & Maintenance Manual.
- Verify proper operation by following START UP PROCEDURE in Installation, Operation & Maintenance Manual.
- Install front jacket panel.

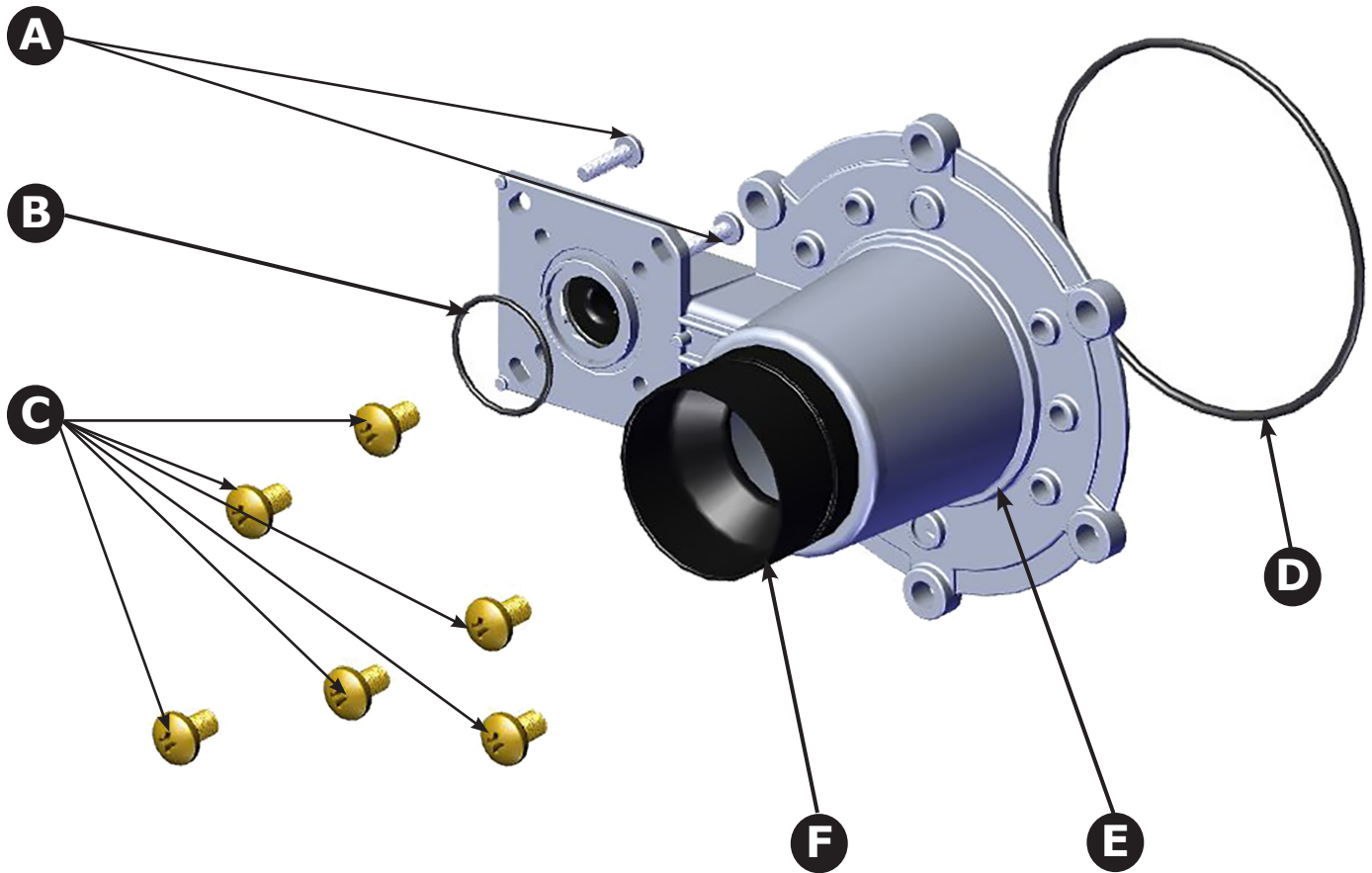
NOTICE

Use two (2) wrenches when tightening gas lines. Boiler components can be damaged if subjected to excessive torque.

Figure 4 - Venturi/Gas Valve Assembly



VENTURI REPLACEMENT KIT INSTRUCTIONS



399 VENTURI Kit # 550003098				
	ITEM	DESCRIPTION	PART #	QTY
Venturi Kit #550003098 includes all items listed	A	Screws to Gas Valve	-	4
	B	O-ring	-	1
	C	Screws to Blower	-	6
	D	O-ring to Blower	-	1
	E	Venturi	-	1
	F	Venturi Inlet	-	1
	*	Instructions	-	1

Check our website frequently for updates: www.ecrinternational.com