

COMBUSTION CHAMBER COVER REPLACEMENT KIT INSTRUCTIONS

Kit #550003257

FOR UCS & DMG 240 BOILER

Kit installation shall be completed by qualified agency.

⚠ WARNING

Fire, explosion, asphyxiation and electrical shock hazard. Improper installation could result in death or serious injury. Read this instruction and understand all requirements, including requirements of authority having jurisdiction, before beginning installation. Installation not complete until appliance operation verified per Installation, Operation & Maintenance Manual provided with boiler.

⚠ CAUTION

Laceration, burn hazard. Metal edges and parts may have sharp edges and/or may be hot. Use appropriate personal protection equipment to include safety glasses and gloves when installing or servicing this appliance. Failure to follow these instructions could result in minor or moderate injury.

1. Follow instructions TO TURN OFF GAS TO APPLIANCE found on Operating Instructions label on boiler or in Installation, Operation & Maintenance Manual. Verify all electrical power to boiler is turned off.

⚠ WARNING

Electrical shock hazard. Turn OFF electrical power supply at service panel.

2. Turn power and gas off to appliance.
3. Remove two (2) screws from front panel. Remove panel.

⚠ WARNING

Burn hazard. Verify unit has cooled before servicing. Use appropriate personal protection equipment.

4. Inspect combustion chamber through sight glass. Verify flame is not present. See Figure 1.
5. Press tabs and place control panel in down position. See Figure 2.

Figure 1 - 240 Heat Exchanger - Front of Boiler

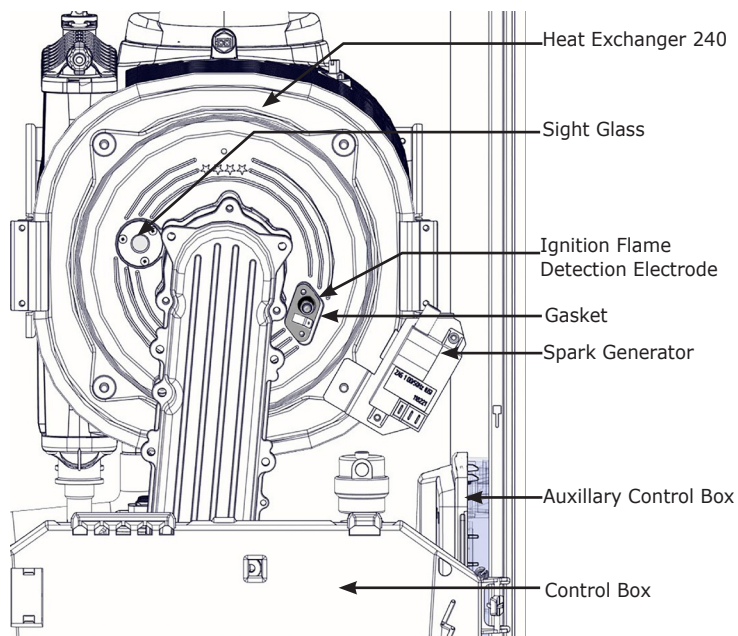
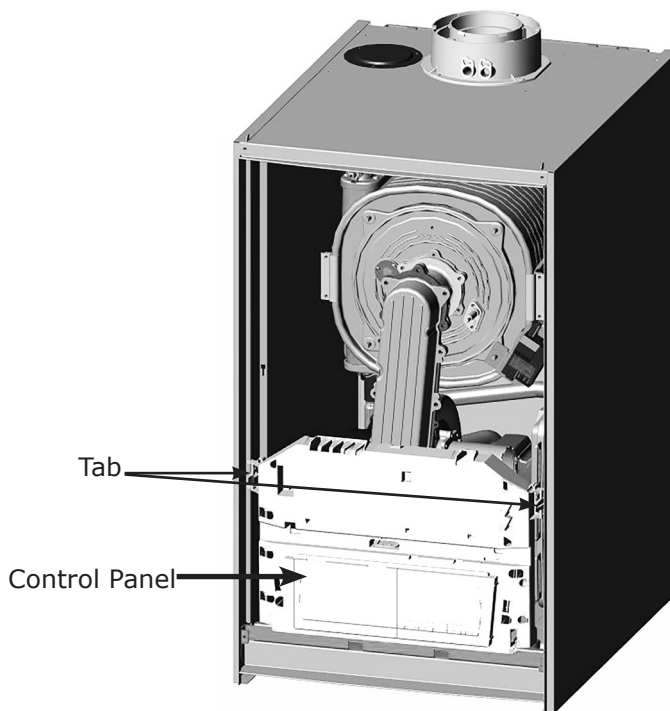


Figure 2 - Control Panel and Tab



COMBUSTION CHAMBER COVER REPLACEMENT KIT INSTRUCTIONS

6. Disconnect gas line nut securing gas line to air/gas venturi. See Figure 3.
7. Disconnect four (4) screws (1-brass, 3-silver) securing air gas mixer to combustion chamber and opening extension. See Figure 4.
8. Remove complete assembly (air gas mixer, air/gas venturi and blower/fan). Place on bottom panel of boiler.
9. Remove three (3) screws securing opening extension. Remove the extension. Note position of extension alignment screws for reinstallation.
10. Remove burner gasket. Remove screw securing burner into position, remove burner. See Figures 5 and 6.
11. Remove ignition wire and ground from ignition electrode. Remove two (2) screws securing ignition electrode into place on combustion chamber cover. Remove ignition electrode. See Figure 5.
12. Remove four (4) nuts securing combustion chamber cover in place. Note location of ignition electrode for replacement onto new cover.
13. Remove combustion chamber cover.
14. Install new combustion chamber cover and gasket. Position with sight glass to left and ignition electrode to right. Secure combustion chamber with four (4) removed nuts with lower right nut securing igniter in place. See Figure 5.
15. Place new ignition electrode gasket and electrode, secure with removed screws.
16. Connect ignition cable and ground to ignition electrode.
17. Install burner secure with removed screw. See Figure 6.
18. Install new burner gasket and reinstall opening extension.
19. Secure Heat Exchanger opening extension with one of three tabs at 6 o'clock ⌚. Orient and secure in place with previously removed screws. See Figure 4.
20. Reattach air gas mixer, gas valve and blower/fan. Place new gasket and secure with four (4) screws (1 brass and 3 silver). See Figure 4.

Figure 3 - Air Gas Mixer Assembly

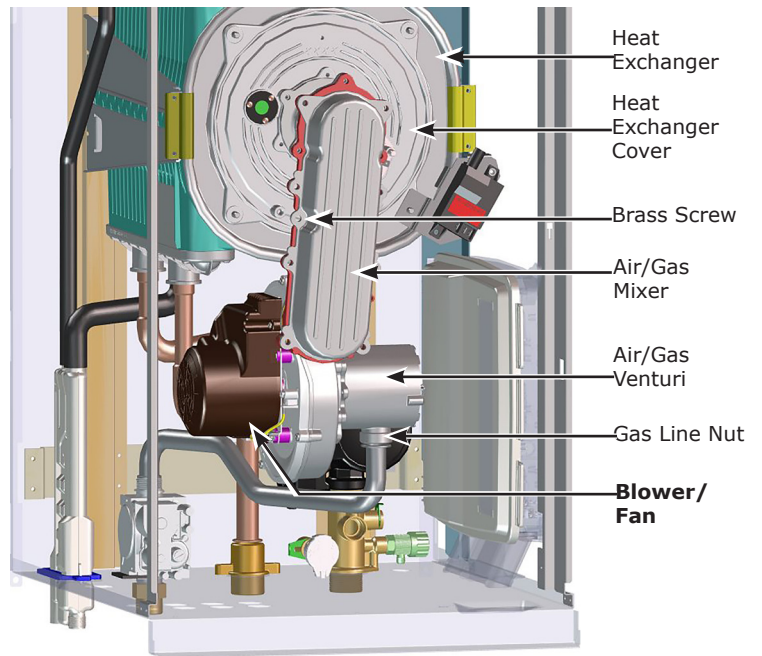
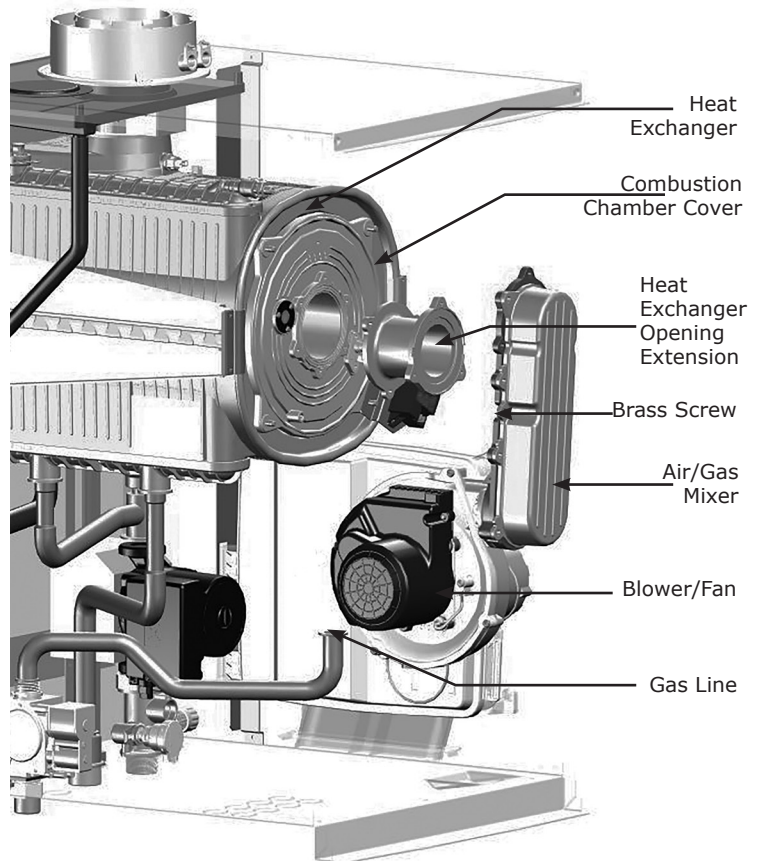
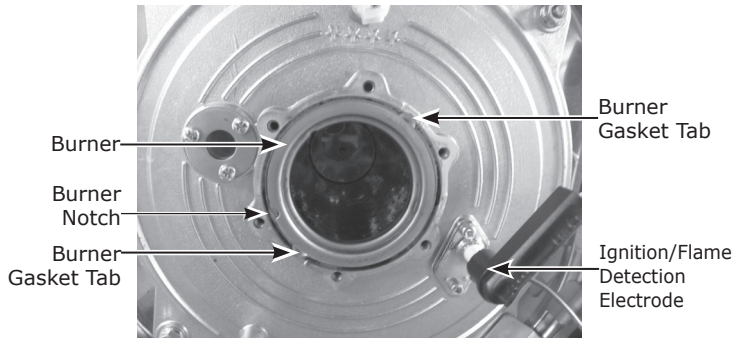


Figure 4 - Heat Exchanger Opening and Air/Gas Mixer



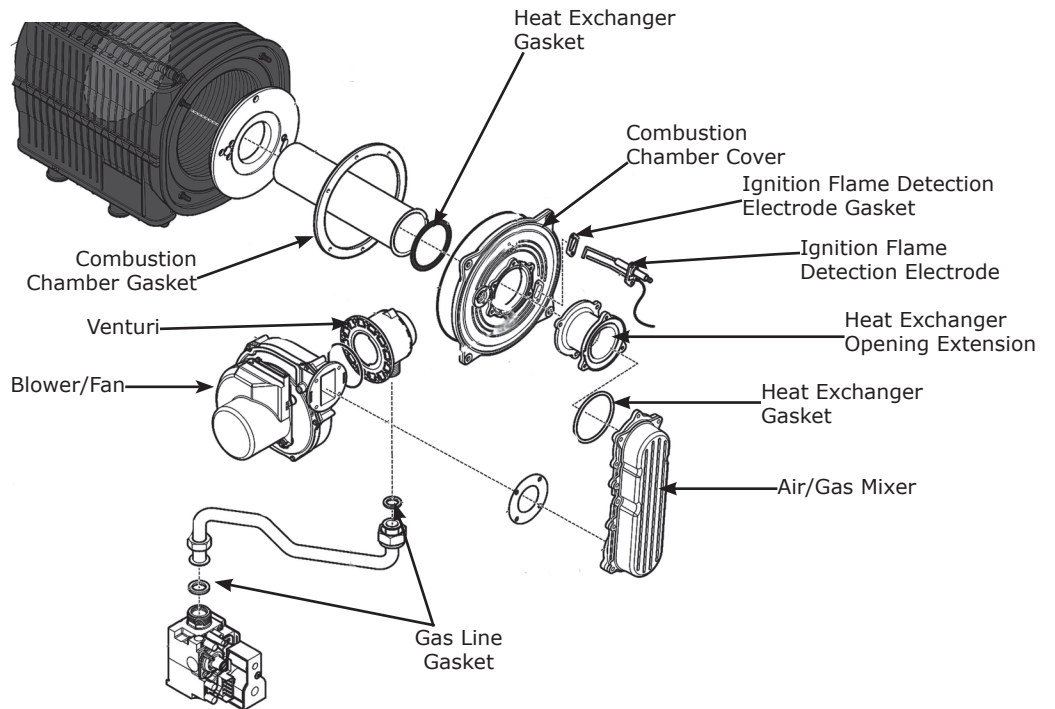
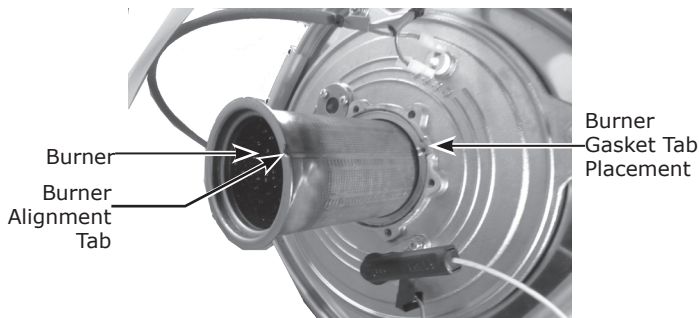
COMBUSTION CHAMBER COVER REPLACEMENT KIT INSTRUCTIONS

Figure 5 - Burner Gasket Tabs



21. Reattach gas line to gas valve using new gasket. Tighten nut securely.
22. Turn gas on. Check for leaks.
23. Position control panel in upward position. See Figure 2.
24. Turn Power on.
25. Resume operation using OPERATING INSTRUCTIONS found on Operating Instructions label on boiler or in Installation, Operation & Maintenance Manual.
26. Install front panel secure with screws.
27. Verify proper operation.

Figure 6- Burner Alignment and Removal



Combustion Chamber Cover Replacement Kit 550003257 -Includes:	
Description	Qty
COMBUSTION CHAMBER COVER w/Sight Glass & High Limit Switch	1
COMBUSTION CHAMBER GASKET	1
HEAT EXCHANGER GASKETS	2
ELECTRODE GASKET	1
GAS LINE VALVE GASKET	1
INSTRUCTIONS 240011706	1

Check our website frequently for updates: www.ecrinternational.com