

# COMBUSTION CHAMBER COVER REPLACEMENT KIT INSTRUCTIONS

## Kit #550003285

### FOR UCS & DMG 380 BOILER

Kit installation shall be completed by qualified agency.

#### **⚠ WARNING**

Fire, explosion, asphyxiation and electrical shock hazard. Improper installation could result in death or serious injury. Read this instruction and understand all requirements, including requirements of authority having jurisdiction, before beginning installation. Installation not complete until appliance operation verified per Installation, Operation & Maintenance Manual provided with boiler.

#### **⚠ CAUTION**

Laceration, burn hazard. Metal edges and parts may have sharp edges and/or may be hot. Use appropriate personal protection equipment to include safety glasses and gloves when installing or servicing this appliance. Failure to follow these instructions could result in minor or moderate injury.

1. Follow instructions TO TURN OFF GAS TO APPLIANCE found on Operating Instructions label on boiler or in Installation, Operation & Maintenance Manual. Verify all electrical power to boiler is turned off.

#### **⚠ WARNING**

Electrical shock hazard. Turn OFF electrical power supply at service panel.

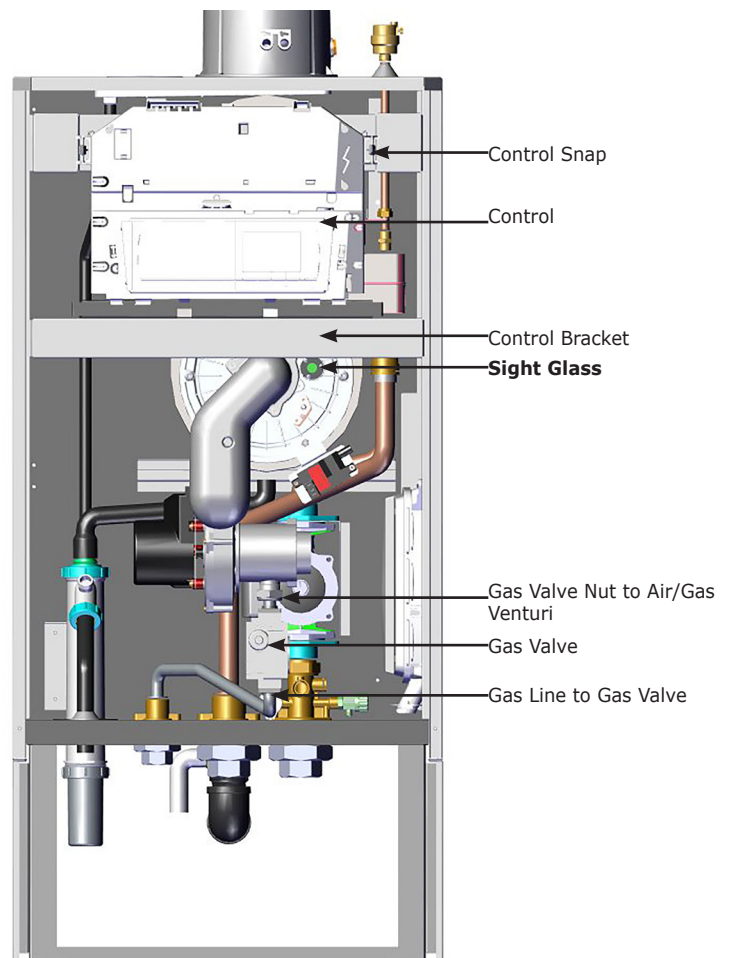
2. Turn power and gas off to appliance.
3. Remove two (2) screws from front panel. Remove panel.

#### **⚠ WARNING**

Burn hazard. Verify unit has cooled before servicing. Use appropriate personal protection equipment.

4. Inspect combustion chamber through sight glass. Verify flame is not present. See Figure 1.
5. Remove four (4) screws from control mounting bracket. Unsnap control in upper left and right corners. Place control assembly on boiler bottom panel.

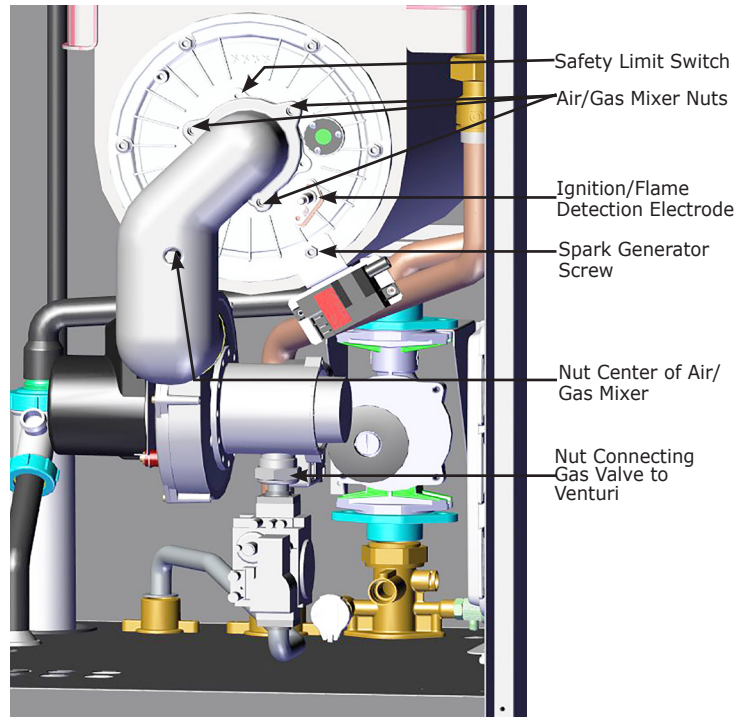
**Figure 1 - 380 Sight Glass - (Front of Boiler)**



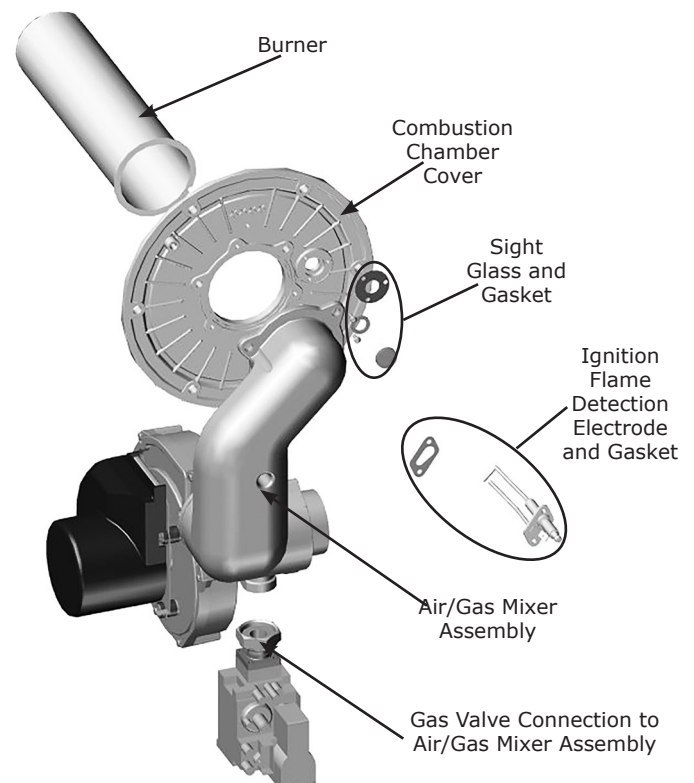
## COMBUSTION CHAMBER COVER REPLACEMENT KIT INSTRUCTIONS

6. Disconnect gas valve nut securing gas valve to Air/Gas Venturi. Remove gasket. See Figure 3.
7. Remove nut securing spark generator bracket to combustion chamber cover. Disconnect ground wire, unplug. Note location of bracket for reinstallation.
8. Disconnect two (2) wires from safety limit. See Figure 2.
9. Disconnect 3 and 5 wire harness from Blower/Fan assembly.
10. Disconnect four (4) nuts securing combustion chamber cover.
11. Support Blower/Fan and Air/Gas mixer assembly. Remove nut from center of Air/Gas mixer assembly. See Figure 2.
12. With care remove Blower/Fan, Air/Gas mixer and combustion cover from heat exchanger. See Figure 3.
13. Remove two (2) screws securing Ignition Flame Detection Electrode to combustion chamber cover. Remove gasket. See Figure 3.
14. Remove 3 bolts mounting Air/Gas Mixer to combustion chamber cover. Set Air/Gas Mixer aside.
15. Note location of notch on burner aligned with marking on cover. Remove burner and gasket. Set burner aside for reassembly. See Figure 4.
16. Install new combustion chamber cover and gasket. Position with sight glass and ignition electrode to right. See Figure 3.
17. Install burner with notch aligned with marking on combustion chamber cover, install new gasket. See Figure 5.
18. Reattach Air/Gas mixer with 3 bolts to combustion chamber cover.
19. Install ignition electrode with new gasket, secure with two (2) screws.
20. Install Blower/Fan, Air/Gas Mixer and cover assembly to heat exchanger. Secure with nut removed through Air/Gas mixer.
21. Secure combustion chamber cover with four (4) nuts, tighten all securely.
22. Reattach gas line to gas valve using new gasket. Tighten nut securely. See Figure 2.
23. Connect gas valve to Air/Gas Venturi using new gasket. Tighten nut securely.

**Figure 2 - Combustion Chamber Cover** (View front of boiler front panel removed)

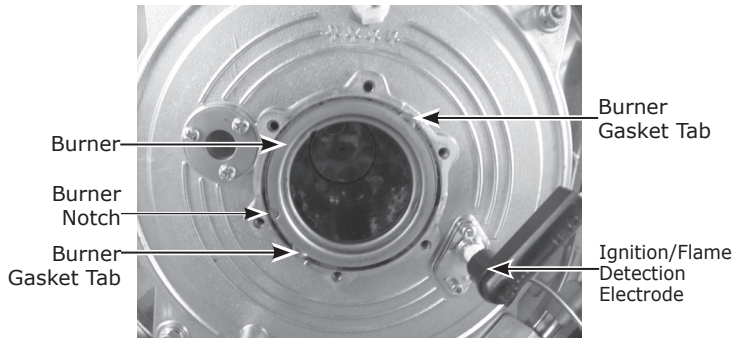


**Figure 3 - Combustion Chamber Cover with Air/Gas Mixer Assembly**



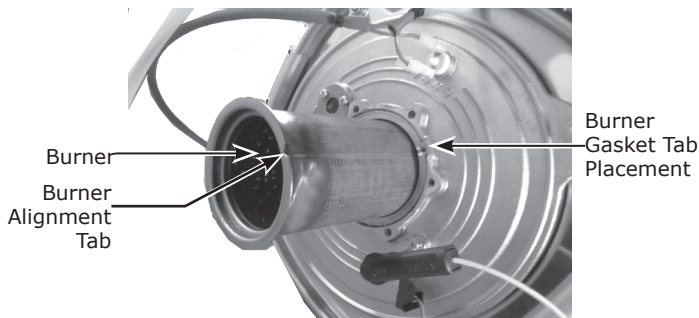
## COMBUSTION CHAMBER COVER REPLACEMENT KIT INSTRUCTIONS

**Figure 4 - Burner Gasket Tabs**

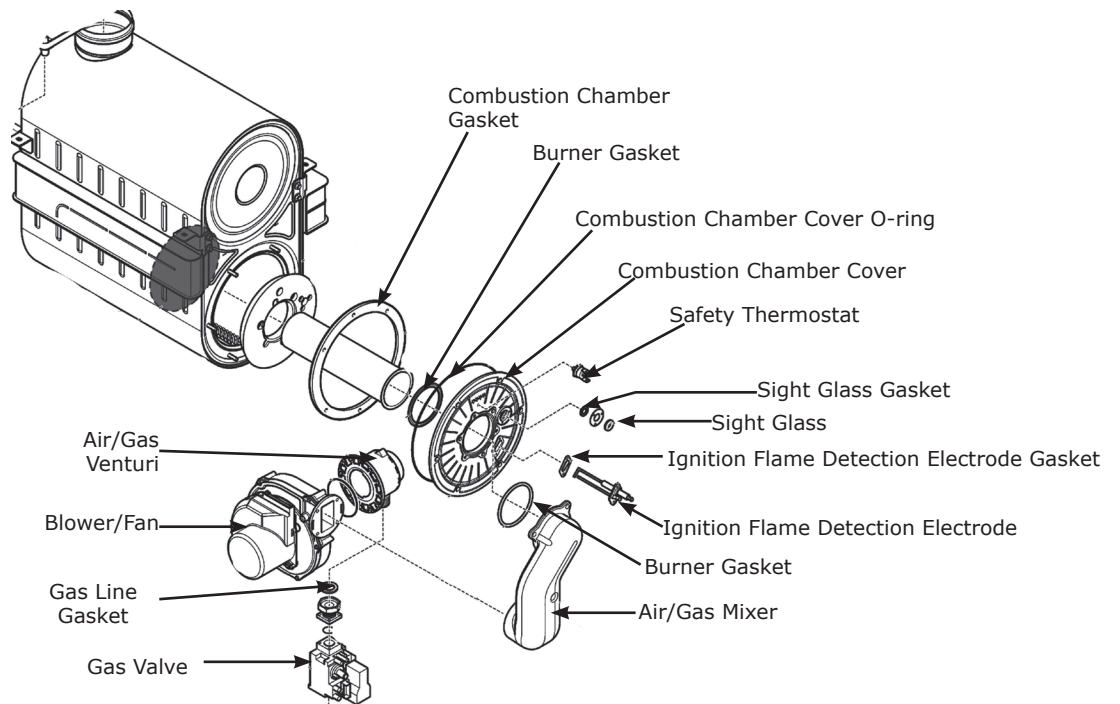


24. Connect 3 and 5 wire harness to fan motor.
25. Install spark generator bracket to combustion cover with nut, tighten. See Figure 2.
26. Connect ground wire and ignition electrode cable to ignition electrode. See Figure 2.
27. Connect two (2) wires to safety limit on combustion chamber cover. See Figure 2.
28. Secure control assembly support with four (4) removed screws. See Figure 1.
29. Turn power and gas on. Check for leaks.
30. Install front panel, secure with removed screws.

**Figure 5- Burner Alignment and Removal**



31. Resume operation using OPERATING INSTRUCTIONS found on Operating Instructions label on boiler or in Installation, Operation & Maintenance Manual.
32. Verify proper operation.



**Combustion Chamber Cover Replacement Kit  
550003285 -Includes:**

<b>Description</b>	<b>Qty</b>
COMBUSTION CHAMBER COVER w/Sight Glass & High Limit Switch	1
SIGHT GLASS GASKET	1
SIGHT GLASS	1
SAFETY THERMOSTAT 500°F/260°C	1
GASKET BURNER	1
GAS LINE VALVE GASKET	1
COMBUSTION CHAMBER GASKET	1
INSTRUCTIONS 240011720	1