

LWCO KIT INSTRUCTIONS

Kit #550003323

FOR UCS & DMG 240 & 380 BOILERS

Kit installation shall be completed by qualified agency.

⚠ WARNING

Fire, explosion, asphyxiation and electrical shock hazard. Improper installation could result in death or serious injury. Read this instruction and understand all requirements, including requirements of authority having jurisdiction, before beginning installation. Installation not complete until appliance operation verified per Installation, Operation & Maintenance Manual provided with boiler.

⚠ CAUTION

Laceration, burn hazard. Metal edges and parts may have sharp edges and/or may be hot. Use appropriate personal protection equipment to include safety glasses and gloves when installing or servicing this appliance. Failure to follow these instructions could result in minor or moderate injury.

Installation Procedure

1. Follow instructions TO TURN OFF GAS TO APPLIANCE found on Operating Instructions label on boiler or in Installation, Operation & Maintenance Manual. Verify all electrical power to boiler is turned off.
2. Allow boiler to finish post purge if firing when shutting down gas supply.

⚠ WARNING

Electrical shock hazard. Turn OFF electrical power supply at service panel.

3. Turn electric and gas off to appliance.
4. Remove two (2) screws from jacket cover. Lift jacket off.

⚠ WARNING

Burn hazard. Verify unit has cooled before servicing. Use appropriate personal protection equipment.

5. Inspect combustion chamber through sight glass. Verify flame is not present.
6. Press tabs and place control panel in down position.
7. Follow LWCO manufacturer installation instructions provided with LWCO and these instructions, install LWCO. See Figures 2 and 3.
8. Manufacturer recommends LWCO be installed close to boiler so length of supplied harness is adequate.

Kit # 550003323 Contents	
Harness LWCO Kit	1 ea
LWCO, Hydrolevel 550	1 ea
Kit Instructions - 240011782	1 ea

Figure 1 - Wire Harness - Supplied

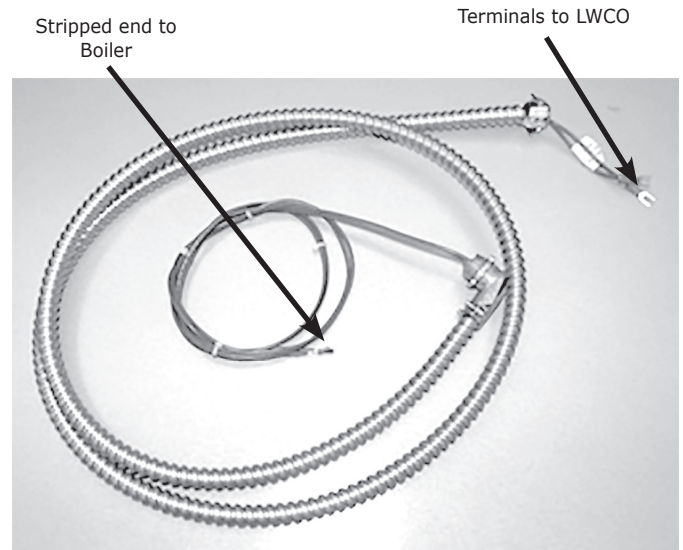
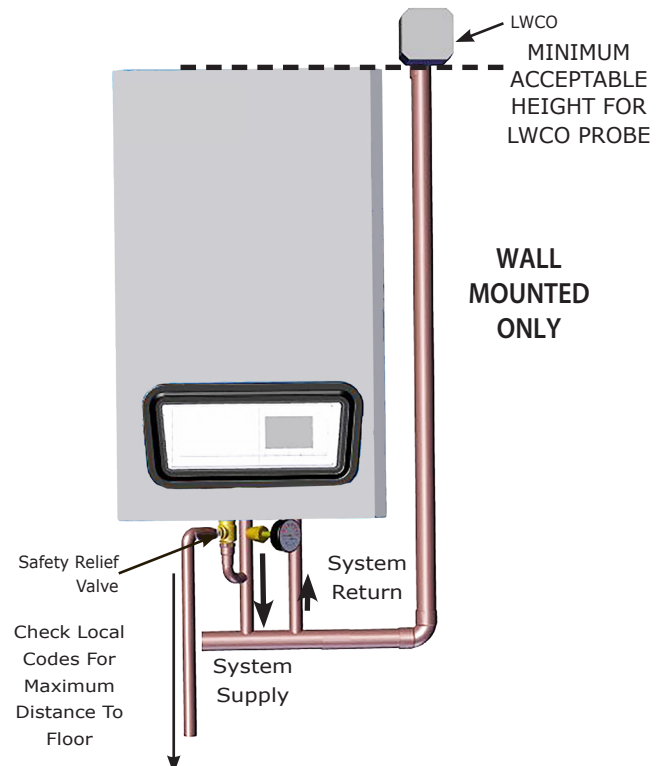


Figure 2 - Manufacturer Recommended LWCO PROBE Location - 240 Boilers



Illustrations are a depiction of the boiler for general location of parts and are subject to change without notice.

LWCO KIT INSTRUCTIONS

9. Install LWCO harness into LWCO:
 - a. Remove knockout and snap harness connector in place.
 - b. Connect two(2) fork terminals to terminal block locations P1 and P2.
10. Wire 120 VAC to LWCO. See Figure 4.
11. Route LWCO harness to bottom of boiler. Secure harness in available knockout.
12. Lift back panel of control panel. Locate BL (Block) terminal on right side of control board. Remove jumper wire. Route LWCO harness wires. Install BL terminal. See Figure 4.
13. Close back of control panel. Return control panel to upright position.
14. Install front jacket panel.
15. Resume operation using OPERATING INSTRUCTIONS found on Operating Instructions label on boiler or in Installation, Operation & Maintenance Manual.
16. Verify proper operation by following START UP PROCEDURE in Installation, Operation & Maintenance Manual.

Figure 3 - Manufacturer Recommended LWCO Probe Location - 380 Boilers (Viewed from Back of Boiler)

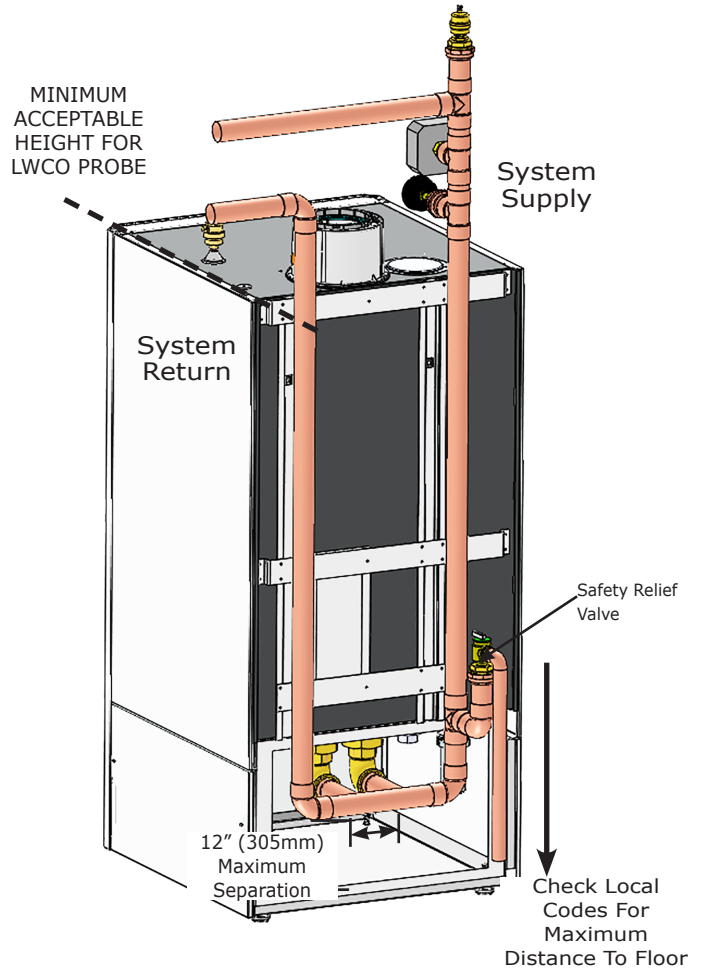
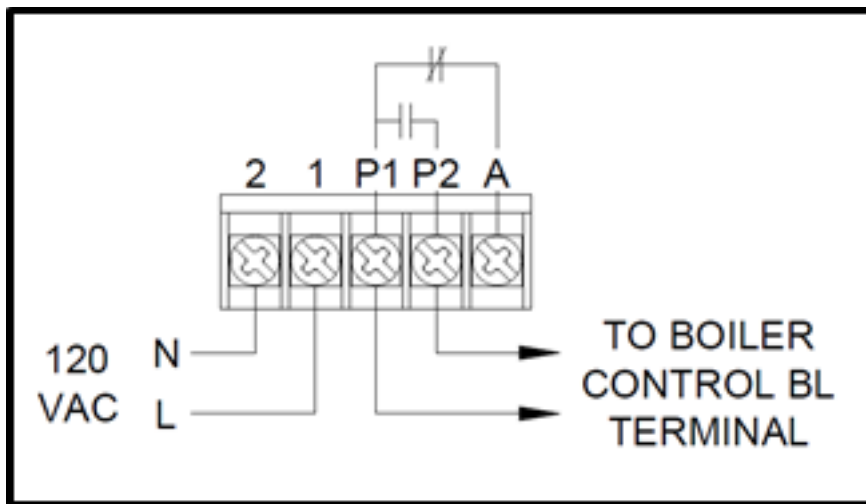
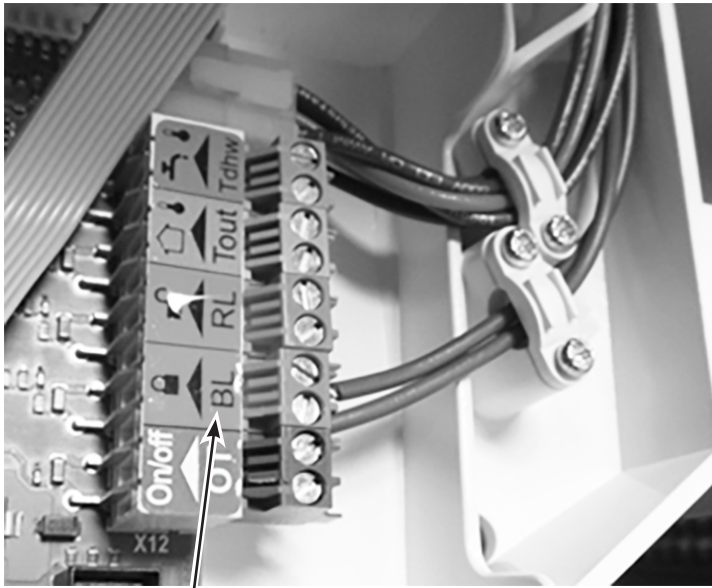


Figure 4 - LWCO Wire Diagram



LWCO KIT INSTRUCTIONS

Figure 5 - LWCO Control Connections



BL (Block)
Terminal

Operational Test Procedure:

Note Do not run boiler unattended until following procedure is complete to prevent nuisance tripping of boiler controls.

1. Before raising boiler water level above LWCO, turn power to boiler on. Set thermostat to call for heat. Amber "Low Water" LED will light on LWCO.
2. Fill Boiler with water. When water reaches LWCO yellow "Low water" LED will turn off. If Red "LOCKOUT" LED is illuminated press the RESET button on top of LWCO.
3. After completion of boiler air purge cycle verify burner fires.
4. Press test button on top of LWCO to simulate low water condition. Amber "Low Water" LED should illuminate and burner should shut down.

Check our website frequently for updates: www.ecrinternational.com