



# CONDENSATE PUMP

## Installation Instructions

### for CHP/CCP 09-48

Kit installation shall be completed by qualified agency.

#### **⚠ WARNING**

Fire, explosion, asphyxiation and electrical shock hazard. Improper installation could result in death or serious injury. Read this instruction and understand all requirements, including requirements of authority having jurisdiction, before beginning installation.

#### **⚠ WARNING**

Electrical shock hazard. Turn OFF electrical power supply at at both indoor and outdoor units.

#### **⚠ CAUTION**

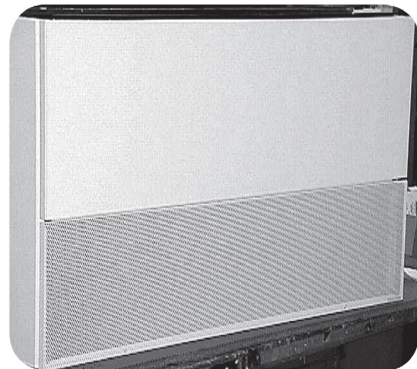
Laceration, burn hazard. Metal edges and parts may have sharp edges and/or may be hot. Use appropriate personal protection equipment to include safety glasses and gloves when installing or servicing this unit. Failure to follow these instructions could result in minor or moderate injury.

1. Disconnect power to unit.
2. Remove service and filter panels to expose the control box and unit components. See Figure 1 & 2.

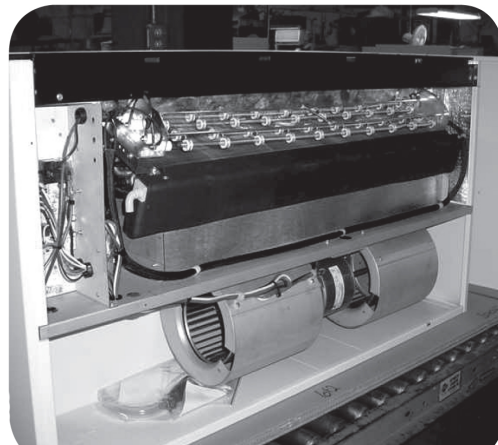
**Note** Unit's with factory installed Sauermann Pump, remove Sauermann Pump, all associated tubing, and wiring.

Kit 550003426 - Contents		
240011931	PUMP,COND,ASSY,09-24,115/208/230V	1
620000294	LBL,COND PUMP	1
108000010	TIE,WIRE,MOUNTING,PLASTIC	2
240001871	GRMT,RBR.WLC/H,WSP/WHP 09-36	1
109005349	PLT,MTG,EDC,CCP/CHP	1
201000001	SCR,8X3/8 B,HWS,SLT,SZN	4
207000004	CLAMP,CABLE 1/2" x 1/2" WIDE	2
207000003	TIE,WIRE,4",BLACK	3
207000010	TIE,WIRE,5.5",BLACK	3
207000006	TIE,WIRE,8",BLACK	2
240004653	HSE,SUPERTHANE,1/8"IDx1/4"OD	1.33ft
240011933	INST,REFCO,PUMP,COND,WCP/WHP	1

**Figure 1 - Remove Front Cover**



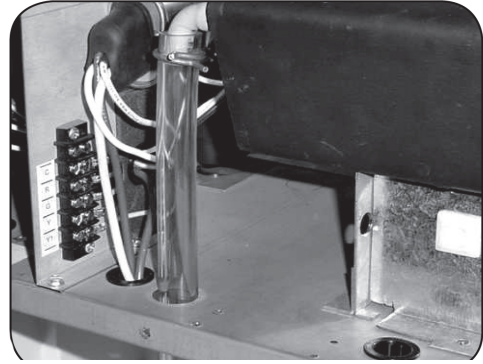
**Figure 2 - Control Box and Unit Components Exposed**



# CONDENSATE PUMP Installation for CHP/CCP 09-48

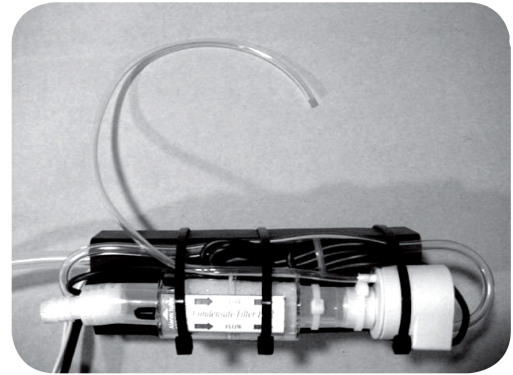
3. Remove factory installed condensate drain tube from drain pan. Do not discard the pipe clamp. Set aside for use in step 11. See Figure 3.

**Figure 3 - Condensate Pipe Clamp**



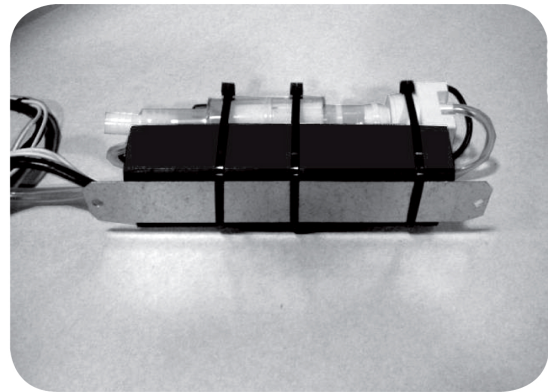
4. Remove the factory installed breather tube and guide wire included with the pump. Replace with 1/4" O.D x 16" long piece of included tubing. See Figure 4.

**Figure 4 - Breather Tube and Guide Wire**



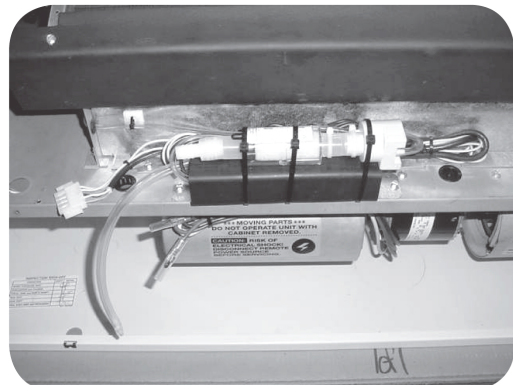
5. Insert pump mounting plate between pump body and wire ties on pump assembly. Center the plate on the pump body. See Figure 5.

**Figure 5 - Pump Mounting Plate**



6. Use (2) # 8 x 3/8 screws. Mount pump to blower deck. See Figure 6.

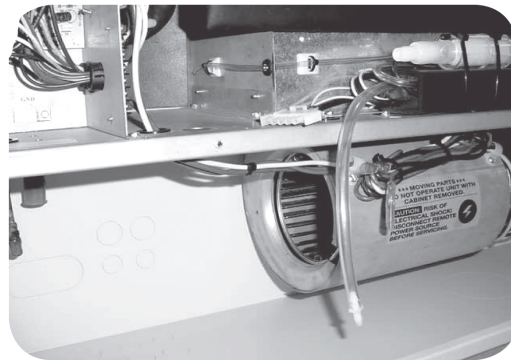
**Figure 6 - Pump Mounted to Blower**



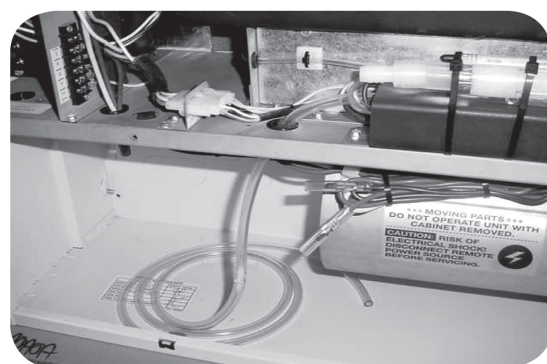
# CONDENSATE PUMP Installation for CHP/CCP 09-48

7. Use (3) large wire ties. Tie pump harness and tuck between pump body and block-off panel. See Figure 7.
8. Route breather tube through the grommet in the coil support panel. Use (2) small wire ties to secure tube to wire tie pads.
9. Plug harness from pump into mating connector on the unit. see Figure 8.
10. Route pump discharge tube through knockout hole in blower deck. Connect exterior condensate drain line.
11. From 3/4" included tubing, cut 10" long piece. Connect it from the unit's condensate drain pan to the pump inlet. Use pipe clamp from step 4. Secure tube to drain pan stub. See Figure 9.
12. Wire tie all lother loose ends
13. To ensure proper operation test the unit. Pour a small amount of water into the drain. Makes sure the pump cycles several times ane wter flows freely through all the hoses. Check to ensure there are no leaks.
14. Replace Service Panel and Filter Panel. See Figure 1.

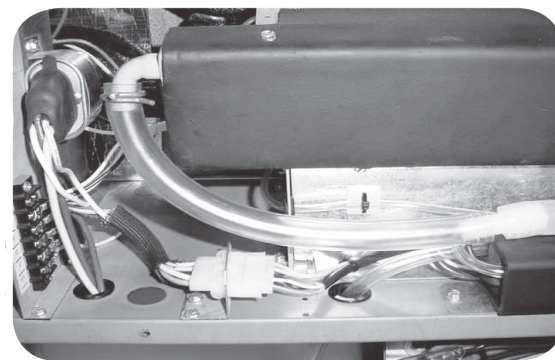
**Figure 7 - Pump DischargeTube**



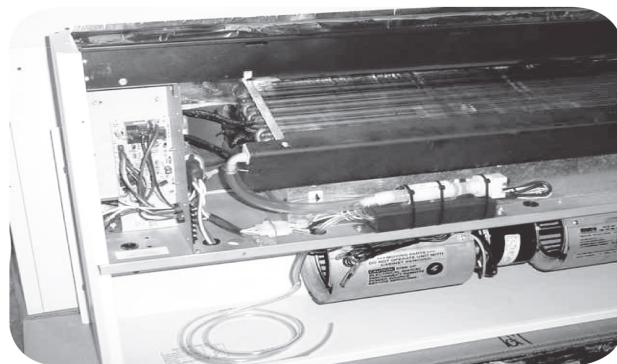
**Figure 8 - Discharge Tube Connected to Condensate Drain**



**Figure 9 - Condensate Drain Pan connected to Pump Inlet**



**Figure 10 - Completed Pump Installation**





**ECR** international  
EST. 1928  
A Family of Heating & Cooling Brands.

ECR International, Inc.  
2201 Dwyer Avenue • Utica, New York 13501  
Phone: 800.253.9364 • Web: [emiretroaire.com](http://emiretroaire.com)