

Trade Price Book Addendum

Effective 5/1/2017



Green Mountain Gas-Fired Boilers

Customer Service Technical Support

Phone: 800-325-5479
Fax: 315-724-9319/866-432-7329
www.greenmountainboilers.com

Corporate Sales

Phone: 877-386-5475
Fax: 716-366-4670

Literature

literature@ecrinternational.com

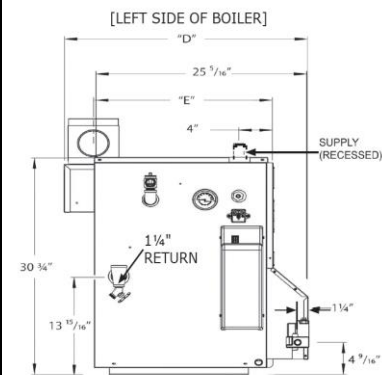
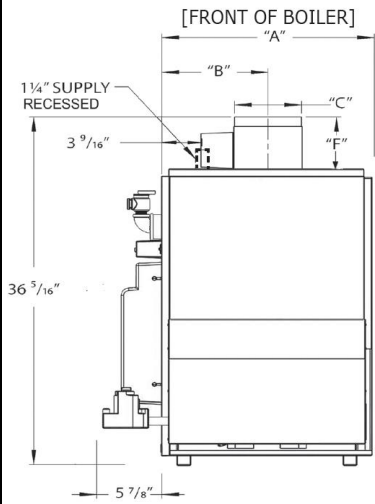
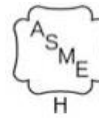


ECR international
EST. 1928

A Family of Heating & Cooling Brands.

P/N 240011133 Addendum

GMGW Series
 NATURAL OR PROPANE
 HOT WATER BOILER



General Information (See IOM for complete instructions)

Clearances	Combustible Materials (Required) (1)	
(1) Required distances measured from boiler.	Top	18" (457 mm)
	Front	Alcove*
	Flue Connector	6" (152 mm)
	Rear	8" (203 mm)
	Control Side	9" (229 mm)
	Other Side	3" (76 mm)

*Definition of Alcove is three sided space with no wall in front of boiler. ANSI standard for alcove is 18 inches from front of appliance to leading edge of side walls as shown in IOM.

Connections	Return/Supply Water	Gas In
GMGWB045FE through GMGWB195FE	1-1/4" NPT	1/2" NPT
GMGWB245FE & GMGWB295FE		3/4" NPT

Electrical 120 Volts AC, 60 hertz, 1 phase, Less than 12 amps (15 amp circuit recommended)

Water Content GMGWB045FE - 2.4 Gallons, GMGWB070FE/GMGWB096FE - 4.0 Gallons, GMGWB120FE/GMGWB145FE - 5.6 Gallons, GMGWB170FE/GMGWB195FE - 7.2 Gallons, GMGWB245FE - 8.8 Gallons, GMGWB295FE - 10.4 Gallons

Dimensions						
Model	A	B	C	D	E	F
GMGWB045FE	11-1/4"	5-5/8"	4"	27-1/8"	20-7/16"	4-15/16"
GMGWB070FE	15-1/8"	7"	5"	28-1/8"	20-15/16"	4-15/16"
GMGWB096FE	15-1/8"	7"	5"	28-1/8"	20-15/16"	4-15/16"
GMGWB120FE	19"	9-1/2"	6"	29-1/8"	21-7/16"	5-7/16"
GMGWB145FE	19"	9-1/2"	6"	29-1/8"	21-7/16"	5-7/16"
GMGWB170FE	22-7/8"	11-3/16"	7"	30-1/8"	21-15/16"	5-15/16"
GMGWB195FE	22-7/8"	11-3/16"	7"	30-1/8"	21-15/16"	5-15/16"
GMGWB245FE	26-3/4"	13-6/16"	8"	31-1/8"	22-7/16"	6-15/16"
GMGWB295FE	30-5/8"	15-5/16"	9"	32-1/8"	22-15/16"	8-15/16"

GMGW SERIES CONTINUED								
(NATURAL GAS - HONEYWELL WITH HYDROLEVEL LWCO - TACO SYSTEM PUMP)								
BOILER MODEL	ITEM NUMBER	TRADE PRICE	INPUT (MBH)	HTG. CAP. (MBH)	AHRI NET (MBH)	AFUE RATING %	NO. OF BRNS.	SHIP WGT.
GMGWB045FE	15B204503710204	\$1,811	45	37	32	82.0%	1	255
GMGWB070FE	15B307003710204	\$1,932	70	57	50	82.0%	2	305
GMGWB096FE	15B309603710204	\$2,038	96	79	69	82.0%	2	310
GMGWB120FE	15B412003710204	\$2,242	120	98	85	82.0%	3	355
GMGWB145FE	15B414503710204	\$2,383	145	119	103	82.0%	3	360
GMGWB170FE	15B517003710204	\$2,678	170	140	122	82.0%	4	420
GMGWB195FE	15B519503710204	\$2,968	195	160	139	82.0%	4	425
GMGWB245FE	15B624503710204	\$3,242	245	201	174	82.0%	5	495
GMGWB295FE	15B729503710204	\$3,458	295	242	210	82.0%	6	555
(USE PARTS MULTIPLIER FOR ALL OF THE FOLLOWING)					PN	TRADE		
GMGWB045FE NATURAL GAS TO LP GAS CONVERSION KIT					550001279	\$46		
GMGWB070FE NATURAL GAS TO LP GAS CONVERSION KIT					550001280	\$46		
GMGWB096FE NATURAL GAS TO LP GAS CONVERSION KIT					550001281	\$46		
GMGWB120FE NATURAL GAS TO LP GAS CONVERSION KIT					550001282	\$54		
GMGWB145FE NATURAL GAS TO LP GAS CONVERSION KIT					550001283	\$54		
GMGWB170FE NATURAL GAS TO LP GAS CONVERSION KIT					550001282	\$54		
GMGWB195FE NATURAL GAS TO LP GAS CONVERSION KIT					550001285	\$51		
GMGWB245FE NATURAL GAS TO LP GAS CONVERSION KIT					550001286	\$51		
GMGWB295FE NATURAL GAS TO LP GAS CONVERSION KIT					550001287	\$60		
GMGWB045FE LP GAS TO NATURAL GAS CONVERSION KIT					550001270	\$49		
GMGWB070FE LP GAS TO NATURAL GAS CONVERSION KIT					550001271	\$49		
GMGWB096FE LP GAS TO NATURAL GAS CONVERSION KIT					550001272	\$49		
GMGWB120FE LP GAS TO NATURAL GAS CONVERSION KIT					550001273	\$51		
GMGWB145FE LP GAS TO NATURAL GAS CONVERSION KIT					550001274	\$51		
GMGWB170FE LP GAS TO NATURAL GAS CONVERSION KIT					550001273	\$51		
GMGWB195FE LP GAS TO NATURAL GAS CONVERSION KIT					550001276	\$51		
GMGWB245FE LP GAS TO NATURAL GAS CONVERSION KIT					550001277	\$58		
GMGWB295FE LP GAS TO NATURAL GAS CONVERSION KIT					550001278	\$58		
COMBUSTIBLE FLOOR PLATE FOR ALL CAPACITIES					14614032	\$96		
GMGW SERIES STANDARD EQUIPMENT								
<u>STANDARD EQUIPMENT:</u>								
<ul style="list-style-type: none"> - Boiler Control Module: Honeywell Control with digital display and diagnostics, monitors water temperature and delays burner from starting until the residual heat energy within the boiler is consumed. Features a built-in low water cut-off (LWCO) to protect the boiler from potentially dangerous low water conditions. - Heat Exchanger: Cast Iron Sections with Cast Iron Push Nipples. - Combustion: Main Gas Burners, Combination 24 Volt Gas Control (Includes: Automatic Gas Valve, Gas Pressure Regulator, Intermittent Pilot, Safety Shutoff, Pilot Flow Adjustment, Pilot Filter) - Safety: Spill Switch, Roll-Out Switch, Automatic Vent Damper. - Other: Insulated Boiler Jacket, Integral Draft Diverter, Combination Temperature/Pressure Gauge, Circulator Pump, 3/4" Drain Valve, 30lb. ASME Relief Valve. 								