

# Trade Price Book Addendum

Effective 5/1/2017



## Customer Service Technical Support

Phone: 800-325-5479  
Fax: 315-724-9319/866-432-7329  
[www.pennco boilers.com](http://www.pennco boilers.com)

## Corporate Sales

Phone: 877-386-5475  
Fax: 716-366-4670

## Literature

[literature@ecrinternational.com](mailto:literature@ecrinternational.com)

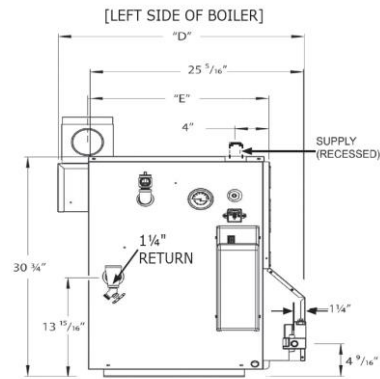
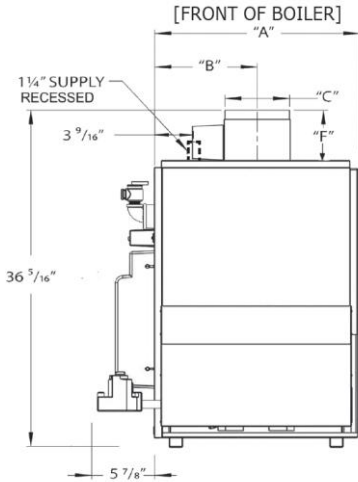
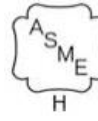


**ECR** international  
EST. 1928

A Family of Heating & Cooling Brands.

P/N 240004966 Addendum

**15B SERIES II**  
 NATURAL OR PROPANE  
 HOT WATER BOILER



**General Information** (See IOM for complete instructions)

Clearances		Combustible Materials (Required) (1)
(1) Required distances measured from boiler.	Top	18" (457 mm)
	Front	Alcove*
	Flue Connector	6" (152 mm)
	Rear	8" (203 mm)
	Control Side	9" (229 mm)
	Other Side	3" (76 mm)

\*Definition of Alcove is three sided space with no wall in front of boiler. ANSI standard for alcove is 18 inches from front of appliance to leading edge of side walls as shown in IOM.

Connections	Return/Supply Water	Gas In
15B045, 15B070, 15B096, 15B120, 15B145, 15B170, 15B195	1-1/4" NPT	1/2" NPT
15B245 & 15B295		3/4" NPT

**Electrical** 120 Volts AC, 60 hertz, 1 phase, Less than 12 amps (15 amp circuit recommended)

**Water Content** 15B045 - 2.4 Gallons, 15B070/15B096 - 4.0 Gallons, 15B120/15B145 - 5.6 Gallons, 15B170/15B195 - 7.2 Gallons, 15B245 - 8.8 Gallons, 15B295 - 10.4 Gallons

Dimensions						
Model	A	B	C	D	E	F
15B045FE	11-1/4"	5-5/8"	4"	27-1/8"	20-7/16"	4-15/16"
15B070FE	15-1/8"	7"	5"	28-1/8"	20-15/16"	4-15/16"
15B096FE	15-1/8"	7"	5"	28-1/8"	20-15/16"	4-15/16"
15B120FE	19"	9-1/2"	6"	29-1/8"	21-7/16"	5-7/16"
15B145FE	19"	9-1/2"	6"	29-1/8"	21-7/16"	5-7/16"
15B170FE	22-7/8"	11-3/16"	7"	30-1/8"	21-15/16"	5-15/16"
15B195FE	22-7/8"	11-3/16"	7"	30-1/8"	21-15/16"	5-15/16"
15B245FE	26-3/4"	13-6/16"	8"	31-1/8"	22-7/16"	6-15/16"
15B295FE	30-5/8"	15-5/16"	9"	32-1/8"	22-15/16"	8-15/16"

**15B SERIES II CONTINUED**

**(NATURAL GAS - HONEYWELL WITH HYDROLEVEL LWCO CONTROL - LESS SYSTEM PUMP)**

BOILER MODEL	ITEM NUMBER	TRADE PRICE	INPUT (MBH)	HTG. CAP. (MBH)	AHRI NET (MBH)	AFUE RATING %	NO. OF BRNS.	SHIP WGT.
15B045FE	15B204503700207	\$1,742	45	37	32	82.0%	1	255
15B070FE	15B307003700207	\$1,864	70	57	50	82.0%	2	305
15B096FE	15B309603700207	\$1,970	96	79	69	82.0%	2	310
15B120FE	15B412003700207	\$2,174	120	98	85	82.0%	3	355
15B145FE	15B414503700207	\$2,314	145	119	103	82.0%	3	360
15B170FE	15B517003700207	\$2,609	170	140	122	82.0%	4	420
15B195FE	15B519503700207	\$2,902	195	160	139	82.0%	4	425
15B245FE	15B624503700207	\$3,173	245	201	174	82.0%	5	495
15B295FE	15B729503700207	\$3,389	295	242	210	82.0%	6	555

**(NATURAL GAS - HONEYWELL WITH HYDROLEVEL LWCO CONTROL - TACO SYSTEM PUMP)**

BOILER MODEL	ITEM NUMBER	TRADE PRICE	INPUT (MBH)	HTG. CAP. (MBH)	AHRI NET (MBH)	AFUE RATING %	NO. OF BRNS.	SHIP WGT.
15B045FE	15B204503710207	\$1,811	45	37	32	82.0%	1	255
15B070FE	15B307003710207	\$1,932	70	57	50	82.0%	2	305
15B096FE	15B309603710207	\$2,038	96	79	69	82.0%	2	310
15B120FE	15B412003710207	\$2,242	120	98	85	82.0%	3	355
15B145FE	15B414503710207	\$2,383	145	119	103	82.0%	3	360
15B170FE	15B517003710207	\$2,678	170	140	122	82.0%	4	420
15B195FE	15B519503710207	\$2,968	195	160	139	82.0%	4	425
15B245FE	15B624503710207	\$3,242	245	201	174	82.0%	5	495
15B295FE	15B729503710207	\$3,458	295	242	210	82.0%	6	555

**(NATURAL GAS - HONEYWELL WITH HYDROLEVEL LWCO CONTROL - GRUNDFOS SYSTEM PUMP)**

BOILER MODEL	ITEM NUMBER	TRADE PRICE	INPUT (MBH)	HTG. CAP. (MBH)	AHRI NET (MBH)	AFUE RATING %	NO. OF BRNS.	SHIP WGT.
15B045FE	15B204503720207	\$1,811	45	37	32	82.0%	1	255
15B070FE	15B307003720207	\$1,932	70	57	50	82.0%	2	305
15B096FE	15B309603720207	\$2,038	96	79	69	82.0%	2	310
15B120FE	15B412003720207	\$2,242	120	98	85	82.0%	3	355
15B145FE	15B414503720207	\$2,383	145	119	103	82.0%	3	360
15B170FE	15B517003720207	\$2,678	170	140	122	82.0%	4	420
15B195FE	15B519503720207	\$2,968	195	160	139	82.0%	4	425
15B245FE	15B624503720207	\$3,242	245	201	174	82.0%	5	495
15B295FE	15B729503720207	\$3,458	295	242	210	82.0%	6	555

**(LP GAS - HONEYWELL WITH HYDROLEVEL LWCO CONTROL - LESS SYSTEM PUMP)**

BOILER MODEL	ITEM NUMBER	TRADE PRICE	INPUT (MBH)	HTG. CAP. (MBH)	AHRI NET (MBH)	AFUE RATING %	NO. OF BRNS.	SHIP WGT.
15B045FE	15B204513700207	\$1,790	45	37	32	82.0%	1	255
15B070FE	15B307013700207	\$1,911	70	57	50	82.0%	2	305
15B096FE	15B309613700207	\$2,018	96	79	69	82.0%	2	310
15B120FE	15B412013700207	\$2,188	120	98	85	82.0%	3	355
15B145FE	15B414513700207	\$2,362	145	119	103	82.0%	3	360
15B170FE	15B517013700207	\$2,657	170	140	122	82.0%	4	420
15B195FE	15B519513700207	\$2,948	195	160	139	82.0%	4	425
15B245FE	15B624513700207	\$3,221	245	201	174	82.0%	5	495
15B295FE	15B729513700207	\$3,389	295	242	210	82.0%	6	555

<b>(LP GAS - HONEYWELL WITH HYDROLEVEL LWCO CONTROL - TACO SYSTEM PUMP)</b>								
<b>BOILER MODEL</b>	<b>ITEM NUMBER</b>	<b>TRADE PRICE</b>	<b>INPUT (MBH)</b>	<b>HTG. CAP. (MBH)</b>	<b>AHRI NET (MBH)</b>	<b>AFUE RATING %</b>	<b>NO. OF BRNS.</b>	<b>SHIP WGT.</b>
15B045FE	15B204513710207	\$1,858	45	37	32	82.0%	1	255
15B070FE	15B307013710207	\$2,016	70	57	50	82.0%	2	305
15B096FE	15B309613710207	\$2,086	96	79	69	82.0%	2	310
15B120FE	15B412013710207	\$2,290	120	98	85	82.0%	3	355
15B145FE	15B414513710207	\$2,431	145	119	103	82.0%	3	360
15B170FE	15B517013710207	\$2,725	170	140	122	82.0%	4	420
15B195FE	15B519513710207	\$3,016	195	160	139	82.0%	4	425
15B245FE	15B624513710207	\$3,290	245	201	174	82.0%	5	495
15B295FE	15B729513710207	\$3,506	295	242	210	82.0%	6	555

<b>(LP GAS - HONEYWELL WITH HYDROLEVEL LWCO CONTROL - GRUNDFOS SYSTEM PUMP)</b>								
<b>BOILER MODEL</b>	<b>ITEM NUMBER</b>	<b>TRADE PRICE</b>	<b>INPUT (MBH)</b>	<b>HTG. CAP. (MBH)</b>	<b>AHRI NET (MBH)</b>	<b>AFUE RATING %</b>	<b>NO. OF BRNS.</b>	<b>SHIP WGT.</b>
15B045FE	15B204513720207	\$1,858	45	37	32	82.0%	1	255
15B070FE	15B307013720207	\$2,016	70	57	50	82.0%	2	305
15B096FE	15B309613720207	\$2,086	96	79	69	82.0%	2	310
15B120FE	15B412013720207	\$2,290	120	98	85	82.0%	3	355
15B145FE	15B414513720207	\$2,431	145	119	103	82.0%	3	360
15B170FE	15B517013720207	\$2,725	170	140	122	82.0%	4	420
15B195FE	15B519513720207	\$3,016	195	160	139	82.0%	4	425
15B245FE	15B624513720207	\$3,290	245	201	174	82.0%	5	495
15B295FE	15B729513720207	\$3,506	295	242	210	82.0%	6	555

<b>(USE PARTS MULTIPLIER FOR ALL OF THE FOLLOWING)</b>		<b>PN</b>	<b>TRADE</b>
15B045FE NATURAL GAS TO LP GAS CONVERSION KIT		550001279	\$46
15B070FE NATURAL GAS TO LP GAS CONVERSION KIT		550001280	\$46
15B096FE NATURAL GAS TO LP GAS CONVERSION KIT		550001281	\$46
15B120FE NATURAL GAS TO LP GAS CONVERSION KIT		550001282	\$54
15B145FE NATURAL GAS TO LP GAS CONVERSION KIT		550001283	\$54
15B170FE NATURAL GAS TO LP GAS CONVERSION KIT		550001282	\$54
15B195FE NATURAL GAS TO LP GAS CONVERSION KIT		550001285	\$51
15B245FE NATURAL GAS TO LP GAS CONVERSION KIT		550001286	\$51
15B295FE NATURAL GAS TO LP GAS CONVERSION KIT		550001287	\$60
15B045FE LP GAS TO NATURAL GAS CONVERSION KIT		550001270	\$49
15B070FE LP GAS TO NATURAL GAS CONVERSION KIT		550001271	\$49
15B096FE LP GAS TO NATURAL GAS CONVERSION KIT		550001272	\$49
15B120FE LP GAS TO NATURAL GAS CONVERSION KIT		550001273	\$51
15B145FE LP GAS TO NATURAL GAS CONVERSION KIT		550001274	\$51
15B170FE LP GAS TO NATURAL GAS CONVERSION KIT		550001273	\$51
15B195FE LP GAS TO NATURAL GAS CONVERSION KIT		550001276	\$51
15B245FE LP GAS TO NATURAL GAS CONVERSION KIT		550001277	\$58
15B295FE LP GAS TO NATURAL GAS CONVERSION KIT		550001278	\$58
COMBUSTIBLE FLOOR PLATE FOR ALL CAPACITIES		14614032	\$96

**15B SERIES II STANDARD EQUIPMENT**

**STANDARD EQUIPMENT:**

- Boiler Control Module: Honeywell Control with digital display and diagnostics, monitors water temperature and delays burner from starting until the residual heat energy within the boiler is consumed. Features a built-in low water cut-off (LWCO) to protect the boiler from potentially dangerous low water conditions.
- Heat Exchanger: Cast Iron Sections with Cast Iron Push Nipples.
- Combustion: Main Gas Burners, Combination 24 Volt Gas Control (Includes: Automatic Gas Valve, Gas Pressure Regulator, Intermittent Pilot, Safety Shutoff, Pilot Flow Adjustment, Pilot Filter)
- Safety: Spill Switch, Roll-Out Switch, Automatic Vent Damper.
- Other: Insulated Boiler Jacket, Integral Draft Diverter, Combination Temperature/Pressure Gauge,