

Trade Price Book - 815

Effective 8/24/15



Utica Heating Gas & Oil Fired Boilers

**Customer Service
Technical Support**
Phone: 800-325-5479
Fax: 315-724-9319/866-432-7329
www.greenmountainboilers.com

Corporate Sales
Phone: 877-386-5475
Fax: 716-366-4670

Literature
literature@ecrinternational.com



P/N 240011138 815 Rev. A

TABLE OF CONTENTS

Terms & RMA Policy	3-4
Gas Cast Iron Water Boilers UH15B Series	5-7
Oil Cast Iron Water Boilers UHKW Series	8-9

TERMS & CONDITIONS OF SALE - GENERAL TERMS

PRICES & SPECIFICATIONS: All pricing and specifications subject to change without notice. The prices herein supersede all prior quotations.

PAYMENT TERMS: Net 30 Days

ORDERS: Orders will be accepted on the basis of prices in effect at the time the order is received. No order or contract will become an obligation on our part until accepted by the General Sales Department. ECR International shall not be liable for any delay or failure in the delivery or shipment of goods due to any cause or causes beyond its control.

TAXES: Add to the prices and terms quoted any manufacturers' or sales tax payable on the transaction under any effective statute.

SHIPMENT

TRUCK LOADS: \$40,000 Net Order Value - Freight Prepaid. Indirect Water Heaters and Commercial Boiler lines can be added to any residential order for freight purposes. Authorized Distributors can combine Argo, Airco, Dunkirk, EMI, Green Mountain, Olsen, Pennco and Utica and on one purchase order to earn free freight.

Stop off charges of \$150 will apply to stop off locations within 100 miles of final destination. Please call for pricing for stop off special handling for a location further than 100 miles or for special handling pricing for services such as lift gate, unloading assistance, etc.

LESS THAN TRUCKLOAD SHIPMENT: F.O.B. ECR INTERNATIONAL - FACTORY OR WAREHOUSE

ORDER INFORMATION CHECKLIST

The following information must be included on equipment or parts orders to insure proper shipment & invoicing:

- 1) Purchase Order Number
- 2) Bill To Address
- 3) Ship To Address
- 4) Method of Shipment (i.e. - trailer load, UPS, etc.)
- 5) Requested Ship Date
- 6) Special Instructions (i.e. - "Carrier to call...")
- 7) Pricing
- 8) Product Description (i.e. - Model, Size, Series, etc.)
- 9) Fuel Characteristics (i.e. Oil, Natural Gas, Propane)
- 10) Electrical Characteristics (i.e. - Operating Voltage, Cycles, Phases, etc.)
- 11) Non-Standard Equipment (Indicate "Optional" when substituted for standard equipment at extra cost listed. added to standard equipment).
- 12) Kits or Parts (Orders for kits or parts must indicate equipment size and series).
- 13) Send orders to:

**E-Mail: ecrorderentry@ecrinternational.com
Fax: 315-724-9319**

- 14) Please note the following Remit To Address:

**ECR International, Inc.
P.O. Box 8000 Department 039
Buffalo, NY 14267**

Continued on Next Page

TERMS & CONDITIONS OF SALE - GENERAL TERMS CONTINUED
U.S. DISTRIBUTOR - RETURN MATERIAL POLICY - EFFECTIVE 8/18/2014

To assist in providing the best service to our valued customers, ECR International has developed the following guidelines to help you in the unlikely event that you will need to return merchandise purchased from us. These guidelines have been developed after carefully reviewing common industry practice. We trust that you find them fair and easy to follow.

Prior Approval Required - All returns for exchange, credit, repair service or warranty claim must be approved by ECR and require an RMA number prior to return of the material. A request must be completed via ECR International's online web portal. Please log on to www.ecrcustomerportal.com (hyperlink below) to complete your request for return. If you do not already have access to the customer web portal please contact ECR Customer Service at 1-800-325-5479 to be set-up.

Eligibility - An RMA Request must be received within 60 days from the date of invoice for returns of New & Unused product in original packaging. A restocking fee of 15% will be charged for all new and unused returns that are approved for return. Special Order Products (items not offered as standard in ECR trade price book) are not eligible for return as new and unused product. Request for Warranty Returns must be made within the period covered by the warranty and must fall under the terms and conditions specified in the warranty.

Repair Service - Request for repair or rework of product damaged by customer is classified as Repair Service. Repair Service is billed at \$75.00 per hour for labor and net price for parts used in repair/rework. ECR's Return Material (RM) department will evaluate the items returned for repair service. The customer will receive an estimate for the dollar amount, determined by ECR's RM department, required to complete the repairs requested. A Purchase Order (PO) from the customer for that amount will be required before any work is performed.

RMA Expiration - Once the RMA number is issued, the product must be returned within 90 days of the RMA date, or the RMA will be canceled. Products approved for return that are received after 90 days from the RMA date will not be accepted.

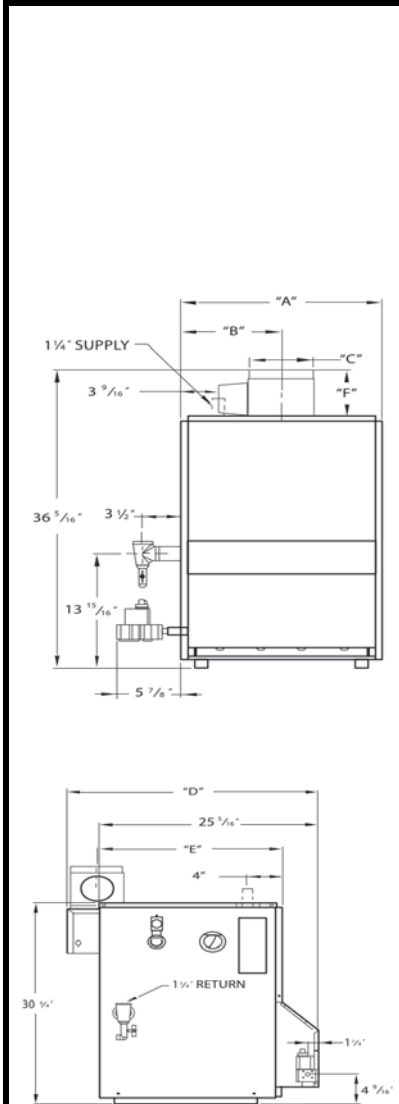
Shipping & Packaging - All returns must have a valid RMA number clearly displayed on the exterior of the package or the package will not be accepted. All returns of new and unused product must be in the original packaging. All returns must be shipped prepaid by the customer unless otherwise directed by ECR as indicated on the RMA Verification. Ship all approved return material to the facility indicated on the approved RMA Request by the date indicated.

Replacement Product - If replacement product is desired it must be indicated on the RMA Request. A PO# is required for the replacement shipment and must be indicated on the RMA Request. All replacement products will be invoiced at the time of shipment. ECR will pay the ground freight for all warranty replacements.

Application of Credit - Credit for returned product will be applied to the customer's account (less restocking fees for New and Unused returns) only after confirmation of receipt by ECR and inspection of the product. Issuance of a credit for a partial return of product does not relieve the customer from the obligation to remit payment for the merchandise not returned in accordance with the payment terms referenced on the customer's invoice(s). Customer will have the option to have any product that is denied for credit returned at their expense.

<http://www.ecrcustomerportal.com>

UH15B Series II
 NATURAL OR PROPANE
 HOT WATER BOILER



General Information (See IOM for complete instructions)

Clearances	Combustible Materials (Required) (1)	
(1) Required distances measured from boiler.	Top	18" (457 mm)
	Front	Alcove*
	Flue Connector	6" (152 mm)
	Rear	8" (203 mm)
	Control Side	9" (229 mm)
	Other Side	3" (76 mm)

*Definition of Alcove is three sided space with no wall in front of boiler. ANSI standard for alcove is 18 inches from front of appliance to leading edge of side walls as shown in IOM.

Connections	Return/Supply Water	Gas In
UH15B045FE through UH15B195FE	1-1/4" NPT	1/2" NPT
UH15B245FE & UH15B295FE		3/4" NPT

Electrical 120 Volts AC, 60 hertz, 1 phase, Less than 12 amps (15 amp circuit recommended)

Water Content UH15B045FE - 2.4 Gallons, UH15B070FE/UH15B096FE - 4.0 Gallons, UH15B120FE/UH15B145FE - 5.6 Gallons, UH15B170FE/UH15B195FE - 7.2 Gallons, UH15B245FE - 8.8 Gallons, UH15B295FE - 10.4 Gallons

Dimensions						
Model	A	B	C	D	E	F
UH15B045FE	11-1/4"	5-5/8"	4"	27-1/8"	20-7/16"	4-15/16"
UH15B070FE	15-1/8"	7"	5"	28-1/8"	20-15/16"	4-15/16"
UH15B096FE	15-1/8"	7"	5"	28-1/8"	20-15/16"	4-15/16"
UH15B120FE	19"	9-1/2"	6"	29-1/8"	21-7/16"	5-7/16"
UH15B145FE	19"	9-1/2"	6"	29-1/8"	21-7/16"	5-7/16"
UH15B170FE	22-7/8"	11-3/16"	7"	30-1/8"	21-15/16"	5-15/16"
UH15B195FE	22-7/8"	11-3/16"	7"	30-1/8"	21-15/16"	5-15/16"
UH15B245FE	26-3/4"	13-6/16"	8"	31-1/8"	22-7/16"	6-15/16"
UH15B295FE	30-5/8"	15-5/16"	9"	32-1/8"	22-15/16"	8-15/16"

UH15B SERIES CONTINUED								
(NATURAL GAS - WITH TACO SYSTEM PUMP)								
BOILER MODEL	ITEM NUMBER	TRADE PRICE	INPUT (MBH)	HTG. CAP. (MBH)	AHRI NET (MBH)	AFUE RATING %	NO. OF BRNS.	SHIP WGT.
UH15B045FE	15B204503110209	\$1,775	45	37	32	82.0%	1	255
UH15B070FE	15B307003110209	\$1,894	70	57	50	82.0%	2	305
UH15B096FE	15B309603110209	\$1,998	96	79	69	82.0%	2	310
UH15B120FE	15B412003110209	\$2,198	120	98	85	82.0%	3	355
UH15B145FE	15B414503110209	\$2,336	145	119	103	82.0%	3	360
UH15B170FE	15B517003110209	\$2,625	170	140	122	82.0%	4	420
UH15B195FE	15B519503110209	\$2,910	195	160	139	82.0%	4	425
UH15B245FE	15B624503110209	\$3,178	245	201	174	82.0%	5	495
UH15B295FE	15B729503110209	\$3,390	295	242	210	82.0%	6	555
(NATURAL GAS - WITH GRUNDFOS SYSTEM PUMP)								
BOILER MODEL	ITEM NUMBER	TRADE PRICE	INPUT (MBH)	HTG. CAP. (MBH)	AHRI NET (MBH)	AFUE RATING %	NO. OF BRNS.	SHIP WGT.
UH15B045FE	15B204503120209	\$1,775	45	37	32	82.0%	1	255
UH15B070FE	15B307003120209	\$1,894	70	57	50	82.0%	2	305
UH15B096FE	15B309603120209	\$1,998	96	79	69	82.0%	2	310
UH15B120FE	15B412003120209	\$2,198	120	98	85	82.0%	3	355
UH15B145FE	15B414503120209	\$2,336	145	119	103	82.0%	3	360
UH15B170FE	15B517003120209	\$2,625	170	140	122	82.0%	4	420
UH15B195FE	15B519503120209	\$2,910	195	160	139	82.0%	4	425
UH15B245FE	15B624503120209	\$3,178	245	201	174	82.0%	5	495
UH15B295FE	15B729503120209	\$3,390	295	242	210	82.0%	6	555
(LP GAS - WITH TACO SYSTEM PUMP)								
BOILER MODEL	ITEM NUMBER	TRADE PRICE	INPUT (MBH)	HTG. CAP. (MBH)	AHRI NET (MBH)	AFUE RATING %	NO. OF BRNS.	SHIP WGT.
UH15B045FE	15B204513110209	\$1,822	45	37	32	82.0%	1	255
UH15B070FE	15B307013110209	\$1,941	70	57	50	82.0%	2	305
UH15B096FE	15B309613110209	\$2,045	96	79	69	82.0%	2	310
UH15B120FE	15B412013110209	\$2,245	120	98	85	82.0%	3	355
UH15B145FE	15B414513110209	\$2,383	145	119	103	82.0%	3	360
UH15B195FE	15B519513110209	\$2,957	195	160	139	82.0%	4	425
UH15B245FE	15B624513110209	\$3,225	245	201	174	82.0%	5	495
UH15B295FE	15B729513110209	\$3,437	295	242	210	82.0%	6	555
(LP GAS - WITH GRUNDFOS SYSTEM PUMP)								
BOILER MODEL	ITEM NUMBER	TRADE PRICE	INPUT (MBH)	HTG. CAP. (MBH)	AHRI NET (MBH)	AFUE RATING %	NO. OF BRNS.	SHIP WGT.
UH15B045FE	15B204513120209	\$1,822	45	37	32	82.0%	1	255
UH15B070FE	15B307013120209	\$1,941	70	57	50	82.0%	2	305
UH15B096FE	15B309613120209	\$2,045	96	79	69	82.0%	2	310
UH15B120FE	15B412013120209	\$2,245	120	98	85	82.0%	3	355
UH15B145FE	15B414513120209	\$2,383	145	119	103	82.0%	3	360
UH15B195FE	15B519513120209	\$2,957	195	160	139	82.0%	4	425
UH15B245FE	15B624513120209	\$3,225	245	201	174	82.0%	5	495
UH15B295FE	15B729513120209	\$3,437	295	242	210	82.0%	6	555

UH15B SERIES CONTINUED		
(USE PARTS MULTIPLIER FOR ALL OF THE FOLLOWING)	PN	TRADE
UH15B045FE NATURAL GAS TO LP GAS CONVERSION KIT	550001279	\$46
UH15B070FE NATURAL GAS TO LP GAS CONVERSION KIT	550001280	\$46
UH15B096FE NATURAL GAS TO LP GAS CONVERSION KIT	550001281	\$46
UH15B120FE NATURAL GAS TO LP GAS CONVERSION KIT	550001282	\$54
UH15B145FE NATURAL GAS TO LP GAS CONVERSION KIT	550001283	\$54
UH15B170FE NATURAL GAS TO LP GAS CONVERSION KIT	550001282	\$54
UH15B195FE NATURAL GAS TO LP GAS CONVERSION KIT	550001285	\$51
UH15B245FE NATURAL GAS TO LP GAS CONVERSION KIT	550001286	\$51
UH15B295FE NATURAL GAS TO LP GAS CONVERSION KIT	550001287	\$60
UH15B045FE LP GAS TO NATURAL GAS CONVERSION KIT	550001270	\$49
UH15B070FE LP GAS TO NATURAL GAS CONVERSION KIT	550001271	\$49
UH15B096FE LP GAS TO NATURAL GAS CONVERSION KIT	550001272	\$49
UH15B120FE LP GAS TO NATURAL GAS CONVERSION KIT	550001273	\$51
UH15B145FE LP GAS TO NATURAL GAS CONVERSION KIT	550001274	\$51
UH15B170FE LP GAS TO NATURAL GAS CONVERSION KIT	550001273	\$51
UH15B195FE LP GAS TO NATURAL GAS CONVERSION KIT	550001276	\$51
UH15B245FE LP GAS TO NATURAL GAS CONVERSION KIT	550001277	\$71
UH15B295FE LP GAS TO NATURAL GAS CONVERSION KIT	550001278	\$58
COMBUSTIBLE FLOOR PLATE FOR ALL CAPACITIES	14614032	\$96

UH15B SERIES STANDARD EQUIPMENT

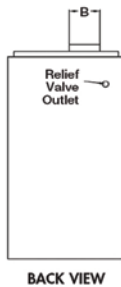
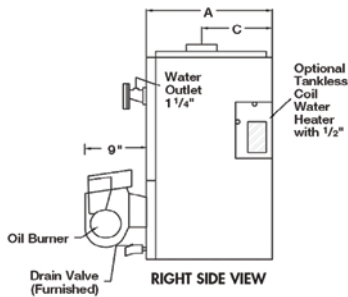
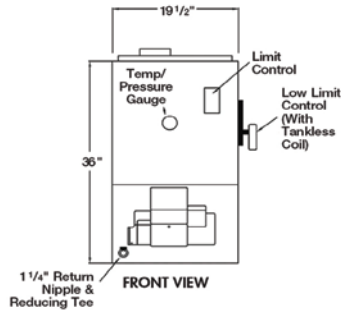
STANDARD EQUIPMENT:

- Boiler Control Module: Honeywell integrated High Limit Control, Vent Damper Control and Intermittent Spark Control housed under a protective cover.
- Heat Exchanger: Cast Iron Sections with Cast Iron Push Nipples.
- Combustion: Main Gas Burners, Combination 24 Volt Gas Control (Includes: Automatic Gas Valve, Gas Pressure Regulator, Intermittent Pilot, Safety Shutoff, Pilot Flow Adjustment, Pilot Filter)
- Safety: Spill Switch, Roll-Out Switch, Automatic Vent Damper.
- Other: Insulated Boiler Jacket, Integral Draft Diverter, Combination Temperature/Pressure Gauge,

UHKW II SERIES

OIL
HOT WATER BOILER
ATMOSPHERIC
(CHIMNEY VENTED)

50 PSI
MAWP



General Information (See IOM for complete instructions)

Clearances		Combustible Materials Required (1)	Servicing (2)	Flue to Combustible Clearance
(2) Service, proper operation clearance recommendation.	Left Side	6" (152 mm)	N/A	
	Right Side	24" (610 mm)	24" (610 mm)	
	Front	24" (610 mm)	N/A	
	Back	6" (152 mm)	N/A	
	Bottom	Non-Combustible	N/A	

Connections Return/Supply Water

All Models 1-1/4" NPT

Electrical 120 Volts AC, 60 hertz, 1 phase, Less than 12 amps (15 amp circuit recommended)

Water Content UH3KW - 9.6 Gallons, UH4W - 11.6 Gallons, UH5KW - 13.7 Gallons

Dimensions

Model	A "Depth"	B "Flue"	C "Back of Boiler to Center Line of Flue"
UH3KW	17-3/4"	6"	9-3/4"
UH4KW	21"	6"	11-3/8"
UH5KW	24-1/4"	6"	13"

UHKW II SERIES LESS COIL CONTINUED										
(BECKETT W/TACO)										
BOILER MODEL	ITEM NUMBER	TRADE PRICE	BURNER FIRE RATE	INPUT (MBH)	HTG. CAP. (MBH)	AHRI NET (MBH)	A.F.U.E. RATING %	CHIM DIA.	SHIP WGT.	
3KW.75	KWB307531110209	\$2,259	0.75	105	92	80	85.2%	8"X8"X15'	470	
4KW1.50	KWB415031110209	\$2,441	1.50	210	179	156	84.0%	8"X8"X15'	545	
5KW1.75	KWB517531110209	\$3,039	1.75	245	210	183	84.3%	8"X8"X15'	630	
(BECKETT W/GRUNDFOS)										
BOILER MODEL	ITEM NUMBER	TRADE PRICE	BURNER FIRE RATE	INPUT (MBH)	HTG. CAP. (MBH)	AHRI NET (MBH)	A.F.U.E. RATING %	CHIM DIA.	SHIP WGT.	
3KW.75	KWB307531120209	\$2,259	0.75	105	92	80	85.2%	8"X8"X15'	470	
4KW1.50	KWB415031120209	\$2,441	1.50	210	179	156	84.0%	8"X8"X15'	545	
5KW1.75	KWB517531120209	\$3,039	1.75	245	210	183	84.3%	8"X8"X15'	630	
KW II SERIES II WITH COIL										
(BECKETT W/TACO)										
BOILER MODEL	ITEM NUMBER	TRADE PRICE	BURNER FIRE RATE	INPUT (MBH)	HTG. CAP. (MBH)	AHRI NET (MBH)	A.F.U.E. RATING %	CHIM DIA.	TANK-LESS G.P.M.	SHIP WGT.
3KW.75	KWB307532110209	\$2,611	0.75	105	92	80	85.2%	8"X8"X15'	3.00	470
4KW1.50	KWB415032110209	\$2,944	1.50	210	179	156	84.0%	8"X8"X15'	3.75	545
5KW1.75	KWB517532110209	\$3,384	1.75	245	210	183	84.3%	8"X8"X15'	4.00	630
(BECKETT W/GRUNDFOS)										
BOILER MODEL	ITEM NUMBER	TRADE PRICE	BURNER FIRE RATE	INPUT (MBH)	HTG. CAP. (MBH)	AHRI NET (MBH)	A.F.U.E. RATING %	CHIM DIA.	TANK-LESS G.P.M.	SHIP WGT.
3KW.75	KWB307532120209	\$2,611	0.75	105	92	80	85.2%	8"X8"X15'	3.00	470
4KW1.50	KWB415032120209	\$2,944	1.50	210	179	156	84.0%	8"X8"X15'	3.75	545
5KW1.75	KWB517532120209	\$3,384	1.75	245	210	183	84.3%	8"X8"X15'	4.00	630
(USE PARTS MULTIPLIER FOR ALL OF THE FOLLOWING)										
						PN	TRADE			
3 SECTION RE-RATE KIT (0.75 TO 0.60 OR 1.00 G.P.H.)						550002646	\$23			
4 SECTION RE-RATE KIT (1.50 TO 0.90 OR 1.25 G.P.H.)						550002647	\$23			
5 SECTION RE-RATE KIT (1.75 TO 1.20 OR 2.00 G.P.H.)						550002648	\$56			
FILL-TROL #110 FOR WATER BOILERS 150 MBH OR LESS						14624002	\$291			
FILL-TROL #111 FOR WATER BOILERS OVER 150 MBH						14624003	\$392			
UHKW II SERES- STANDARD EQUIPMENT										
STANDARD EQUIPMENT:										
<ul style="list-style-type: none"> - Boiler Control Module: Honeywell Combination High Limit Control and Circulator Relay Control with digital temperature display and diagnostics. - Heat Exchanger: Cast Iron Sections with Cast Iron Push Nipples. - Combustion: Completely installed and wired Beckett AFG Series Oil Burner equipped with Nozzle, Primary Control, CAD Cell, PSC Motor, Interrupted Duty Ignition and Clean Cut Pump; Flue Brush; Target Wall (Vacuum Formed Refractory Ceramic Fiber); Dura Blanket Insulation Chamber and Barometric Draft Control 6". - Other: Assembled Boiler with Insulated Jacket, Combination Temperature/Pressure Gauge, Circulator Pump wired with 5' harness for supply or return mounting in the field, 3/4" Boiler Drain Valve, 30 psi ASME Relief Valve, Extra Boiler Tap for Expansion Tank or Air Elimination. 										